

# Annex

## Technical Specifications – February 2025

### **Address:**

823 Seymour Street  
Vancouver B.C.  
V6B 3L4  
<http://vancouvercivictheatres.com/>

Seating Capacity: 146 Main Level  
45 On Gallery

Stage Door: (604) 665-3035 (Orpheum)  
Fax: (604) 665-2149 (Orpheum)  
Venue Bar: (604) 673-8335  
Admin: (604) 665-2193

Stage Door: Same as above  
Main Theatre Audience Entrance: Same as above

**Please note:** the venue is located on the 2<sup>nd</sup> through 4<sup>th</sup> floor. The front entrance is very small, with only stairs and an elevator on the ground floor. Therefore, there normally is no stage door attendant present unless there is a performance. Should you need assistance, please walk less than half a block south to the Orpheum Stage Door.

### **Staff Contacts:**

Paul McManus - Sr. Manager, Production	604-665-3024	<a href="mailto:paul.mcmanus@vancouver.ca">paul.mcmanus@vancouver.ca</a>
Brendan Keith - Technical Director	604-665-3043	<a href="mailto:brendan.keith@vancouver.ca">brendan.keith@vancouver.ca</a>
Levi Pease - Venue Technician	778-968-7382	<a href="mailto:levi.pease@vancouver.ca">levi.pease@vancouver.ca</a>
General Booking Enquiries:		<a href="mailto:vctbooking@vancouver.ca">vctbooking@vancouver.ca</a>

### **Loading Access:**

- Main Location - In the alley between Seymour and Granville Streets:
  1. Truck waits to unload on Robson Street between Seymour and Granville (facing West), East of the Alley (back of Truck is at the Robson/ Seymour corner) on the South Side of the Street (East bound curb lane).
  2. If required, a Traffic Control Vehicle will be in the same East bound curb lane just west of Alley, facing the Truck, blocking oncoming Traffic.
  3. Truck Turns Right (North) across 3 lanes of Robson St. into the Alley beside "5 Guys" Burgers.
  4. Truck then reverses and backs South, across Robson St. and down the alley to the Orpheum Dock on the East side of the alley (Low Clearance especially at the Cab / North. Please lower all suspension to aid with the 13'-9" height clearance of the dock overhang.)
  5. Often dumpsters must be moved to enable Truck to turn into the Dock. Watch out for lamp-posts along the alley.
- Do not attempt to enter the alley from Smithe Street. (Unless you are a 1-ton truck or smaller)
- Loading Bays: One truck level dock with adjustable dock plate which is under the overhang of a residential tower. Dock clearance is 13'-9". There is 170 sqft of temporary storage space on the enclosed dock.
- Loading Doors: One Roll up door, 9'w x 9'h (2.74m x 2.74m)
- Dock Height: 3'-4" (0.99m) high, above street level
- Access to Stage: From loading dock on to Freight Elevator. Then up to level 2, along hallway to backstage
- Freight Elevator: Load capacity 12,000lbs. Located down long hallway from upstage right 7'-11"w x 7'-11"h (2.14m x 2.41m). Door opening and 8'w x 10'h x 19'-4"d (2.44m x 3.05m x 5.90m) inside
- Passenger Freight Elevator: Located in lobby. This allows access to all levels of the venue.

**Note:** Loading Dock and freight elevator is shared with the Orpheum and VSO School of Music

## Parking Information:

- The venue has no on-site parking. Street parking is controlled by the City of Vancouver. Buses normally arrange to park at the metered spaces beside the Orpheum stage door.
- Shore power is available for busses. NO IDLING is permitted
- Bus and Truck parking may be able to be arranged by the Licensee in the lot across the street from Stage Door.
- Trucks cannot remain in loading dock bay once unloaded

**\*\* Street parking is controlled by City of Vancouver. For street parking permit information, please visit the following links:**

[Information](#) about hosting events in Vancouver on public property – ie: streets and sidewalks. City is required to review/process any work requests for on street production parking.

Web form for [inquiries](#) to Film and Special Event office. Note: They deal with activity on COV streets and sidewalks only.



Street Bus Parking With Shore Power Box



# Orpheum / Annex: Bus and Truck Parking / Dock Map



North >>>



Loading Dock Down Lane On The Left

## Traffic Plan:

- The Civic Theatres has a Traffic Control Plan requiring flaggers and possible road closures when it comes to the movement of trucks in and out of the loading dock in the alley. The size of the plan and cost varies depending on the number of trucks and size.

# USE OF HAZARDOUS MATERIALS IN THE VANCOUVER CIVIC THEATRES

Government of Canada legislation requires that the use of "controlled" products in our theatres shall comply with the rules under WHMIS (Workplace Hazardous Materials Information System). Controlled products include:

- (1) Compressed Gas
- (2) Flammable and Combustible Material
- (3) Oxidizing Material
- (4) Poisonous and Infectious Material
- (5) Corrosive Material
- (6) Dangerously Reactive Material

WHMIS regulations require that:

- (a) Anyone using controlled products in the workplace must be informed as to its safe storage, handling, use, and disposal.
- (b) All containers of controlled products must have warning labels attached that meet regulation requirements.
- (c) A MSDS (Material Safety Data Sheet) for any controlled product must be available and be maintained in the immediate work area.

Some substances such as explosives, radioactive materials, and tobacco are covered under separate regulations. The use of propane powered devices and the storage of propane tanks within the theatre premises is not permitted

**Smoking and/or Vaping in our venues is strictly prohibited under our Civic Bylaws. This includes outside the venue within 20 feet (6 meters) of any doorway, window, loading bay, and/or air intake.**

## Flame / Pyro:

Use of any product or device that involves flame shall need to be discussed and approved by the Civic Theatres in advance. The proper approval / permits by the Licensee from the Vancouver Fire & Resuce Services shall also be required.

***Note:** as the venue's fire system is linked to the condo tower, it is highly likely that all requests to use Flame or Pyro will not be approved by the venue.*

## Firearms:

Use of any firearms shall need to be discussed and approved in advance by the Civic Theatres. All proper permits, licenses, storage/handling procedures will be required by the Licensee.

## Haze and Fog:

Haze and Fog are not permitted to be used in the venue as the fire system is linked to the condo tower.

# DELIVERIES IN ADVANCE

Due to limited space, the venue can only accept merch shipments and/or large stage deliveries on a day your event is in the venue (unless special permission has been arranged in advance with the venue). Should deliveries arrive without prior approval, they will likely be rejected/refused.

# GLITTER / CONFETTI / STREAMERS

Glitter is no longer permitted in the venue. When it comes to Confetti and/or Streamers, only paper products may be approved. We can no longer accept Mylar as it is a single use plastic product. Please note: Confetti and/or Streamers require advanced venue approval prior to event. If approved, there will be a cleaning fee charged for their use.

## STAGE SPECIFIC SAFETY REQUIREMENTS

- Steel Toed shoes are required if Car Loading. In any other situation they are recommended.
- Hard Hats are required by anyone who is on deck when Riggers are overhead or if working at the bottom of a lift.
- All Riggers / Flys must wear radio chest harnesses when working overhead. Attaching a radio (other than in the approved harness) is not permitted.
- If rigging / working overhead, all pockets must be empty of any loose items.
- Harnesses and Lifelines need to be used as required by the venue, based on the work. Locations are indicated by visible lifelines and/or anchors.



# Stage Info

## Stage Floor:

- Sprung linoleum floor, with total performing area (with no seats) of 43' wide X 62' deep (Please see detailed notes in stage dimensions)
- The second level of the venue consists of an overhung gallery style walkway around the venue. Seating can be added here for audience to watch the performance. On three sides, this gallery overhang may affect the usable floor space below, due to the height clearance.
- The east wall of the venue is where the retractable seatings stores when not in use.
- Screwing and drilling into the floor is not permitted.

**Note:** This is a "blackbox" style venue located on Level 2 of the building. There is no Proscenium.

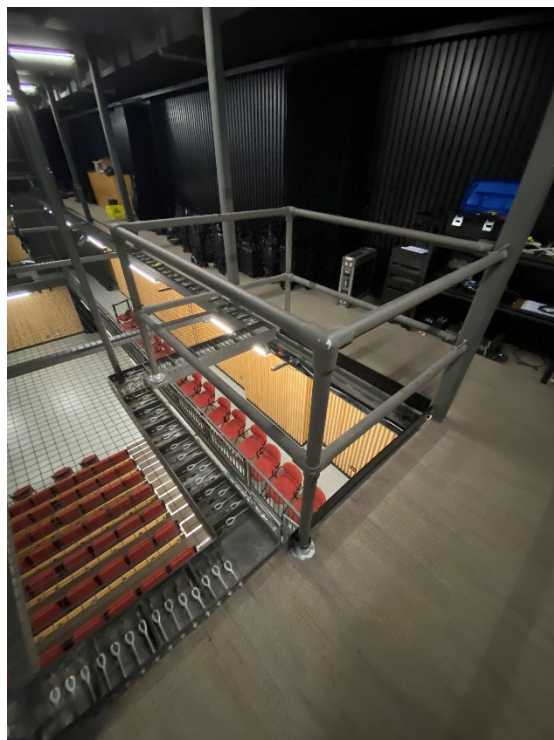
## Stage Dimensions:

- |   |  |
|---|--|
| • Stage Area with no seating:                   | 43'w X 62'd  |
| • Stage Area with retractable seating:          | 43'w X 30'-6"d (13.11m X 8.99m) - Utilizes West side of the room |
| • Second Level Audience Catwalk:                | 4' 8"d   |
| • Stage Floor to Underside of Audience Walkway: | 10'-5" (3.16m) – to underside Unistrut                           |
| • Stage height:                                 | 24' - from stage floor to wire mesh grid                         |
| • Above grid height:                            | 10'-2" (3.10m) - from grid to ceiling                            |

**Note:** With the retractable seating in use, the only entrance to/from backstage is located Upsatge Right (South/West) corner of the room.

## Fly System:

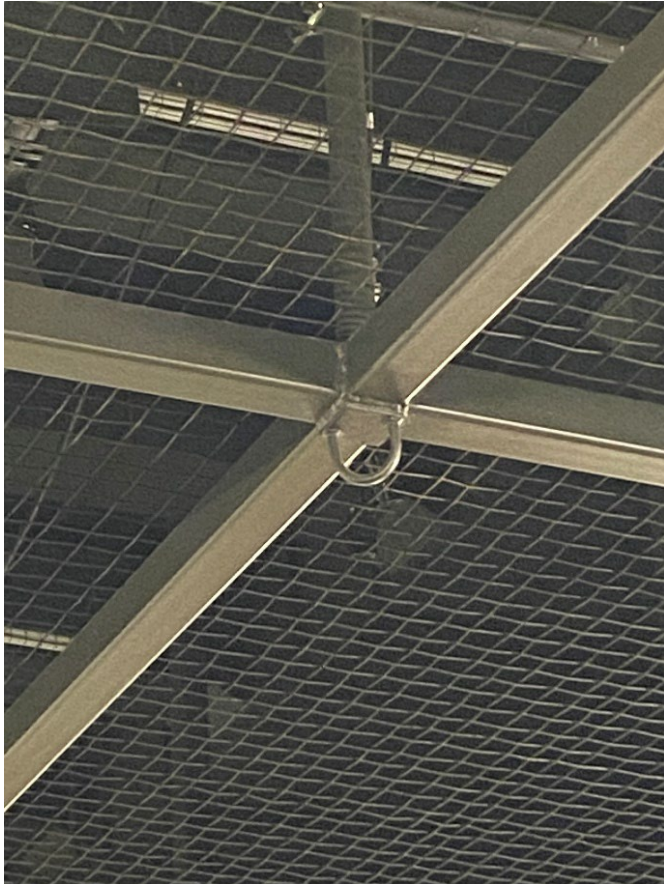
- The venue has no fly system.
- There is a wire mesh grid above the stage that allows the crew to walk out on to reach the lighting. Only chain or aircraft cable will fit between the holes in the wire grid. Scenery cannot fly past it.
- In each corner of the venue there is a (5' x 4') section of the wire mesh grid that has been omitted. This opening is to allow equipment to be hoisted through to Level 4.



## Rigging Points:

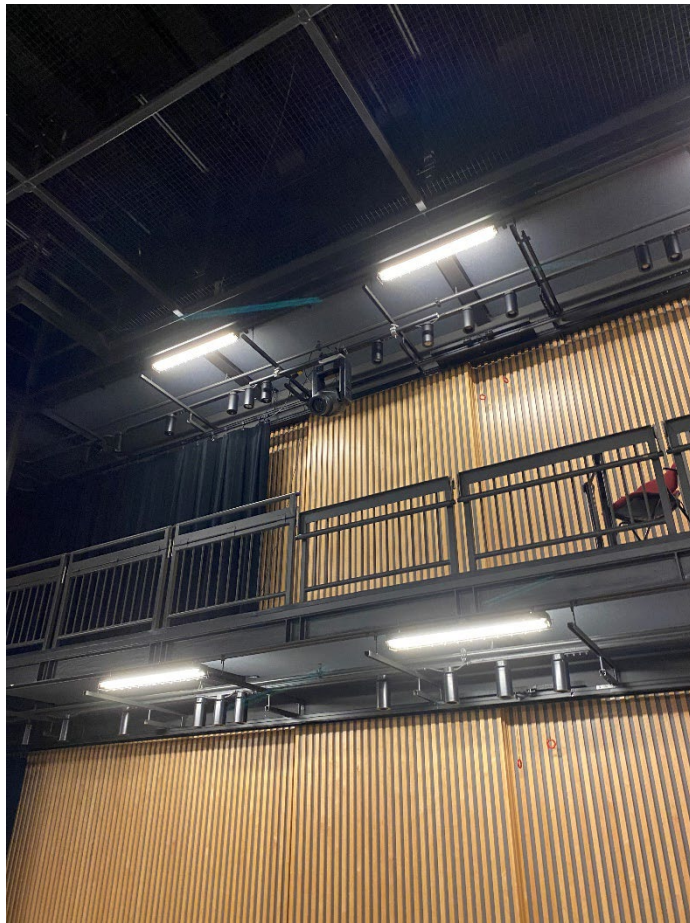
- The wire mesh grid is divided into (9'-6" x 9'-6") sections with the side sections being (9'-6" x 6'-6"), framed by a steel structure. On the underside of the wire mesh grid where each section of the steel structure meets is a half loop rigging point. (These currently have not been rated)
- Above the the wire mesh grid, the roof of the venue has 6x evenly spaced steel I-beams. There are also 1x short steel beam over both of the east open sections of the grid. These can all be rigged using a small size steel basket (for very light loads) or a beam clamp.

**Note:** the venue does not have much rigging. There are 4x 1-ton beam clamps available for rigging.



## Stage Draperies / Wood Walls:

- Level 2 (Main Floor) and Level 3 (2<sup>nd</sup> Floor) of the venue's walls are covered with decorative blond coloured slats of wood that act as sound diffusion. On Level 4 (Technical Floor) the walls also have wood slats, but are all painted black.
- Along the walls on Level 2 and 3 there are 2x sets of curtain tracks that allow curtains to be drawn in front of the wood slats. These tracks also have track switches that allow for the curtains on each track to be switched (front to back/ back to front).
- Normally the first track closest to the wall holds the red velour drapes. The second track in front of the red drape holds the black velour. These drapes are made in sections, so staggering sections is possible.
- Level 4 only has 1x track that allows for black curtains to be pulled in front of the wood panels



## Cabel Access Between Floors:

- Between Levels 2, 3 and 4 around the perimeter of the venue there are access holes that allow for cables to be passed up/down as needed. When not in use, these have threaded caps.



# Stage Equipment

**Note:** supplementary equipment - SUBJECT TO PRIOR RESERVATION as this equipment can be shared with the Orpheum

Risers:

- 4x @ 4' X 8' X 8" high (Code: A8)
- 4x @ 4' X 8' X 16" high (Code: A16)
- 4x @ 4' X 8' X 24" high (Code: (A24)
- 3x @ 4' X 8' X 24" to 36" (Adjustable Staging Concepts Risers)
- 2x @ 4' X 8' X 8" high with angled right side (Code: BR8)
- 2x @ 4' X 8' X 8" high with angled left side (Code: BL8)
- 2x @ 4' X 8' X 16" high with angled right side (Code: BR16)
- 2x @ 4' X 8' X 16" high with angled left side (Code: BL16)
- 2x @ 4' X 8' X 24" high with angled right side (Code: BR24)
- 2x @ 4' X 8' X 24" high with angled left side (Code: BL24)
- 4x @ 2' X 8' X 8" high (Code: G8)
- 1x @ 2' X 8' X 24" high (Code: G24)
- 2x each @ 2' X 8' X 8" high with angled side (Code: HR8 & HL8)
- 2x each @ 2' X 8' X 16" high with angled side (Code: HR16 & HL16)
- 4 x @ 2' X 4' X 8" high (Code: F8)
- 4 x @ 2' X 4' X 16" high (Code: F16)
- 2 x @ 4' X 4' X 8" high (Code: E8)
- 2 x @ 4' X 4' X 16" high (Code: E16)
- 2 x @ 4' X 5' X 8" high with angled left side (Code: DL8)
- 2 x @ 4' X 5' X 8" high with angled right side (Code: DR8)
- 2 x @ 4' X 5' X 16" high with angled left side (Code: DL16)
- 2 x @ 4' X 5' X 16" high with angled right side (Code DR16)

Steps and Skirts and some railings are available

Speakers Lectern:

- 1x Oak Wood 2'6"W x 2'-3"D x 3'9"H
- 1x Plexi 2'-3"W x 1'-9"D x 3'-10"H

Conductor's podium:

- 1x Conductors - 4"h (6' x 4')
- 1x Speakers – 8"h (3' x 4')

Music Stands:

- 26x Manhasset stands, available with LED stand lights

Chairs:

- 105x black, padded Wenger orchestra chairs (new style)
- More chairs are available at the Orpheum, if required. Please check availability

Personnel Lifts:

- 1x Battery powered "Handy Herman" 24D personnel lift (24' platform) – Lives at the Orpheum
- 1x Plug-in powered "GENIE" PLI-30 personnel lift (30' platform) – Lives at the Orpheum

Piano:

- 1x 9' Steinway Grand model D. Serial #36211 from 1959 (Tuning cost is payable by lessee) – This is normally utilized at the Orpheum. Please check availability in advance. The venue does not permit our piano to be used as a "Prepared Piano"

Dance Floor:

- None

Truss:

- 2x 8' sections of 12" Christie Lites - Type A - Box Truss

## Stage Crew

- All rentals include the services of a Venue Tech (Stage Supervisor) for up to 8, straight-time hours each day. Overtime hours will be billed to the Licensee.
- Additional stage crew is supplied through agreement with IATSE Local 118. The total number of stage crew needed to staff an event will be determined by the Theatre's Technical Department, in consultation with the Licensee.
- At all times, stage activity must be supervised by the applicable house technicians.
- Meal breaks must be given every 4 hours, except that once in a day, stage crew may work a 5 hour block before a meal break is required. If stage crew are required to work beyond these times without a meal break, they will be paid a premium rate until such time as they are able to take their break.
- Meal breaks can be either a 1-hour unpaid break or a ½ hour paid break. A 15 minute coffee break is usually taken at the mid-way point of a 4 or 5 hour block.
- The minimum crew call is 4 hours. A break of greater than 1.5 hours between calls will constitute a new "minimum call"

# Facilities

## Off Stage Up Right Common Area:

- Upstage Right (West wall) there is a double set of doors that leads into a light lock. Outside the second set of doors is designated as a common area that also has access to the back hallway, loading dock, storage, and dressing rooms.
- While there is a small table and a few chairs here, this area is not considered secluded as a green room.
- There is a small kitchenette located here with cupboards, sink, mini fridge, and microwave.
- A Closed Circuit TV of the stage is mounted on the wall





## **Storage Room 2<sup>nd</sup> Floor:**

- In the back hall is a storage room mostly used for venue equipment such as tables, chairs, and music stands.
- 15' X 12' (5.57m X 3.66m) – Gives around 180 sqft of temporary storage
- Storage space is limited as this area also acts as venue storage. Please confirm availability in advance.



## **Storage Room 3<sup>rd</sup> Floor:**

- In the back hall beside the dimmer room is a storage room mostly used for venue equipment
- 21' X 16' (6.40m X 4.88m) with a section reduced for the dimmer room – Gives around 300 sqft of temporary storage
- In order to access, you must use the freight elevator to reach Level 3
- Storage space is limited as this area also acts as venue storage. Please confirm availability in advance.



## Dressing Rooms:

- Dressing Room 1
  - Located outside the west (upstage doors). 7'-6" x 21' (2.29m x 6.40m)
  - This rooms consists of makeup mirrors, counter, and clothes rack (approx 5-6 people)
  - There is a bathroom consisting of a toilet, sink and shower.



- Dressing Room 2
  - Located outside the west (upstage doors). 9' x 16' (2.74m x 4.88m)
  - This rooms consists of makeup mirrors, counter and clothes rack (approx 5-6 people)
  - There is a bathroom consisting of a toilet, sink and a mobility walk-in shower.





## Wardrobe Room:

- None

## Storage Area – Level #4:

- Venue storage of technical equipment is usually achieved around the perimeter of Level 4.



## Communication and Internet:

*Note: phone and WIFI information: Production Access only, not for use by general public*

- Telephone lines on request.
- City Business WI-FI coverage backstage, in dressing rooms, performance space, and FOH areas available for production use.
- 6x hardwired “show” internet lines run from the VSO School of Music server room to the patch bay on Level 4. Jumps then can be made to the patch points throughout the venue.

*Note: WIFI Upload / Download speed is normally 80Mbps (6G). Wired internet speed is normally 100 Mbps*



# POWER

## **Temporary Power – Lighting / Video / General:**

### LEVEL 4:

- 1x 400 amps 3 Ø 120/208V 60 cycles - type J Cam-Lock
- 1x 60 amps 3 Ø 125/250V 60 cycles - Pin and Sleeve C-5 Blue Connector
- 2x 30 amps 1 Ø 125/250V 60 cycles - 14-30R Connector
- 7x 15 amps 1 Ø 120V 60 cycles - standard 5-15 connector

### LEVEL 3:

- 4x 15 amps 1 Ø 120V 60 cycles - standard 5-15 connector

### LEVEL 2:

- 1x 100 amps 3 Ø 120/208V 60 cycles - type J Cam-Lock – (located in backstage storage room)
- 1x 50 amps 1 Ø 125/250V 60 cycles - 14-50R Connector
- 1x 30 amps 1 Ø 125/250V 60 cycles - 14-30R Connector
- 4x 15 amps 1 Ø 120V 60 cycles – standard 5-15 connector

## **Temporary Power – Audio (Isolated Ground – This power is in addition to the above)**

### LEVEL 4:

- 2x 30 amps 1 Ø 125/250V 60 cycles - L14-30R Connector on Technical Ground
- 6x 15 amps 1 Ø 120V 60 cycles - standard 5-15 connector on Technical Ground – (2x located in open sections of grid)

### LEVEL 3:

- 10x 15 amps 1 Ø 120V 60 cycles - standard 5-15 connector on Technical Ground

### LEVEL 2:

- 1x 30 amps 1 Ø 125/250V 60 cycles - 14-30R Connector on Technical Ground
- 8x 15 amps 1 Ø 120V 60 cycles - standard 5-15 connector on Technical Ground

# LIGHTING

**Note:** A detailed Lighting Plot, Paperwork and Magic Sheets are available upon request in Pdf. We can also provide CAD files in VectorWorks (.vwx) and paperwork in Lightwright (.lw6). Please always check the actual Lighting Plot download file on the website for the most up-to-date info

## Lighting Consoles:

ETC ION with:

- No tracking back-up
- One 2 x 20 sub-master wing
- No designer remote video station available
- 2x 19" LCD monitors
- Wifi for (RFR) remote for app on a phone
- 1024 channels / 1024 outputs

ETC Paradigm:

- Separate, house-light/work-light control is possible via controller if requested. Otherwise, control is normally run through the lighting console. Control of houselights is normally not given to Road Shows. Furthermore, when audience are moving around (pre-show/intermission/post-show), houselights must be at the venue's set 100%.

## Dimmers/Circuits:

2.4 Kw – twist-lock (L5-20)

- 118x ETC Sensor Dimmers

## Control:

DMX – None, unless connected directly to back of console

ETC Gateway / Cat5e/6 Network:

- 1x cat5e line on Level 2 to connect console to house dimmers
- Currently no gateways in venue
- Entire system can be connected to a console via sACN

## Permanently Installed Positions:

PIPES ABOVE GRID ON LEVEL 4:

- There are evenly spaced pipes lighting pipes (10' apart) running north/south. Each pipe is around 24' long.

## Equipment Totals:

- 14x - 26° ETC Source 4 @ 575 watts: 6 ½" x 6 ½" (16 cm x 16 cm) colour frames
- 8x - 36° ETC Source 4 @ 575 watts: 6 ½" x 6 ½" (16 cm x 16 cm) colour frames
- 4x - 50° ETC Source 4 @ 575 watts: 6 ½" x 6 ½" (16 cm x 16 cm) colour frames
- 24x - ETC Source 4 Fresnel 7" with barndoors @ 575 watts: 7 ½" x 7 ½" (19.05 cm x 19.05 cm) colour frames
- 12x - ETC Source 4 ParNel @ 575 watts: 7 ½" x 7 ½" (19.05 cm x 19.05 cm) colour frames
- 18x - ETC Source 4 Par @ 575 watts: 7 ½" x 7 ½" (19.05 cm x 19.05 cm) colour frame
  - A selection of lenses are available
- 6x Elation Opti Tri Par LED wash
- 7x - VL 1000 MOVING LIGHTS: Fixture details available on request. Fixture total includes 3 spares
- A few black 19°, 26°, 36°, 50° barrels (possibly available from the Orpheum)

## Miscellaneous Gear:

- Template Holders
  - 8x "B" size for Source 4
- 6x Iris Kits for ETC Source 4

## Stand Lights:

- A request to borrow from the Orpheum would need to be made in advance

## Notes:

- All stage circuit connectors are 20-amp twist-lock (L5-20)
- The venue stocks a few different barrels for the S4 Lekos. See paperwork for inventory
- A sufficient amount of single and multi-cable for use with theatre equipment stock is available. Adding equipment may require additional cable. We can adapt some L5-20 twist-lock or 5-15 U-Ground.
- A reasonable amount of 5-pin DMX. Adding equipment may require additional cable.
- While we stock a reasonable inventory of commonly used Rosco and Lee gel colours, we do not promise to have any particular colours that may be needed for your production
- We have a small selection of Gobos in A & B sizes
- Please always check the latest Lightwright paperwork for the most up-to-date equipment totals and info

## Houselights:

- The main audience houselights are the Source 4 Fresnels that are hung on Level 4.
- There are Par 32 bulbs around the perimeter on Levels 2 and 3. These are in the center of the catwalk and were designed to light the drapes / audience catwalk portions of the venue. There are both white and blue lights. However, there are double the number of white lights.

## Lighting Booth:

- Due to the nature of the venue, there is no specific room designated as the "booth." Normally, the technical tables are located on Level 4 at the East end of the room.
- When required, it is possible to move the lighting control equipment down to either Level 2 or 3.





# AUDIO

## House Sound System:

- Main Left/Right system is comprised of 2x Meyer UPQ-1P loudspeakers
- 2x Meyer 650-R2 Subs
- The main Left/Right system normally entirely lives at the West end of Level 4
- Patching facilities exist along the walls on all 3 levels of the venue

## Hearing Assist:

- Listen Tech (LCS-121-01) Wi-Fi/RF Advanced System. This system combines Wi-Fi and RF technologies to give compliant audio coverage PLUS expanded coverage to everyone with a smartphone or tablet.
- 12x Listen Tech Receivers (72 MHz) with universal ear speaker plus neck loop.
- 1x Shure MX202B/C hanging mic from above dedicated to hearing assist

## Portable & Monitor Speakers:

- 2x Meyer UM-100P stage monitors
- 2x Meyer UM-1P stage monitors
- 2x Mackie SRM 150 active speakers

## FOH House Mixing Console:

- 1x Avid S3L digital mixing console with standard plug-in package
- 1x Allen and Heath QU-16 digital mixing console with AB168 Stage Box

## Networking:

- The System is connected running an AVB network for the Avid consoles and a control network for system control and Dante audio distortion
- There is only one console and no Dante

## Patching

- The hub of the system is in a portable rack on Level 4 where there is 1x Avid Stage 16 box (plus 2 spares)
- There are patchable XLR tie-lines around the walls on Levels 2, 3 and 4. The main patch panel is located at the east end of Level 4

## CD Player:

- None

## Signal Processing:

- The system is controlled using 1x Meyer Galileo 408 loudspeaker processor

## Paging & Program:

- BSS London Blue Signal Processor with Crestron controller on Level 4 for program sound. There are selection controls in the lobby, backstage and in each dressing room that allows one to select the program sound feed from either the Annex, Pyatt Hall, Orpheum or just an A440 tone. The lobby control has the ability to select Dry Line (not A440 tone) if the house audio console has been connected.
- Paging is currently not possible.

## Intercom:

- 1x CS-702 master station (2 channels) on Level 4
- 4x Clear-Com 501 single channel belt packs with CC-95 headsets
- 4x Radio Active Designs wireless packs

## Microphones / DI's:

- AKG C451 4
- Shure SM58 4
- Shure SM57 4
- Shure VP88 1
- Earthworks -FMR500HD 1
- DI boxes:
  - Radial PC DI 1
  - Radial JDI 6 (passive)
  - Radial JDI 2 (active)
  - Cable Factory PC DI 1
  - Radial ProD2 Stereo DI 2

## Stage Wireless Mics:

- 1x Shure Axient AD4Q Quad Receivers (4 channels total (470 - 616MHz))
- 1x RF Venue Diversity Fin Antennas (470 - 698MHz)
- 4x Shure AD2/SM58 Handheld Transmitters (470 - 616MHz)
- 4x Shure AD1 Bodypack Transmitters (470 - 616MHz)
- 1x Countryman B6 Lav
- 4x Oscar Sound Technologies HM701 Headset mics with TA4F connectors
- 4x Oscar Sound Technologies TL40 Lav mics with TA4F connectors
- 8x Shure SB900A Rechargeable batteries

## FOH Wireless Mics:

- 1x Shure ULXD4 Single Channel receiver (470 - 534 MHz)
- 1x Shure Handheld ULXD2 / SM58 (470-534MHz) transmitters

## Cables & Stands:

- 6x Tall tripod mic stands with booms (K+M, ATLAS)
- 4x Short tripod boom stands
- 4x Tall round base straight stands

*Note: assortment of stands, cables, splitter boxes, pre mixers, adapters, etc. availability subject to prior reservation.*

## Pro Tools / Audio Recording Rig:

- Apple Mac-Mini with AVB connection to Avid Pro Tools from S3L console up to 64 tracks of independent recording.
- 2 Track recording via USB onboard S3L console

*Note: recording media not provided*

## Audio Booth:

- Due to the nature of the venue, there is no specific room designated as the “booth.” Normally, the technical tables are located on Level 4 at the East end of the room.
- When required, it is possible to move the audio control equipment down to either Level 2 or 3.



# VIDEO

**Note:** There may be added costs if using the video system. Please inquire for further information or if you have specific questions.

## Cameras:

- 3 x Panasonic HN 130 PTZ cameras
- 1 x Panasonic AW-UE150K camera

## Video Control Room:

Video control room is in the back hall storage room beside the dimmer room, on the 3<sup>rd</sup> floor

- 1 x Panasonic AV-HS450 Multi-Format HD/SD 1 M/E Live Switcher with 2 DVI input cards (Switcher runs at 1080i59.94)
- 1 x AJA Ki Pro Go H.264 Recorder
- 1 x Blackmagic Smartscope
- SDI broadcast monitors
- Livestream system, with AJA U-Tap video capture device, Focusrite Scarlett 2i2 audio interface, Lenovo Legion laptop computer, running Windows 10 and OBS
- 1 x Panasonic AW-RP120 camera controller
- 1 x Blackmagic Design Smart Videohub HD 20x20 Matrix

## Tech Booth:

Tech booth is located on Level 4 with Sound and Lighting.

- 1 x Folsom Image Pro 2 video switcher
- 1 x Macbook Pro Laptop for PPT, Keynote, and Full Qlab 4.7/5.3 Licence



## Projectors:

- 1x Christie Digital HD6K HD projector, 3-chip DLP, (6,500 lumens)
- 1x Christie Digital HD10K HD Projector, 3 chip DLP (10,000 lumens)



## **Projection Screen:**

- 1x Stumpfl 13'-6" x 24' fast fold projection screen (Front Projection surface only)
- 1x Draper Premier motorized 220" diagonal (108" x 192" viewing area) (Front Projection only)

## **Miscellaneous Gear:**

- Various video cross convertors HDMI, SDI- Have Two Blackmagic HDMI to SDI converters
- 1x 25' Five conductor video snake
- Dsan PerfectCue remote slide cuing system
- 1 x Decimator 12G-Cross Converter

## **Lobby TV Video:**

- It is currently not possible to send custom images/video to these screens

# Ki Pro GO Series

## Approved Media

### Media and Configuration Information for USB Drives

---

#### Introduction

---

This document details approved media types and media formatting recommendations for the Ki Pro GO Series of digital recorders including the Ki Pro GO and Ki Pro GO2.

#### Media Formatting

---

For the best results, AJA Video Systems recommends formatting all media to ExFAT prior to use with the Ki Pro GO Series, due to file size constraints with other formats.

In some cases, drives ship formatted as NTFS. Those drives **MUST** be reformatted to ExFAT prior to use, and this is indicated with Notes in this document.

#### Multi-Channel/Redundant Recordings

---

AJA recommends the SSD drives listed in this document be used for multi-channel and/or redundant recording with the Ki Pro GO Series.

### Supported USB Thumb Drives (Single Channel Recordings)

---

#### Transcend JetFlash 780

---

- Transcend JetFlash 64GB = TS64GJF780
- Transcend JetFlash 128GB = TS128GJF780
- Transcend JetFlash 256GB = TS256GJF780

#### Transcend JetFlash 910

---

- Transcend JetFlash 128GB = TS128GJF910
- Transcend JetFlash 256GB = TS256GJF910

#### Transcend JetFlash 920

---

- Transcend JetFlash 920 128GB = TS128JF920
- Transcend JetFlash 920 256GB = TS256JF920
- Transcend JetFlash 920 512GB = TS512JF920

## Transcend JetFlash 930C

---

- Transcend JetFlash 930C 128GB = TS128GJF930C
- Transcend JetFlash 930C 256GB = TS256GJF930C

## Corsair Flash Voyager GTX

---

*NOTE: These drives MUST be formatted as ExFAT before use.*

- Corsair Flash Voyager GTX128GB = CMFVYGTX3C-128GB
- Corsair Flash Voyager GTX256GB = CMFVYGTX3C-256GB
- Corsair Flash Voyager GTX512GB = CMFVYGTX3C-512GB
- Corsair Flash Voyager GTX1TB = CMFVYGTX3C-1TB

## OWC Envoy Pro Mini

---

- OWC Envoy Pro Mini 500GB: OWCENVPMCA05

OWC drives ship pre-formatted in Apple's APFS format. To be able to be used with a Ki Pro GO or Windows PC, they must be re-formatted as ExFAT volumes. This is accomplished on a Mac via Apple's Disk Utility or through the use of the free "OWC Drive Guide" plug-in available for Windows from:

[start.owc.com/windowsformat](http://start.owc.com/windowsformat)

## Supported SSD Drives (Multi Channel/Redundant Recordings)

---

### AJA PAK Dock Pro

---

- External dock for use with AJA PAK media.
- All PAK media from rev2 and above are supported, ExFAT format required.

### Samsung Portable SSD T5

---

- Samsung T5 500GB: MU-PA500B
- Samsung T5 1TB: MU-PA1T0B
- Samsung T5 2TB: MU-PA2T0B

### Samsung Portable SSD T7

---

The last letter in the part numbers only indicates the color of the unit.

- Samsung T7 500GB: MU-PC500(T,R or H)
- Samsung T7 1TB: MU-PC1T0(T,R or H)
- Samsung T7 2TB: MU-PC2T0(T,R or H)

### Samsung Portable SSD T7 Shield

---

The last letter in the part numbers only indicates the color of the unit.

- Samsung T7 Shield 1TB: MU-PE1T0 (KR or S)
- Samsung T7 Shield 2TB: MU-PE2T0 (KR or S)

## Samsung Portable SSD T7 Touch

---

**NOTE:** For these units, security **MUST** be set up before they can be used by the Ki Pro GO Series

The last letter in the part numbers only indicates the color of the unit.

- Samsung T7 Touch 500GB: MU-PC500(K or S)
- Samsung T7 Touch 1TB: MU-PC1T0(K or S)
- Samsung T7 Touch 2TB: MU-PC2T0(K or S)

## G-Tech SSD

---

**NOTE:** These drives **MUST** be formatted as ExFAT before use.

Description	Model Number	SKU	UPC
G-DRIVE mobile SSD 500GB	GDRRUCWWA5001SDB	0G06052	705487206142
G-DRIVE mobile SSD 1TB	GDRRUCWWA10001SDB	0G06053	705487206159
G-DRIVE mobile SSD 2TB	GDRRUCWWA20001SDB	0G06054	705487206166

## Contacting AJA Support or Sales

---

Please have all pertinent information at hand prior to contacting AJA support or sales.

Support Telephone: +1.530.271.3190

Support Website: <https://www.aja.com/support/contact>

Support Email: [support@aja.com](mailto:support@aja.com)

Sales Email: [sales@aja.com](mailto:sales@aja.com)

Shipping Address: AJA Video Systems  
180 Litton Drive  
Grass Valley, CA 95945, USA