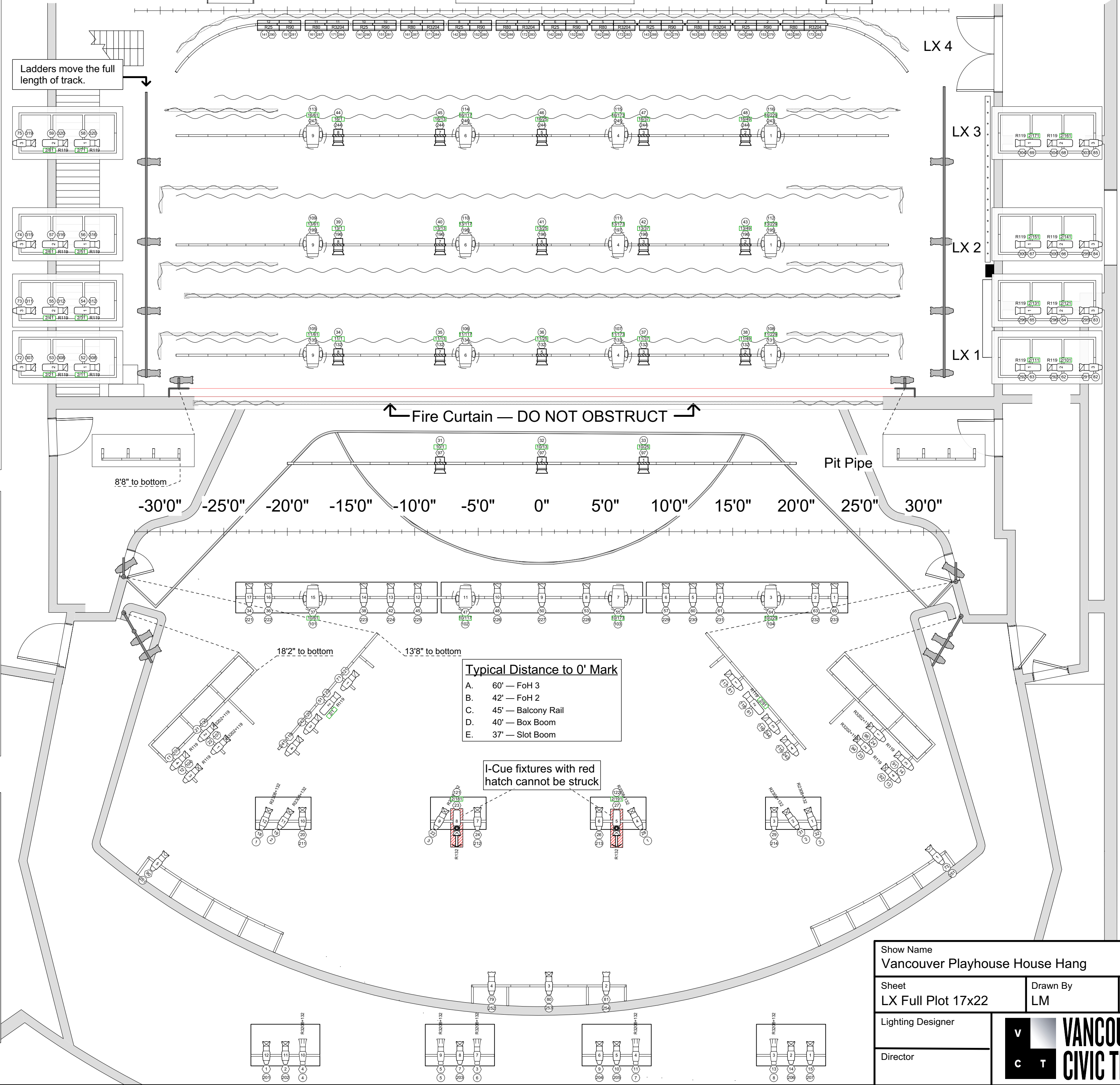


-30'0" -25'0" -20'0" -15'0" -10'0" -5'0" 0" 5'0" 10'0" 15'0" 20'0" 25'0" 30'0"

- Black Backdrop LX 4
- Cyclorama Border
- Black Scrim
- Legs
- Border
- LX 3
- Legs
- Border
- Midstage Traveler
- LX 2
- Legs
- Border
- Portable Screen
- Black Traveler
- Projector Screen
- Legs
- Border
- LX 1
- Pit LX

Accessory		
I-Cue	3.5 lbs	2 / 6
Light		
ETC Source4 10deg	15 lbs	0 / 1
ETC Source4 14deg	19.3 lbs	5 / 5
ETC Source4 19deg	14 lbs	22 / 32
ETC Source4 26deg	14 lbs	31 / 48
ETC Source4 36deg	14 lbs	2 / 67
ETC Source4 50deg	14 lbs	2 / 22
ETC Source4 LED 19deg	14 lbs	2 / 0
ETC Source4 LED 26deg	14 lbs	8 / 6
ETC Source4 LED 36deg	14 lbs	10 / 14
ETC Desire Fresnel	23.7Lbs	18 / 18
Strand 6" Fresnelite	10.5 lbs	0 / 40
Strand Iris 2 Horiz	34 lbs	0 / 12
Moving Light		
Robe T2	81.4	16 / 16

- General Notes**
- A. House plot is to be restored at the end of venue rental.
 - B. Front, top and LED side focus is guaranteed, all else must be focused per the show's specifications.
 - C. Data distribution is network only, with sACN preferred but Art-Net acceptable.
 - D. Typical house trim is 23'
 - E. Arbor capacity is 700lb, with house electrics weighing in at 600lb in house configuration



Typical Distance to 0' Mark

A.	60' — FoH 3
B.	42' — FoH 2
C.	45' — Balcony Rail
D.	40' — Box Boom
E.	37' — Slot Boom

Show Name Vancouver Playhouse House Hang		
Sheet LX Full Plot 17x22	Drawn By LM	Date 03/14/2025
Lighting Designer		
Director		