

Vancouver Playhouse

Technical Specifications – April 2025

Address:

Vancouver Civic Theatres
649 Cambie St.
Vancouver B.C.
V6B 2P1
<http://vancouvercivictheatres.com/>

Seating Capacity: 668+ 5 Wheelchair

Stage Door: (604) 665-3038
Fax: (604) 665-3001

Stage Door / Loading Dock: 601 Cambie Street
Main Theatre Audience Entrance: 600 Hamilton St. (Corner of Hamilton & Dunsmuir Street)

Staff Contacts:

| | | |
|---|--------------|--|
| Paul McManus - Sr. Manager, Production | 604-665-3024 | paul.mcmanus@vancouver.ca |
| Brendan Keith - Technical Director | 604-665-3043 | brendan.keith@vancouver.ca |
| Heather Turnbull - Head Stage Carpenter | 604-665-3041 | heather.turnbull@vancouver.ca |
| General Booking Enquiries: | | vctbooking@vancouver.ca |

Loading Access:

- Loading Bay: One bay at right angle for 40' (12.19m) tractor trailers (if trailer is dropped).
- Loading Doors: One Roll up door, 20' wide X 13' high (6.01m x 3.96m)
- Dock Height: 3'-5" (1.07m) high, above street level
- Access to Stage: Via two large 7' wide x 12' high (1.83m x 3.66m) doors, sliding open at center of upstage wall from the loading dock.
- Freight elevator: None. With special arrangements, smaller items may be moved via the elevator in the Queen Elizabeth Theatre (QET) over to the Playhouse Rehearsal Hall
- Stacking Motor: None
- Alternate Dock: If the QET is not in use, it may be possible to use this venue's one angled bay which is able to take full tractor trailers. Note: you would still be limited to standard doorways between the two stages. Special arrangements would need to be made and approved in advance.

Parking Information:

On site parking: Refer to next page for diagrams and photos.

- We have space on the pad for Either: Two busses, One bus and One truck, or Two trucks. (Please confirm with venue beforehand). Note: We have special authorization from Parking Enforcement for the section of parking that encroaches the sidewalk (see location of bus in photo). Underheight standard vehicles can never park in this section. Equally, if using this unique sidewalk space for a bus or truck, the sections marked "authorized parking" becomes restricted to only a bus or truck & must be used first. No standard vehicles are permitted in any of these spaces when the sidewalk parking is utilized.
- Priority for the parking pad is given to the QET. Please check availability in advance.
- Shore power and water is available for busses. NO IDLING is permitted
- **Trucks cannot remain in loading dock bay once unloaded**

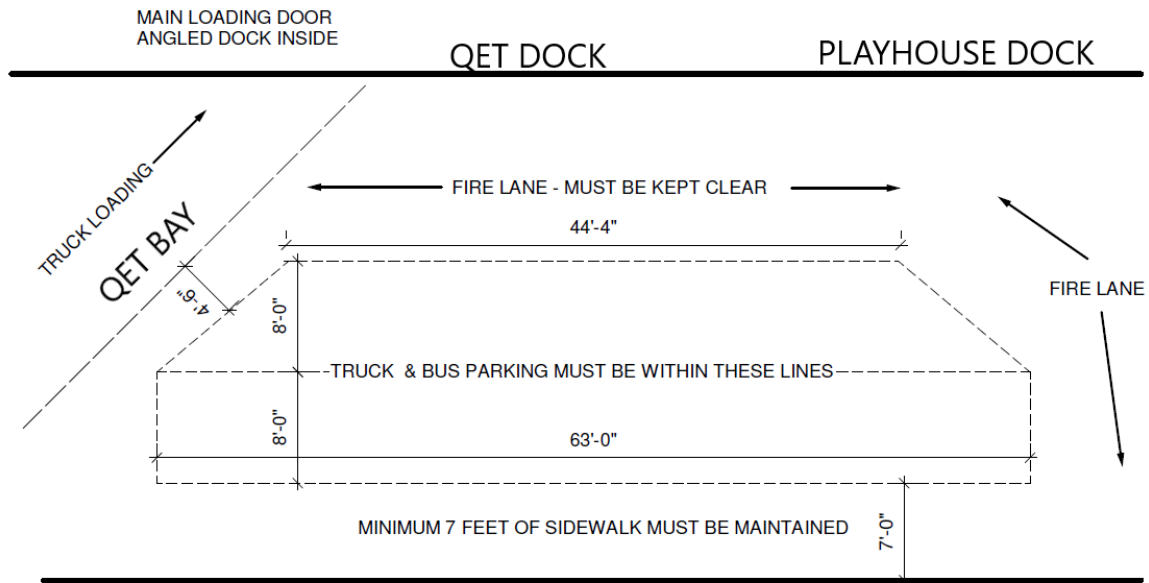
**** Street parking is controlled by City of Vancouver. For street parking permit information, please visit the following links:**

Note: when the pad is full or not available, buses sometimes arrange for a permit for the street parking on Dunsmuir St. between Hamilton and Cambie Street. This is usually the 200 block.

Information about hosting events in Vancouver on public property – ie: streets and sidewalks. City is required to review/process any work requests for on street production parking.

Web form for [inquiries](#) to Film and Special Event office. Note: They deal with activity on COV streets and sidewalks only.

VANCOUVER PLAYHOUSE / QET: BUS AND TRUCK PARKING



CAMBIE STREET



Traffic Plan:

- The Civic Theatres has a Traffic Control Plan requiring flaggers and possible road closures when it comes to the movement of trucks in and out of the loading docks. The size of the plan and cost varies depending on the number of trucks & day.

USE OF HAZARDOUS MATERIALS IN THE VANCOUVER CIVIC THEATRES

Government of Canada legislation requires that the use of "controlled" products in our theatres shall comply with the rules under WHMIS (Workplace Hazardous Materials Information System). Controlled products include:

- (1) Compressed Gas
- (2) Flammable and Combustible Material
- (3) Oxidizing Material
- (4) Poisonous and Infectious Material
- (5) Corrosive Material
- (6) Dangerously Reactive Material

WHMIS regulations require that:

- (a) Anyone using controlled products in the workplace must be informed as to its safe storage, handling, use, and disposal.
- (b) All containers of controlled products must have warning labels attached that meet regulation requirements.
- (c) A MSDS (Material Safety Data Sheet) for any controlled product must be available and be maintained in the immediate work area.

Some substances such as explosives, radioactive materials, and tobacco are covered under separate regulations. The use of propane powered devices and the storage of propane tanks within the theatre premises is not permitted

Smoking and/or Vaping in our venues is strictly prohibited under our Civic Bylaws. This includes outside the venue within 20 feet (6 meters) of any doorway, window, loading bay, and/or air intake.

Flame / Pyro:

Use of any product or device that involves flame shall need to be discussed and approved by the Civic Theatres in advance. The proper approval / permits by the Licensee from the Vancouver Fire & Rescue Services shall also be required.

Firearms:

Use of any firearms shall need to be discussed and approved in advance by the Civic Theatres. All proper permits, licenses, storage/handling procedures will be required by the Licensee.

Haze and Fog:

Haze and Fog are permitted to be used onstage. However, the fire system must be set to bypass particulate sensors. Therefore, please check with the venue before energizing any of this type of FX equipment.

DELIVERIES IN ADVANCE

Due to limited space, the venue can only accept merch shipments and/or large stage deliveries on a day your event is in the venue (unless special permission has been arranged in advance with the venue). Should deliveries arrive without prior approval, they will likely be rejected/refused.

GLITTER / CONFETTI / STREAMERS

Glitter is no longer permitted in the venue. When it comes to Confetti and/or Streamers, only paper products may be approved. We can no longer accept Mylar as it is a single use plastic product. Please note: Confetti and/or Streamers require advanced venue approval prior to event. If approved, there will be a cleaning fee charged for their use.

STAGE SPECIFIC SAFETY REQUIREMENTS

- Steel Toed shoes are required if Car Loading. In any other situation they are recommended.
- Hard Hats are required by anyone who is on deck when Riggers are overhead or if working at the bottom of a lift.
- All Riggers / Flys must wear radio chest harnesses when working overhead. Attaching a radio (other than in the approved harness) is not permitted.
- If rigging / working overhead, all pockets must be empty of any loose items.
- Harnesses and Lifelines need to be used as required by the venue, based on the work. Locations are indicated by visible lifelines and/or anchors.

STAGE INFO

Stage Floor:

- Edge grain fir with black painted Masonite over top 73' wide X 44' deep (22.25m X 13.41m)
- 6x removable trap sections exist center stage, just upstage of the proscenium (This is an involved process)
- Orchestra pit, which is controlled as a single hydraulic lift
- Screwing and drilling into the floor is permitted, subject to approval. There may be a charge to repair holes in the floor.

Stage Dimensions:

- Proscenium opening (fixed): 45'-9"w x 18'-7"h (13.94m x 5.67m) – see Draperies re: Valance
- Apron line to rear wall: 32'-6" (9.91m)
- Apron line to orchestra pit: 1'-6" (0.46m)
- Apron line to front of apron (raised pit): 10'-3" (3.12m)
- Apron width at apron line: 32' (9.75m)
- Center Stage to SL wall: 35'-8" (10.87m)
- Center Stage to SR wall: 38' (11.58m)
- Free height SR wing space: 45' (13.72m)
- Free height SL wing space: 45' (13.72m)
- Height from stage floor to Underside Grid: 45' (13.72m)
- Height from stage floor to Underside of Load Rail: 37'-9" (10.9m)
- Stage height: 30" (.76m)
- Distance from apron line to lighting booth: 60' (18.3m)
- Distance from apron line to balcony rail: 45' (13.7m)
- Distance from apron line to Spot/Projection booth: 72' (21.95m)
- Cable run from stage to FOH mix position: 130' (39.6m) along wall

Note: clearance for fire curtain must be maintained at all times

Note: the proscenium is not square to the stage. Stage Right is 3.5" further Down Stage compared to Stage Left

Fly System:

- Maximum flying height: 42'-6" (12.95m)
- 43x single purchase line sets, (T-Bars are on 6" centers) plus 2x arbors for side stage lighting ladders and 1x arbor for dedicated pit lighting electric
- Lighting ladder tracks run up and down stage 5'-6" to 26'. They are located off stage 31' (9.45m) SL and SR from center. They are normally trimmed at 9' and can fly out to a max of 26' from the bottom pipe.
- Pipe batten length:
 - Lineset 1 thru 42: 56' (17.07m), 1 7/8" (4.76cm) O.D.
 - Lineset 43 is a curved pipe
- Pipe capacity: 700 pounds (317.5kg)
- Total amount of counterweights above house hang: 9,548 pounds (324 pcs @ 28 lbs and 34 pcs @ 14 lbs)
- Free Pipes: - 20 (Another 21 can be cleared)
- Fly gallery operating position: Stage level located SR. If using flies, scenery cannot be pushed right up to the rail.
- German masking both stage left and right to complete "black box" trimmed at 23'.

Note: pipes must be restored at end of call. Certain pipes such as electrics and travelers take extended time, and/or additional crew to alter and restore. The pit electric and projection screen on line set 7 are permanent and do not move.)

FOH Rigging Points

- None

Stage Draperies:

- Main Curtain: Black Velour mounted within Proscenium Arch, 18'-10" high x 45'-9" wide (5.74m X 13.95m) – Operates as traveller only. 100% box pleats.
- Valance: Black 1' attached to proscenium. Reduces clearance to 17'-8" high.
- Fire Curtain: Directly behind proscenium (Does not Move) – Clearance 19'5" (5.92m)
- Velour Masking:
 - 4x Pairs Black Legs; 22' high x 12' wide (6.71m x 3.66m) non-pleated with bottom chain pocket (equipped with removable return arms).
 - 1x Pair Black Legs; 24' high x 12' wide (7.32m x 3.66m) non-pleated (house trim is 20' off center)
 - 5x Black Borders; 8' high x 56' wide (2.44m x 17.07m) non-pleated with bottom pipe pocket.
 - 2x Black Backdrops; 24' high x 32' wide (7.32m x 9.75m) non-pleated with bottom pipe pocket.
- Scrim: 2x black sharkstooth scrim, 24' high X 60' wide (7.32m X 18.29m)
- Black Travellers: 2x full stage, two-piece mounted on tracks; 20' high x 56' wide (6.1m x 17.07m).
- Cyclorama: 1x Off-white PVC front/rear projection with bottom pipe pocket 24' high x 56' wide (7.32m x 17.07m).

| LINESSET | Dis fr/pros | Description | Bricks | LINESSET | Dis fr/pros | Description | Bricks |
|----------|-------------|--|--------|----------|-------------|------------------------------------|--------|
| 0 | minus 2'-6" | PIT ELECTRIC - TRIM @ 21'-6" | 11 | 26 | 19'-2" | LEGS #3 - WITH RTN ARM (40' OPEN) | 4 |
| | 0"-0" | PIT LINE | X | 27 | 19'-8" | | |
| X | 1'-0" | MAIN TRAVELLER - DOES NOT FLY | X | 28 | 20'-2" | | |
| | 2'-9"/3'-9" | FIRE CURTAIN - DO NOT OBSTRUCT | X | 29 | 20'-8" | | |
| 1 | 4'-2" | | | 30 | 21'-2" | | |
| 2 | 5'-0" | | | 31 | 22'-0" | | |
| 3 | 6'-2" | HOUSE ELECTRIC #1 - TRIM @ 23' | 23 | 32 | 22'-9" | | |
| 4 | 6'-8" | | | 33 | 23'-3" | HOUSE ELECTRIC #3 - TRIM @ 23' | 23 |
| 5 | 7'-2" | BORDER #1 - TRIM @ 19'-0" | 4 | 34 | 24'-0" | | |
| 6 | 7'-8" | LEGS #1 - WITH RETURN ARM (40' OPEN) | 4 | 35 | 24'-9" | BORDER #4 - TRIM @ 21'-4" BOT PIPE | 3 |
| 7 | 8'-2" | PROJECTOR SCREEN - NON MOVEABLE | 12.5 | 36 | 25'-3" | LEGS #4 - (40' OPENING) | 3 |
| 8 | 8'-8" | | | 37 | 25'-9" | BLACK SCRIM | 2 |
| 9 | 9'-6" | | | SL | X | S.L. SIDE LIGHTING LADDERS | 20 |
| 10 | 10'-2" | | | SR | X | S.R. SIDE LIGHTING LADDERS | 20 |
| 11 | 10'-8" | BLACK TRAVELLER "OLEO" Trim out is 22' | 25 | 38 | 26'-3" | BORDER #5 - TRIM @ 18' | 3 |
| 12 | 11'-2" | PORTABLE SCREEN - PRIMARY POSITON | 4 | 39 | 27'-0" | CYC W/ADJUSTABLE LEGS | 13 |
| 13 | 11'-8" | | | 40 | 28'-3" | | |
| 14 | 12'-2" | | | 41 | 28'-9" | | |
| 15 | 12'-8" | BORDER #2 - TRIM @ 20'-10" | 3 | 42 | 32'-0" | CYC ELECTRIC - CURVED PIPE | 17 |
| 16 | 13'-2" | LEGS #2 - WITH RETURN ARM (40' OPEN) | 2.5 | 43 | 32'-8" | BLACK BACKDROP (2 PANELS) | 7.5 |
| 17 | 13'-8" | PANASONIC PROJECTOR | 7 | | | | |
| 18 | 14'-2" | | | | | | |
| 19 | 14'-8" | HOUSE ELECTRIC #2 - TRIM @ 23' | 22 | | | | |
| 20 | 15'-6" | | | | | | |
| 21 | 16'-2" | | | | | | |
| 22 | 16'-8" | MID TRAVELLER - Trim out is 22' | 17 | | | | |
| 23 | 17'-2" | PORTABLE SCREEN - SECOND POSITON | | | | | |
| 24 | 17'-8" | | | | | | |
| 25 | 18'-6" | BORDER #3 - TRIM @ 19'-6" | 3 | | | | |

Number of bricks indicated is bricks above pipe weight. Pipe weight is indicated by top brick painted yellow.

Full Bricks = 28 lbs, half bricks = 14 lbs

Arbour Capacity of Each Pipe: = 700 lbs (317.5kg) or 25 bricks

1'-0" Valance on proscenium - Actual clearance is 17'-8"

Lineset 1 thru 42 - Pipe Length: - 56' (17.07m); 17/8" (4.76cm) O.D

Lineset 43 - Curved pipe

Projection Screen does not move but can be tripped up.

Cyclorama and Black Backdrop are 24' long - 2' taller than the house out trim

Legs on Cyc are tailed down as they are only 22' long.

When bagging the Cyc - add 2 brix for the bag.

Oleo - fabric only = 12 Bricks; Track = 13 bricks

Mid Traveller - fabric only = 6 Bricks; Track = 11 bricks

Projector is 4 Bricks, Mount and Cable are 3 bricks

Portable Projection Screen - Viewable area 11'3" x 20' - Weight = 4 bricks with masking

5x Borders - 8' tall, 56' long

4x 22' x 12' Legs

Legs on lineset 16 are 24' x 12' lightweight legs - 2.5 bricks

STAGE EQUIPMENT

Note: Supplementary equipment - SUBJECT TO PRIOR RESERVATION as this equipment is shared between two theatres

Risers:

- 4x @ 4' X 8' X 8" high (Code: A8)
- 4x @ 4' X 8' X 16" high (Code: A16)
- 4x @ 4' X 8' X 24" high (Code: A24)
- 2x @ 4' X 7'-2" X 8" high with angled right side to 8' (Code: BR8)
- 2x @ 4' X 7'-2" X 8" high with angled left side to 8' (Code: BL8)
- 2x @ 4' X 7'-2" X 16" high with angled right side to 8' (Code: BR16)
- 2x @ 4' X 7'-2" X 16" high with angled left side to 8' (Code: BL16)
- 2x @ 4' X 7'-2" X 24" high with angled right side to 8' (Code: BR24)
- 2x @ 4' X 7'-2" X 24" high with angled left side to 8' (Code: BL24)
- 1x @ 4' X 6' X 8" high with angled right side (Code: CR8)
- 1x @ 4' X 6' X 8" high with angled left side (Code: CL8)
- 1x @ 4' X 6' X 16" high with angled right side (Code: CR16)
- 1x @ 4' X 6' X 16" high with angled left side (Code: CL16)
- 5x @ 2' X 8' X 8" high (Code: G8)
- 3x @ 2' X 8' X 24" high (Code: G24)
- 3x each @ 2' X 7'-7" X 8" high with angled side to 8' (Code: HR8 & HL8)
- 2x each @ 2' X 7'-7" X 24" high with angled side to 8' (Code: HR24 & HL24)

We also have 1x @ 4'x4'x8" (E8), 1x @ 3'x4'x16" (F16), 1x @ 4'x4'-10"x8" angled (DR8 & DL8)

Steps and Skirts are available. All risers decks are a dark brown.

Speakers Lectern:

- 1 plexi @ 48" X 20" X 27"
- 1 wood @ 27" X 44" X 24" (second unit being built)

All can be equipped with reading lamp and microphone mounts



Conductor's podium: 2 @ 40" X 50" X 9"

Music Stands: 12 x stored in Torm SR (100x Manhasset model, available with LED stand lights from the QET)

| | |
|------------------|---|
| Chairs: | 12x black (new style), padded orchestra chairs. 78x at the QET 72x black (old style), padded orchestra chairs 82x burgundy with chrome, padded chairs (Stored in bunker) 138x black with chrome, padded chairs (Stored in Playhouse Elevator Lobby) |
| Personnel Lifts: | 1x Battery powered "Handy Herman" personnel lift (24' platform) – Playhouse Specific Lift |
| Piano: | 1x Steinway 9' Grand model D (serial #36211 from 1959). <u>The venue does not permit our piano to be used as a "Prepared Piano"</u> (Tuning cost is payable by lessee) 1x WX1S Yamaha Upright. (Tuning cost is payable by lessee) (Lives in the Recital Room) |
| Dance Floor: | 6x Harlequin Reversible Pro (Black & White) – 41' X 6' 8" 6x Harlequin Reversible Pro (Black & Grey) – 41' X 6' 8" There is a special piece to cover the DS apron (Black & White) specifically for the Playhouse 2x Harlequin Reversible Pro (Black & White) – 30' X 6' 8" to run Upstage/Downstage as run-offs 2x spare roles of Harlequin Reversible Pro (Black & White) – Length TBD |

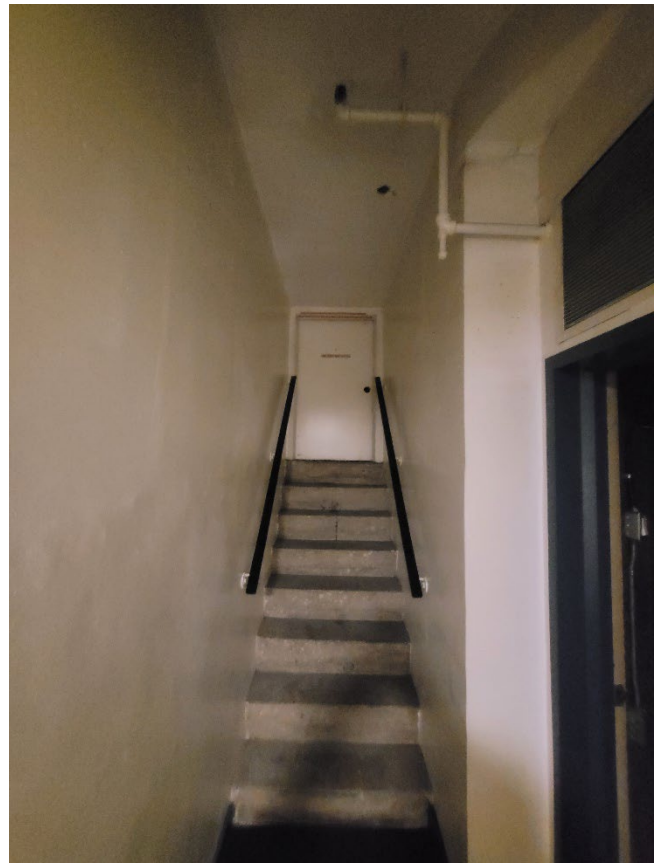
Note: lighting equipment is stored in the Stage Left Proscenium. Tables, Music Stands, power plus audio cable is stored in the Stage Right Proscenium. There is also extra lighting storage on the second level on both sides of the Proscenium.

ORCHESTRA PIT / SEMI-CIRCULAR THRUST STAGE

- The pit is part of the stage, so no seats need to be removed to lower/utilize the pit for an orchestra. However, subject to prior approval it may be possible to lower the pit to auditorium level and accommodate 37 temporary audience seats.
 - Radius: 16' (4.88m)
 - Width (down stage to upstage): 10'-3" (3.12m)
 - Depth (adjustable hydraulically): 12' (3.66m) maximum below stage floor
- As a very rough estimate, the pit with piano can hold around 12 musicians. Without a piano you can hold around 14 to a max of 20 musicians
- When the pit is lowered all the way down there are doors on either side of the pit that open for piano storage and Recital Room access.
- To utilize as an orchestra pit, the lift is stopped midway. One would access the pit from the Basement, up the stairs (see photo) and through the small door 4'-10" (1.47m) high x 2'-7" (0.79m) wide (from Stage Left or Right). Once through the small door, there is a 3'-6" (1.07m) wide corridor with a low ceiling 5' (1.52m) that makes up part of the orchestra pit when the lift safety wall is rolled back out of the way. There will be a small step up from this corridor on to the actual pit lift section.



Storage Level



Stairs / Entrance to Orchestra Pit Level

PORTABLE SOUND SHELL WALLS

- 4x vertical units (140" x 90" x 16") can be wheeled out from the dock and placed/angled onstage as needed.
- 5th unit is horizontal (90" x 140" x 16") to utilize with portable projection screen.
- Made out of unknown wood



STAGE CREW

- All rentals include the services of a Head Carpenter (Stage supervisor) and House Electrician (console operator) for up to 8, straight-time hours each. Theatre Rental Grant Licensees will also have Head Sound included for up to 8, straight time hours. Overtime hours will be billed to the Licensee.
- Additional stage crew is supplied through agreement with [IATSE Local 118](#). The total number of stage crew needed to staff an event will be determined by the Theatre's Technical Department, in consultation with the Licensee.
- At all times, stage activity must be supervised by the applicable house technicians. Productions requiring access to the wardrobe facilities will require a house wardrobe person.
- Meal breaks must be given every 4 hours, except that once in a day, stage crew may work a 5 hour block before a meal break is required. If stage crew are required to work beyond these times without a meal break, they will be paid a premium rate until such time as they are able to take their break.
- Meal breaks can be either a 1-hour unpaid break or a ½ hour paid break. A 15 minute coffee break is usually taken at the mid-way point of a 4 or 5 hour block.
- The minimum crew call is 4 hours. A break of greater than 1.5 hours between calls will constitute a new "minimum call"

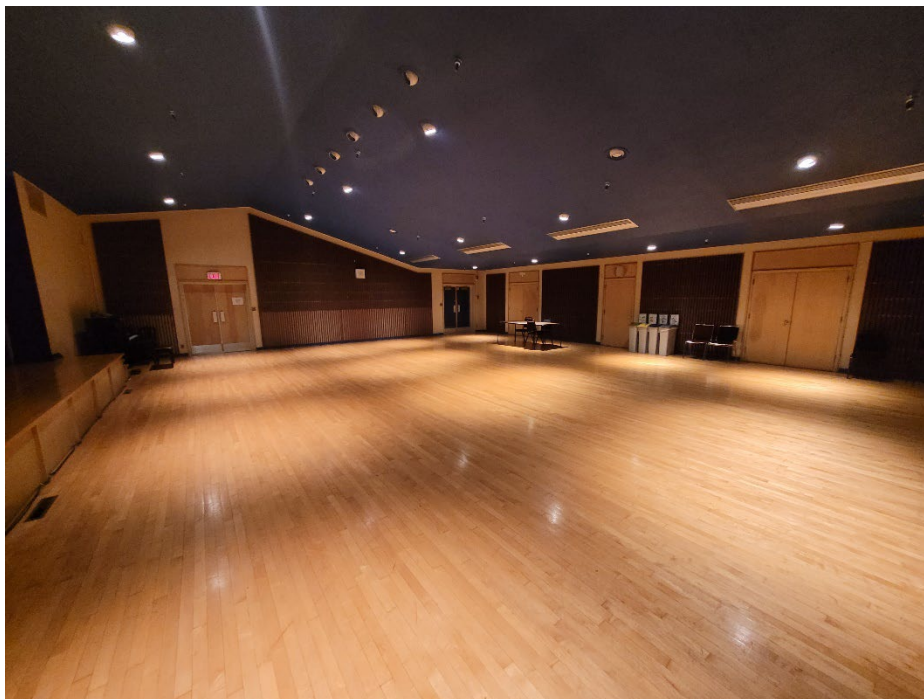
Note: The Playhouse does not have a dedicated crew room. Most crew will wait in the loading dock, (stage right side) where the Head Carpenter's desk is located. There is a small table, chairs and lockers here, plus there is a small kitchen with sink, microwave, and fridge on the (stage left side) of the dock

FACILITIES

Recital Room:

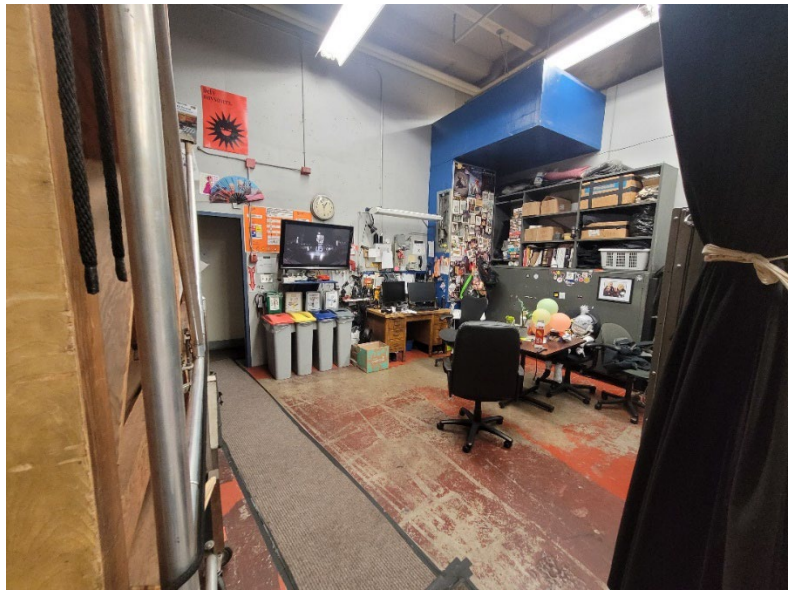
- 42'-8" X 37'-9" (13.00m X 11.51m) No pillars. Height of ceiling is (11'-9" at stage, 13'-9" at peak, and 8'-10" at back)
- Has a small stage 8' deep at center X 17' wide (2.44m X 5.18m) with the small pit storage areas either side of stage
- Has easy access to the backstage green room, dressing rooms, and to lobby
- Room can function as a rehearsal room with the Yamaha Upright piano located in corner
- Enough Dance Floor to cover both the stage and Recital Room simultaneously.
- Maple floor (not sprung)
- Located one floor below stage

Note: availability of this room is subject to prior reservation



Loading Dock:

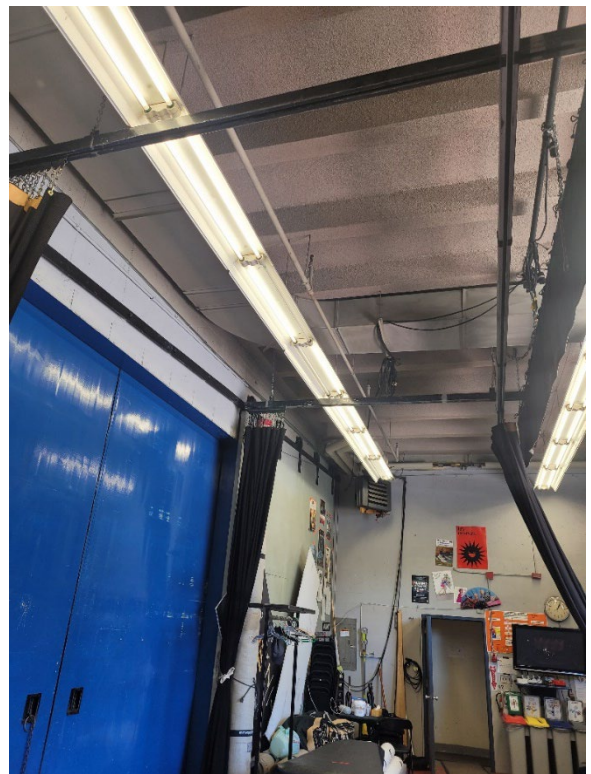
- Located right behind the upstage wall of the stage
- The Stage Right portion of the dock stores the portable sound shell along with equipment/tools storage cupboards, crew lockers, a small table and chairs for the crew. The Head Carpenter's desk is also located in the corner of this section.
- The Stage Left portion of the dock is mostly used for larger sound/video/lighting equipment storage. There is also a small kitchenette with microwave, sink, and fridge.
- On the ceiling of the dock there are traveller tracks which creates a quick change booth 10' deep X 14' wide. Black drap attached to the the tracks can be drawn to hide the rest of the storage areas.



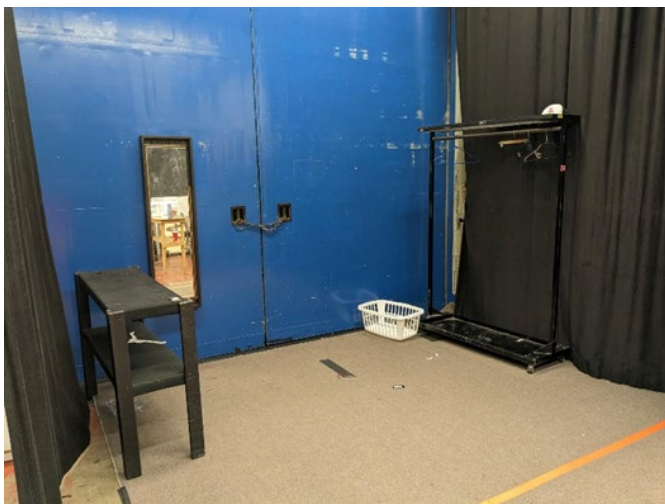
Carp Desk



Kitchentte



Traveller Track



Quick Change



Quick Change Drape

Dressing Rooms:

- 4x Solo Dressing Rooms
- 2x Chorus Dressing Rooms (21-person capacity)

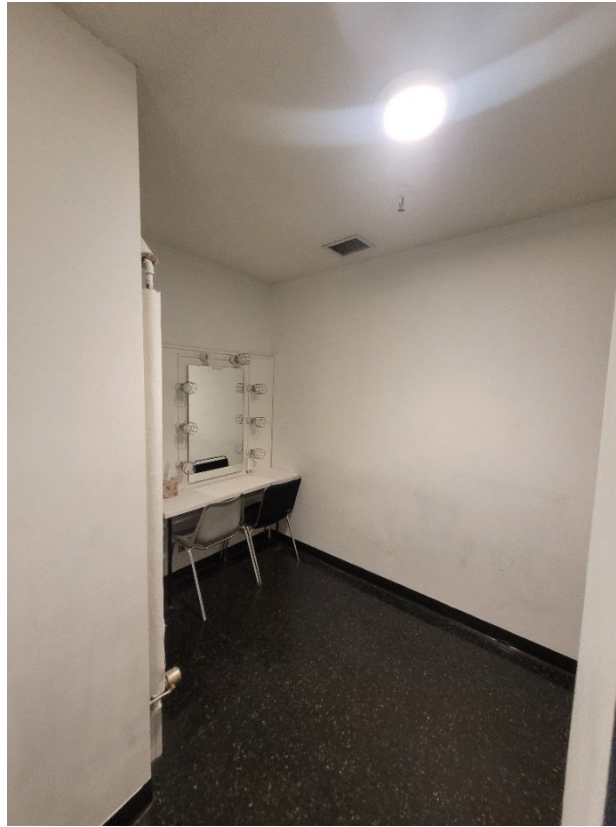
- Solo Dressing Room #1
 - Located one level below the stage on the Stage Left side.
 - This room consists of a clothing rack with shelf plus makeup mirror / counter
 - Shares bathroom (includes shower) with Solo Dressing Room #2



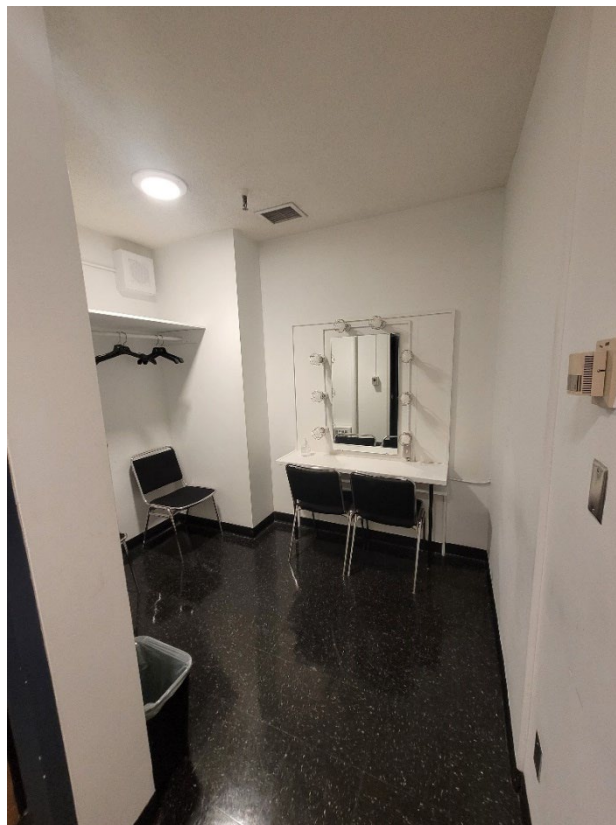
- Solo Dressing Room #2
 - Located one level below the stage on the Stage Left side.
 - This room consists of a clothing rack with shelf plus makeup mirror / counter
 - Shares bathroom (includes shower) with Solo Dressing Room #1



- Solo Dressing Room #3
 - Located one level below the stage on the Stage Left side.
 - This room consists of a clothing rack with shelf plus makeup mirror / counter
 - Shares bathroom (includes shower) with Solo Dressing Room #4



- Solo Dressing Room #4
 - Located one level below the stage on the Stage Left side.
 - This room consists of a clothing rack with shelf plus makeup mirror / counter
 - Shares bathroom (includes shower) with Solo Dressing Room #3



- Chorus Dressing Room #1

- Located one level below the stage on the Stage Left side.
- This room consists of a clothing bars, plus makeup mirrors and counter
- Large multi person bathroom with showers attached to room
- 21 person capacity



- Chorus Dressing Room #2

- Located one level below the stage on the Stage Right side.
- This room consists of a clothing bars, plus makeup mirrors and counter
- Large multi person bathroom with showers attached to room
- 21 person capacity



Green Room:

- 30' X 21' (9.14m X 6.40m) – Located one level below stage on the Stage Right side.
- Room has a small kitchenette with cupboards, fridge, sink, and microwave
- There are tables, large lounge style chairs, and coffee tables
- This rooms ajoin the Rectial Room and is readily accessable from backstage dressing rooms and the FOH lobby

Note: *availabilty of this room is subject to prior reservation*



Wardrobe Room / Dressing Room:

- Irons, ironing boards, steamers, sewing machine, clothing racks, laundry sink, 2x washers and 2x dryers
- Located one level below stage. Can be entered from either the Stage Right or Left hallways
- This room has a curtain divider to restrict use of the wardrobe side of the room, while allowing the other end of the room to be utilized as added dressing room space. The curtain can be drawn out of the way to allow the entire space to be utilized by wardrobe.

NOTE: use of wardrobe facilities and equipment will require House Wardrobe staff



Wigs and Makeup Room:

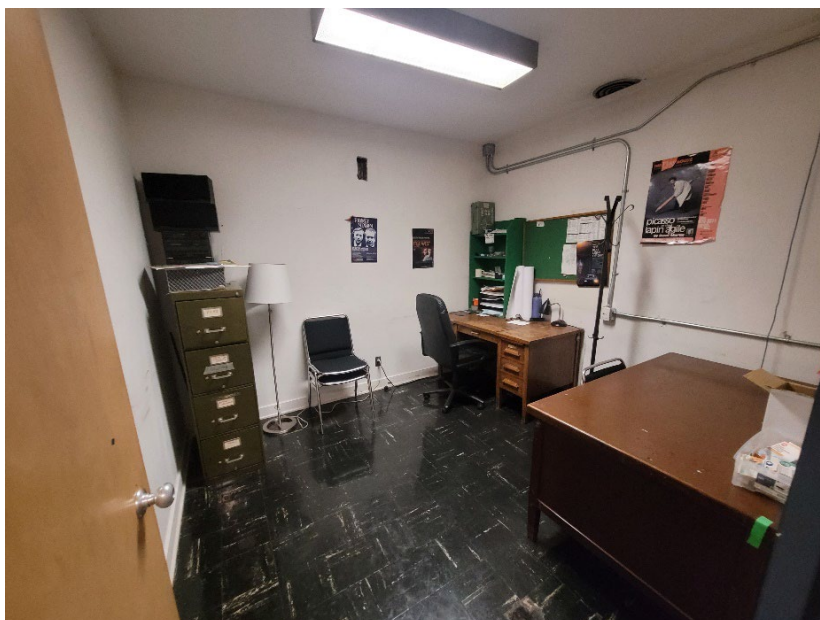
- Located one level below stage on the Stage Right side (beside wardrobe)
- 2x stations with mirrors

NOTE: use of the Wig/Makeup facilities and equipment will require House Wig/Makeup staff



Guest Production Office:

- Located one level below the stage, on the Stage Right side.
- Has 2x desks and chairs. Could be used as a dressing room if needed.



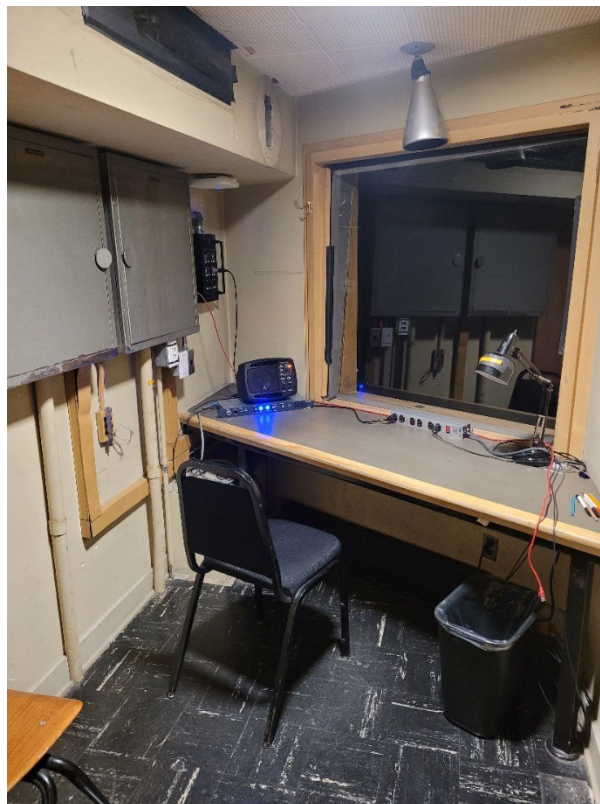
Quick Change Bathroom:

- Located Stage Left in the hall between the Loading Dock and the Stage
- While mainly a bathroom, there is also a makeup mirror with lights plus a small counter



Stage Manager Booth:

- This enclosed room is located at the back of the balcony on the Hosue Left side.
- There is program sound and the Clear-Com base station located here.
- You access this room through a door in the Lobby House Left on Level 2.
- The rooms has a window on the right side that allows you to see into the Radio Room.



Hearing Assist Room:

- This enclosed room is located at the back of the balcony on the Hosue Left side. This room is right beside Stage Manager Booth. This room can be used as needed.
- There is program sound
- You access this room through a door in the Lobby House Left on Level 2.
- The rooms has a window on the left side that allows you to see into the Stage Manager Booth.



Communication and Internet:

Note: Phone and WIFI information: Production Access only, not for use by general public

Network and Telephone Ports

| | <u>LAN port ID</u> | <u>Network</u> |
|-------------------|--------------------|----------------|
| Stage Right | Show-1 | Show |
| Back Stage | Show-2 | Show |
| Production Office | Show-3 | Show |
| Recital Hall | Show-4 | Show |
| Mixing Area | Show-5 | Show |
| Sound Booth | Show-6 | Show |
| Projector Room | Show-7 | Show |

Show Network

| | LAN |
|---------------|-----------------|
| IP addressing | 10.128.0.0/9 |
| Gateway | 10.128.0.1 |
| DHCP | Addressing only |
| Bandwidth | 100 Mbps |

Notes:

- These ports give you a connection to our Public Internet connection.
- This network is NAT'd through a Firewall to Public IP addresses.
- The firewall does allow all traffic outbound (no restrictions).
- The Public Internet connection Meg fibre connection shared with the CoV-Public WiFi connection.

Linux Users – If their laptop won't connect to the internet have them go into properties menu under Authentication, Click on Protected EAP (PEAP) and also check the box for **NO CA certificate required**

Note: WIFI Upload / Download speed is normally 40Mbps (6G). Wired internet speed is normally 100 Mbps

POWER

Temporary Power – Lighting / Video / General:

STAGE:

DOWNSTAGE LEFT

- 1x 30 amps 3 Ø 120/208V 60 cycles - L21-30 Twist Connector
- 1x 30 amps 1 Ø 125/250V 60 cycles - L14-30 Twist Connector

DOWNSTAGE RIGHT

- 1x 30 amps 3 Ø 120/208V 60 cycles - L21-30 Twist Connector
- 1x 30 amps 1 Ø 125/250V 60 cycles - L14-30 Twist Connector

UPSTAGE LEFT

- 1x 400 amps 3 Ø 120/208V 60 cycles - Type J CAM-Lok
- 1x 30 amps 3 Ø 120/208V 60 cycles - L21-30 Twist Connector
- 1x 30 amps 1 Ø 125/250V 60 cycles - L14-30 Twist Connector
- 1x 15 amps 1 Ø 250V 60 cycles - L6-15 Twist Connector

UPSTAGE RIGHT

- 1x 200 amps 3 Ø 120/208V 60 cycles - Type J CAM-Lok
- 1x 30 amps 3 Ø 120/208V 60 cycles - L21-30 Twist Connector
- 1x 30 amps 1 Ø 125/250V 60 cycles - L14-30 Twist Connector

LOADING DOCK

- 1x 50 amps 1 Ø 125/250V 60 cycles - 14-50R Range Plug (used for supplementary heater)
- 1x 30 amps 1 Ø 125/250V 60 cycles - L14-30 Twist Connector (used for shared compressor and kitchenette appliances)

SPOT BOOTH

- 1x 50 amps 3 Ø 250V 60 cycles – 15-50 Connector
- 1x 30 amps 3 Ø 120/208V 60 cycles - L21-30 Twist Connector
- 1x 30 amps 1 Ø 125/250V 60 cycles - L14-30 Twist Connector
- 2x 30 amps 1 Ø 250V 60 cycles – L6-30 Twist Connector 1x 15 amps 1 Ø 250V 60 cycles - L6-15 Twist Connector

RECITAL HALL

- 2x 30 amps 3 Ø 120/208V 60 cycles - L21-30 Twist Connector

LOBBY:

BY ACCESSIBLE WASHROOM

- 1x 30 amps 3 Ø 120/208V 60 cycles - L21-30 Twist Connector

AT TOP OF UPPER LOBBY STAIRS

- 1x 30 amps 1 Ø 120/208V 60 cycles – L14-30 Twist Connector

Temporary Power – Audio (Isolated Ground – This power is in addition to the above)

AUDIO BOOTH

- 1x Panel to only power House Audio with a sub panel by the amp racks

LIGHTING

Note: A detailed Lighting Plot, Paperwork and Magic Sheets are available upon request in Pdf. We can also provide CAD files in VectorWorks (.vwx) and paperwork in Lightwright (.lw6). Please always check the actual Lighting Plot download file on the website for the most up-to-date info

Lighting Consoles:

ETC EOS ION with:

- Full tracking back-up (Secondary EOS ION) – This unit normally lives onstage as a focus remote
- One 2 x 20 sub-master wing
- Full function tablet remote (RFR) or use of the app on a phone
- 6144 channels / 6144 outputs

ETC Paradigm:

Separate, house-light/work-light control. Control of houselights is not given to Road Shows. Furthermore, when audience are moving around (pre-show/intermission/post-show), houselights must be at the venue's set 100%

Dimmers/Circuits:

- 382x AVAB DDII Stage and House Light Dimmers – 2.4Kw twist-lock (L5-20)
- 24x ETC SR12+ House Light Dimmers, D20 modules

Control:

ETC Gateway / Cat5e/ Network:

- 3x Pathway Via12 PoE switches in a ring configuration
- 8x ETC Response 4-port sACN Gateways: one on each proscenium wall, three in the grid for cable picks, one in the FOH, one in the lighting booth, one portable
- Shielded Cat5e switched lines throughout the venue
- 2x Shielded Cat5e dry lines from mix position to DSR

Permanently Installed Positions:

SPOT BOOTH

- 2x - Lycian 1290 XLT 2Kw Xenon Follow Spots

FOH CATWALK #3

- 5x - 14° ETC Source 4 @ 750 watts: 7 ½" x 7 ½" (19.05 cm x 19.05 cm) colour frame
- 6x - 19° ETC Source 4 @ 750 watts: 6 ½" x 6 ½" (16 cm x 16 cm) colour frame

FOH CATWALK #2

- 10x - 19° ETC Source 4 @ 750 watts: 6 ½" x 6 ½" (16 cm x 16 cm) colour frame
- 2x - 19° ETC Source 4 Lustr Series 2 LED with I-Cue mirrors – Does not move

FOH CATWALK #1

- 13x - 26° ETC Source 4 @ 750 watts: 6 ½" x 6 ½" (16 cm x 16 cm) colour frames
- 4x - Robe T2 Profile (LED Moving Lights) – Normally do not move unless approved.

BALCONY RAIL

- 2x - 36° ETC Source 4 @ 750 watts: 12" x 12" (30.05 cm x 30.05 cm) colour frame
- 1x - 19° ETC Source 4 @ 750 watts: 6 ½" x 6 ½" (16 cm x 16 cm) colour frame
- 2x - 50° ETC Source 4 @ 750 watts: 6 ½" x 6 ½" (16 cm x 16 cm) colour frame

BOX BOOM LEFT

- 2x - 19° ETC Source 4 @ 750 watts: 6 ½" x 6 ½"(16 cm x 16 cm) colour frame
- 2x - 26° ETC Source 4 @ 750 watts: 6 ½" x 6 ½"(16 cm x 16 cm) colour frame

BOX BOOM RIGHT

- 2x - 19° ETC Source 4 @ 750 watts: 6 ½" x 6 ½"(16 cm x 16 cm) colour frame
- 2x - 26° ETC Source 4 @ 750 watts: 6 ½" x 6 ½"(16 cm x 16 cm) colour frame

FOH SLOT LEFT

- 3x - 26° ETC Source 4 @ 750 watts: 6 ½" x 6 ½"(16 cm x 16 cm) colour frame
- 1x - 36° ETC Source 4 Lustr Series 2 LED

FOH SLOT RIGHT

- 3x - 26° ETC Source 4 @ 750 watts: 6 ½" x 6 ½"(16 cm x 16 cm) colour frame
- 1x - 36° ETC Source 4 Lustr Series 2 LED

STAGE LEFT AND RIGHT LADDERS (Line set SL & SR).

4x - Ladders each side (height and wing position easily adjusted); ladders mounted on flying track running up and down stage 43'.
Fixtures easily removed or rehung.

- 8x - 36° ETC Source 4 @ 750 watts (16 per side): 6 ½" x 6 ½"(16 cm x 16 cm) colour frames
- 8x - 26° ETC Source 4 Lustr Series 2 LED
- 8x - 36° ETC Source 4 Lustr Series 2 LED

CYC LIGHTS (Line set 42)

- 12x Altman Sky Cyc (2 Cell Units) @ 1000 watts: 15 ¾" x 15 3/8" (40 cm x 39 cm) colour frames

Stage House Lighting Hang:

Note: the Playhouse utilizes a house hang that may allow for a shorter set up time. The standard house hang includes all permanent positions plus:

Pit Pipe (line set 0)

- 3x - ETC Desire LED Fresnel

1 Electric (line set 3)

- 4x - Robe T2 Profile
- 5x - ETC Desire LED Fresnel

2 Electric (line set 19)

- 4x - Robe T2 Profile
- 5x - ETC Desire LED Fresnel

3 Electric (line set 33)

- 4x - Robe T2 Profile
- 5x - ETC Desire LED Fresnel

Note: all stage electrics are able to be fully stripped of fixtures and cable. Dimmer power to electrics is done by Soca via breakout boxes.

Equipment Totals:

Note: Fixture inventory totals include fixtures in house hang plus spares.

- 17x – Robe T2 Profile MOVING LIGHTS: Fixture details available on request. Fixture total includes 1x spare
- 160x - ETC Source 4 @ 750 watts:
 - 22x - 50° ETC Source 4 Lens Tube: 6 ½" x 6 ½" (16 cm x 16 cm) colour frame
 - 67x - 36° ETC Source 4 Lens Tube: 6 ½" x 6 ½" (16 cm x 16 cm) colour frame
 - 48x - 26° ETC Source 4 Lens Tube: 6 ½" x 6 ½" (16 cm x 16 cm) colour frame
 - 32x - 19° ETC Source 4 Lens Tube: 6 ½" x 6 ½" (16 cm x 16 cm) colour frame
 - 5x - 14° ETC Source 4 Lens Tube: 7 ½" x 7 ½" (19.05 cm x 19.05 cm) colour frame
 - 1x - 10° ETC Source 4 Lens Tube: 12" x 12" (30.05 cm x 30.05 cm) colour frame
- 20x - ETC Source 4 Lustr Series 2 LED Body:
 - 14x - 36° EDLT - ETC Source 4 Lens Tube: 6 ½" x 6 ½" (16 cm x 16 cm) colour frame
 - 6x - 26° EDLT - ETC Source 4 Lens Tube: 6 ½" x 6 ½" (16 cm x 16 cm) colour frame
- 18x - ETC Desire LED Fresnel: 7 ½" x 7 ½" (19.05 cm x 19.05 cm) colour frame w/barndoors
- 22x - Quartzcolor Castor 270 @ 2000 watts: 12.5" round colour frame (Only 3 barndoors)
- 40x - Strand 3380 @ 1000 watts: 7.5" x 7.5" colour frame w/barndoors
- 4x - Rank Mizar MK2 @ 300 watts: 3" x 3" colour frame
- 24x - Altman PAR 64 Medium Flood @ 1000 watts: 10" x 10" (25.4 cm x 25.4 cm) colour frames.
- 9x - Altman PAR 64 Medium Floor (Bars of Six) @ 1000 watts: 10" x 10" (25.4 cm x 25.4 cm) colour frames.
- 12x - Altman Sky Cyc (2 cell units) @ 1000 watts
- 8x - Quartzcolor Pallas Ground Row (4 cell units) @ 1000 watts
- 4x - Altman Zip Strip (3 Circuits) @ 75 watts per bulb
- 12x - MR-16 Spots @ 75 watts
- 10x - Kreios FLX90 LED Worklights (Most normally have fixed locations around the stage)

Miscellaneous Gear:

- 6x - Rosco I-Cue Mirror
- 6x - Apollo smart move dual gobo rotators
- 6x - 4-Pin power supply
- 2x – DMX Opto Splitter
- Top Hats / Extenders
 - A wide selection of 6.25" and 7.5" short & tall top hats and half hats available
- Barn Doors
 - 3x - 12.5"
 - 40x - 8"
- Side Arms
 - 20x - 12"
- Template Holders
 - 25x - "A" size for Source 4
 - 25x - "B" size for Source 4
- 8x – Drop in Iris for ETC Source 4
- Floor Booms:
 - 8x boom bases and pipes are available, varying in height from 6' to 12'. (Subject to availability)

Atmospheric:

- 2x - Look Solutions Unique 2.1 DMX Hazer – (There will be an added fee for haze fluid)
- 2x - Ultratec Versa Fan DMX

Notes:

- All stage circuit connectors are 20-amp twist-lock (L5-20).
- A sufficient amount of single and multi-cable for use with theatre equipment stock is available. Adding equipment may require additional cable. We can adapt some L5-20 twist-lock or 5-15 U-Ground.
- A reasonable amount of 5-pin DMX and 4-pin scroller cable. Adding equipment may require additional cable.
- While we stock a good inventory of commonly used Rosco and Lee gel colours, we do not promise to have any particular colours that may be needed for your production.
- We have a small selection of Gobos in A & B sizes.
- Please always check the latest Lightwright paperwork for the most up-to-date equipment totals and info.

Followspot Booth:

- The Spot Booth is located above / behind the seats in the balcony. It is accessed via the stairwell in the lobby (level 2) house left or house right. This location is also utilized for video projection.
- Spot Booth dimensions are 42' long x 18' deep
- The booth has clear-com, program sound, spot chairs, exhaust fans (no air condition) and a bathroom. The glass window is small, left over from the days when the booth was utilized as a projector location. There are some upstage limits to what the spots can hit.
- Spot Booth currently utilizes 2x - Lycian 1290 XLT 2Kw Xenon Follow Spots. Wheels are removed



Lighting Booth:

- The Lighting Booth is located center at the back of the main floor behind the seats. Booth is accessed from level 1 of the lobby, by going through coat check.
- The booth is rather small and has a sliding window that opens.
- There is a red spotting light mounted on the balcony rail



AUDIO

House Sound System:

- Full Range Left-Right System with Center Fill - (2x Meyer MSL 2A flown per side, 2x Meyer MSL 2A in the center cluster plus 2x EAW FR129z Trapezoid boxes in balcony center fill)
- 4x EAW FR129z Trapezoid Monitors (installed on SL and SR ladders)
- 2x Portable Meyer 650-R2 subs (normally live DSL and DSR)
- Meyer Galileo 616 Processor
- QSC Amplifiers
- AES/Analogue Lines at FOH Mix Positions for House or Tour Console

Hearing Assist:

- Listen Tech (LCS-121-01) Wi-Fi/RF Advanced System. This system combines Wi-Fi and RF technologies to give compliant audio coverage PLUS expanded coverage to everyone with a smartphone or tablet.
- 24x Listen Tech Receivers (72 MHz) with universal ear speaker plus some neck loop.

Touring Mix Location - Centre Orchestra:

- The audio mix position occupies, seats 21-28 in rows 15-16
- AC Power, AES, Analogue, and Ethernet Links Available at FOH mix position
- 2x Ethernet lines from SL Monitors position to FOH Mix
- Sound snake traverses from stage left location to FOH mix location via 130' (39.6m) run along the wall of the venue
- Pipe and Drape available to enclose mix position

Note: THESE SEATS MUST BE HELD FROM SALE IN ADVANCE SO THEY CAN BE REMOVED FOR YOUR EVENT (IF REQUIRED)

Note: production is not permitted to use any space that is designated for mobility seating

Touring PA Positions:

- There are no points for a touring PA

Portable Speakers:

- 4x - EAW Sm 129z1 Wedge Speakers
- 4x - EAW FR129z Trapezoid Speakers
- 4x - EAW FR129z Flown (Side Fills, Two per side)

Surround Sound Speakers:

- 6x - JB11 model H3-40 (2x below balcony, 4x above)
- 4x - EV 8D (Below balcony)

Note: the surround sound system is processed by an Allen & Heath IDR 10x10

FOH House Mixing Console:

- AVID S3L
- Console I/O is 48 in and 24 out
- 4x Stage 16 boxes: (1x Booth, 1x RF Rack DSL, 2x Floaters)
- No Waves card
- 1x Meyer Galileo 616 for signal processing

Monitor House Mixing Console:

- AVID Venue S6L 32D (E6-112 Engine)
- Console I/O is 8 Analog in 8 Analog Out and 8 in/out standard AES
- Stage 64 Monitor Rack is 48 In / 16 Analog Out

Note: this console is shared between venues. Must confirm availability with venue.

Playback Sources:

- MacBook Pro with Q-Lab 4.4.5
- Avid SL3 On Board USB (No auto pause)

Paging & Program:

- Complete program interrupt paging system to lobbies, dressing rooms, rehearsal rooms, wardrobe room, hallways etc. from stage manager station down stage right
- System processed via Allen & Heath IDR 8x8

Intercom:

- Two (2) Channel Clear-Com to all operating stations with the master station in projection booth.
- Portable stations are available.
- 1x FreeSpeak II 5 Base Station with 4x FreeSpeak II BP19 Beltpacks & CC110 Lightweight Single-Ear Headsets. Note: there is one (1) spare beltpack that is shared between the QET and Playhouse venue if needed.

Microphones / DI's:

- | | |
|---------------------------------|---|
| • Shure SM58 | 4 |
| • Shure SM57 | 4 |
| • AKG 451 with Shotgun Adapters | 1 |
| • AKG D112 | 1 |
| • AKG C414 XLS | 4 |
| • AT Pro 37R | 4 |
| • Crown PZM Plate Mic | 4 |
| • Neumann KM 184 | 6 |
| • Schoeps No. 139007 | 2 (stereo Set CMC 6+ MK5 (adjustable patterns / matched pair) |
| • Sennheiser MD 421-II | 4 |
| • Sennheiser Drum Pack II | 1 (e900 series drum mic kit) |
| • Radial JDI | 6 |

Stage Wireless Mics:

- 2x Shure Axient AD4Q Quad receivers (max 8 channels from the options below)
 - 8x Shure AD1 / bodypack transmitters
 - 8x Shure AD2 KSM8 Handheld Microphones
 - 4x Oscar Sound Technologies HM 701 Headset mic with TA4F connector
 - 8x Oscar Sound Technologies TL40 Lav mic with TA4F connector
 - 1x Countryman E6 headset (colour brown) with TA4F connector (check availability as headset may be used at other venue)

Lobby Wireless Mics:

- 2x Shure ULXD4 single receiver with Shure ULXD2 / SM58 Handheld transmitter

Microphone Lines:

- **Analogue:**
 - 16x Upstage Left Wall
 - 4x Downstage Left
 - 4x Downstage Right
- **Digital:**
 - 16x Downstage Left
 - 32x As Required

Speaker Lines:

- 10x - Upstage Left Wall
- 2x - Upstage Right Wall
- 2x - Downstage Left
- 2x - Downstage Right

Cables & Stands:

- Assortment of stands (K&M 210/9 tall / K&M 259 Short)
- 4x 12 Pair Sub-Snakes
- Short, Medium, and Long XLR
- 2 pair XLR snakes

Note: availability of above subject to prior reservation.

Audio Recording Rig:

- Avid SL3 On Board USB
- Lines available at back of Orchestra Center

Note: recording media not provided

Audio Booth:

- The Audio Booth is located behind/above the balcony seats House Left. Booth is accessed from the lobby on level 2 through a door House Left.
- The glass window slides open for mixing needs.



VIDEO

In 2022, the Vancouver Playhouse underwent significant upgrades to its video system, providing clients with an in-house solution for many of their video needs. Multi-camera video shoots for recording, streaming, projection or broadcast are all now possible. Additionally, we have improved our signal distribution infrastructure, which allows us to send or receive video signals to and from virtually anywhere in the theatre. Below is a summary of the equipment available. Please inquire if you have specific questions.

Note: there are added costs if using the video system. Please inquire for further information or if you have specific questions.

Note: while most parts of the system can do 4K, there still may be several concerns surrounding this format. Therefore, the venue will only confirm that we can run in Full HD.

Cameras:

- 2x Blackmagic Design URSA Broadcast 4K cameras (mounted permanently on roboheads on the balcony rail, at centre)
- 1x Blackmagic Design URSA Broadcast 4K camera with tripod, studio package and Canon 40X lens
- 2x Canon CR-N500 4K PTZ cameras (mounted permanently on either side of the stage, just downstage of the proscenium)
- 1x Canon CR-N500 4K PTZ camera with tripod
- 1x Marshall CV420-CS 4K compact camera w. 3.8-16mm lens
- 1x Blackmagic Design Micro Studio house camera (permanent wide shot of stage, from balcony rail)

Control Booth:

Video control is located in a dedicated room attached to the Spot Booth above the balcony

- Main and BU QLab 4/5 playback computers. Recommended codes for video files are: ProRes 422 Proxy, Hap Standard, ProRes 422 LT, Hap Q, Photo-JPEG, H.265, and H.264
- Main streaming computer on dedicated show internet network
- Up to 8x channels of video record (4x channels ProRes, 4x channels H.264)
- Blackmagic Design Constellation 8K switcher and 1 M/E control panel, camera shading, robo control, camera director and streaming/record stations
- 4K fibre signal distribution throughout theatre (stage left and right, upstage-centre, loading dock for connection to remote broadcast trucks, projection booth).



Projectors:

- 1x Panasonic PT-RZ12K3-chip, 1200 lumen laser projector broadcasting in Full HD
 - One ET-D75LE95 projector lens - 0.36:1 throw ratio
 - One ET-D75LE06 projector lens - 1.0-1.2:1 throw ratio
 - One ET-D75LE30 projector lens - 2.7-5.2:1 throw ratio
 - One ET-D75LE40 projector lens - 5.1-8.2:1 throw ratio
 - One ET-D75LE08 projector lens - 8.2-15.4:1 throw ratio
- 1x Panasonic PT-RZ21K 3-chip, 20000 lumen laser projector broadcasting in Full HD (This projector is normally for the Plaza and QET. Please confirm availability)

Note: all throw ratios based on a 16:9 image

Projection Screen:

- 1x Portable AV Stumpfl Vario Frame - 11'-3" x 20' with a single front / rear projection surface – stored flown onstage
- 1x Projector (Movie) Screen - 32' x 20' with adjustable masking. Fixed on lineset #7
- 1x Cyclorama – generally used with house projector flown on lineset #17 with Ultra short lens – Max Image size 18' x 32'

Miscellaneous Gear:

- Various video cross converters
- 2x each of 50", 42" and 32" confidence monitors w. stands
- Dsan PerfectCue remote slide cuing system
- Dedicated clear-com

Projection Booth:

- The Projection Booth is located above / behind the seats in the balcony. It is accessed via the stairwell in the lobby (level 2) house left or house right. This location is also for the spots.
- There is a small scaffold kit here to allow for the correct projection angle.



Lobby TV Video:

- To display content on the lobby TVs - This system is run from Audio Booth via QLab and requires the following formats:
 - QuickTime ProRes 422 Proxy, ProRes 422 LT, PhotoJPG, Hap* formats (preferred)
 - Or via QLab in any format supported by AVFoundation
 - Or via PowerPoint

Ki Pro GO Series

Approved Media

Media and Configuration Information for USB Drives

Introduction

This document details approved media types and media formatting recommendations for the Ki Pro GO Series of digital recorders including the Ki Pro GO and Ki Pro GO2.

Media Formatting

For the best results, AJA Video Systems recommends formatting all media to ExFAT prior to use with the Ki Pro GO Series, due to file size constraints with other formats.

In some cases, drives ship formatted as NTFS. Those drives **MUST** be reformatted to ExFAT prior to use, and this is indicated with Notes in this document.

Multi-Channel/Redundant Recordings

AJA recommends the SSD drives listed in this document be used for multi-channel and/or redundant recording with the Ki Pro GO Series.

Supported USB Thumb Drives (Single Channel Recordings)

Transcend JetFlash 780

- Transcend JetFlash 64GB = TS64GJF780
- Transcend JetFlash 128GB = TS128GJF780
- Transcend JetFlash 256GB = TS256GJF780

Transcend JetFlash 910

- Transcend JetFlash 128GB = TS128GJF910
- Transcend JetFlash 256GB = TS256GJF910

Transcend JetFlash 920

- Transcend JetFlash 920 128GB = TS128JF920
- Transcend JetFlash 920 256GB = TS256JF920
- Transcend JetFlash 920 512GB = TS512JF920

Transcend JetFlash 930C

- Transcend JetFlash 930C 128GB = TS128GJF930C
- Transcend JetFlash 930C 256GB = TS256GJF930C

Corsair Flash Voyager GTX

NOTE: These drives MUST be formatted as ExFAT before use.

- Corsair Flash Voyager GTX128GB = CMFVYGTX3C-128GB
- Corsair Flash Voyager GTX256GB = CMFVYGTX3C-256GB
- Corsair Flash Voyager GTX512GB = CMFVYGTX3C-512GB
- Corsair Flash Voyager GTX1TB = CMFVYGTX3C-1TB

OWC Envoy Pro Mini

- OWC Envoy Pro Mini 500GB: OWCENVPMCA05

OWC drives ship pre-formatted in Apple's APFS format. To be able to be used with a Ki Pro GO or Windows PC, they must be re-formatted as ExFAT volumes. This is accomplished on a Mac via Apple's Disk Utility or through the use of the free "OWC Drive Guide" plug-in available for Windows from:

start.owc.com/windowsformat

Supported SSD Drives (Multi Channel/Redundant Recordings)

AJA PAK Dock Pro

- External dock for use with AJA PAK media.
- All PAK media from rev2 and above are supported, ExFAT format required.

Samsung Portable SSD T5

- Samsung T5 500GB: MU-PA500B
- Samsung T5 1TB: MU-PA1T0B
- Samsung T5 2TB: MU-PA2T0B

Samsung Portable SSD T7

The last letter in the part numbers only indicates the color of the unit.

- Samsung T7 500GB: MU-PC500(T,R or H)
- Samsung T7 1TB: MU-PC1T0(T,R or H)
- Samsung T7 2TB: MU-PC2T0(T,R or H)

Samsung Portable SSD T7 Shield

The last letter in the part numbers only indicates the color of the unit.

- Samsung T7 Shield 1TB: MU-PE1T0 (KR or S)
- Samsung T7 Shield 2TB: MU-PE2T0 (KR or S)

Samsung Portable SSD T7 Touch

NOTE: For these units, security **MUST** be set up before they can be used by the Ki Pro GO Series

The last letter in the part numbers only indicates the color of the unit.

- Samsung T7 Touch 500GB: MU-PC500(K or S)
- Samsung T7 Touch 1TB: MU-PC1T0(K or S)
- Samsung T7 Touch 2TB: MU-PC2T0(K or S)

G-Tech SSD

NOTE: These drives **MUST** be formatted as ExFAT before use.

| Description | Model Number | SKU | UPC |
|--------------------------|-------------------|---------|--------------|
| G-DRIVE mobile SSD 500GB | GDRRUCWWA5001SDB | 0G06052 | 705487206142 |
| G-DRIVE mobile SSD 1TB | GDRRUCWWA10001SDB | 0G06053 | 705487206159 |
| G-DRIVE mobile SSD 2TB | GDRRUCWWA20001SDB | 0G06054 | 705487206166 |

Contacting AJA Support or Sales

Please have all pertinent information at hand prior to contacting AJA support or sales.

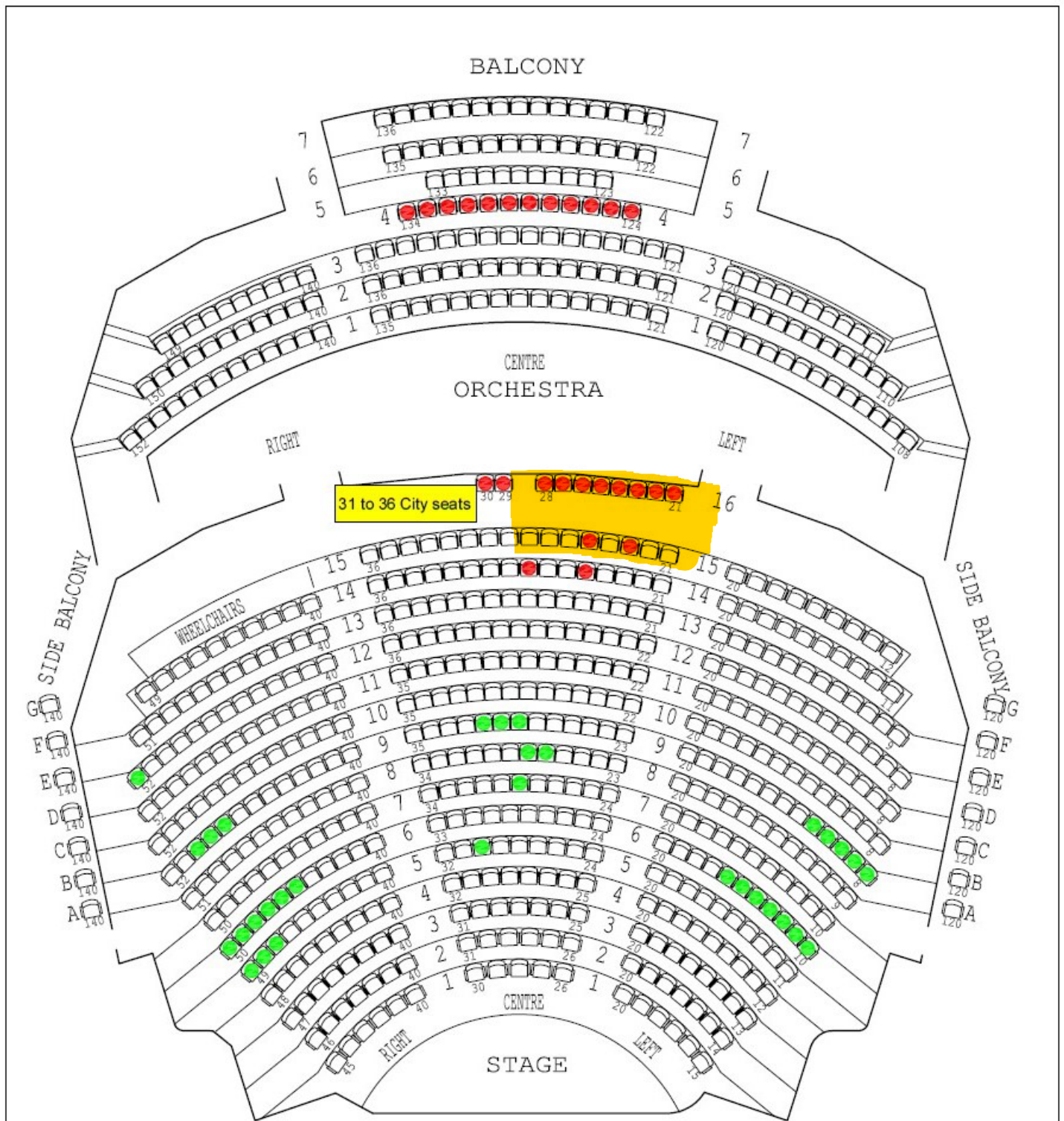
Support Telephone: +1.530.271.3190

Support Website: <https://www.aja.com/support/contact>

Support Email: support@aja.com

Sales Email: sales@aja.com

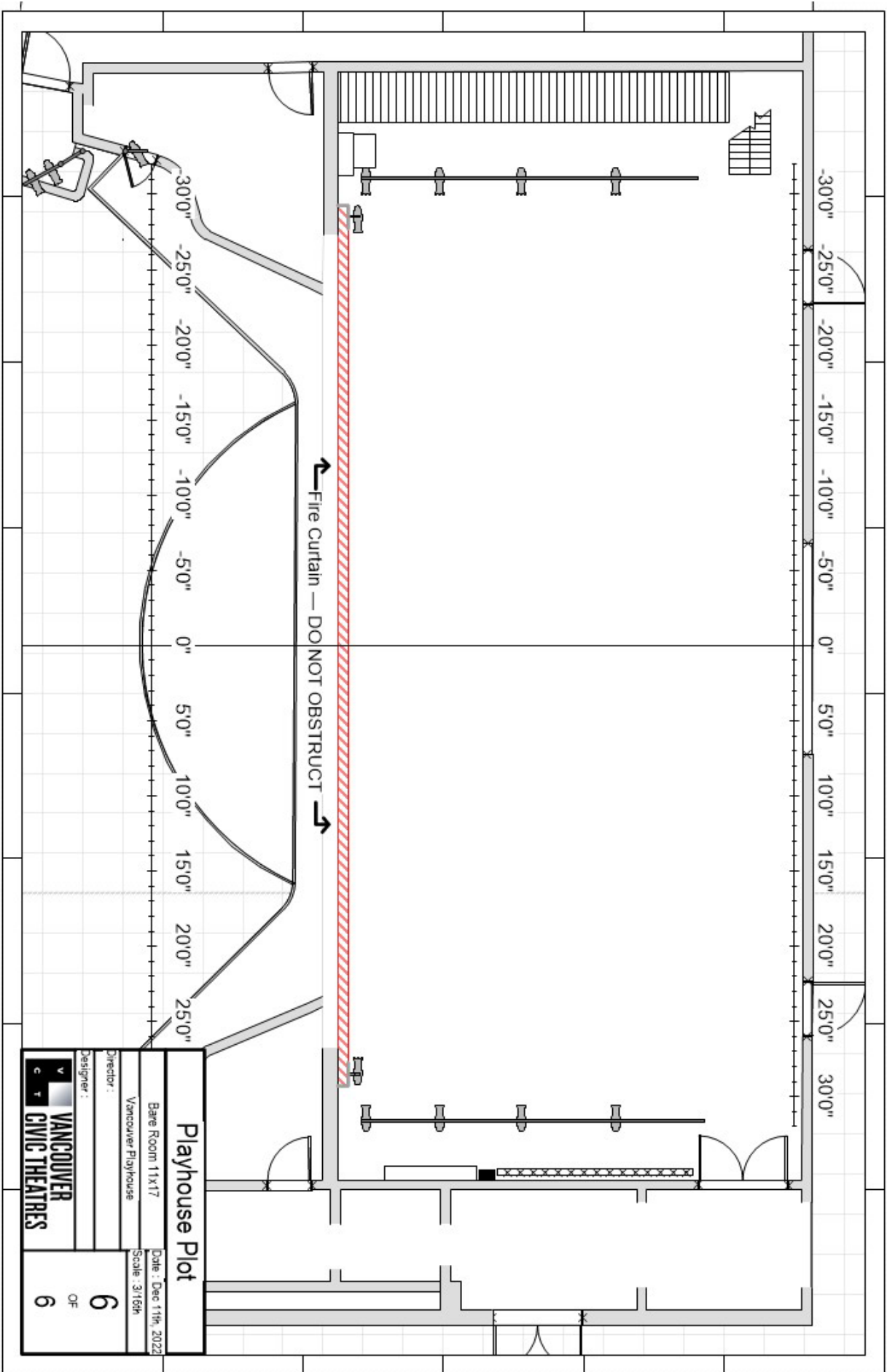
Shipping Address: AJA Video Systems
180 Litton Drive
Grass Valley, CA 95945, USA

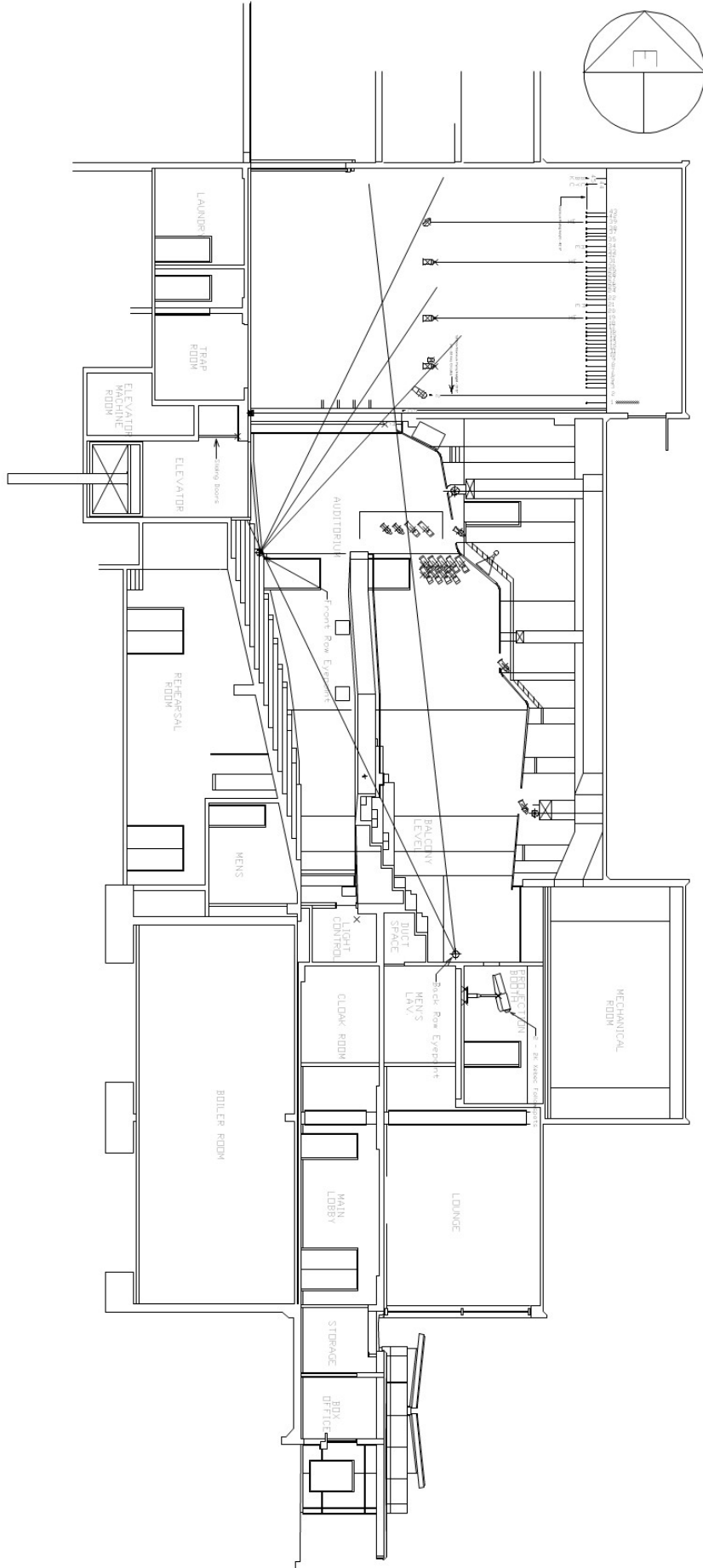


| | |
|-----------|--|
| ORCHESTRA | 487 includes 5 wheelchair accessible seats |
| BALCONY | 181 |
| TOTAL | 668 includes 5 wheelchair accessible seats |

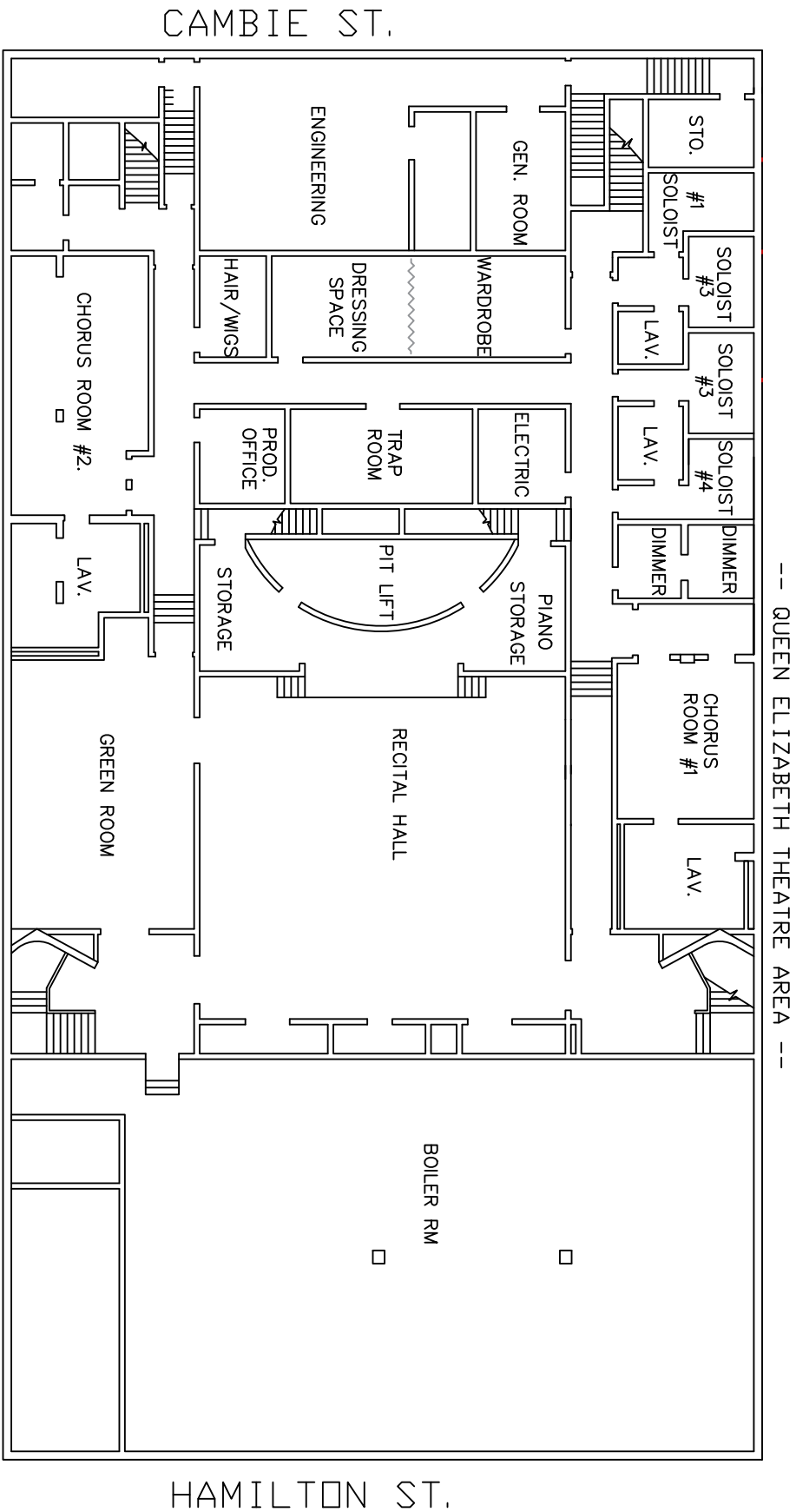
● 21" seats
● 18" seats

THE VANCOUVER PLAYHOUSE
VANCOUVER, BC, CANADA





Vancouver Playhouse Theatre
 Cross section
 Scale: 1/8" = 1'



VANCOUVER PLAYHOUSE

Below Stage Level

AUGUST 2023