

Orpheum

Technical Specifications – August 2025

Address:

865 Seymour Street
Vancouver B.C.
V6B 3L4
<http://vancouvercivictheatres.com/>

Seating Capacity: 2672

Stage Door: (604) 665-3035
Fax: (604) 665-2149
Admin: (604) 665-2193

Stage Door: Same as above

Main Theatre Audience Entrance: 601 Smithe Street (at the corner of Seymour St.)

Staff Contacts:

Paul McManus - Sr. Manager, Production	604-665-3024	paul.mcmanus@vancouver.ca
Brendan Keith - Technical Director	604-665-3043	brendan.keith@vancouver.ca
Jeff Leard - Head Stage Carpenter	604-665-3049	jeff.leard@vancouver.ca
General Booking Enquiries:		vctbooking@vancouver.ca

Loading Access:

- Main Location - In the alley between Seymour and Granville Streets:
 1. Truck waits to unload on Robson Street between Seymour and Granville (facing West), East of the Alley (back of Truck is at the Robson/ Seymour corner) on the South Side of the Street (East bound curb lane).
 2. A Traffic Control Vehicle will be in the same East bound curb lane just west of Alley, facing the Truck, blocking oncoming Traffic.
 3. Truck Turns Right (North) across 3 lanes of Robson St. into the Alley beside "5 Guys" Burgers.
 4. Truck then reverses and backs South, across Robson St. and down the alley to the Orpheum Dock on the East side of the alley (Low Clearance especially at the Cab / North. Please lower all suspension to aid with the 13'-9" height clearance of the dock overhang.)
 5. Often dumpster bins must be moved to enable Truck to turn in to the Dock. Also watch out for the lamp-posts along the alley.
- Do not attempt to enter the alley from Smithe Street.
- Street, via down ramp from sidewalk level to stage. This is mainly used for gear located with the buses.
- Loading Bays: One truck level dock with adjustable dock plate which is under the overhang of a residential tower. Dock clearance is 13'-9". There is 170 sqft of temporary storage space on the enclosed dock.
- Loading Doors: One Roll up door, 9'w x 9'h (2.74m x 2.74m)
- Dock Height: 3'-4" (0.99m) high, above street level
- Access to Stage: From loading dock on to Freight Elevator. Then down to stage and/or dressing rooms.
- Freight Elevator: Load capacity 12,000lbs. Located off Stage Right 7'-11"w x 7'-10"h (2.14m x 2.39m). Door opening and 8'w x 10'h x 19'-4"d (2.44m x 3.05m x 5.90m) inside
- Passenger Freight Elevator: Located off Stage Left by Stage Door. This allows access
- Stacking: Shows can use one of the house motor points with a house 1-ton motor. Spansets provided.
- Alternate: You can also load through the stage door entrance 5'-6"w x 6'-6"h (1.68m x 2.01m) at 865 Seymour

Note: Loading Dock and freight elevator is shared with the Annex Theatre and VSO School of Music

Parking Information:

- The venue has no on-site parking. Street parking is controlled by the City of Vancouver. Buses normally arrange to park at the metered spaces beside stage door.
- Shore power is available for busses. NO IDLING is permitted
- Bus and Truck parking may be able to be arranged by the Licensee in the lot across the street from Stage Door.
- Trucks cannot remain in loading dock bay once unloaded

**** Street parking is controlled by City of Vancouver. For street parking permit information, please visit the following links:**

[Information](#) about hosting events in Vancouver on public property – ie: streets and sidewalks. City is required to review/process any work requests for on street production parking.

Web form for [inquiries](#) to Film and Special Event office. Note: They deal with activity on COV streets and sidewalks only.



Street Bus Parking With Shore Power Box

ORPHEUM: BUS AND TRUCK PARKING / DOCK MAP



North >>>



Loading Dock Down Lane On The Left

Traffic Plan:

- The Civic Theatres has a Traffic Control Plan requiring flaggers and possible road closures when it comes to the movement of trucks in and out of the loading dock in the alley. The size of the plan and cost varies depending on the number of trucks and size.

USE OF HAZARDOUS MATERIALS IN THE VANCOUVER CIVIC THEATRES

Government of Canada legislation requires that the use of "controlled" products in our theatres shall comply with the rules under WHMIS (Workplace Hazardous Materials Information System). Controlled products include:

- (1) Compressed Gas
- (2) Flammable and Combustible Material
- (3) Oxidizing Material
- (4) Poisonous and Infectious Material
- (5) Corrosive Material
- (6) Dangerously Reactive Material

WHMIS regulations require that:

- (a) Anyone using controlled products in the workplace must be informed as to its safe storage, handling, use, and disposal.
- (b) All containers of controlled products must have warning labels attached that meet regulation requirements.
- (c) A MSDS (Material Safety Data Sheet) for any controlled product must be available and be maintained in the immediate work area.

Some substances such as explosives, radioactive materials, and tobacco are covered under separate regulations. The use of propane powered devices and the storage of propane tanks within the theatre premises is not permitted

Smoking and/or Vaping in our venues is strictly prohibited under our Civic Bylaws. This includes outside the venue within 20 feet (6 meters) of any doorway, window, loading bay, and/or air intake.

Flame / Pyro:

Use of any product or device that involves flame shall need to be discussed and approved by the Civic Theatres in advance. The proper approval / permits by the Licensee from the Vancouver Fire & Rescue Services shall also be required.

Firearms:

Use of any firearms shall need to be discussed and approved in advance by the Civic Theatres. All proper permits, licenses, storage/handling procedures will be required by the Licensee.

Haze and Fog:

Haze and Fog are permitted to be used onstage. However, the fire system must be set to bypass particulate sensors. Therefore, please check with the venue before energizing any of this type of FX equipment.

DELIVERIES IN ADVANCE

Due to limited space, the venue can only accept merch shipments and/or large stage deliveries on a day your event is in the venue (unless special permission has been arranged in advance with the venue). Should deliveries arrive without prior approval, they will likely be rejected/refused.

GLITTER / CONFETTI / STREAMERS

Glitter is no longer permitted in the venue. When it comes to Confetti and/or Streamers, only paper products may be approved. We can no longer accept Mylar as it is a single use plastic product. Please note: Confetti and/or Streamers require advanced venue approval prior to event. If approved, there will be a cleaning fee charged for their use.

ROOM CAPACITY & BASEMENT / 4TH FLOOR LIMITS

Each room in the venue has a capacity limit that needs to be followed. To comply with our evac procedures, large groups of people (over 20) total in the lower level or 4th floor will likely require a dedicated crew person assigned to the location. If the number of people exceeds (100), this may also trigger added security.

BACKSTAGE CATERING

The VCT will be implementing Authorized Caterers for both FOH and Backstage. Once this begins, productions will no longer be able to contract their own companies not on the list to provide food. This will not apply to artist hospitality or simple things such as pizzas or sandwich platters. Please check with the venue during your advance to determine current requirements.

COOKING

The VCT does not permit physical cooking in the venue that would normally require proper venting. This includes but is not limited to” stovetops, ovens, burners, woks, and/or deep fryers. Warming pots for soup and chafing dish fuel are acceptable. Please check with the venue in advance if you have any questions.

Note: The exception to this rule will be cooking taking place on the stove/oven located in small kitchen on the 4th floor.

PLAYING MUSIC FILES

The VCT can directly play songs/tracks that are provided on USB, or as files emailed to the technical department. Due to licensing, we are not able to take things such as Spotify playlists and play them from our equipment. Should you need to play tracks from a playlist, the production will need to provide the playback device (such as a laptop or tablet).

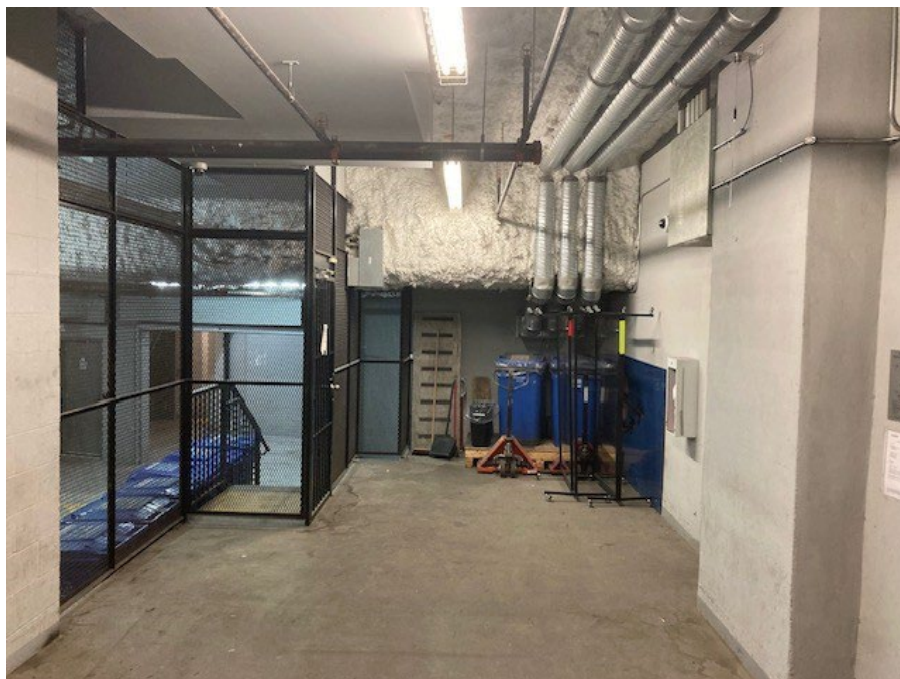
HOUSE HARLEQUIN DANCE FLOOR

To avoid the risk of potential damage If utilizing the house dance floor, it shall be understood that no sharp objects or tap dancing should take place on the surface. If you have any concerns, please discuss in advance. ***Please note, that the Orpheum does not have a dance floor in inventory.

STAGE SPECIFIC SAFETY REQUIREMENTS

- Steel Toed shoes are required if Car Loading. In any other situation they are recommended.
- Hard Hats are required by anyone who is on deck when Riggers are overhead or if working at the bottom of a lift.
- All Riggers / Flys must wear radio chest harnesses when working overhead. Attaching a radio (other than in the approved harness) is not permitted.
- If rigging / working overhead, all pockets must be empty of any loose items.
- Harnesses and Lifelines need to be used as required by the venue, based on the work. Locations are indicated by visible lifelines and/or anchors.

LOADING DOCK



Loading Dock area is around 30' X 12' (9.14m X 3.66m)

STAGE INFO

Stage Floor:

- Maple, stained a medium tan, with performing area of 56' wide X 43'-6" deep (17.07m x 13.26m). Upstage area reduced due to shell curve.
- 1x stage trap located DSR. Trap lid is removable in three sections to allow for the raising / lowering of the Wurlitzer Organ. Trap size is 6'-10" x 6'-0" (2.08m x 1.83m)
- Stair deck plugs can be removed from DSL and DSR to allow access to and from the auditorium
- Screwing and drilling into the floor is permitted, subject to approval. There may be a charge to repair holes in the floor.

Note: stage level is referred to as Level 0

Stage Dimensions:

- | | |
|---|---|
| • Proscenium opening (fixed): | 56'w X 37'h (17.07m X 11.28m) – Height Curves lower SL and SR |
| • Proscenium to rear wall: | 27'-6" (8.38m) |
| • Proscenium to front of apron: | 16' (4.87m) |
| • Stage ceiling height: | Varies due to shell ceiling. Please see Rigging Section |
| • Stage height from front row of audience: | 43.3" (1.1m) |
| • Distance from stage to booth: | 121' (36.88m) |
| • Distance from stage to balcony rail: | 35' (10.67m) |
| • Distance from spot boot to proscenium | 137' (41.76m) |
| • Cable run from stage to FOH mix position: | Tunnels are 100' long |
| ○ From Stage Left (Audio Monitors) through tunnels to FOH Mix is 125' | |
| ○ From Off Stage Right (Lighting), cross stage front , through tunnels to FOH Mix is 200' | |

Fly System:

- While the original building has a fly grid. The creation of the 4th floor rehearsal hall (back in the day) created a new floor which covers all fly tower access. Therefore, the building no longer has a fly system and utilizes motor points
- There are 2x sets of 5 rope lines rigged between 4th Floor and the Orchestra shell to hang small objects such as banners. One set is located mid stage and one set is upstage.
- Upstage of the proscenium arch is the only (small) catwalk that spans SL/SR. This allows access to portions of shell rigging.

Rigging Points With Motors (Installed):

- As the venue has a permanent orchestra shell we utilize installed 1-ton motors in specific locations. It is not possible to add more points. If the location of our motors will not work for an event, a Mother Grid would need to be rented/installed first.
- The follow motor locations are available. Please see drawing at the end of the specs for further details:
 - 3x 1-ton FOH points (in-line) 14'-9" DS from the center DS edge of the deck.
 - 3x 1-ton points (in-line) 6'-8" US from the center DS edge of the deck.
 - 1x 1-ton point SL & SR 10'-10" US from the center DS edge of the deck. (These are normally used as Road Audio points). The house array with their 3 points live just offstage of these points.
 - 3x 1-ton points (in-line) 22'-10" US from the center DS edge of the deck
 - 3x 1-ton points (in-line) 34'-10" US from the center DS edge of the deck
- Due to the shell, the height limits of the motor (truss lines) are as follows:
 - Down Stage Truss Line SL & SR 29'h (due to shields)
 - Mid Stage Truss Line SL & SR 33'h
 - Up Stage Truss Line SL & SR 30'-6'h

Note: all heights are floor to plaster at the motor hook point. If moving off stage or up stage from the points the shell ceiling lowers (curves)

Note: there is a ¼ ton motor hung in the ceiling at the center of the balcony rail to aid with the installation of projectors on to the projector sled.



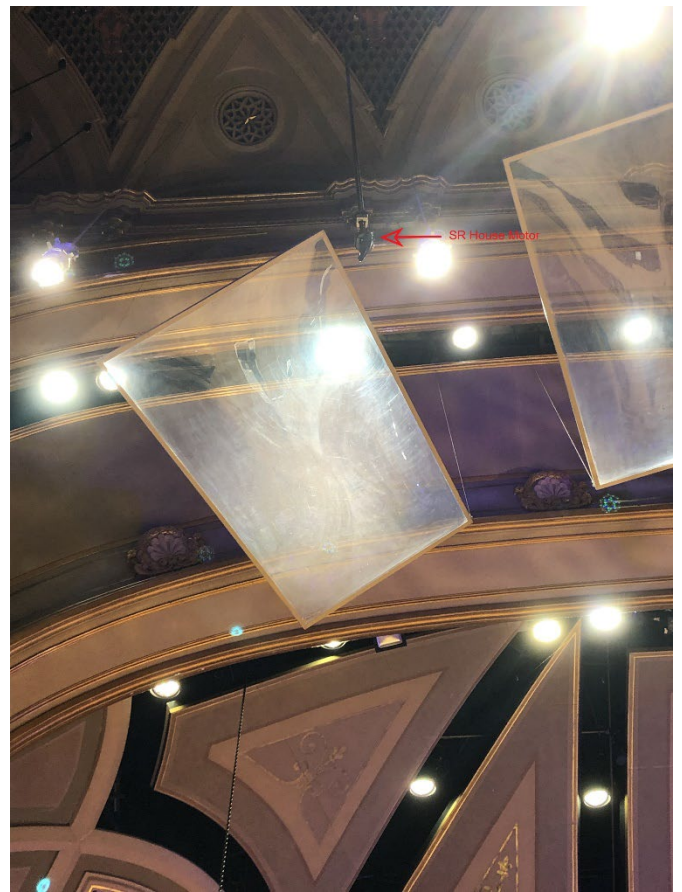
Mother Grid **The grid would need to be rented as it is not part of venue inventory**



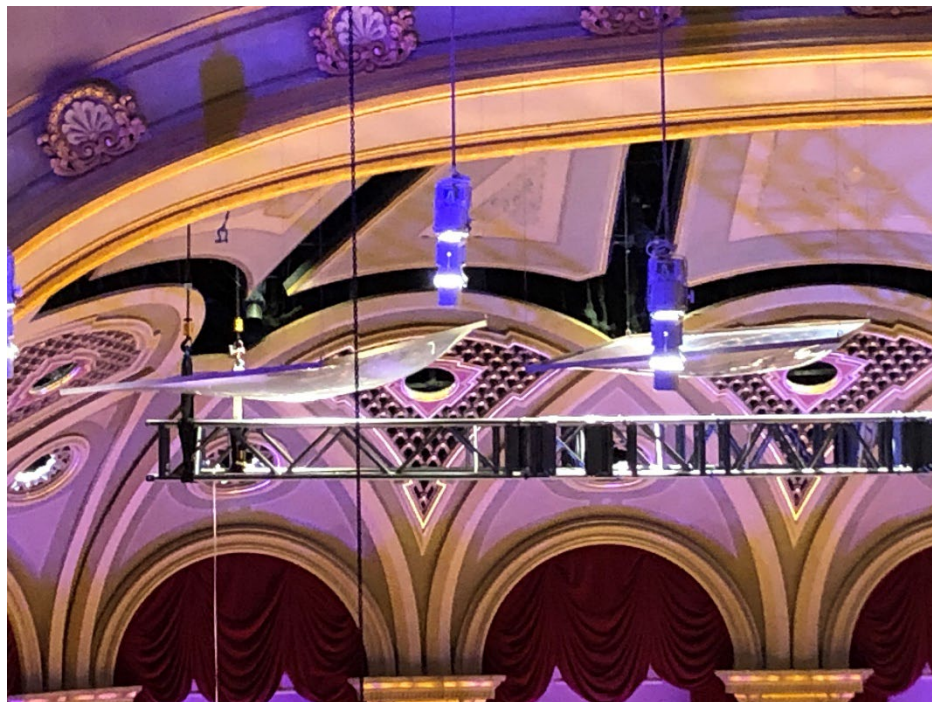
Onstage Chain Motor Locations



DS Chain Motors Around Lighting



DS Chain Motors Around Shields



MS Chain Motors and Truss Showing Curve of Shell Ceiling

Stage Draperies:

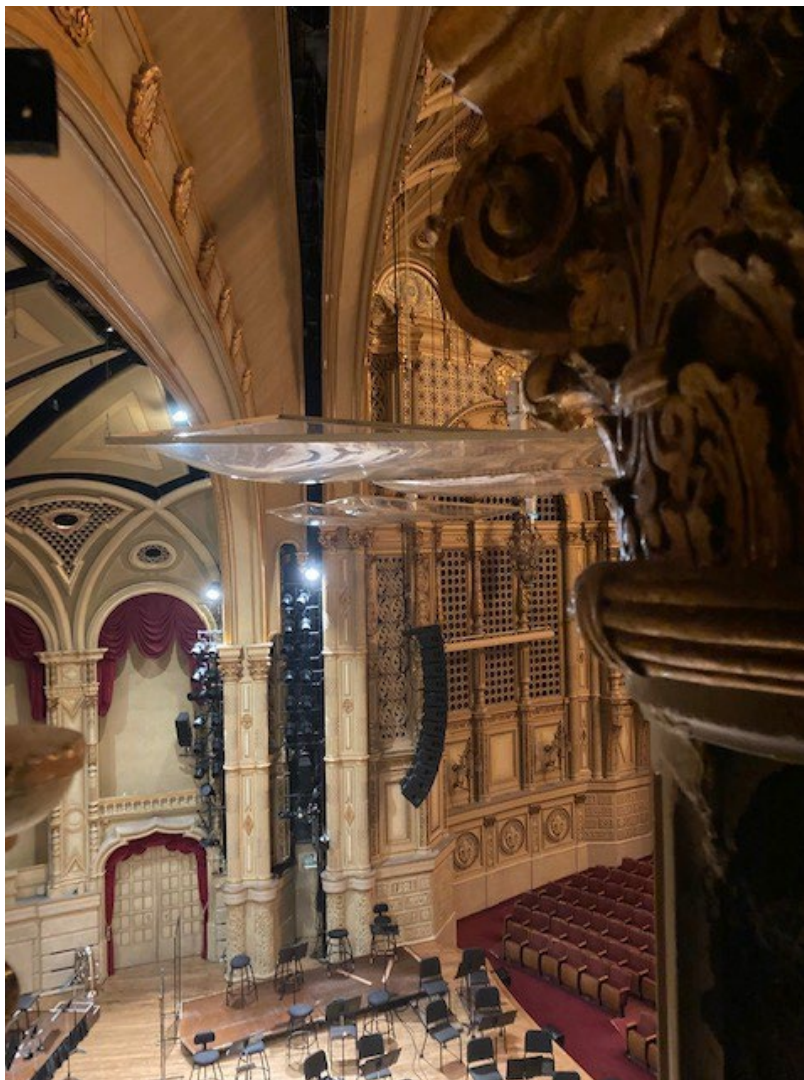
- None

Stage Permanent Shell:

- The venue has a permanent ornate orchestra shell that encases the sides and upstage areas of the stage. The shell also has an acoustic ceiling which limits lighting and rigging option. (Please see attached photos)
- The shell limits the ability to bring large items on and off the stage. Both SL and SR there is 1x set of double doors to go to/from the stage/wings. 6'-4" w x 7' h (1.93m x 2.13m). The height tapers to 9' (2.74m) in the center. There is also a small single door downstage SL 2'-1" w x 6'-7" h (0.64m x 2.01m) and SR 2'-2" w x 6'-7" h (0.66m x 2.01m). These are just upstage of the proscenium.
- There are 4x sound reflection shields hung downstage along the proscenium line for the Orchestra. These are rigged at 29' h (8.84m).
- Due to the shell there is a very narrow, low height "tunnel" that can act as a cross-over upstage of the shell 2' w x 6' h (0.61m x 1.83m). Nothing large will pass through this passageway



Showing The Shell From The Balcony



Showing The Shields From Side Lighting Position

STAGE EQUIPMENT

Note: supplementary equipment - SUBJECT TO PRIOR RESERVATION as this equipment can be shared with the Annex venue

Risers:	4x @ 4' X 8' X 8" high (Code: A8) 4x @ 4' X 8' X 16" high (Code: A16) 4x @ 4' X 8' X 24" high (Code: A24) 3x @ 4' X 8' X 24" to 36" (Adjustable Staging Concepts Risers) 2x @ 4' X 8' X 8" high with angled right side (Code: BR8) 2x @ 4' X 8' X 8" high with angled left side (Code: BL8) 2x @ 4' X 8' X 16" high with angled right side (Code: BR16) 2x @ 4' X 8' X 16" high with angled left side (Code: BL16) 2x @ 4' X 8' X 24" high with angled right side (Code: BR24) 2x @ 4' X 8' X 24" high with angled left side (Code: BL24) 4x @ 2' X 8' X 8" high (Code: G8) 1x @ 2' X 8' X 24" high (Code: G24) 2x each @ 2' X 8' X 8" high with angled side (Code: HR8 & HL8) 2x each @ 2' X 8' X 16" high with angled side (Code: HR16 & HL16) 4 x @ 2' X 4' X 8" high (Code: F8) 4 x @ 2' X 4' X 16" high (Code: F16) 2 x @ 4' X 4' X 8" high (Code: E8) 2 x @ 4' X 4' X 16" high (Code: E16) 2 x @ 4' X 5' X 8" high with angled left side (Code: DL8) 2 x @ 4' X 5' X 8" high with angled right side (Code: DR8) 2 x @ 4' X 5' X 16" high with angled left side (Code: DL16) 2 x @ 4' X 5' X 16" high with angled right side (Code DR16) Steps and Skirts and some railings are available. All riser decks are a dark brown.
Choir Bleachers:	4x units. Each bleacher is capable of expanding up to 7 rows with the outside 2 units holding 5 people per row, and the inside 2 units holding 7 people per row. There is a max capacity of 168 people using all 4 units expanded to the max of 7 rows. Time and crew is required to bring these units down from storage and setup
Speakers Lectern:	1x Oak Wood 2'6"W x 2'-3"D x 3'9"H 1x Plexi 2'-3"W x 1'-9"D x 3'-10"H
Conductor's podium:	1x Conductors - 4"h (6' x 4') 1x Speakers – 8"h (3' x 4')
Music Stands:	75x Manhasset and King model, available with LED stand lights
Chairs:	98x black, padded Wenger orchestra chairs (new style) 28x black, padded orchestra chairs (old style) 8x Cello Wenger chairs Selection of backless wooden bar stools – including 6x matching Black Wooden Stools 29" high
Personnel Lifts:	1x Battery powered "Handy Herman" 24D personnel lift (24' platform) 1x Plug-in powered "GENIE" PLI-30 personnel lift (30' platform)
Piano:	1x 9' Steinway Grand model D (serial# 458773 from 1978 / Rebuilt 2024/2025). <u>The venue does not permit our piano to be used as a "Prepared Piano"</u> (Tuning cost is payable by lessee) 1x Yamaha Upright. (Tuning cost is payable by lessee) (Lives in the rehearsal hall on Level #4)

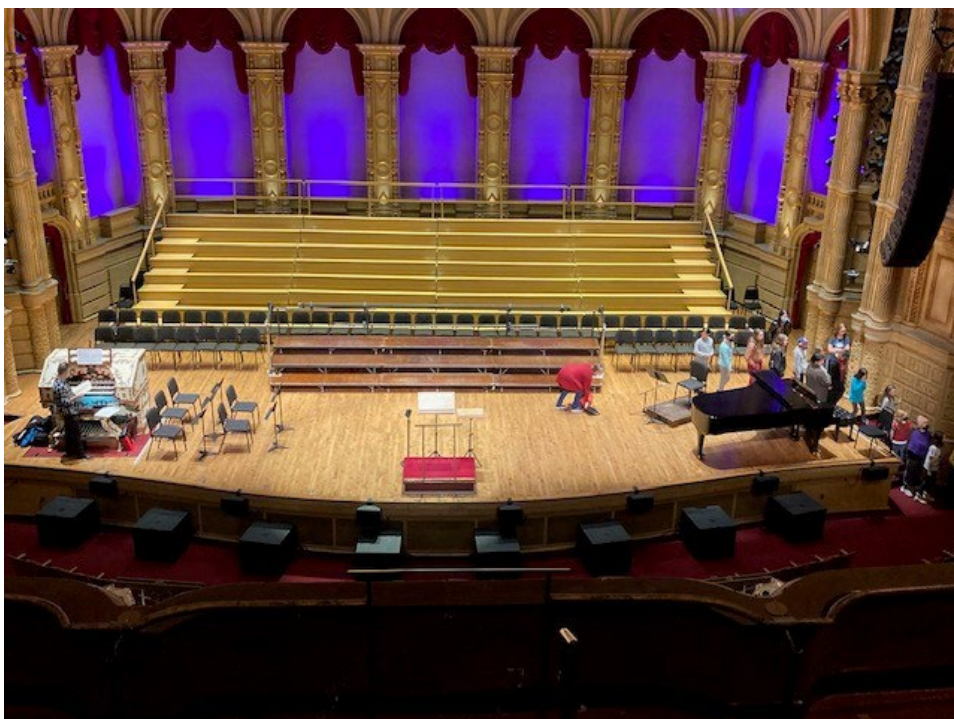
Wurlitzer Organ: Stores and can be accessed/played from the basement. It sits on a hydraulic lift that allows the organ to be raised to stage level through a trap in the stage floor (DSR). This was meant as a silent movie organ. Therefore, the organ pipes and sound effects are located on both SL and SR of the proscenium. There are grills and baffles in the walls that allow the sound to enter the auditorium.

Truss: 52' of 12" Christie Lites - Type A - Box Truss (Normally hung on the FOH 3 motors)
44' of 12" black powder coated ladder truss.

Dance Floor: None



FOH Truss



Bleachers

ORCHESTRA PIT

- None. The orchestra pit was covered over long ago and now forms the thrust stage of the venue.
- The Wurlitzer Organ was originally inside the Orchestra Pit. As it remains in its original location, the thrust stage was built overtop with a trap door that allows the organ to be brought up from the basement to stage level on a hydraulic lift.

Note: the thrust stage puts a performer further downstage from when the venue was originally designed. Therefore, the sight-lines from the upper balcony can be slightly restricted if a performer is at the DS edge of the stage.

STAGE CREW

- All rentals include the services of a Head Carpenter (Stage supervisor) and House Electrician (console operator) for up to 8, straight-time hours each. Theatre Rental Grant Licensees will also have Head Sound included for up to 8, straight time hours. Overtime hours will be billed to the Licensee.
- Additional stage crew is supplied through agreement with IATSE Local 118. The total number of stage crew needed to staff an event will be determined by the Theatre's Technical Department, in consultation with the Licensee.
- At all times, stage activity must be supervised by the applicable house technicians. Productions requiring access to the wardrobe facilities will require a house wardrobe person.
- Meal breaks must be given every 4 hours, except that once in a day, stage crew may work a 5 hour block before a meal break is required. If stage crew are required to work beyond these times without a meal break, they will be paid a premium rate until such time as they are able to take their break.
- Meal breaks can be either a 1-hour unpaid break or a ½ hour paid break. A 15 minute coffee break is usually taken at the mid-way point of a 4 or 5 hour block.
- The minimum crew call is 4 hours. A break of greater than 1.5 hours between calls will constitute a new "minimum call"

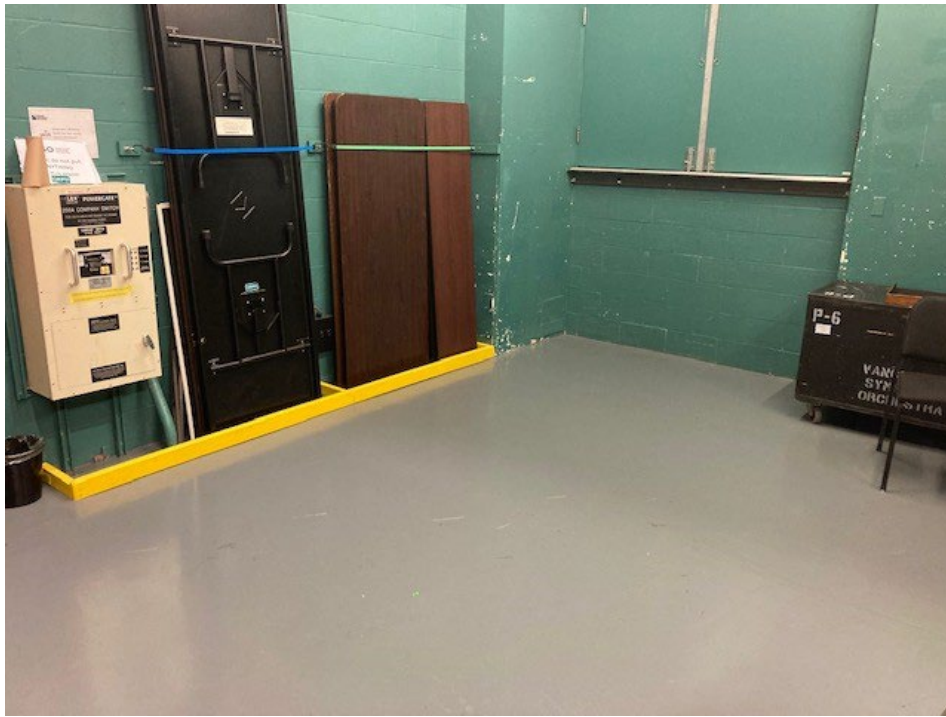
Note: There is a small crew room located in the basement with a small kitchen, fridge, microwave, sink and lockers

FACILITIES

Off Stage Right @ Stage Level:

- 18' X 17' X 11' high (5.49m X 5.18m X 3.51m) – Gives 300 sqft of temporary storage
- Elevator to the dock is located here.
- Partly Maple Floor closer to the stage and then transitions to painted concrete





Extension @ Stage Level:

- With the construction of the condo tower behind the venue we gained a large storage bay behind the stage. This is mainly accessed from off stage right, through a set of large double doors via a ramp up (the extension's floor is 10" higher)
- 73' X 20' X 50'h (22.25m X 6.10m X 15.24m) – Gives shows around 400 sqft of temporary storage
- Storage space is limited as this area also acts as venue storage. Please confirm availability in advance.
- Concrete Floor. This space is outside of the original Orpheum building.



4th Floor Rehearsal Room:

- Located above the stage on level 4. Can be accessed by either the stairwells on SL or SR, plus via the passenger elevator located SL by Stage Door.
- 62'-6" x 29'-6"x14'h (19.05m x 8.99m x 4.27m) is the floor the main room (no pillars)
- This space has lino floor, includes tables and chairs for catering needs. Far end has sofas, large chairs, and coffee table
- Bathrooms are located at one end of the room
- Adjoining kitchen with sink, fridge, and stove located at other end of the room
- Some sections of this space can be used for venue and symphony equipment storage.



Dressing Rooms:

- 4x Solo Dressing Rooms (including Maestros)
- 6x Medium Sized Rooms (approx 4 people)
- 2x Large Chorus Dressing Rooms (approx 20 people)
- 1x Green Room with extra mirrors on one side (6 people to use mirrors)

- Solo Dressing Room #1 (Maestro's Room)
 - Located off stage right - up stairs on Level 1
 - This rooms consists of a sofa, upright piano, and bathroom with shower.



- Solo Dressing Room #2 and #3
 - Located off stage right - up stairs on Level 2
 - These rooms consists makeup mirrors, sink and a toilet
 - Both share 1x small standup shower



- Dressing Room #4 - (Can act as Promoter / Tour office)
 - Located off stage left - up stairs on Level 1
 - This rooms consists makeup mirrors, sink and a toilet
 - Shares 1x small standup shower (accssed from hall)
 - The lockers in this room are for the use of the Vancouver Symphony
 - Passanger elevator does not go to this floor



- Dressing Room #5
 - Located off stage left - up stairs on Level 1
 - This rooms consists makeup mirrors, sink and a toilet
 - Shares 1x small standup shower (accssed from hall)
 - The lockers in this room are for the use of the Vancouver Symphony
 - Passanger elevator does not go to this floor



- Dressing Room #6 and #7
 - Located off stage left - up stairs on Level 2
 - These rooms consists makeup mirrors, sink and a toilet
 - Shares 1x small standup shower accssed from end of hall
 - The lockers in this room are for the use of the Vancouver Symphony
 - Passanger elevator does go to this floor



- Solo Dressing Room A
 - Located in the basement one floor below stage level, 10' x 9'
 - This rooms consists of makeup mirrors, clothes bar, sink, toilet and shower (2 people)
 - The lockers in this room are for the use of the Vancouver Symphony



- Dressing Room B
 - Located in the basement one floor below stage level, 14' x 12'
 - This rooms consists of makeup mirrors, clothes bar, shower (approx 4 people)
 - Shares toilet and sink from hall with Room C
 - The lockers in this room are for the use of the Vancouver Symphony



- Dressing Room C

- Located in the basement one floor below stage level, 14' x 12'
- This room consists of makeup mirrors, clothes bar, shower (approx 4 people)
- Shares toilet and sink from hall with Room B
- The lockers in this room are for the use of the Vancouver Symphony



- Dressing Room D (Chorus)

- Located in the basement one floor below stage level, 23' x 20'
- This room consists of makeup mirrors, clothes bars, 3x toilets, 3x sinks 1x shower (approx 20 people)
- The lockers in this room are for the use of the Vancouver Symphony



- Dressing Room E (Chorus)
 - Located in the basement one floor below stage level, 23' x 20'
 - This room consists of makeup mirrors, clothes bars, 3x toilets, 3x sinks 1x shower (approx 20 people)
 - The lockers in this room are for the use of the Vancouver Symphony



Green Room:

- Located in basement one floor below stage level 20' X 43' 6" X 7'9" high (6.10m X 12.95m X 2.36m)
- Room has sofas, small kitchen with fridge and microwave
- Has one wall with makeup mirrors
- Located one floor below stage



Wardrobe Room:

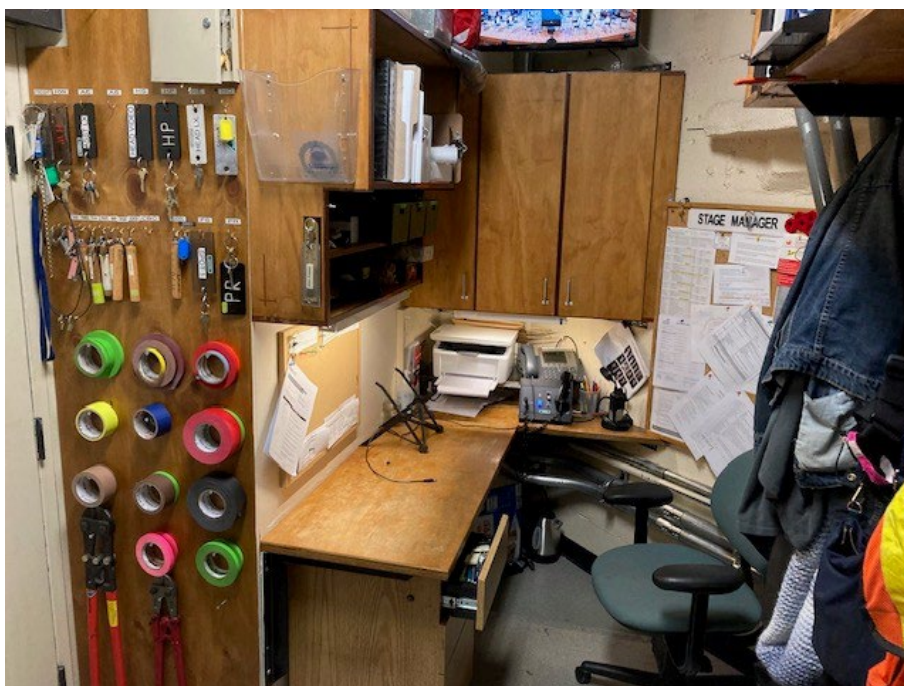
- Located off stage left in the basement on floor below stage level 9' x 17'
- Irons, ironing boards, steamers, sink, 1x washer and 1x dryer

NOTE: use of wardrobe facilities and equipment will require House Wardrobe staff



Guest Production/SM Office / Casual Carp Office @ Stage Level:

- Located off stage right directly in the proscenium. The casual carp side is sometimes used by city technical staff who need access to a computer / printer onstage. The Head Carpenter Office is located stage left across from stage door. The other desk in this office is utilized by Symphony Production who will clear the desk when another show is using the venue.
- CCTV of the stage located on the wall along with Clear-com



Props Room @ Stage Level:

- Located off stage left. This small room consists of 1x table and stores props related items.
- Utility sink with mops and buckets
- This room also acts as the pass-through to the Audio storage room

Storage Rooms – Level #3:

- Bleacher and Piano storage is located off stage right and can be accessed via the stairs or freight elevator
- Symphony storage rooms are located off stage left and can be accessed from the stairs or passenger / freight elevator

Note: this level is limited to venue needs and usage

Workshop:

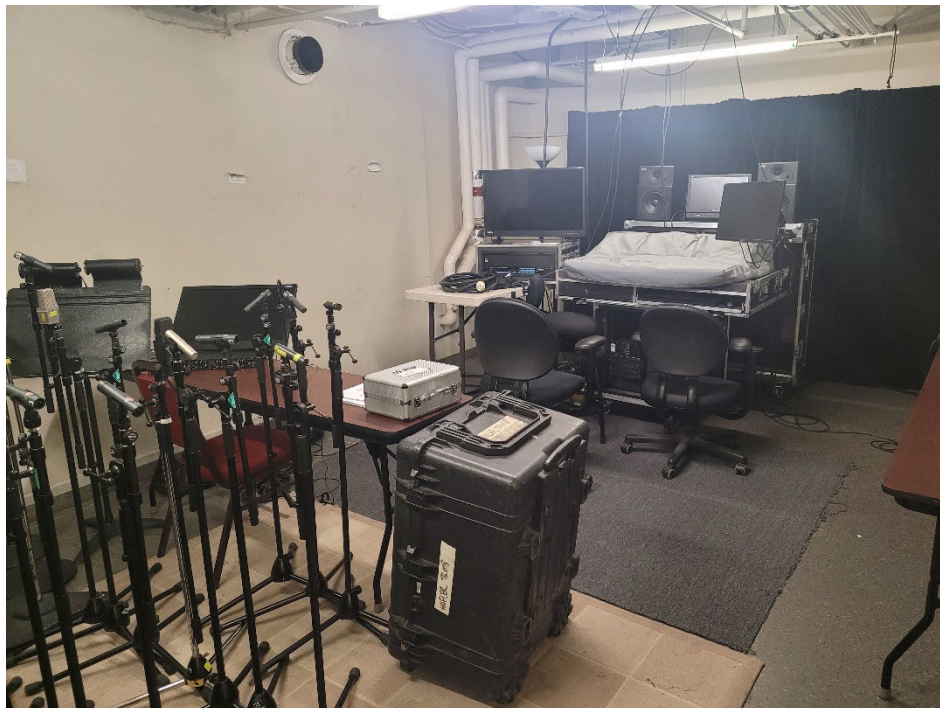
- Located in the basement one floor below stage. This room is for venue use / storage of sound, lighting, carpentry equipment and supplies

Accessible Bathroom:

- Located in the basement one floor below stage. This room has a toilet, sink, plus a full open accessible shower

Bass / Cello Storage Room:

- Located in the basement on floor below stage. 22' x 12'
- This is normally a storage room for the Vancouver Symphony's Cello and Bass instruments and cases. It can also act as a temporary audio recording room.
- Requests to possibly use this room must be made to venue in advance.



Communication and Internet:

Note: *phone and WIFI information: Production Access only, not for use by general public*

- Telephone lines on request.
- ADSL wired connection available in select locations only (including dressing rooms).
- City Business WI-FI coverage backstage, in dressing rooms, 4th floor rehearsal space, and FOH/Booth areas available for production use.
- Hard wired “show” internet at SR, SL, Video control & FOH mix position. Network jump cables have been run from the SR connection to a secondary location SR plus the extension room behind stage.

Note: *WIFI Upload / Download speed is normally 80Mbps (6G). Wired internet speed is normally 100 Mbps*

POWER

Temporary Power – Lighting / Video / General:

STAGE RIGHT:

- 1x 400 amps 3 Ø 120/208V 60 cycles - Crouse-Hinds Posi-Lok connectors with adapters to type J Cam-Lock
- 1x 200 amps 3 Ø 120/208V 60 cycles - Crouse-Hinds Posi-Lok connectors with adapters to type J Cam-Lock
- 1x 100 amps 3 Ø 120/208V 60 cycles - Type J Cam-Lok tails
- 1x 60 amps 3 Ø 120/208V 60 cycles - Panel attached to break out to 15A Duplex plugs
- 1x 30 amps 3 Ø 120/208V 60 cycles - Tails tie-in plus 1x L14-30 and 1x L21-30 outlets

NOTE: THESE SERVICES ARE SHARED WITH THE 800 AMP HOUSE LIGHTING DIMMERS. IF NEEDING FULL SERVICE, HOUSE SYSTEM CANNOT BE USED.)

STAGE RIGHT U.S. IN EXTENSION:

- 1x 400 amps 3 Ø 120/208V 60 cycles – Service shared / Tie in Required. Pre-approval required.

NOTE: THIS SERVICE ALSO POWERS THE FREIGHT ELEVATOR AND STAGE MOTOR DISTRO. UTILIZING THIS 400A WILL MEAN THE LOSS OF THESE PIECES OF EQUIPMENT. THEREFORE, ONLY UNDER VERY SPECIFIC CIRCUMSTANCES WOULD CONNECTING TO THIS SERVICE BE APPROVED.

STAGE LEFT IN AUDIO ROOM:

- 1x 100 amps 3 Ø 120/208V 60 cycles - Type J CAM-Lok tails. (Not on technical ground)
- 1x 60 amps 3 Ø 120/208V 60 cycles - Currently not connected
- 1x 40 amps 3 Ø 120/208V 60 cycles - Tails tie in plus 50A 14-50 stove plug outlet
- 1x 30 amps 3 Ø 120/208V 60 cycles - Tails tie in plus 1x L21-30 twist outlet

Note: there is a cable pull access hole located here that allows cable to be sent outside to the street

BALCONY RAIL:

- 1x 30 amps 3 Ø 120/208V 60 cycles - L21-30 located center behind seats Row 4. (Branched L14-30 1 Ø 120/208V outlet located beside Row 1 seat, balcony center (for projector requirements). (Both linked with outlet in Spot Booth).

FOLLOWSPOT BOOTH:

- 2x 30 amps 1 Ø 120V 60 cycles – L6-30 twist outlet
- 2x 30 amps 1 Ø 120/208V 60 cycles – L14-30 twist outlet (2x L14-30 to L6-30 adapters for followspots)
- 1x 30 amps 3 Ø 120/208V 60 cycles – L21-30 twist outlet. (Linked with outlet at Balcony Rail)

4TH FLOOR REHEARSAL ROOM:

- 1x 30 amps 3 Ø 120/208V 60 cycles - 1x L21-30 twist outlet

LOBBY:

- 1x 200 amps 3 Ø 120/208V 60 cycles - Crouse-Hinds Posi-Lok connectors with adapters to type J Cam-Lok (Located in basement electrical vault)
- Various 3 Ø and 1 Ø plugs throughout lobby. Types include L14-30 twist, L21-20 twist, L21-30 twist.

BUS SHORE POWER:

- 3x 50-amp stove plug on side walk pedestal.

Note: permit required for parking, please see parking section above

Temporary Power – Audio (Isolated Ground – This power is in addition to the above)

STAGE LEFT OR RIGHT:

- 1 X 200 amps 3 Ø 120/208V 60 cycles Stage Left or Right via transfer switch. Technical ground – (Type J Cam-Lok)

NOTE: THIS 200A SERVICE IS SHARED WITH THE POWER FOR HOUSE AUDIO AND OUTLETS ON TECHNICAL GROUND. IF NEEDING FULL SERVICE, HOUSE SYSTEM CANNOT BE USED.

ONSTAGE:

- 4x 30 amps 1 Ø 120/208V 60 cycles L14-30 on Technical Ground. Located DSL, DSR, USL and USR

ROAD FOH MIX POSITION:

- 2x 30 amps 1 Ø 120/208V 60 cycles L14-30 on Technical Ground. Located back of Main Floor

BALCONY RAIL – HOUSE RIGHT:

- 1x 30 amps 1 Ø 120/208V 60 cycles L14-30 on Technical Ground

FOLLOWSPOT BOOTH:

- 2x 30 amps 1 Ø 120/208V 60 cycles L14-30 on Technical Ground

LIGHTING

Note: A detailed Lighting Plot, Paperwork and Magic Sheets are available upon request in Pdf. We can also provide CAD files in VectorWorks (.vwx) and paperwork in Lightwright (.lw6). Please always check the actual Lighting Plot download file on the website for the most up-to-date info

Lighting Consoles:

ETC ION with:

- Full tracking back-up (Secondary EOS ION)
- One 2 x 20 sub-master wing
- No designer remote video station available
- Full function tablet remote (RFR) or use of the app on a phone
- 6144 channels / 6144 outputs

ETC Paradigm:

- Separate, house-light/work-light control. Control of houselights is normally not given to Road Shows. Furthermore, when audience are moving around (pre-show/intermission/post-show), houselights must be at the venue's set 100%

Dimmers/Circuits:

2.4 Kw – twist-lock (L5-20)

- 192x AVAB Stage and House Light Dimmers
- 48x ETC Sensor Dimmers for added House Lights

Control:

DMX - There are patchable DMX dry lines located at:

- 4x Front of House Mix Position
- 3x House Lighting Booth

ETC Gateway / Cat5e/6 Network:

- All FOH / Balcony Rail lighting / Stage Left positions, and all dimmer racks are/can be connected using an ETC DMX Gateway network plus Cat 5e dry lines
- There are 4x cat5e/6 dry lines at FOH Mix Position to Stage Right.
- There are 3x cat5e/6 dry lines at Stage Right to the Lighting Booth
- Onstage DMX/CAT5e rack and Net3 node located offstage right for road show tie-in.
- In Basement with Dimmers is main DMX/CAT5e control rack with a Net3 Conductor
- Entire system can be connected to a console via sACN

Permanently Installed Positions:

FOLLOWSPOT BOOTH:

- 2x – Lycian 1295 – ELT 3kw Xenon Spots
- 2x – Lycian 1290 – XLT 2kw Xenon Spots

FAR FOH DOME:

- 4x - 10° ETC Source 4 @ 750 watts: 12" x 12" (30.05 cm x 30.05 cm) colour frame (with available drop in iris kit)
- 8x - 5° ETC Source 4 @ 750 watts: 14" x 14" (35.05 cm x 35.05 cm) colour frame (with available drop in iris kit)

FOH SLOTS:

- 2x - 19° ETC Source 4 @ 750 watts: 6 ½" x 6 ½" (16 cm x 16 cm) colour frame (each side)
- 4x - 26° ETC Source 4 @ 750 watts: 6 ½" x 6 ½" (16 cm x 16 cm) colour frame (each side)

BALCONY RAIL:

- 6x - 26° White ETC Source 4 @ 750 watts: 6 ½" x 6 ½" (16 cm x 16 cm) colour frame
- 2x - 36° White ETC Source 4 @ 750 watts: 6 ½" x 6 ½" (16 cm x 16 cm) colour frame
- 2x - 50° White ETC Source 4 @ 750 watts: 6 ½" x 6 ½" (16 cm x 16 cm) colour frame
- 2x - 19° White ETC Source 4 @ 750 watts: 6 ½" x 6 ½" (16 cm x 16 cm) colour frame
- 4x - White ETC Desire D60X LED par (to light architecture)

ONSTAGE 1ST PROSCENIUM SIDE BOOMS:

- 6x - ETC Source 4 Par WIDE @ 750X watts: 7 ½" x 7 ½" (19.05 cm x 19.05 cm) colour frame (each side)
- 6x - ETC Source 4 Par MEDIUM @ 750X watts: 7 ½" x 7 ½" (19.05 cm x 19.05 cm) colour frame (each side)
- 1x - 36° ETC Source 4 @ 750X watts: 6 ½" x 6 ½" (16 cm x 16 cm) colour frame (each side)
- 3x - 26° ETC Source 4 @ 750X watts: 6 ½" x 6 ½" (16 cm x 16 cm) colour frame (each side)
- 1x - Source 4WRD MKII LED Extra wide Par (each side – used as work light only)

ONSTAGE 2ND PROSCENIUM SIDE BOOMS:

- 6x - ETC Source 4 Par WIDE @ 750X watts: 7 ½" x 7 ½" (19.05 cm x 19.05 cm) colour frame (each side)
- 6x - ETC Source 4 Par MEDIUM @ 750X watts: 7 ½" x 7 ½" (19.05 cm x 19.05 cm) colour frame (each side)
- 2x - 36° ETC Source 4 @ 750X watts: 6 ½" x 6 ½" (16 cm x 16 cm) colour frame (each side)
- 1x - ETC Desire D60X LED par (each side to light architecture)
- 1x - Source 4WRD MKII LED Extra Wide Par (each side - used as work light only)

Note: there is an extra 36° fixture SR to be used as a special

ONSTAGE OVERHEAD / PROSCENIUM SPECIALS & EXTRAS:

- 9x - 36° ETC White Source 4WRD MKII LED 7 ½" x 7 ½" (19.05 cm x 19.05 cm) colour frame (for thrust stage)
- 4x - 19° ETC Source 4 @ 750X watts: 6 ½" x 6 ½" (16 cm x 16 cm) colour frame
- 2x - 26° ETC Source 4 @ 750X watts: 6 ½" x 6 ½" (16 cm x 16 cm) colour frame
- 2x - 19° ETC Source 4 Daylight HD Series 2 LED with I-Cue mirrors and DMX Iris units
- 41x - ETC Desire D60X LED par (top and BAX stage wash)
- 9x - ETC Desire D40 LED par (Far US top stage wash)
- 4x - Osram Kreios FLx 90 LED Flood Lights (used as work lights only)

UPSTAGE OVERHEAD BAX SPECIALS:

- 2x - 19° ETC Source 4 @ 750X watts: 6 ½" x 6 ½" (16 cm x 16 cm) colour frame
- 2x - 26° ETC Source 4 @ 750X watts: 6 ½" x 6 ½" (16 cm x 16 cm) colour frame

SHELL COVES:

- 9x - ETC Selador LED VIVID R21 strips (in shell coves)
- 8x - ProCan MR16 LED 6w mini par (for column up-lights, between coves)

Notes: all of the above lamps in all positions are 3200 degrees K. colour temperature, with the exception of LED units.

Unused Equipment Totals:

- 12x – ProCan MR16 LED 6w Mini Par
- 6x - ETC Source 4 pars @ 750X watts: 7 ½" x 7 ½" (19.05 cm x 19.05 cm) colour frame
 - A selection of lenses are available
- 2x White 10° ETC Source 4 barrels
- 2x White 14° ETC Source 4 barrels
- 1x White 19° ETC Source 4 barrels
- 2x White 26° ETC Source 4 barrels
- 2x White 36° ETC Source 4 barrels
- A few black 19°, 26°, 36°, 50° barrels available

Miscellaneous Gear:

- 12x – ProCan MR16 LED 6w Mini Par
- 4x – Double Gobo Rotators
- Template Holders
 - 16x “A” size for Source 4
 - 30x “B” size for Source 4
 - 2x 86mm Universal Glass Holder for Source 4
- Floor Bases: 6x Christie Lites style floor bases
- 2x Silver Avenger Stands with T-Pipes
- 18x Iris Kits for ETC Source 4
- 9x Littlites
- 16x Double Swival Clamps

Stand Lights:

- 40x - Manhasset 40w Halogen Stand Lights
- 4x - Stand Light power snakes with quad boxes
- 8x – Might Bright LED battery stand light

Lobby – West Coast Hall:

- 6x - Elation Opti LED Tri Pars (fixed for lobby events via Echo lobby control)

Note: the areas around the West Coast Hall are on an ETC Echo Dimmer system. This area is the only section of the lobby that is dimmable for lobby events.

Notes:

- All stage circuit connectors are 20-amp twist-lock (L5-20)
- The venue stocks a few different barrels for the S4 Lekos and lenses for the Source 4 Pars. See paperwork for inventory
- A sufficient amount of single and multi-cable for use with theatre equipment stock is available. Adding equipment may require additional cable. We can adapt some L5-20 twist-lock or 5-15 U-Ground.
- A reasonable amount of 5-pin DMX and 4-pin scroller cable. Adding equipment may require additional cable.
- While we stock a good inventory of commonly used Rosco and Lee gel colours, we do not promise to have any particular colours that may be needed for your production
- We have a small selection of Gobos in A & B sizes
- Please always check the latest Lightwright paperwork for the most up-to-date equipment totals and info
- Down Lights - The entire stage area within the shell can be illuminated by the permanently focused ETC Desire D60X & D40 LED par units US of the proscenium plus the 9x White Source 4WRD 36º units DS of the proscenium. This light reaches a level of approximately 200 foot-candles - 3400 degrees K. This wash is designed for and used by musicians to read music, but besides white light the LED pars can produce any desired colour. (These fixtures are normally not re-focusable).

Followspot Booth:

- The Spot Booth is located above the back of the upper balcony. It is accessed via stairwells from the lobby on Level 4
- Spot Booth dimensions are 33' long x 14' deep
- The booth has clear-com, program sound, spot chairs, and a bathroom. The glass window covers almost the entire length of the booth with only small seams in the glass
- Spot Booth currently utilizes 2x - Lycian 1295 - ELT 3Kw Xenon Follow Spots and 2x Lycian 1290 – XLT 2Kw Xenon Spots. Wheels are attached you mounts



Lighting Booth:

- The Lighting Booth is located at the back of the balcony just behind the last row of seats. Booth is accessed from level 4 in the lobby, house left.
- If people stand



AUDIO

House Sound System:

- Main flown Left/Right system is comprised of 12x d&b V-series Speakers (8xV8 & 4xV12) per side
- 4x d&b V4 subs flown as a centre cluster and 6x d&b Y V subs on the ground. 2x added subs available by request if not using as stage side fills
- The whole system is run in Array Processing and uses all d&b D80 amplifiers. d&b R1 and Array Cal files available upon request to integrate with additional speakers as needed.
- The main Left/Right system is hung by 3x inverted Tour Rig direct control 1-ton motors per side. The centre sub cluster is hung using 2x winch motors.
- Patching facilities exist to allow control of this system through touring mixer. PA system can be fed Analog (Left, Right, sub, Front Fill) or AES Digital (Left + Right) (Subs + Front Fill) signals.

Front Fill Lip System:

- 8x d&b E8 speakers powered by a d&b 30D amplifier

Proscenium Fill Speakers:

- 1 x d&b Vi10P speaker on each side of proscenium wall powered by a d&b 30D amplifier - Feed by Front Fill Signal

Under Balcony System:

- Row 1 consists of: 11x d&b Ti10L speakers powered by a d&b D80 amplifier
- Row 2 consists of: 10x d&b E8 speakers powered by a d&b D80 amplifier

Note: under balcony speakers are fed a Mono sum of the Left and Right signal

Over Balcony System:

- 2x d&b Yi7P speakers flown and powered by a 30D amplifier - Fed from the Left and Right feeds

Hearing Assist:

- Listen Tech (LCS-121-01) Wi-Fi/RF Advanced System. This system combines Wi-Fi and RF technologies to give compliant audio coverage PLUS expanded coverage to everyone with a smartphone or tablet.
- 40x Listen Tech Receivers (72 MHz) with universal ear speaker plus neck loop.

Touring Mix Location - Centre Orchestra:

- Orchestra level, Right Centre, the full audio mix / lighting position utilizes, Row 29 seats 41-53 (inclusive) and Row 30 seats 41-54 (inclusive) removed, plus Row 31 seats 41-53 (inclusive) which can either be just not sold or removed.
- Audio connection via Cat6 (except Dante), AES or analog XLR to House system available at this location
- 2x 30amp L14-30 plugs available for AC power. Can also be broken out to 4x 15amp Edison duplex plugs
- Clearcom is also available at FOH
- Snake traverses from down stage left in front of the stage to mix location via a 110' long x 8" diameter pipe. Requires 125' of cable to reach from the standard stage left monitor desk location to FOH mix.

Note: production is not permitted to use any space that is designated for mobility seating

Note: THESE SEATS MUST BE HELD FROM SALE IN ADVANCE SO THEY CAN BE REMOVED FOR YOUR EVENT (IF REQUIRED)



Touring PA Positions:

- 1x 1-ton point SL & SR 10'-10" US from the center DS edge of the deck. These are normally used as Road Audio points.
- The house array with their 3 points lives just offstage of these points and can be raised out of the way

Portable & Monitor Speakers:

- 10x d&b M4 wedge monitors & 1 d&b V-Sub
- 2x d&b Y7P speakers & 2x d&b V-Subs (with post attachments) for portable side-fills
- 4x d&b Yi7P speakers hung on Stage Left and Right (just upstage of both sets of pillars) are permanent side-fills
- The system is all powered with d&b D20 amplifiers and is setup to do 8x wedge mixes, a sub/top drum fill, 2x sub/top side-fills. The permanent side-fills are setup as 2 stereo mixes. The default configuration is 1x single stereo mix left and right, but we can split upstage and downstage as needed

FOH House Mixing Console:

- Avid S6L 24C control surface with 112 Engine in the sound booth. Please note that this console does not leave the sound booth. (Local I/O: 8 analog inputs, 8 analog outputs, 8 AES inputs, 8 AES outputs)
- There is an additional Avid S6L 24C control surface that is available upon request and can be used at the FOH mix position. (Local I/O: 8 analog inputs, 8 analog outputs, 8 AES inputs, 8 AES outputs)
- The 112 Engine in the sound booth is installed with a Waves Soundgrid server one. This can be used by any house console when setup in the mix position and using the booth 112 Engine (Available Plugins: API 560, Waves C6, DBX 160, F6, H-EQ, H-Reverb, Waves Horizon Bundle, PSE, SSL 4000 Collection)

Monitor House Mixing Console:

- Avid S6L 32D control surface with 112 Engine (Local I/O: 8 analog inputs, 8 analog outputs, 8 AES inputs, 8 AES outputs)

Audio Console Preamps:

- 1X Avid Stage 64 (64 analog input / 24 analog output) located stage left installed
- 1X Avid Stage 32 (8 analog inputs, 8 analog outputs, 16 Dante outputs) located in the audio booth (4th floor)
- 4X Avid Stage 16 (16 analog inputs, 8 analog outputs, 4 AES digital outputs) available with advanced notice

Networking:

- They System is connected via a fibre optic redundant network using Luminex Gigacore 10 switches running an AVB network for the Avid consoles and a control network for system control and Dante audio distribution

Patching

- The hub of the system is all stage left where there is an Avid Stage 64 that is connected to the booth via 2x Luminex Gigacore 10 redundant switches using Fibre Optic cable.
- There are patchable XLR tie-lines originating from and going to: Stage right, Upstage Right, Upstage Left, the Video Room, RF rack, Amplifier rack and the Sound Booth.
- There are CAT6 tie-lines originating from and going to: FOH Mix position, Stage Right and the Sound Booth
- There are NL4 tie lines going to: Stage Right, Upstage Right and Upstage Left

CD Player:

- 1x Tascam CD-01U

Signal Processing:

- The system is controlled using 2 x Lake LM44 processors which feed 3 x d&b DS10 processors that split the signal from Dante to AES. The Lake processors are available to touring groups via a Windows surface Pro 4 tablet.

Paging & Program:

- Complete program interrupt system to lobbies, dressing rooms, rehearsal rooms, wardrobe room, hallways etc. from stage manager station down stage right.

Intercom:

- One (1) Channel Clear-com to all operating stations with the master station at stage manager's location (down stage right).
- Portable stations are available.

Microphones / DI's:

• DPA 4052	4 (Hanging Omni Microphones)
• DPA 4099	2 (including all available clips as well as wireless adaptor for Shure transmitter)
• AKG C414E	4 (Condenser Microphones)
• AKG 414XLS	1
• Shure SM58	6
• Shure SM57	6
• Shure Beta 57	2
• Shure BETA 58	4
• Neumann KMS 105	3
• Neumann KM 143	5
• Neumann KM 183	4
• Neumann KM 184	10
• Neumann KM 185	2
• Audio Technica Pro 37	4
• Earthworks -FMR500	2 (Lectern Mics)
• Sennheiser E901	1
• Sennheiser E902	1
• Sennheiser E904	4
• Sennheiser E914	2
• Sennheiser E609	1 + 1 on order
• Sennheiser MD421	4

- DI boxes:
 - Radial J48 6 (active)
 - Radial JDI 2 (passive)
 - Cable Factory DI-Pro 3 (passive)

Stage Wireless Mics:

- 2x Shure Axient AD4Q Quad Receivers (8 channels total) (470-616MHZ)
- 2x RF Venue Diversity Fin Antennas (470 – 698MHZ)
- 8x Shure AD2 Handheld Transmitters (470 – 616MHZ)
- 8x Shure KSM8 Capsules
- 6x Shure Beta 87 Capsules
- 2x Shure SM 58 Capsules
- 8x Shure AD1 Bodypack Transmitters (470-616MHZ)
- 2x Countryman H6 Headset mics with TA4F connectors, purple band (Tan)
- 2x Countryman H6 Headset mics with TA4F connectors, no band (Tan)
- 6x Countryman B3 Lav mics with TA4F connectors (Tan)
- 1x Countryman B3 Lav mic with TA4F connector (Tan)
- 8x Oscar Sound Technologies HM 701 Headset mics with TA4F connectors (Tan) – *These don't sound amazing*
- 2x Oscar Sound Technologies TL40 Lav mics with TA4F connectors (Tan) – *These don't sound amazing*
- 18x Shure SB900A Rechargeable batteries
- 2x Shure WA302 Instrument cables
- 1x Countryman E6 Headset mics with TA4F connectors, no band (Brown) – (check if available as it may be used at another venue)

FOH Wireless Mics & Speakers:

- 4x Shure ULXD4 Single Channel receiver 470 - 534 MHz
 - Main staircase speakers only (receives at coat check)
 - West Cost Hall 2x (system not operational)
 - President lounge (system not operational)
- 4x Shure Handheld ULXD2 / SM58 470-534MHz transmitters
 - Program speakers throughout the lobby with an announcement mic, CD player and Program sound sources available all driven by 70volt QSC amplifiers

Microphone Lines:

To Sound Booth 4th Floor:

- 8x Amp Rack to Audio Booth
- 4x Amp Rack to Audio Booth (AES cable)
- 4x Stage Left to Audio Booth (AES cable) – see note
- 4x Stage Right to Audio Booth (AES cable) – see note
- 8x FOH Mix to Audio Booth (AES cable) – see note
- 2x Projection Audio Booth to Audio Booth)
- 12x Balcony Rail to Audio Booth (4 used for house program mics)

Note: Both male and female with 8 signals total

To Stage Left:

- 12x Stage Right to Stage Left
- 12x Up Stage Right to Stage Left
- 12x Up Stage Left to Stage Left
- 2x Amp Rack to Stage Left (AES cable)
- 12x Video room to Stage Left (6 Male XLR, 6 Female XLR)
- 8x RF Rack to Stage Left

Note: all microphone lines and trunks terminate on stage to 3 pin XLR connectors Microphone

Cables & Stands:

- 4x Desk stands
- 7x Goosenecks
- 20x Tall mic stands with booms (K+M, ATLAS)
- 12x Short boom stands
- 4x 12 channel sub snakes (2x @ 50', 2x @ 75')

***Note:** assortment of stands, cables, splitter boxes, pre mixers, adapters, etc. availability subject to prior reservation.*

Pro Tools / Audio Recording Rig:

- Apple Mac-Mini with AVB connection to Avid Pro Tools from S6L console up to 64 tracks of independent recording.
- Additional recording via Mac Book Pro laptops available upon request.
- 2 Track recording vis USB onboard S6L console
- 1x -Tascam SS-CDR-200 CD/USB/SD Card recorder and audio playback

***Note:** recording media not provided*

Audio Booth:

- The Audio Booth is located at the back of the balcony just behind the last row of seats. Booth is accessed from level 4 in the lobby, house right.
- If people stand in their seats, the view through the booth window can be obstructed
- The glass window fully opens for mixing purposes.



VIDEO

In 2019, the Orpheum underwent significant upgrades to its video system, providing clients with an in-house solution for many of their video needs. Multi-camera video shoots for recording, streaming, projection, or broadcast are all now possible. Additionally, we have improved our signal distribution infrastructure, which allows us to send or receive video signals to and from virtually anywhere in the theatre. Please inquire if you have specific questions.

Note: There are added costs if using the video system. Please inquire for further information or if you have specific questions.

Note: while most parts of the system can do 4K, there still may be several concerns surrounding this format. Therefore, the venue will only confirm that we can run in Full HD.

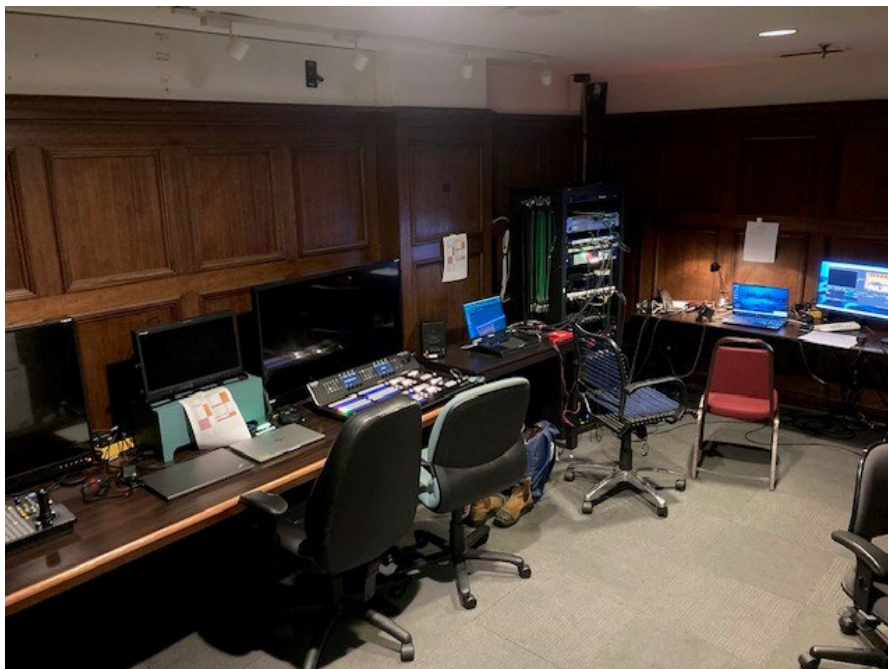
Cameras:

- 6x Blackmagic Design URSA Broadcast G2 (Permanently on robotic heads under the balcony and on the side booms)
- 1x Marshall CV506 Miniature Full-HD POV style camera (3G/ HDSDI & HDMI)
 - 1x Marshall CV - 0622-5MP 6.0-22mm M12 zoom lens
 - 1x Marshall CV – Prime Lens Pack (2.3mm, 2.8mm, 6.0mm, 8.0mm, 12.0mm & 16.0mm)
- 1x FOH program camera for lobby and backstage monitors
- 1x Panasonic AW-HN130KPC with NO controller, used as static camera upstage

Control Booth:

Video control is located one level below the stage (under the stage, on the stage left side)

- KXWell KT-RP8910 Robotic Head Controller with 20 easily accessed presets
- Blackmagic Design ATEM Constellation 8K switcher with 2M/E Advanced Panel
- 2x AJA KI-Pro Ultra Plus multi-channel HD recorder and player (up to 8 independent channels of recording)
- 2x Decimator MD-cross HDMI/SDI cross converters
- SDI broadcast monitors
- 2 x Macbook Pro Laptops (2019) for PPT, Keynote, QLab 4.7/5.3 (laptops shared with Audio – Recording)
- Livestream system, with AJA U-Tap video capture device, Focusrite Scarlett 2i2 audio interface, Lenovo Legion laptop computer, running Windows 10 and OBS.



Projectors:

- 2x Panasonic PTRZ 12K 3-chip laser projectors (12,000 lumen). These are permanently mounted FOH in the Stage Left and Stage Right side walls. They cross to the opposite side of the theatre to project on the proscenium side screens
- 2x Panasonic PTRZ 21K 3-chip laser projectors (20,000 lumen). These are typically hung on the balcony rail platform and co-converged onto our 32' x 18' projection screen (see below)
 - 2x Panasonic ET-D75LE10 Projector Zoom Lenses (1.3-1.67:1)
 - 2x Panasonic ET-D75LE20 Projector Zoom Lenses (1.67-2.41:1)

Note: Throw ratios are based on a 16:9 image

Projection Screen:

- 1x Stumpfl Variolok 64, 32' x 18' projector screen (16x9 aspect ratio). (The typical hanging position is from the Mid-Stage motors, using the house ladder truss. Projection is from the balcony rail. Front Projection surface only)
- 2x Da-lite 7.5' x 13.5' motorized screens – 1x each side (Located Stage Left and Stage Right of the Proscenium).

Note: the Da-Lite motorized screens normally remain hung, but rolled up. They can be fully removed if necessary. Please discuss in advance.



Side Screens



Main Screen

Surtitle Screen:

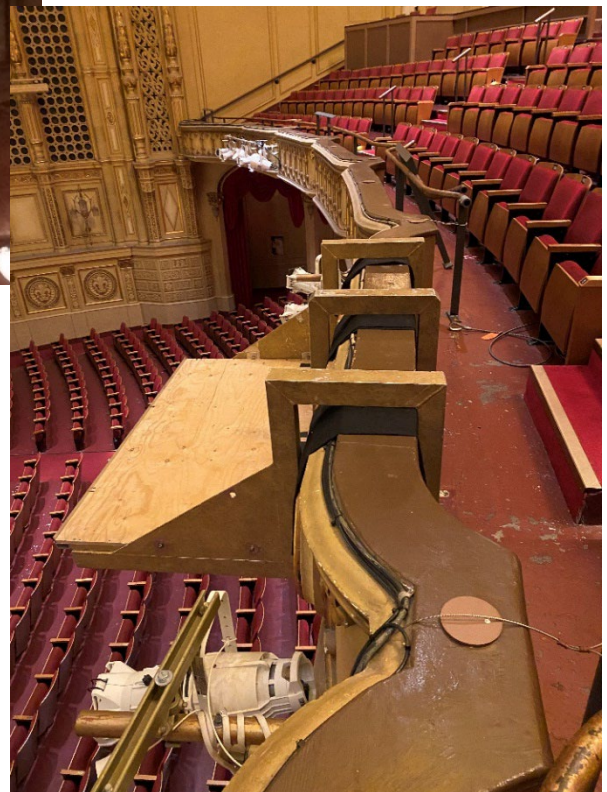
- The venue has 1x screen that normally lives in storage in the extension. When in use it gets hung on 3x 7' drifts from house truss. The bottom of the screen sits around 15'-7" above the deck with the truss fitting just under the sound shields. Any higher gets into sightline issues with the main floor. Much lower and the projectors have trouble adjusting.
- The distance from the lens to the screen is around 36'
- The white projection surface is 38"h x 240"w. The surround frame is 5" thick.

Miscellaneous Gear:

- 1x Decimator 12G-cross HDMI/SDI cross converters (in addition to 2x in control booth, 3x in total)
- 2x Blackmagic Design Micro Converter BiDirectional SDI/HDMI 3G, 1x Micro Converter SDI to HDMI 3G
- 2x AJA Hi-5 SDI to HDMI converters
- 1x 17", 1x 19", 1x 23", and 2x 32" monitors with stands – can be used as confidence monitors, conductor monitor, multi-view, etc.
- Dsan PerfectCue remote slide cuing system

Projection Balcony Rail Platform:

- The venue has a projector sled that mounts to the center of the Balcony Rail to hold 2x Projectors.
- There is a ¼ ton chain motor to aid with the lift of the platform and projectors



Lobby TV Video:

- If wishing to display content on the lobby TVs -
 - This system requires additional setup and the following format: QuickTime ProRes 422 LT 1920x1080 @ 29.97 fps.
 - The content will be scaled and displayed in standard definition via RF cable.

Archival Video Recording:

- If using the KiPro decks to make an archival recording it shall be understood that the recording will start 2-5 minutes before the beginning of the performance and record straight through to the end.
- Upon completion of the recording the footage will be transferred to the client's SSD. The required drive types are included with these tech specs further down.
- If clients do not wish to wait for the file transfer to complete, Head Video will drop the SSD or USB at stage door for pickup.
- If the client does not have a drive with them, we will hold on to the footage on our drives for 2 weeks. After this window of time has passed there is no guarantee the footage will be available.
- It is recommended that clients review the footage they receive ASAP in order to confirm the files have transferred correctly. The 2-week window that we will hold footage shall also apply.

VCT WIFI and LAN Connections:

COV-Business	WiFi
IP addressing	
Gateway	
DNS	
DHCP	
Upload	80 Mbps
Download	80 Mbps
Notes: Used for Licensee Access	

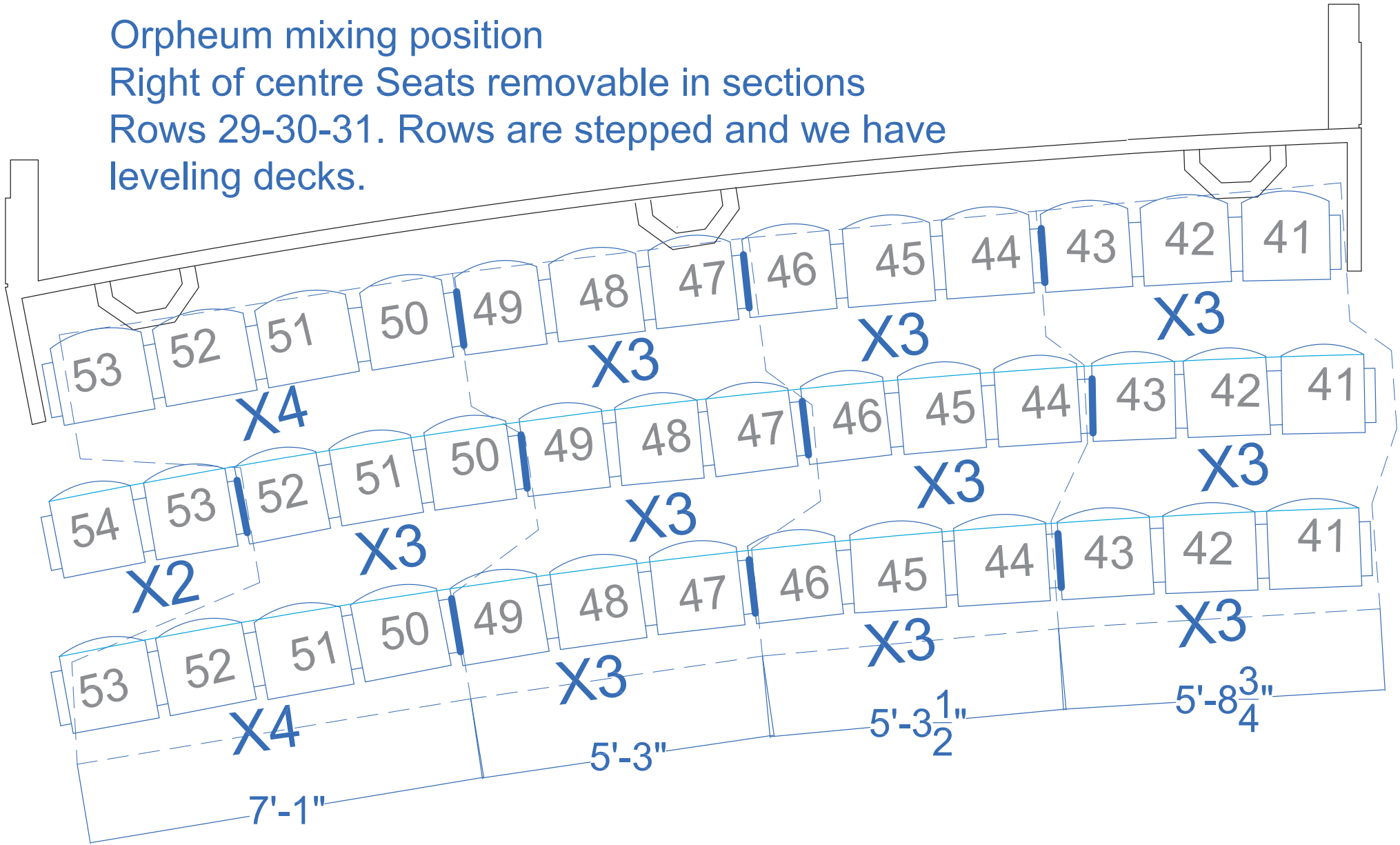
Van-WiFi	WiFi
IP addressing	
Gateway	
DNS	
DHCP	
Upload	10 Mbps
Download	10 Mbps
Notes: Used for Licensee Access	

Show Network	LAN
IP addressing	10.128.0.0 /9
Gateway	10.128.0.1
DNS	10.128.0.1
DHCP	Addressing Only
Bandwidth	100 Mbps
Notes: These ports give you a connection to our Public Internet connection. This network is NAT'd through a Firewall to Public IP addresses. The Firewall does allow all traffic outbound (no restrictions) The Public Internet connection is a 100 Meg fibre connection shared with the CoV-Public WiFi connections.	

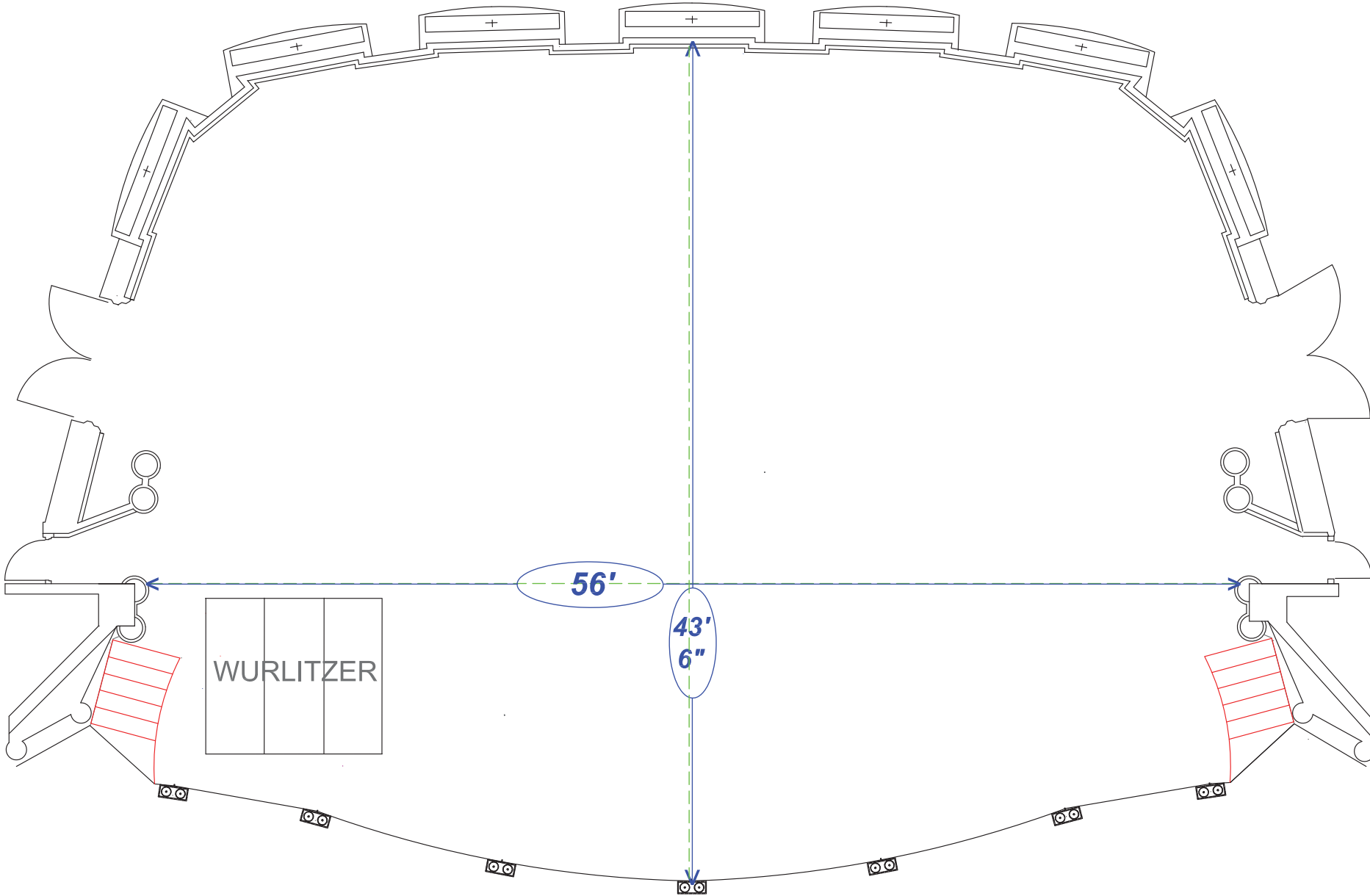
Orpheum mixing position

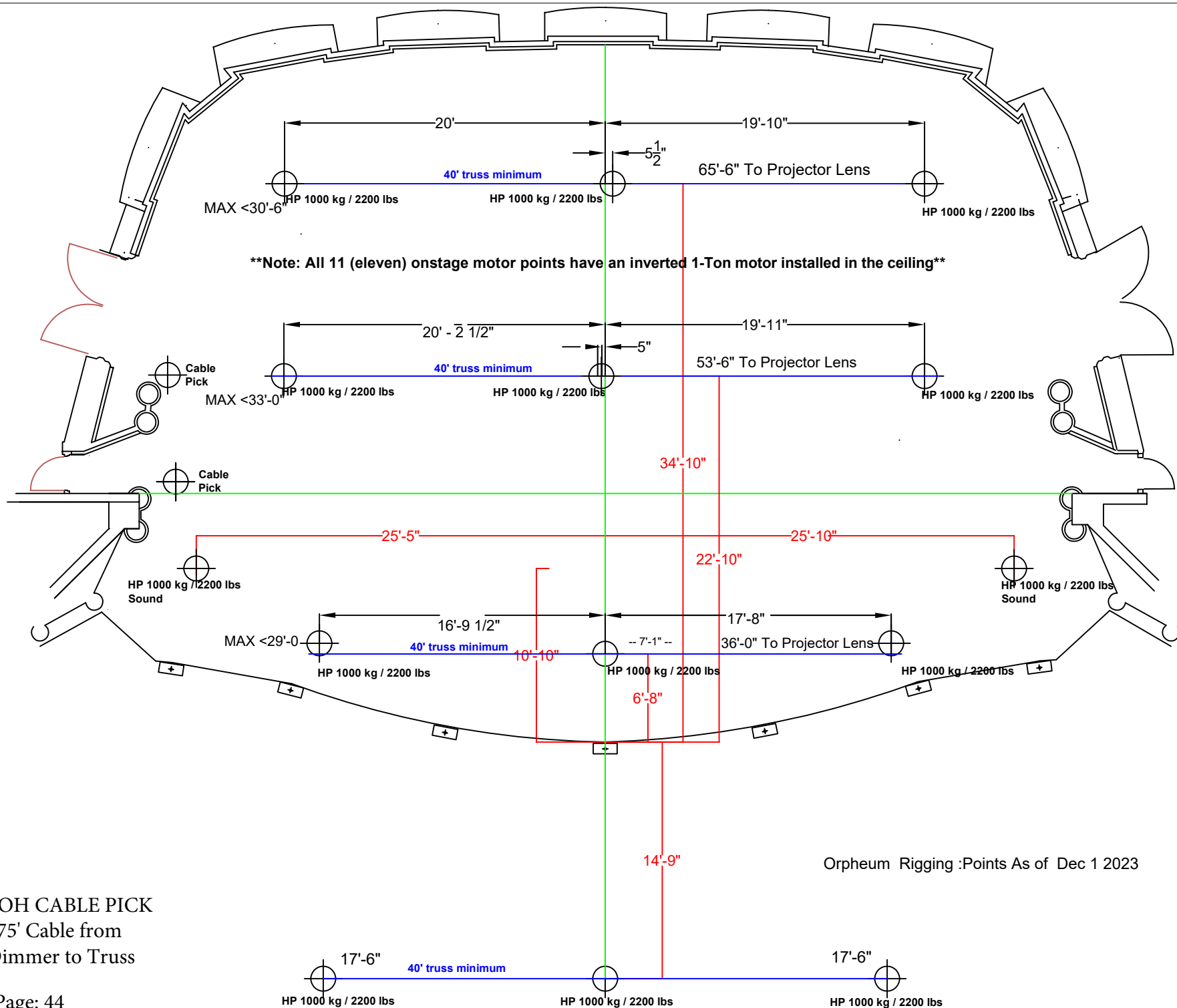
Right of centre Seats removable in sections

Rows 29-30-31. Rows are stepped and we have leveling decks.



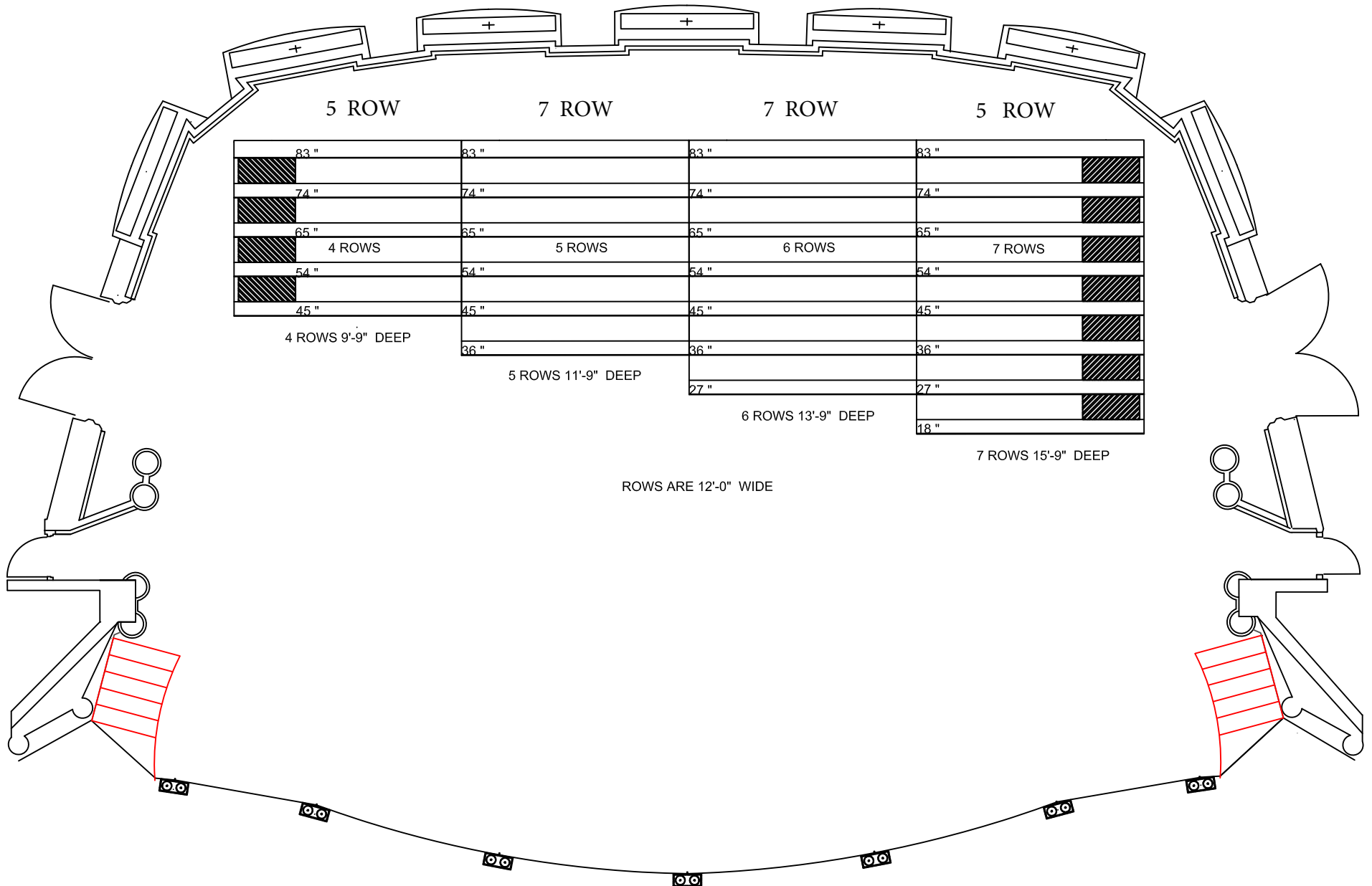
STAGE LEVEL



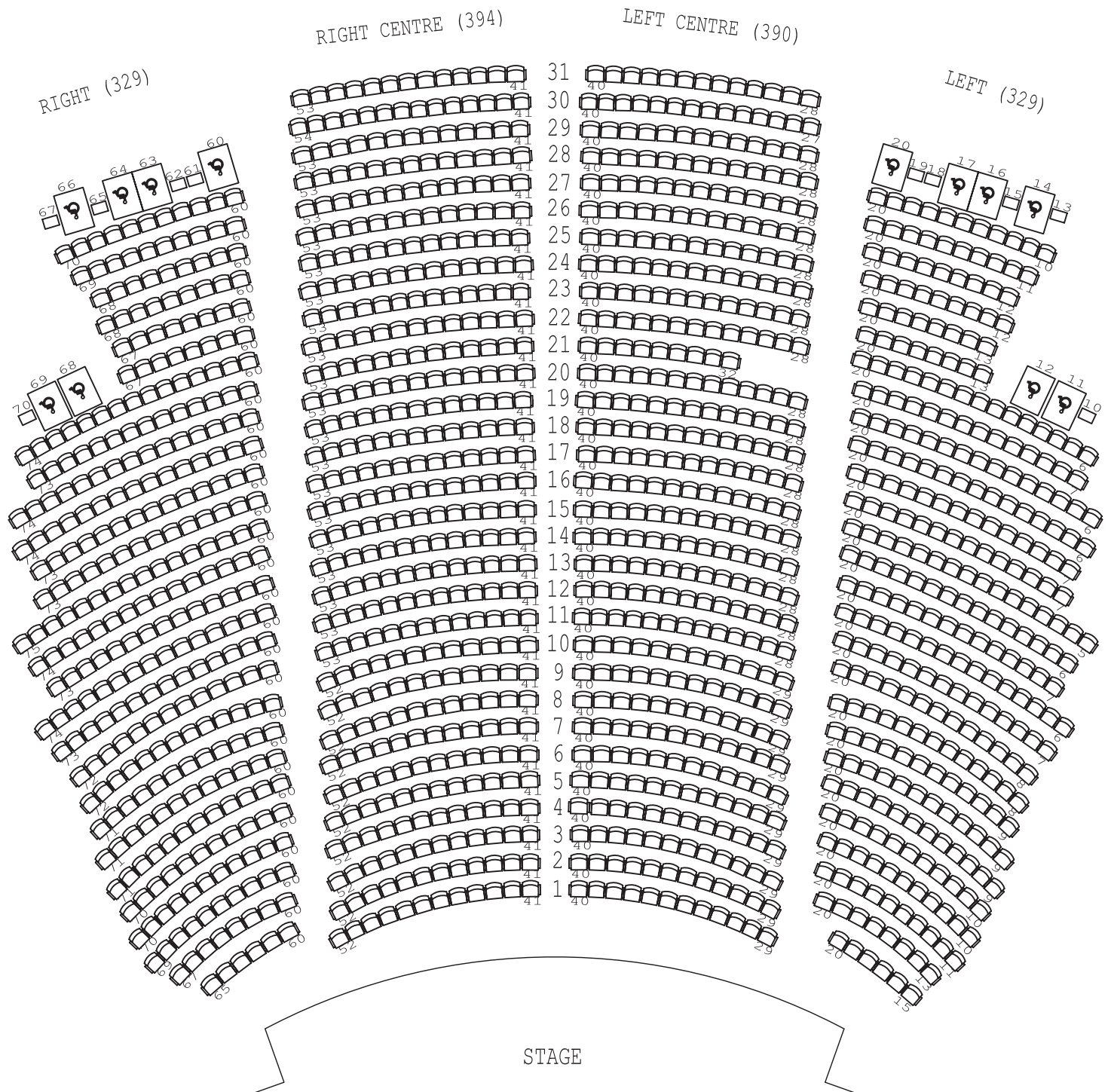


FOH CABLE PICK
175' Cable from
Dimmer to Truss

STAGE LEVEL



ORCHESTRA



UPPER BALCONY

