

Queen Elizabeth Theatre

Technical Specifications – September 2025

Address:

Vancouver Civic Theatres
649 Cambie St.
Vancouver B.C.
V6B 2P1
<http://vancouvercivictheatres.com/>

Seating Capacity: 2765

Stage Door: (604) 665-2193
Fax: (604) 665-3001

Stage Door / Loading Dock: Same as above
Main Theatre Audience Entrance: 630 Hamilton St.

Staff Contacts:

Paul McManus - Sr. Manager, Production	604-665-3024	paul.mcmanus@vancouver.ca
Brendan Keith - Technical Director	604-665-3043	brendan.keith@vancouver.ca
Scott Ellis - Head Stage Carpenter	604-665-2110	scott.ellis@vancouver.ca
General Booking Enquiries:		vctbooking@vancouver.ca

Loading Access:

- Loading Bays: One main angled bay for a 53' trailer & One bay at right angle for 40' (12.19m) trailer (if trailer is dropped). We can do a 53' trailer minus the cab when the road is closed. Portable extended loading dock can be built from secondary bay to make secondary angled dock. Requires setup crew
- Loading Doors: Two Roll up doors, 20' wide X 16' high (6.01m x 4.88m)
- Dock Height: 3'-5" (1.07m) high, above street level
- Access to Stage: Via two large 4' wide x 16' high (1.22m x 4.88m) doors, opening on to stage from loading dock
- Freight elevator: Load capacity 6,000lbs. 6'-4" w X 8'-8" d X 6'-11" h (1.93m X 2.64m X 2.11m) (To basement dressing rooms)
- Stacking: We have a 1-ton motor located upstage left near dock with spansets.

Parking Information:

On site parking: Refer to next page for diagrams and photos. [Trucks should arrive facing south along Cambie Street](#)

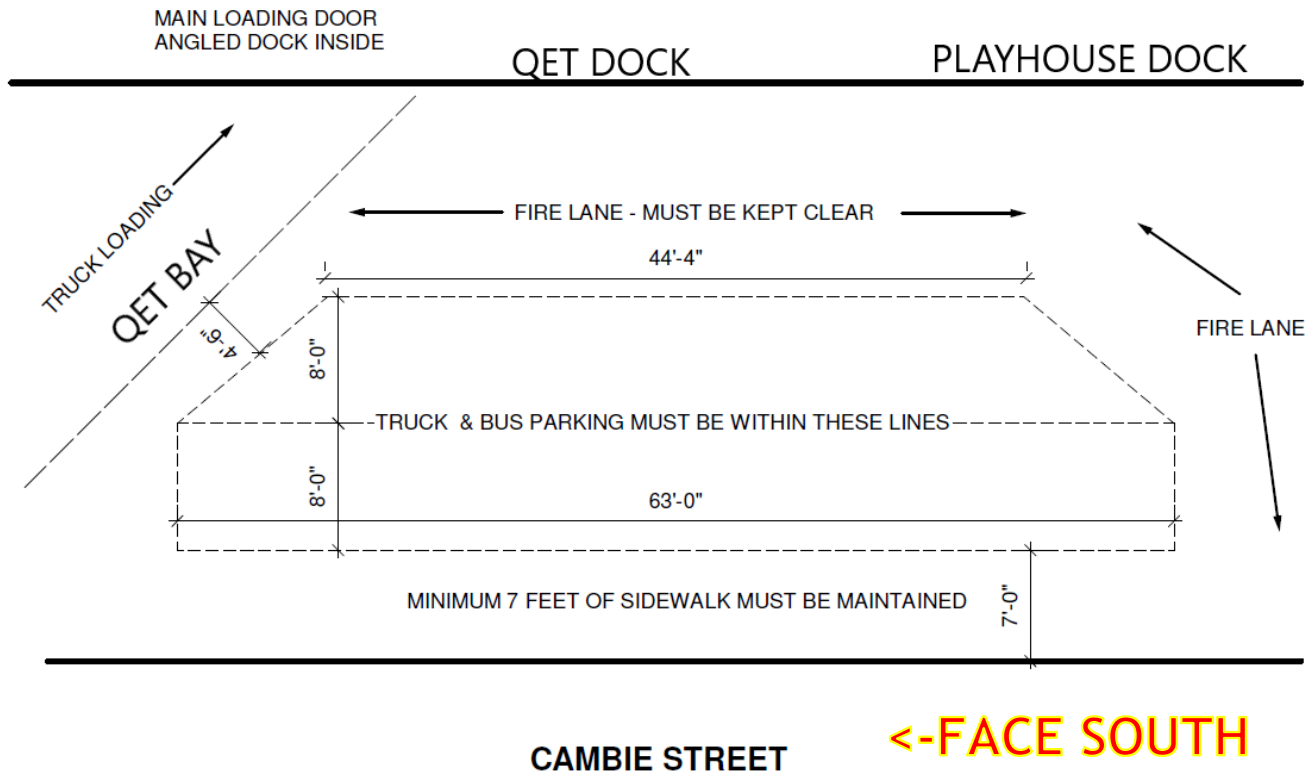
- We have space on the pad for Either: Two busses, One bus and One truck, or Two trucks (Please confirm with venue beforehand). Note: We have special authorization from Parking Enforcement for the section of parking that encroaches the sidewalk (see location of bus in photo). Underheight standard vehicles can never park in this section. Equally, if using this unique sidewalk space for a bus or truck, the sections marked "authorized parking" becomes restricted to only a bus or truck & must be used first. No standard vehicles are permitted in any of these spaces when the sidewalk parking is utilized.
- Shore power and water is available for busses. NO IDLING is permitted
- ***Trucks cannot remain in loading dock bay once unloaded***

**** Street parking is controlled by City of Vancouver. For street parking permit information, please visit the following links:**

[Information](#) about hosting events in Vancouver on public property – ie: streets and sidewalks. City is required to review/process any work requests for on street production parking.

Web form for [inquiries](#) to Film and Special Event office. Note: They deal with activity on COV streets and sidewalks only.

QUEEN ELIZABETH THEATRE: BUS AND TRUCK PARKING



Traffic Plan:

- The Civic Theatres has a Traffic Control Plan requiring flaggers and possible road closures when it comes to the movement of trucks in and out of the loading docks. The size of the plan and cost varies depending on the number of trucks and day.

USE OF HAZARDOUS MATERIALS IN THE VANCOUVER CIVIC THEATRES

Government of Canada legislation requires that the use of "controlled" products in our theatres shall comply with the rules under WHMIS (Workplace Hazardous Materials Information System). Controlled products include:

- (1) Compressed Gas (small CO2 tank storage space available)
- (2) Flammable and Combustible Material
- (3) Oxidizing Material
- (4) Poisonous and Infectious Material
- (5) Corrosive Material
- (6) Dangerously Reactive Material

WHMIS regulations require that:

- (a) Anyone using controlled products in the workplace must be informed as to its safe storage, handling, use, and disposal.
- (b) All containers of controlled products must have warning labels attached that meet regulation requirements.
- (c) A MSDS (Material Safety Data Sheet) for any controlled product must be available and be maintained in the immediate work area.

Some substances such as explosives, radioactive materials, and tobacco are covered under separate regulations. The use of propane powered devices and the storage of propane tanks within the theatre premises is not permitted

Smoking and/or Vaping in our venues is strictly prohibited under our Civic Bylaws. This includes outside the venue within 20 feet (6 meters) of any doorway, window, loading bay, and/or air intake.

Flame / Pyro:

Use of any product or device that involves flame shall need to be discussed and approved by the Civic Theatres in advance. The proper approval / permits by the Licensee from the Vancouver Fire & Rescue Services shall also be required.

Firearms:

Use of any firearms shall need to be discussed and approved in advance by the Civic Theatres. All proper permits, licenses, storage/handling procedures will be required by the Licensee.

Haze and Fog:

Haze and Fog are permitted to be used onstage. However, the fire system must be set to bypass particulate sensors. Therefore, please check with the venue before energizing any of this type of FX equipment.

DELIVERIES IN ADVANCE

Due to limited space, the venue can only accept merch shipments and/or large stage deliveries on a day your event is in the venue (unless special permission has been arranged in advance with the venue). Should deliveries arrive without prior approval, they will likely be rejected/refused.

GLITTER / CONFETTI / STREAMERS

Glitter is no longer permitted in the venue. When it comes to Confetti and/or Streamers, only paper products may be approved. We can no longer accept Mylar as it is a single use plastic product. Please note: Confetti and/or Streamers require advanced venue approval prior to event. If approved, there will be a cleaning fee charged for their use.

ROOM CAPACITY & BASEMENT LIMITS

Each room in the venue has a capacity limit that needs to be followed. To comply with our evac procedures, large groups of people (over 20) total in the lower level may require a dedicated crew person assigned to the location. If the number of people exceeds (100), this may also trigger added security.

BACKSTAGE CATERING

The VCT will be implementing Authorized Caterers for both FOH and Backstage. Once this begins, productions will no longer be able to contract their own companies not on the list to provide food. This will not apply to artist hospitality or simple things such as pizzas or sandwich platters. Please check with the venue during your advance to determine current requirements.

COOKING

The VCT does not permit physical cooking in the venue that would normally require proper venting. This includes but is not limited to” stovetops, ovens, burners, woks, and/or deep fryers. Warming pots for soup and chafing dish fuel are acceptable. Please check with the venue in advance if you have any questions.

PLAYING MUSIC FILES

The VCT can directly play songs/tracks that are provided on USB, or as files emailed to the technical department. Due to licensing, we are not able to take things such as Spotify playlists and play them from our equipment. Should you need to play tracks from a playlist, the production will need to provide the playback device (such as a laptop or tablet).

HOUSE HARLEQUIN DANCE FLOOR

To avoid the risk of potential damage If utilizing the house dance floor, it shall be understood that no sharp objects or tap dancing should take place on the surface. If you have any concerns, please discuss in advance.

STAGE SPECIFIC SAFETY REQUIREMENTS

- Steel Toed shoes are required if Car Loading. In any other situation they are recommended.
- Hard Hats are required by anyone who is on deck when Riggers are overhead or if working at the bottom of a lift.
- All Riggers / Flys must wear radio chest harnesses when working overhead. Attaching a radio (other than in the approved harness) is not permitted.
- If rigging / working overhead, all pockets must be empty of any loose items.
- Harnesses and Lifelines need to be used as required by the venue, based on the work. Locations are indicated by visible lifelines and/or anchors.

LOADING DOCK



STAGE INFO

Stage Floor:

- Maple, stained dark brown, with flex subfloor in performing area 70' wide X 40' deep (21.34m X 12.19m)
- No stage traps or elevators with the exception of the standard orchestra pit, which has 5 hydraulic sections operated independently, but not in unison
- Screwing and drilling into the floor is permitted, subject to approval. There may be a charge to repair holes in the floor.

Stage Dimensions:

• Proscenium opening (fixed):	68.29'w X 31.68'h (20.81m X 9.65m)
• Proscenium line to rear wall:	64' (17.51m)
• Proscenium line to orchestra pit:	2'-6" (0.762m)
• Proscenium line to front of apron (raised pit):	16' (4.87m)
• Center Stage to SL wall:	60' (18.29m)
• Center Stage to SR wall:	60' (18.29m)
• Free height SR wing space:	35' (10.67m) at underside of fly rail
• Free height SL wing space:	35' (10.67m) at underside of pin rail
• Height from stage floor to grid:	80' (24.38m)
• Stage height from front row of audience:	47" (1.19m)
• Distance from proscenium to booth:	115' (35.05m)
• Distance from proscenium to balcony rail:	85' (25.9m)
• Distance from spot boot to proscenium	116' (35.35m)
• Cable run from stage to FOH mix position:	140' through tube (SL only) or 180' along wall
• Distance from situation rooms to IMAG positions	113' (maximum screen size is 9' x 16')

NOTE: Clearance for fire curtain must be maintained at all times

Fly System:

- Maximum flying height of non electric pipes: 72' (21.95m) – Electrics pipes stripped of cables are also the same limit
- 74x single purchase line sets, plus 2 double purchahse linesets for side stage lighting ladders
- Lighting ladder tracks run up and down stage 43' (13.11m) SL and SR
- Pipe batten length: 80' (24.38m) comprised of bolted sections: 3 X 21' and 1 X 17', (There can be 4' extensions on ends)
- Pipe Type: Schedule 80 - 1 ½" (38 mm) nominal diameter, 1.9" (48 mm) outside diameter - Pipe capacity: 1,408 pounds
- Total amount of counterwieghts: 70,000 pounds (3,095 pcs @ 21.54 lbs and 330 pcs @ 10.77 lbs)
- Fly gallery operating position: 35' (10.67m) above stage, SR / Pin rail operating position: 35' (10.67m) above stage, SL
- The grid is is C Channel style. Motor points needing to be true center will need to be a bridal
- Spot line sets: approximately 50
- One (1) Trolley Beam with 2x 1-Ton Chain Motors to be used as an Arbour Motor Assist

FOH Rigging Points (Installed):

- 1 ton points, 7'-6" DS of proscenium line (through eyebrow slots) - Spacing at: Center, 2'-8", 12'-8", 17'-6", 22'-8"
- There are high steel roof beams located between each catwalk that can be used as rigging points. (High Steel Riggers are required to climb). Please check with venue in advance. The first one that gets used is 23'-6" DS of the proscenium line.

Stage Draperies:

- Main Curtain: Dark Blue Velour, 36' high x 80' wide (10.97m X 24.38m) – Guillotine Operation, Center split
- Velour Masking: 7 Pairs of black legs, 36' high X 20' wide (10.97m X 6.1m), non-pleated
2 Pairs of black legs, 36' high X 12' wide (10.97m x 3.66m), non-pleated
7 Black borders, 12' high X 80' wide (3.65m X 24.38m), non-pleated
2 Full stage black backdrops 36' high X 80' wide (10.97m X 24.38) with center split
1 Full stage black backdrop (old) 34' high X 76' wide (10.36m X 23.16m) with center split (3rd party owned)
- Scrims: 1 black sharktooth scrim, 30' high X 80' wide (9.14m X 24.38m)
- Cyclorama: 1 front / rear projection PVC plastic, opera milky-white translucent matte finish, 36' high X 80' wide (10.97m X 24.38m).

LINESET	Dis fr/pros	Description	LINESET	Dis fr/pros	Description
0	1'-10"	MAIN CURTAIN	44	33'-3"	
1	2'-6"	BORDER #1	45	33'-11"	
2	3'-2"	LEGS #1 (36'x12') – 56' OPENING	46	34'-7"	
3	4'-6"	HOUSE ELECTRIC #1	47	35'-3"	
4	6'-0"		48	36'-3"	Black Backdrop
5	6'-8"		49	36'-11"	
6	7'-4"		50	37'-7"	
7	8'-0"	BORDER #2	51	38'-3"	BORDER #6
8	8'-8"	LEGS #2 SR – 48' OPENING	52	38'-11"	LEGS #6 – 48' OPENING
9	9'-4"	LEGS #2 SL – 48' OPENING	53	39'-7"	CYC
10	10'-0"		54	40'-3"	
11	10'-8"		55	40'-10"	
12	11'-4"		56	41'-7"	
13	12'-5"		57	42'-3"	BORDER #7
14	13'-1"		58	42'-11"	LEGS #7 – 48' OPENING
15	13'-9"		59	43'-10"	
16	14'-5"		60	44'-7"	
17	15'-1"		61	45'-6"	
18	15'-9"	BORDER #3	62	46'-3"	
19	16' 5"	LEGS #3 – 48' OPENING	63	46'-11"	CYC LX
20	17'-1"		64	47'-8"	
21	17'-9"		65	48'-5"	CYC Groundrow
22	18'-5"		66	49'-1"	
23	19'-1"		67	49'-9"	Black Backdrop - 3rd party owned
24	19'-9"		68	50'-6"	
25	20'-5"		69	51'-6"	
26	21'-1"	HOUSE ELECTRIC #2	70	52'-1"	
27	21'-9"		71	X	S. R. SIDE LADDERS - NO PIPE
28	22'-7"		72	52'-11"	
29	23'-3"	BORDER #4	73	53'-10"	
30	23'-11"	LEG #4 – 48' OPENING	74	55'-6"	
31	24'-7"		75	X	S. L. SIDE LADDERS - NO PIPE
32	25'-3"	TRAVALLER with Black Backdrop	76	56' 7"	No longer a lineset
33	26'-0"		<p>NOTE: Distances are measured from U. S. side of proscenium wall</p> <p>Total Arbor capacity is 1600 lbs.</p> <p>Working Capacity (less pipe weight) is 1,400lbs</p>		
34	26'-8"				
35	27'-4"				
36	28'-0"	HOUSE ELECTRIC #3			
37	28'-7"				
38	29'-4"				
39	30'-0"				
40	30'-7"	BORDER #5			
41	31'-3"	LEG #5 – 48' OPENING			
42	31' 11"				
43	32' 7"				

STAGE EQUIPMENT

Note: Supplementary equipment - SUBJECT TO PRIOR RESERVATION as this equipment is shared between two theatres

Risers:

- 4x @ 4' X 8' X 8" high (Code: A8)
- 4x @ 4' X 8' X 16" high (Code: A16)
- 4x @ 4' X 8' X 24" high (Code: A24)
- 2x @ 4' X 7'-2" X 8" high with angled right side to 8' (Code: BR8)
- 2x @ 4' X 7'-2" X 8" high with angled left side to 8' (Code: BL8)
- 2x @ 4' X 7'-2" X 16" high with angled right side to 8' (Code: BR16)
- 2x @ 4' X 7'-2" X 16" high with angled left side to 8' (Code: BL16)
- 2x @ 4' X 7'-2" X 24" high with angled right side to 8' (Code: BR24)
- 2x @ 4' X 7'-2" X 24" high with angled left side to 8' (Code: BL24)
- 1x @ 4' X 6' X 8" high with angled right side (Code: CR8)
- 1x @ 4' X 6' X 8" high with angled left side (Code: CL8)
- 1x @ 4' X 6' X 16" high with angled right side (Code: CR16)
- 1x @ 4' X 6' X 16" high with angled left side (Code: CL16)
- 5x @ 2' X 8' X 8" high (Code: G8)
- 3x @ 2' X 8' X 24" high (Code: G24)
- 3x each @ 2' X 7'-7" X 8" high with angled side to 8' (Code: HR8 & HL8)
- 2x each @ 2' X 7'-7" X 24" high with angled side to 8' (Code: HR24 & HL24)

We also have 1x @ 4'x4'x8" (E8), 1x @ 3'x4'x16" (F16), 1x @ 4'x4'-10"x8" angled (DR8 & DL8)

Steps and Skirts are available. Tops of all decks are a darker brown.

Speakers Lectern: 2 units, 3' 8" high X 2' 3" wide. Can be equipped with reading lamp and microphone mount

Conductor's podium: 1 @ 32" X 48" X 16"

Music Stands: 100 Manhasset model, available with LED stand lights

Chairs:

- 78x black (new style), padded orchestra chairs
- 38x black (old style), padded orchestra chairs
- 82x burgundy with chrome, padded chairs (Stored in bunker)
- 138x black with chrome, padded chairs (Stored in Playhouse Elevator Lobby)
- 4x Black 30" backless wooden bar stool
- 4x Black 24" backless wooden bar stool

Chain Motors:

- 1x Stacking motor (1-ton) located USL
- 1x Grid motor (1-ton) and basket located DSL (to send goods to grid)
- 3x chain hoists (1-ton), with 60 feet of chain -16 fpm
- *Good selection of motor cable and rigging materials

Personnel Lifts:

- 1x Battery powered "Handy Herman" personnel lift (24' platform)
- 1x Battery powered "GENIE" personnel lift (30' platform)
- 1x Battery powered "JLG" personnel lift (36' platform)

Piano:

- 1x #E3E106 Steinway 9' Grand model D (serial# 375495 from 1962). The venue does not permit our piano to be used as a "Prepared Piano" (Tuning cost is payable by lessee)
- 1x WX1S Yamaha Upright. (Tuning cost is payable by lessee) (Lives in the rehearsal hall)

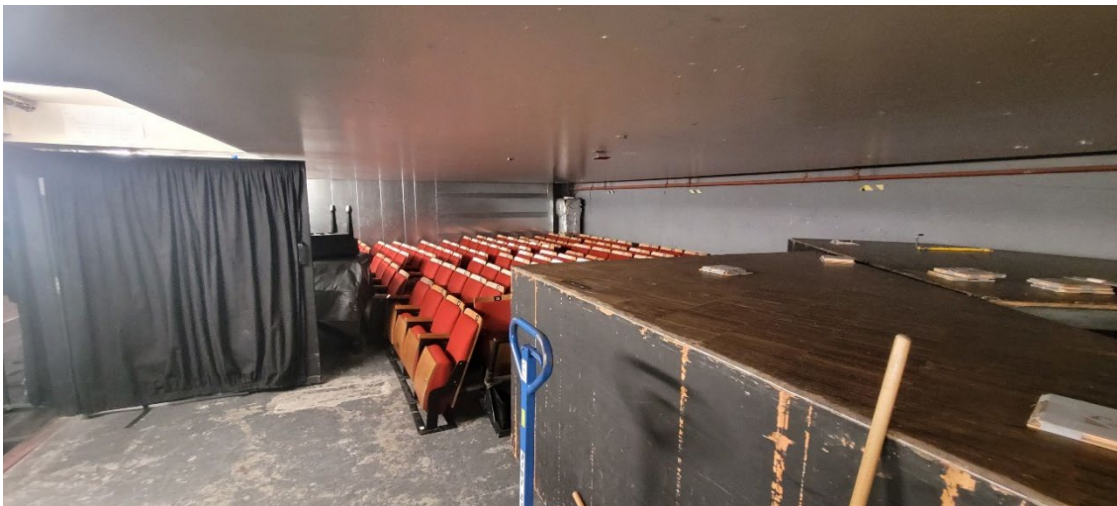
Dance Floor:

- 6x Harlequin Reversible Pro (Black & White) – 41' X 6' 8"
- 6x Harlequin Reversible Pro (Black & Grey) – 41' X 6' 8"
- There is a special piece to cover the DS apron (Black & White) specifically for the Playhouse
- 2x Harlequin Reversible Pro (Black & White) – 30' X 6' 8" to run Upstage/Downstage as run-offs
- 2x spare roles of Harlequin Reversible Pro (Black & White) – Length TBD

ORCHESTRA PIT

- Standard Pit (116 seats removed): Capacity is 75 musicians @ 15 sq.ft. (1.40m²) allowance per musician. Most of the standard pit consists of 5 hydraulic sections operated independently, but not in unison
- Large Pit (199 seats removed): Capacity is 105 musicians @ 15 sq.ft. (1.40m²) allowance per musician.
- Pit is 7'-10" (2.39m) below stage level
- From the center stage edge to the pit rail the standard pit is 12'-4". The pit is on a slight curve, so the sides reduce to around 8'-7". As noted above, there are 5 hydraulic sections, the center section is 14'-5" wide, the section on either side of center are 9'-8" wide and the outer section each side are 8'-0" wide. This gives a total width of 49'-9".
- There is a pit plug far SL and SR that are not hydraulic. These have to be manually removed to extend the pit all the way to the outer edges. These plugs are more pie shaped with a width of 3'-7" at the stage edge and 8'-5" at the pit wall edge. This extends the width of the entire pit to around 66'-7" at the pit wall edge. **Note:** there are also plugs to bring the height up to the level of the stage deck. This is normally used for Broadway shows utilizing sound towers.
- The orchestra pit also underhangs the front edge of the stage by 6'-7". This extends the total usable depth to 18'-11"
- At the back of the pit (under the stage) is a storage room used for seat storage and some of the smaller pit sections. This area can also be used for overflow musicians or percussion to deaden the sound.

Note: additional time and labour is required for seat removal. Further time and labour would be required if removing and storing the large manual sections for a large pit



STAGE CREW

- All rentals include the services of a Head Carpenter (Stage supervisor) and House Electrician (console operator) for up to 8, straight-time hours each. Theatre Rental Grant Licensees will also have Head Sound included for up to 8, straight time hours. Overtime hours will be billed to the Licensee.
- Additional stage crew is supplied through agreement with IATSE Local 118. The total number of stage crew needed to staff an event will be determined by the Theatre's Technical Department, in consultation with the Licensee.
- At all times, stage activity must be supervised by the applicable house technicians. Productions requiring access to the wardrobe facilities will require a house wardrobe person.
- Meal breaks must be given every 4 hours, except that once in a day, stage crew may work a 5 hour block before a meal break is required. If stage crew are required to work beyond these times without a meal break, they will be paid a premium rate until such time as they are able to take their break.
- Meal breaks can be either a 1-hour unpaid break or a ½ hour paid break. A 15 minute coffee break is usually taken at the mid-way point of a 4 or 5 hour block.
- The minimum crew call is 4 hours. A break of greater than 1.5 hours between calls will constitute a new "minimum call"

Note: The QET has a dedicated crew room located off Stage Left. This room has couches, table, small kitchen with sink, microwaves, and

FACILITIES

Rehearsal Room:

- 33' X 57' X 11' high (10.06m X 17.37m X 3.51m) No pillars
- Equipped with mirrors, wall mounted barres and Yamaha Upright piano
- Maple floor (not sprung)
- Located one floor below stage

NOTE – The Stage Left doorway into this room has a cut out to accept cases that are a max of 78" tall.



Dressing Rooms:

- 8 single dressing rooms, off stage right. 7' X 8'-6" (2.13m X 2.59m)



- 2 Medium Chorus Rooms off stage right (18 person capacity)

Chorus Room #1 - 14' X 25' (4.27m X 7.62m)



Chorus Room #2 – (has small fridge) – 19' X 23'-6" (5.79m X 7.16m)



- 1 Chorus Room #3 (40 person capacity). Located one floor below stage level. 17' X 45' (5.18m X 13.71m)



- 1 Chorus Room #4 (40 persons). Located one floor below stage level. 17' X 45' (5.18m X 13.71m)



- 1 Maestro dressing room. Located one floor below stage level. 12' X 9' (3.66m X 2.74m)



Note: All dressing rooms are equipped with mirrors, make-up lights, showers, toilets, sinks, and costume racks.

Green Room:

- 20' X 43' 6" X 7'9" high (6.10m X 12.95m X 2.36m)
- Room has fridge and microwave
- Located one floor below stage

NOTE – The door height for this room is 83" however large road cases must be lifted down a short set of steps to access this level. At the bottom step there is a low ceiling corner of 93". This means larger cases must be limited to less than 5' to be moved down the stairs without hitting the ceiling in line with the bottom step. The only other option is to fully tip the case.



Wardrobe Room:

- Irons, ironing boards, steamers, sewing machine, 3 washers and 3 dryers
- Located off stage right
- CCTV of the stage located on wall
- Fridge and microwave located in hall outside Wardrobe & Chorus Room #1
- Spray Booth used for shoes, gluing and painting
- Main work area is 17' X 34' (5.18m X 10.35m) plus washer/dryer nook 7' X 14' (2.13m X 4.27m)

NOTE: Use of wardrobe facilities and equipment will require House Wardrobe staff



Guest Promotor's Office:

- Located off stage right directly across from the Head Carpenter's office
- CCTV of the stage located on the wall
- 6'-2" X 8'-2" (1.89m X 2.50m)



Guest Production Office:

- Located off stage right around the corner from the Promotor office
- CCTV of the stage located on the wall
- 7'-6" X 13' (2.29m X 3.96m)



Communication and Internet:

Note: Phone and WIFI information: Production Access only, not for use by general public

Off Stage Right:

- | | |
|----------------------------|---|
| • Promoter's Office: | 1 phone, 1 hard wired internet connection plus WIFI |
| • Production Office: | 1 phone, 1 hard wired internet connection plus WIFI |
| • Chorus Room #1: | 1 hard wired internet connection plus WIFI |
| • Chorus Room #2: | 1 hard wired internet connection plus WIFI |
| • Dressing rooms 1 thru 8: | WIFI |
| • Wardrobe Room: | 1 phone, 1 hard wired internet connection plus WIFI |

Downstairs:

- | | |
|------------------|---|
| • Green Room: | 2 phone, 1 hard wired internet connection plus WIFI |
| • Maestro Room: | WIFI |
| • Security Room: | WIFI |

On Stage:

- | | |
|-----------------------------|---|
| • Stage Right & Stage Left: | 1 hard wired internet connection each side, plus WIFI |
|-----------------------------|---|

FOH:

- | | |
|--------------------------|---|
| • Mix Position in House: | 1 hard wired internet connection, plus WIFI |
| • Salons: | WIFI |
| • Main Lobby: | WIFI |
| • Orchestra level: | WIFI |

Note: WIFI Upload / Download speed is normally 40Mbps (6G). Wired internet speed is normally 100 Mbps

POWER

Temporary Power – Lighting / Video / General:

STAGE LEFT:

- 1x 30 amps 1 Ø 125/250V 60 cycles - L14-30 Twist Connector
- 1x 50 amps 1 Ø 125/250V 60 cycles - 14-50R Range Plug

UP STAGE LEFT: (600A Total Available)

- 1x 400 amps 3 Ø 120/208V 60 cycles - Type J CAM-Lok
- 1x 200 amps 3 Ø 120/208V 60 cycles - Type J CAM-Lok
- 1x 30 amps 3 Ø 120/208V 60 cycles - L21-30 Twist Connector

UP STAGE CENTER: (100A Total Available)

- 1x 100 amps 3 Ø 120/208V 60 cycles - Tie in required
- 1x 70 amps 3 Ø 120/208V 60 cycles - Tie in required
- 1x 50 amps 1 Ø 125/250V 60 cycles - 14-50R Range Plug
- 2x 30 amps 3 Ø 120/208V 60 cycles - L21-30 Twist Connector

STAGE RIGHT: (800A Total Available)

- 1x 400 amps 3 Ø 120/208V 60 cycles - Type J CAM-Lok
- 2x 200 amps 3 Ø 120/208V 60 cycles - Type J CAM-Lok
- 1x 100 amps 3 Ø 120/208V 60 cycles - Type J CAM-Lok
- 1x 30 amps 1 Ø 125/250V 60 cycles - L14-30 Twist Connector
- 3x 30 amps 3 Ø 120/208V 60 cycles - L21-30 Twist Connector

LOADING DOCK: (200A Total Available)

- 1x 200 amps 3 Ø 120/208V 60 cycles - Type J CAM-Lok (normally not used)
- 1x 100 amps 3 Ø 120/208V 60 cycles - Tie in required
- 1x 70 amps 3 Ø 120/208V 60 cycles - Tie in required
- 1x 40 amps 3 Ø 120/208V 60 cycles - Tie in required
- 1x 30 amps 3 Ø 120/208V 60 cycles - L21-30 Twist Connector
- 1x 30 amps 1 Ø 125/250V 60 cycles - L14-30 Twist Connector
- 2x 50 amps 1 Ø 125/250V 60 cycles - 14-50R Range Plug. (For bus tie-in. Connectors located outside dock doors)

FLY FLOOR:

- 1x 30 amps 3 Ø 120/208V 60 cycles - L21-30 Twist Connector

EYEBROW FOH CATWALK SL:

- 1x 200 amps 3 Ø 120/208V 60 cycles - Type J CAM-Lok

FOH BOX BOOMS HOUSE LEFT/RIGHT:

- 3x 30 amps 3 Ø 120/208V 60 cycles - L21-30 Twist Connector (each side)

FOH ALCOVE HOUSE LEFT:

- 1x 30 amps 1 Ø 125/250V 60 cycles - L14-30 Twist Connector

BALCONY RAIL:

- 4x 30 amps 3 Ø 120/208V 60 cycles - L21-30 Twist Connector
- 2x 15 amps 1 Ø 125V - 5-15 Connector

ROAD FOH MIX POSITION:

- 2x 15 amps 1 Ø 125V - 5-15 Connector

IN FRONT OUTSIDE LIGHTING BOOTH:

- 1x 30 amps 3 Ø 120/208V 60 cycles - L21-30 Twist Connector

TROUBLE ROOMS HOUSE LEFT/RIGHT:

- 1x 30 amps 3 Ø 120/208V 60 cycles - L21-30 Twist Connector (each side)

Note: For Spot Booth power please see section specific to Spot Booth information.

LOBBY:

LOWER LEVEL SIDES

- 1x 30 amps 3 Ø 120/208V 60 cycles - L21-30 Twist Connector (House Left & House Right)

LEVEL 1 – MAIN FLOOR

- 1x 30 amps 3 Ø 120/208V 60 cycles - L21-30 Twist Connector (House Left Side)
- 1x 30 amps 1 Ø 125/250V 60 cycles - L14-30 Twist Connector (House Right Side by Window)
- 1x 30 amps 3 Ø 120/208V 60 cycles - L21-30 Twist Connector (House Right Side)
- 1x 30 amps 3 Ø 120/208V 60 cycles - L21-30 Twist Connector (Under Stairs Behind Box Office)
- 1x 30 amps 3 Ø 120/208V 60 cycles - L21-30 Twist Connector (Center Pillar)
- 1x 30 amps 3 Ø 120/208V 60 cycles - L21-30 Twist Connector (By Plaza Windows)
- 1x 30 amps 3 Ø 120/208V 60 cycles - L21-30 Twist Connector (Outside Plaza Doors on Ceiling of Balcony)

LEVEL 2

- 1x 30 amps 3 Ø 120/208V 60 cycles - L21-30 Twist Connector (House Left Side)
- 1x 30 amps 3 Ø 120/208V 60 cycles - L21-30 Twist Connector (House Right Side)

LEVEL 3

- 1x 30 amps 3 Ø 120/208V 60 cycles - L21-30 Twist Connector (House Left Side)
- 1x 30 amps 1 Ø 125/250V 60 cycles - L14-30 Twist Connector (House Right Side)
- 2x 30 amps 3 Ø 120/208V 60 cycles - L21-30 Twist Connector (House Right Side)

Temporary Power – Audio (Isolated Ground – This power is in addition to the above)

STAGE LEFT

- 1x 30 amps 3 Ø 125/208V 60 cycles - L21-30 Twist Connector on Technical Ground

DOWN STAGE LEFT PROSCENIUM:

- 1x 200 amps 3 Ø 120/208V 60 cycles - Type J CAM-Lok - For use with touring sound systems. (Works through isolation transformer with dedicated isolated earth ground)
- 1x 15 amps 1 Ø 125V - 5-15 Connector on Technical Ground
- 1x 20 amps 1 Ø 125V - L5-20 Twist Connector on Technical Ground
- 2x 20 amps 1 Ø 250V - L6-20 Twist Connector on Technical Ground
- 1x 30 amps 1 Ø 250V - L6-30 Twist Connector on Technical Ground
- 1x 30 amps 3 Ø 125/208V 60 cycles - L21-30 Twist Connector on Technical Ground

UP STAGE CENTER:

- 1x 20 amps 1 Ø 250V - L6-20 Twist Connector on Technical Ground
- 1x 20 amps 1 Ø 120/208V - L5-20 Twist Connector on Technical Ground
- 1x 15 amps 1 Ø 125V - 5-15 Connector on Technical Ground

DOWN STAGE RIGHT PROSCENIUM:

- 1x 100 amps 3 Ø 120/208V 60 cycles - Type J CAM-Lok
- 2x 15 amps 1 Ø 125V - 5-15 Connector on Technical Ground
- 3x 20 amps 1 Ø 125V - L5-20 Twist Connector on Technical Ground
- 3x 20 amps 1 Ø 250V - L6-20 Twist Connector on Technical Ground
- 1x 30 amps 3 Ø 120/208V 60 cycles - L21-30 Twist Connector on Technical Ground

LOADING DOCK

- 1x 100 amps 3 Ø 120/208V 60 cycles - Type J CAM-Lok

ORCHESTRA PIT:

- 2x 20 amps 1 Ø 120V - L5-20 Twist Connector on Technical Ground

FOH BOX FRONTS HOUSE LEFT/RIGHT:

- 1x 20 amps 1 Ø 250V - L6-20 Twist Connector on Technical Ground (each side)

BALCONY RAIL:

- 2x 20 amps 1 Ø 250V - L6-20 Twist Connector on Technical Ground
- 1x 15 amps 1 Ø 125V - 5-15 Connector on Technical Ground

ROAD FOH MIX POSITION:

- 4x 15 amps 1 Ø 125V - 5-15 Connector on Technical Ground

CONTROL BOOTH:

- 1x 50 amps 1 Ø 125/250V 60 cycles - 14-50R Range Plug on Technical Ground
- 1x 30 amps 3 Ø 120/208V 60 cycles - L21-30 Twist Connector on Technical Ground
- 3x 20 amps 1 Ø 250V - L6-20 Twist Connector on Technical Ground

TROUBLE ROOMS HOUSE LEFT/RIGHT:

- 1x 15 amps 1 Ø 125V - 5-15 Connector on Technical Ground

LOBBY

LEVEL 3:

- 1x 20 amps 1 Ø 250V - L6-20 Twist Connector on Technical Ground (House Left & Right Side)

LIGHTING

Note: A detailed Lighting Plot, Paperwork and Magic Sheets are available upon request in Pdf. We can also provide CAD files in VectorWorks (.vwx) and paperwork in Lightwright (.lw6). Please always check the actual Lighting Plot download file on the website for the most up-to-date info

Lighting Consoles:

ETC EOS Ti with:

- Full tracking back-up (EOS RPU3)
- 2 x 20 sub-master wing
- Dual monitor designer remote video station (EOS RVI3)
- Full function tablet remote (RFR) or use of the app on a phone
- 24567 channels / 24567 outputs

ETC Paradigm:

Separate, house-light/work-light control. Control of houselights is not given to Road Shows. Furthermore, when audience are moving around (pre-show/intermission/post-show), houselights must be at the venue's set 100%

Dimmers/Circuits:

2.4 Kw - Stage Pin

- 288 - Front of House (Catwalks)
- 168 - Front of House (Box Booms and Balcony Rail)
- 535 - Onstage
- 6 - Follow Spot Booth
- 6 - House Projection Booth

5 Kw - Stage Pin

- 8 - Front of House (Catwalks)
- 12 - Front of House (Box Booms and Balcony Rail)
- 20 - Onstage

Control:

DMX - There are 4x patchable DMX dry lines located at:

- Front of House Mix Position
- House Lighting Booth
- Down Stage Right
- Down Stage Left

ETC Gateway / Cat5e/6 Network:

- All FOH / Balcony Rail lighting positions and all dimmer racks are/can be connected using an ETC DMX Gateway network plus Cat 5e dry lines
- There are 4x cat5e/6 dry lines at FOH Mix Position. 2x go to lighting booth (cat5e) and 2x go to DSR (cat6)
- Stage Right there is an ETC DMX Gateway network Down Stage and Upstage plus Cat 5e dry lines
- Down Stage Left there is an ETC DMX Gateway network
- There is a 2 port ETC DMX Gateway located in the lobby near coat check
- Several portable input/output ETC DMX Gateways
- Entire system can be connected to a console via SACN

Permanently Installed Positions:

SPOT BOOTH

- 4x - Lycian 1295 ELT 3Kw Xenon Follow Spots

ALCOVE LEFT

- 5x - 10° ETC Source 4 @ 750 watts: 12" x 12" (30.05 cm x 30.05 cm) colour frame

ALCOVE RIGHT

- 5x - 10° ETC Source 4 @ 750 watts: 12" x 12" (30.05 cm x 30.05 cm) colour frame

CATWALK #3

- 6x - 5° ETC Source 4 @ 750 watts: 14" x 14" (35.05 cm x 35.05 cm) colour frame
- 6x - 15° to 30° ETC Source 4 zooms @ 750 watts: 7 ½" x 7 ½" (19.05 cm x 19.05 cm) colour frame
- 2x - Vari-Lite VLZ Wash (LED Moving Lights) – Normally do not move unless approved.

CATWALK #2

- 6x - 10° ETC Source 4 @ 750 watts: 12" x 12" (30.05 cm x 30.05 cm) colour frame
- 14x - 14° ETC Source 4 @ 750 watts: 7 ½" x 7 ½" (19.05 cm x 19.05 cm) colour frame
- 6x - 19° ETC Source 4 @ 750 watts: 6 ½" x 6 ½" (16 cm x 16 cm) colour frame
- 2x - 19° ETC Source 4 @ 750 watts (conductor bows): 6 ½" x 6 ½" (16 cm x 16 cm) colour frame
- 4x - Vari-Lite VLZ Profile (LED Moving Lights) – Normally do not move unless approved.

CATWALK #1

- 4x - 10° ETC Source 4 @ 750 watts: 12" x 12" (30.05 cm x 30.05 cm) colour frame
- 14x - 14° ETC Source 4 @ 750 watts: 7 ½" x 7 ½" (19.05 cm x 19.05 cm) colour frame
- 6x - 19° ETC Source 4 @ 750 watts: 6 ½" x 6 ½" (16 cm x 16 cm) colour frame

EYEBROW SLOT

- 2x - 14° ETC Source 4 @ 750 watts: 7 ½" x 7 ½" (19.05 cm x 19.05 cm) colour frame (conductor down)
- 4x - 36° ETC Source 4 @ 750 watts: 6 ½" x 6 ½" (16 cm x 16 cm) colour frame (orchestra downlights)
- 2x - Kreios FLX90 LED Worklights

BALCONY RAIL

- 6x - 19° ETC Source 4 @ 750 watts: 6 ½" x 6 ½" (16 cm x 16 cm) colour frames
- 4x - 26° ETC Source 4 @ 750 watts (curtain warmers): 6 ½" x 6 ½" (16 cm x 16 cm) colour frames
- 1x - 14° ETC Source 4 @ 750 watts: 7 ½" x 7 ½" (19.05 cm x 19.05 cm) colour frame
- 2x - Vari-Lite VLZ Wash (LED Moving Lights) – Normally do not move unless approved.

BOX BOOM LEFT 3

- 2x - 26° ETC Source 4 @ 750 watts: 6 ½" x 6 ½" (16 cm x 16 cm) colour frame
- 2x - 19° ETC Source 4 @ 750 watts: 6 ½" x 6 ½" (16 cm x 16 cm) colour frame
- 2x - 14° ETC Source 4 @ 750 watts: 7 ½" x 7 ½" (19.05 cm x 19.05 cm) colour frame
- 1x - 10° ETC Source 4 @ 750 watts: 12" x 12" (30.05 cm x 30.05 cm) colour frame
- 1x - Vari-Lite VLZ Wash (LED Moving Lights) – Normally do not move unless approved.

BOX BOOM RIGHT 3

- 2x - 26° ETC Source 4 @ 750 watts: 6 ½" x 6 ½" (16 cm x 16 cm) colour frame
- 2x - 19° ETC Source 4 @ 750 watts: 6 ½" x 6 ½" (16 cm x 16 cm) colour frame
- 2x - 14° ETC Source 4 @ 750 watts: 7 ½" x 7 ½" (19.05 cm x 19.05 cm) colour frame
- 1x - 10° ETC Source 4 @ 750 watts: 12" x 12" (30.05 cm x 30.05 cm) colour frame
- 1x - Vari-Lite VLZ Wash (LED Moving Lights) – Normally do not move unless approved.

BOX BOOM LEFT 2

- 2x - 36° ETC Source 4 @ 750 watts: 6 ½" x 6 ½" (16 cm x 16 cm) colour frame
- 2x - 26° ETC Source 4 @ 750 watts: 6 ½" x 6 ½" (16 cm x 16 cm) colour frame
- 2x - 19° ETC Source 4 @ 750 watts: 6 ½" x 6 ½" (16 cm x 16 cm) colour frame

BOX BOOM RIGHT 2

- 2x - 36° ETC Source 4 @ 750 watts: 6 ½" x 6 ½" (16 cm x 16 cm) colour frame
- 2x - 26° ETC Source 4 @ 750 watts: 6 ½" x 6 ½" (16 cm x 16 cm) colour frame
- 2x - 19° ETC Source 4 @ 750 watts: 6 ½" x 6 ½" (16 cm x 16 cm) colour frame

BOX BOOM LEFT 1

- 2x - 36° ETC Source 4 @ 750 watts: 6 ½" x 6 ½" (16 cm x 16 cm) colour frame
- 2x - 26° ETC Source 4 @ 750 watts: 6 ½" x 6 ½" (16 cm x 16 cm) colour frame
- 6x - 19° ETC Source 4 @ 750 watts: 6 ½" x 6 ½" (16 cm x 16 cm) colour frame

BOX BOOM RIGHT 1

- 2x - 36° ETC Source 4 @ 750 watts: 6 ½" x 6 ½" (16 cm x 16 cm) colour frame
- 2x - 26° ETC Source 4 @ 750 watts: 6 ½" x 6 ½" (16 cm x 16 cm) colour frame
- 6x - 19° ETC Source 4 @ 750 watts: 6 ½" x 6 ½" (16 cm x 16 cm) colour frame

PROSCENIUM SLOT LEFT

- 2x - 36° ETC Source 4 @ 750 watts: 6 ½" x 6 ½" (16 cm x 16 cm) colour frame
- 2x - 26° ETC Source 4 @ 750 watts: 6 ½" x 6 ½" (16 cm x 16 cm) colour frame
- 2x - 19° ETC Source 4 @ 750 watts: 6 ½" x 6 ½" (16 cm x 16 cm) colour frame

PROSCENIUM SLOT RIGHT

- 2x - 36° ETC Source 4 @ 750 watts: 6 ½" x 6 ½" (16 cm x 16 cm) colour frame
- 2x - 26° ETC Source 4 @ 750 watts: 6 ½" x 6 ½" (16 cm x 16 cm) colour frame
- 2x - 19° ETC Source 4 @ 750 watts: 6 ½" x 6 ½" (16 cm x 16 cm) colour frame

STAGE LEFT AND RIGHT LADDERS (Line set 71 & 75).

4x - Ladders each side (height and wing position easily adjusted); ladders mounted on flying track running up and down stage 43' (13.11m) left and right of centre. Fixtures easily removed or rehung.

- 32x - 26° ETC Source 4 @ 750 watts (16 per side): 6 ½" x 6 ½" (16 cm x 16 cm) colour frames
- 32x - 19° ETC Source 4 @ 750 watts (16 per side): 6 ½" x 6 ½" (16 cm x 16 cm) colour frames

CYC LIGHTS (Line set 63)

- 8x - Altman Sky Cyc 4 @ 1000 watts: 15 ¾" x 15 3/8" (40 cm x 39 cm) colour frames

GROUND ROW (Line set 65)

- 8x - Ianaro Pallas 4 @ 1000 watts per circuit: 10 ¾" x 10 ¾" (27.3 cm x 27.3 cm) colour frames

Note: Ground Row is normally flown as part of the house hang. It is easily removed for use on stage.

Unused Equipment Totals:

- 20x - 50° ETC Source 4 @ 750 watts: 6 ½" x 6 ½" (16 cm x 16 cm) colour frame
- 68x - 36° ETC Source 4 @ 750 watts: 6 ½" x 6 ½" (16 cm x 16 cm) colour frame
- 80x - 26° ETC Source 4 @ 750 watts: 6 ½" x 6 ½" (16 cm x 16 cm) colour frame
- 62x - 19° ETC Source 4 @ 750 watts: 6 ½" x 6 ½" (16 cm x 16 cm) colour frame
- 2x - 14° ETC Source 4 @ 750 watts: 7 ½" x 7 ½" (19.05 cm x 19.05 cm) colour frame
- 1x - 10° ETC Source 4 @ 750 watts: 12" x 12" (30.05 cm x 30.05 cm) colour frame
- 72x - ETC Source 4 pars @ 750 watts: 7 ½" x 7 ½" (19.05 cm x 19.05 cm) colour frame *Note: Another 8x are at the Playhouse on long term loan. If required at the QET, permission must be requested in advance.*
 - 50x - medium flood lenses (house standard)
 - 30x - wide flood lenses (house standard)
 - A large selection of lenses are available
- 48x - Altman PAR 64 Medium Flood @ 1000 watts:
 - Set as 4x bars of six and 24x set as singles- 10" x 10" (25.4 cm x 25.4 cm) colour frames.
 - Some Narrow and Very Narrow lamps available.
- 6x - Altman PAR 64 Medium Flood @ 1000 watts (For Perimeter Blue Running Lights)

- 16x - FE Lighting 3 cell Cyc fixtures @ 1000 watts: 13 ¾" x 10 ¼" (35 cm x 26 cm) colour frame
- 7x - FE Lighting 1 cell Cyc fixtures @ 1000 watts: 13 ¾" x 10 ¼" (35 cm x 26 cm) colour frame
- 24x - Kreios FLX90 LED Worklights (Most normally have fixed locations around the stage)

Miscellaneous Gear:

- 2x - Atomic 3000 strobes (120v)
- 8x - Apollo smart move dual gobo rotators (Old Stock)
- Top Hats / Extenders
 - 120x - 6 ¼" x 6 ¼"
 - 90x - 7 ½" x 7 ½"
- Barn Doors (Old Stock)
 - 24x - 10"x 10"
- Side Arms
 - 40x - 12"
 - 6x - 18"
- Template Holders
 - 60x - "A" size for Source 4
 - 80x - "B" size for Source 4
- Floor Booms: A reasonable quantity of boom bases and pipe are available, varying in height from 4' to 20'.
- Floor Bases: A reasonable quantity of single fixture bases
- Rolling Floor Stands; 8x - 4' (1.22 m)
- 2x -Small distros mainly for balcony rail movers to use L21-30 and convert to 208V (true1, power-con, or L6-20 adapters)
- 1x 200A Motion Labs rolling 208V half size distro. Wired for Soca and L6-20 connectors. This is wired Christie Lites style.
- 1x 20' piece of 4/0 - 5 wire feeder

Atmospheric:

- 1x – MDG ATMe Hazer – (There will be an added fee for haze fluid/CO2). This lives on the SL side catwalk.
- 1x – Ultratec Versa Fan DMX

Notes:

- All stage circuit connectors are 20-amp stage pin. There are a few in the Orchestra Pit that are L5-20 style twist-lock.
- A sufficient amount of single and multi-cable for use with theatre equipment stock is available. Adding equipment may require additional cable. We can adapt some Stage Pin to either L5-20 twist-lock or 5-15 U-Ground.
- A reasonable amount of 5-pin DMX and 4-pin scroller cable. Adding equipment may require additional cable.
- While we stock a good inventory of commonly used Rosco and Lee gel colours, we do not promise to have any particular colours that may be needed for your production.
- We have a small selection of Gobos in A & B sizes.
- Please always check the latest Lightwright paperwork for the most up-to-date equipment totals and info.

Stage House Lighting Hang:

- The Queen Elizabeth Theatre utilizes a house hang that may allow for a shorter set up time. The standard house hang includes all permanent positions plus:

1 Electric (line set 3)

- 5x - VL VLZ Profile
- 4x - VL VLZ Wash
- 4x - Kreios FLX90 LED Worklights

2 Electric (line set 26)

- 4x - VL VLZ Profile
- 5x - VL VLZ Wash
- 4x - Kreios FLX90 LED Worklights

3 Electric (line set 36)

- 6x - VL VLZ Wash
- 2x - VL VLZ Profile
- 4x - Kreios FLX90 LED Worklights

Note: all stage electrics are able to be fully stripped of fixtures and cable. Dimmer power to electrics is done by Soca via breakout boxes. There are no permanent dimmer raceways on system pipes.

Followspot Booth:

- The Spot Booth is located above the seats in the upper balcony (starting at row 23 in the balcony). It is accessed via a catwalk from the house right stairwell
- Spot Booth dimensions are 33' long x 14' deep
- The booth has clear-com, program sound, spot chairs, air condition and a bathroom. The glass window covers almost the entire length of the booth with only small seams in the glass (except for center where there is a steel beam)
- Spot Booth currently utilizes 4x - Lycian 1295 ELT 3Kw Xenon Follow Spots. Wheels are removed
- Spot Booth has 1x 225A sub-panel which has:
 - 2x 30 amps 3 Ø 250V 60 cycles – L15-30 Twist Connectors
 - 6x 30 amps 1 Ø 250V 60 cycles – L6-30 Twist Connectors (4x used for house spots)



Lighting Booth:

- The Lighting Booth is located at the back of the main floor and is raised above the seats. Booth is accessed from level 2 in the lobby, house right. You cannot not access directly from the house on the main floor.
- The booth shares space with both Audio and Video. However, the lighting area is separated by walls and doors.
- There is a red spotting light located above the center video booth that can be switched on manually if required.



AUDIO

House Speaker Layout:

- A Left-Right-Centre - Meyer Mica / M'elodie line array system (8x mica / 5x M'elodi per side, 12x M'elodie in center cluster)
- 8x HP700 subs (6x mounted above proscenium + 2x on deck when needed)
- 4x UPA + 7x M1D front fills.
- Patching facilities exist to allow control of this system through touring mixer.

NOTE: this system is not designed to operate past 103dB ("A" weighted) at the mix position.

Hearing Assist:

- Listen Tech (LCS-121-01) Wi-Fi/RF Advanced System. This system combines Wi-Fi and RF technologies to give compliant audio coverage PLUS expanded coverage to everyone with a smartphone or tablet.
- 22x Listen Tech Receivers (72 MHz) with universal ear speaker plus neck loop.

Touring Mix Location - Centre Orchestra:

- For the full-size audio mix / lighting position, seats 41-56 in rows 23-25 are removed inclusive. For a smaller centre/audio only position, seats 45-52 in rows 23-25 are removed.
- AC Power audio feeds plus intercom available to centre of the 3 sections. Sound snake traverses from down stage left location to mix location via a 115' long x 8" diameter pipe.
- Pipe and Drape covers the back of the entire FOH mix position.

Note: THESE SEATS MUST BE HELD FROM SALE IN ADVANCE SO THEY CAN BE REMOVED FOR YOUR EVENT (IF REQUIRED)

Note: production is not permitted to use any space that is designated for mobility seating

Touring PA Positions:

- 2x 2-ton motors are permanently installed each side DSR and DSL (in front of Proscenium) for hanging tour PA systems.
- From the proscenium line the first 2-ton is located minus 2'-6" and the second is minus 5'-6". From center stage the SL points are located at 27'-0" and SR is located at 27'-6". (Gear using these points cannot block the fire curtain).
- House array can store in ceiling if not being used.

Portable Speakers:

- 4x Meyer Monitor UM-100P Wedges
- 4x Meyer UPA Portable Speakers / Stage Monitors (2x hung as DS side-fills and 2x portable)
- 4x Meyer UPM-1 (These are permanently mounted in the wings 2x SL and 2x SR to act as monitors)

FOH House Mixing Console:

- AVID Venue S6L 24D (E6L-144 Engine)
- Console I/O is 8 Analog in 8 Analog Out and 8 in/out standard AES
- Stage Rack for the FOH desk is 64 In / 24 Analog Out
- Waves card is in this desk.
- 3x Meyer Galileo for signal processing

Notes:

- No AES50, no Dante, and no patchable MADI and we do not carry AES cabling in inventory
- We don't have direct AVB lines run from the stage to the mix position

Monitor House Mixing Console:

- AVID Venue S6L 32D (E6-112 Engine)
- Console I/O is 8 Analog in 8 Analog Out and 8 in/out standard AES
- Stage 64 Monitor Rack is 48 In / 16 Analog Out

Note: this console is shared between venues. Must confirm availability with venue.

CD Player:

- None

Paging & Program:

- To lobbies, dressing rooms, rehearsal rooms, wardrobe room, hallways etc. from stage manager station down stage right or from wireless Clear-com.

Intercom:

- Two (2) Channel Clear-com to all operating stations with the master 4 channel station at stage manager's location (down stage right).
- Portable stations are available.
- 1x FreeSpeak II 5 Base Station with 4x FreeSpeak II BP19 Beltpacks & CC110 Lightweight Single-Ear Headsets. Note: there is one (1) spare beltpack that is shared between the QET and Playhouse venue if needed.

Microphones / DI's:

• Shure SM58	8
• Shure SM57	5
• Shure Beta91	1
• AKG C451	4 (plus 2 CK8 shotgun capsules)
• AKG C414 XLS	6 (flat response 9 patterns)
• Earthworks P30/C	4 (choir mics)
• Neumann KM 143	1
• Neumann KM 184	18
• Neumann KM 185	6
• Neumann KMS 105	4
• Schoeps No. 139007	2 (stereo Set CMC 6+ MK5 (adjustable patterns / matched pair)
• Sennheiser MD 421-II	4
• Sennheiser MKH416 Shotgun	2
• Sennheiser e902	1
• Sennheiser e914	2
• Sennheiser e904	4
• Sennheiser e906	6
• Radial JDI	4
• Radial J48	6
• Cable Factory DI-Pro P1	2
• Cable Factory DI-Pro PC	1

Stage Wireless Mics:

- 3x Shure Axient AD4Q Quad receivers (max 12 channels from the options)
 - 12x Shure AD2 KSM8 Handheld Microphones
 - 12x Shure AD1 Bodypacks with TA4F connector
 - 10x Oscar Sound Technologies HM 701 Headset mic with TA4F connector
 - 4x Oscar Sound Technologies TL40 Lav mic with TA4F connector
 - 2x DPA 4060 Lav (Black)
 - 8x Instrument cables with TA4F connectors

Lobby Wireless Mics:

- 1x Shure ULXD4 single receiver with Shure ULXD2 / SM58 Handheld transmitter

Cables & Stands:

- Assortment of stands (K&M 210/9 tall / K&M 259 Short), cables, splitter boxes, adapters, etc.

Note: availability of above subject to prior reservation.

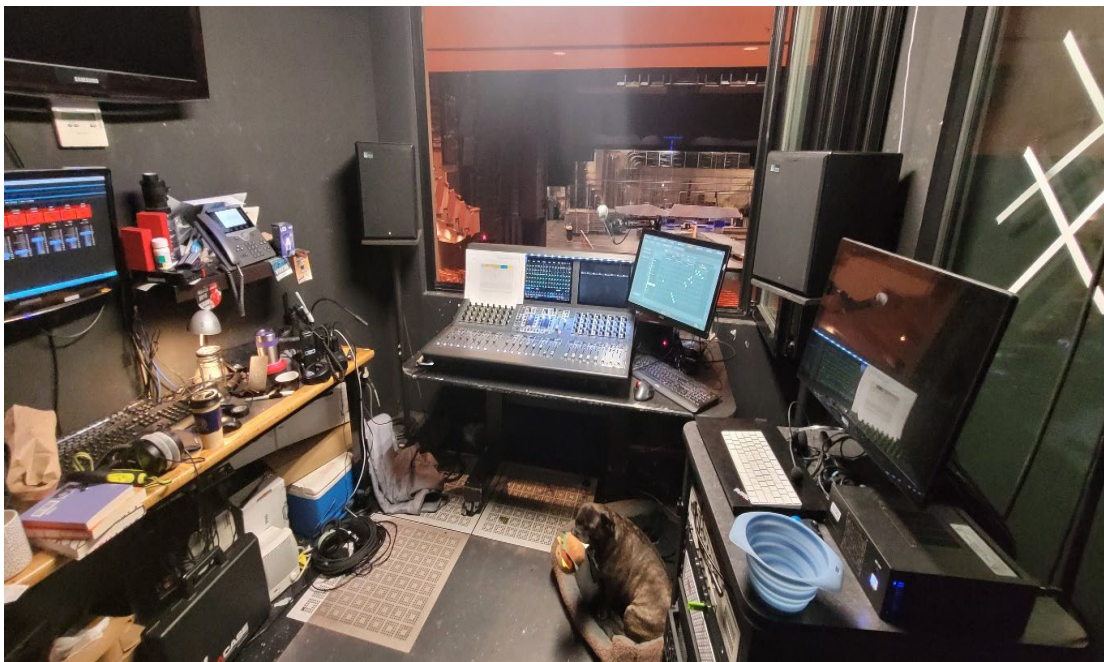
Pro Tools / Audio Recording Rig:

- 128 channel Avid Pro Tools recording rig located on an Apple Mac Pro rack mounted Tower
- Directly integrated with the S6L via AVB

Note: recording media not provided

Audio Booth:

- The Audio Booth is located at the back of the main floor and is raised above the seats. Booth is accessed from level 2 in the lobby, house left. You cannot not access directly from the house from the main floor.
- The glass window fully opens and folds to the right of the room, for mixing purposes.
- The booth shares space with both Lighting and Video. Video is separated from Audio by a glass sliding door. The Lighting Booth is fully separated with a door.



VIDEO

In 2021, the Queen Elizabeth Theatre underwent significant upgrades to its video system, providing clients with an in-house solution for many of their video needs. Multi-camera video shoots for recording, streaming, projection, or broadcast are all now possible. Additionally, we have improved our signal distribution infrastructure, which allows us to send or receive video signals to and from virtually anywhere in the theatre. Please inquire if you have specific questions.

Note: there are added costs if using the video system. Please inquire for further information or if you have specific questions.

Note: while most parts of the system can do 4K, there still may be several concerns surrounding this format. Therefore, the venue will only confirm that we can run in Full HD.

Cameras:

- 2x Blackmagic Design URSA Broadcast 4K cameras (mounted permanently on roboheads on either side of our lighting and audio control booths)
- 3x Blackmagic Design URSA Broadcast 4K cameras with tripods, studio packages and Canon 20X, 40X and 90X lenses (one each)
- 1x Canon CR-N500 4K PTZ camera with tripod
- 1x Marshall CV420-CS 4K compact camera w. 3.8-16mm lens
- 1x Blackmagic Design Micro Studio house camera (permanent wide shot of stage, from balcony rail)

Control Booth:

Video control is located one level below the stage (under the stage, on the stage left side)

- Main and BU QLab 4.7/5.3 playback computers. Recommended codes for video files are: ProRes 422 Proxy, Hap Standard, ProRes 422 LT, Hap Q, Photo-JPEG, H.265, and H.264
- Main and BU streaming computers on dedicated show internet network
- Up to 12x channels of video record (8x channels ProRes, 4x channels H.264)
- Blackmagic Design Constellation 8K switcher and 2 M/E control panel, camera shading, robo control, camera director and streaming/record stations
- 4K fibre signal distribution throughout theatre (stage left and right, upstage-centre, loading dock for connection to remote broadcast trucks, projection booth, house left and right isolation rooms, FOH cockpit).



Projectors:

- 1x Panasonic PT-RZ21K 3-chip, 20000 lumen laser projector broadcasting in Full HD (This projector is normally for the Plaza. Please confirm availability)
 - One ET-D75LE95 projector lens - 0.36:1 throw ratio
 - One ET-D75LE06 projector lens - 1.0-1.2:1 throw ratio
 - One ET-D75LE30 projector lens - 2.7-5.2:1 throw ratio
 - One ET-D75LE40 projector lens - 5.1-8.2:1 throw ratio
 - One ET-D75LE08 projector lens - 8.2-15.4:1 throw ratio

Note: all throw ratios based on a 16:9 image

Projection Screen:

- 1x AV Stumpfl Vario Frame - 32' x 18' with either a front or rear projection surface with rigging hardware to be flown.

Surtitle Screen:

- The venue stores Vancouver Opera's screen that is on a motorized winch just downstage of the proscenium. It stores out of view and can be lowered fully to the ground. The surface is 33"h x 204"w and the overall dimensions are 45.5"h x 216.5"w.

Miscellaneous Gear:

- Various video cross convertors
- 2x each of 50", 42" and 32" confidence monitors w. stands
- Dsan PerfectCue remote slide cuing system
- Dedicated clear-com

Projection Booth:

- The Projection Booth is located at the back of the main floor in the center and is raised above the seats. Booth is accessed from level 2 in the lobby via elevator or stairs. You cannot not access directly from the house on the main floor.
- There is a small scaffold kit here to allow for stackable projectors.
- The entire booth shares space with both Lighting and Audio. Video is separated from audio by a glass sliding door. The Lighting Booth is fully separated with a door from the video side. 3x air condition units present to cool projectors.
- When there is no video on a show this space can be used by road production for such purposes as Stage Management or a road Lighting Console. Usable space is 6'w x 8'd.



Note: if using rented sides screens, we usually utilize the trouble rooms for the placement of the projectors to hit these locations.

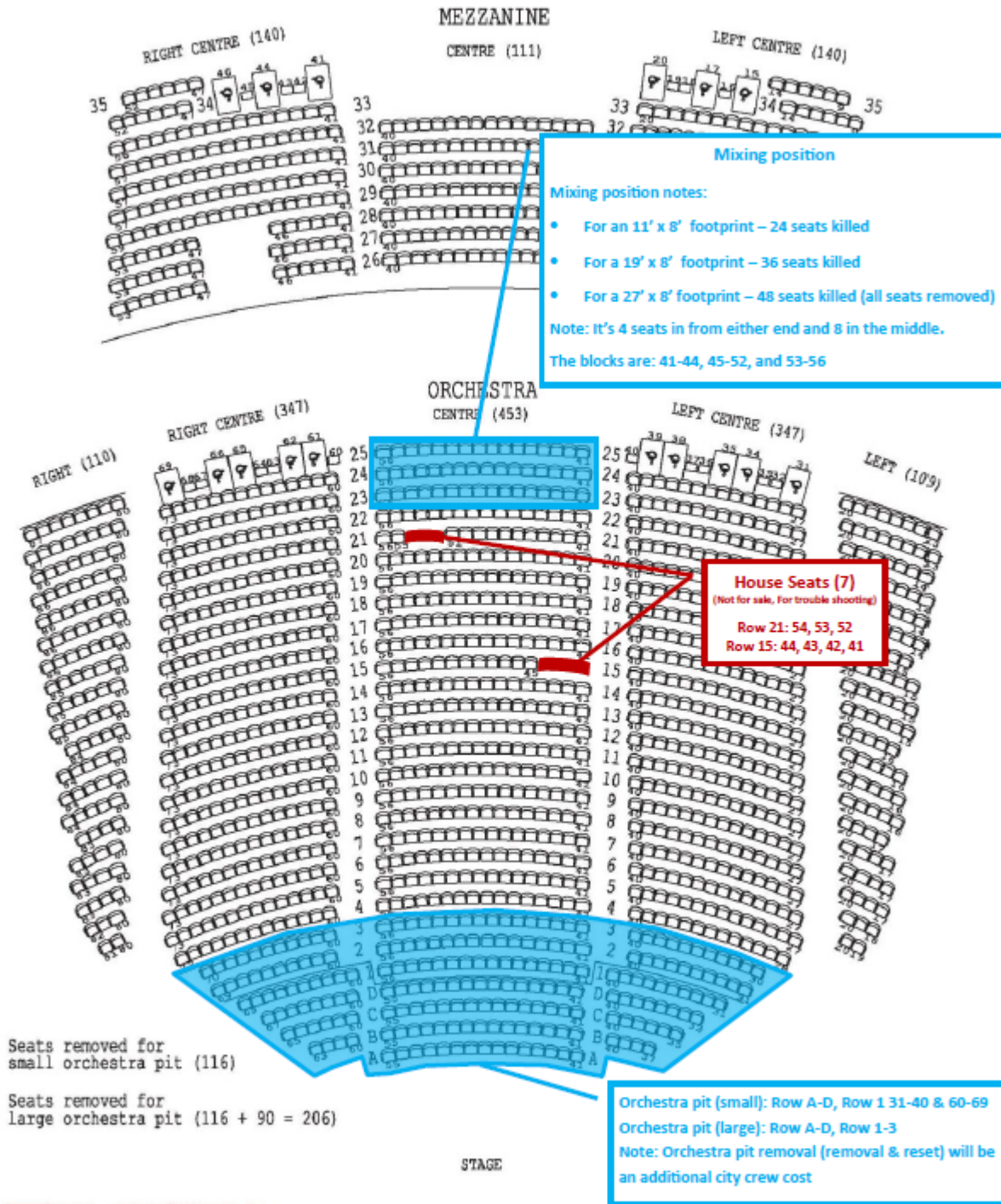
Lobby TV Video:

- If wishing to display content on the lobby TVs - This system is run from Audio Booth and requires the following format:
 - QuickTime ProRes 422 LT 1920x1080 @ 29.97 fps.
 - Preferably on an SD card with no folders

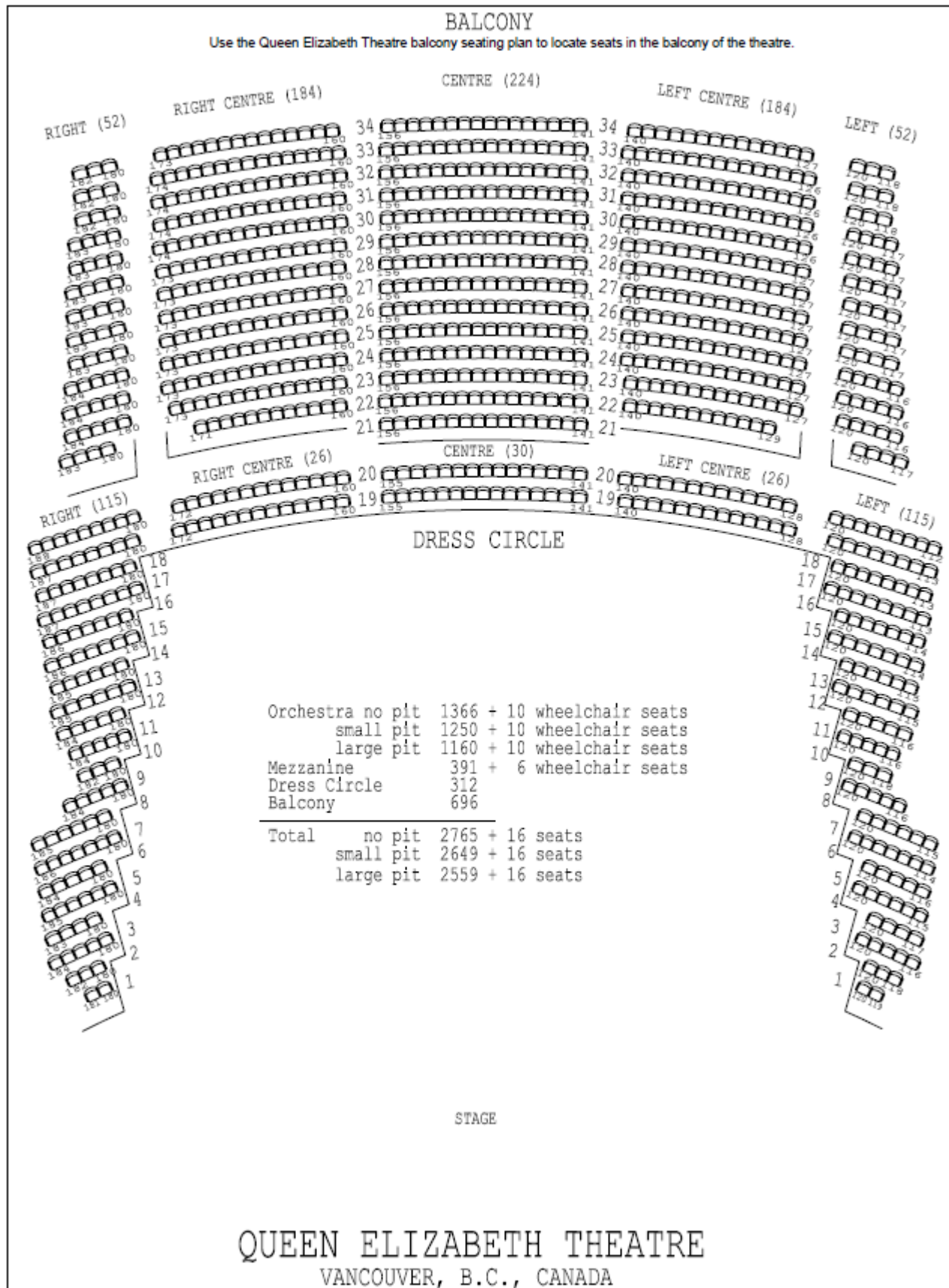
Archival Video Recording:

- If using the KiPro decks to make an archival recording it shall be understood that the recording will start 2-5 minutes before the beginning of the performance and record straight through to the end.
- Upon completion of the recording the footage will be transferred to the client's SSD. The required drive types are included with these tech specs further down.
- If clients do not wish to wait for the file transfer to complete, Head Video will drop the SSD or USB at stage door for pickup.
- If the client does not have a drive with them, we will hold on to the footage on our drives for 2 weeks. After this window of time has passed there is no guarantee the footage will be available.
- It is recommended that clients review the footage they receive ASAP in order to confirm the files have transferred correctly. The 2-week window that we will hold footage shall also apply.

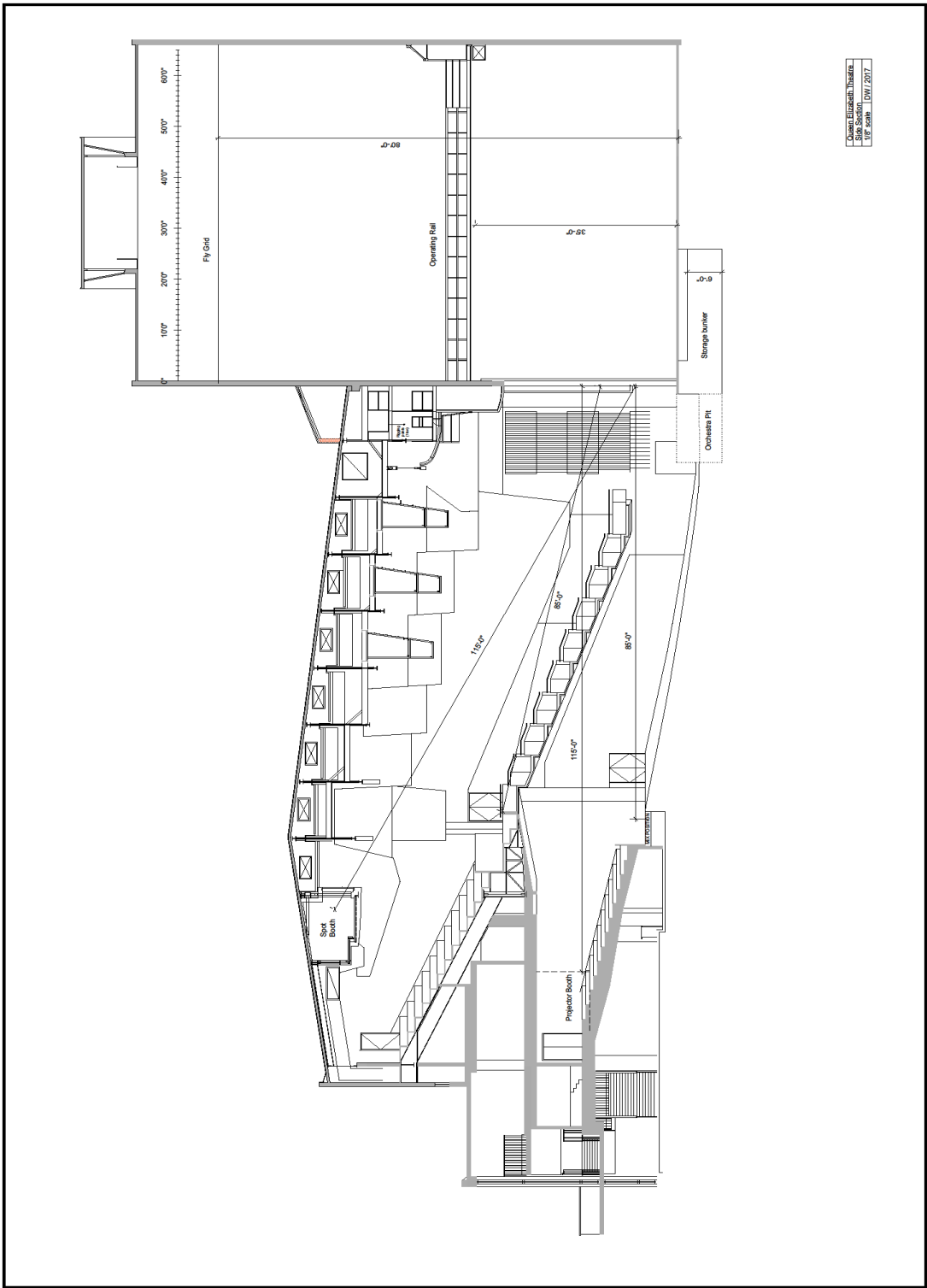
ORCHESTRA & MEZZANINE SEATING - WITH SEAT KILLS



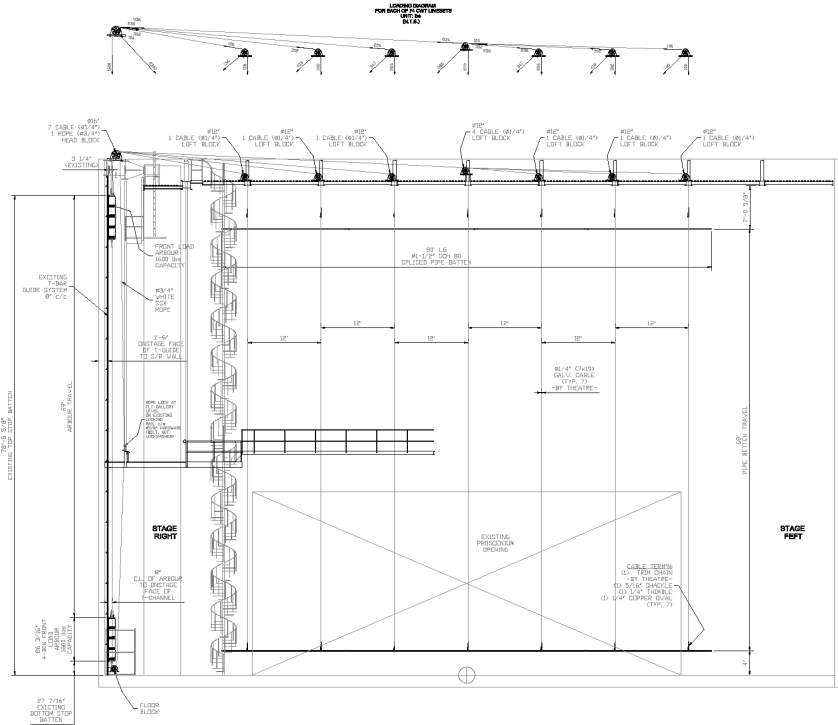
BALCONY & DRESS CIRCLE SEATING MAP



SECTION VIEW



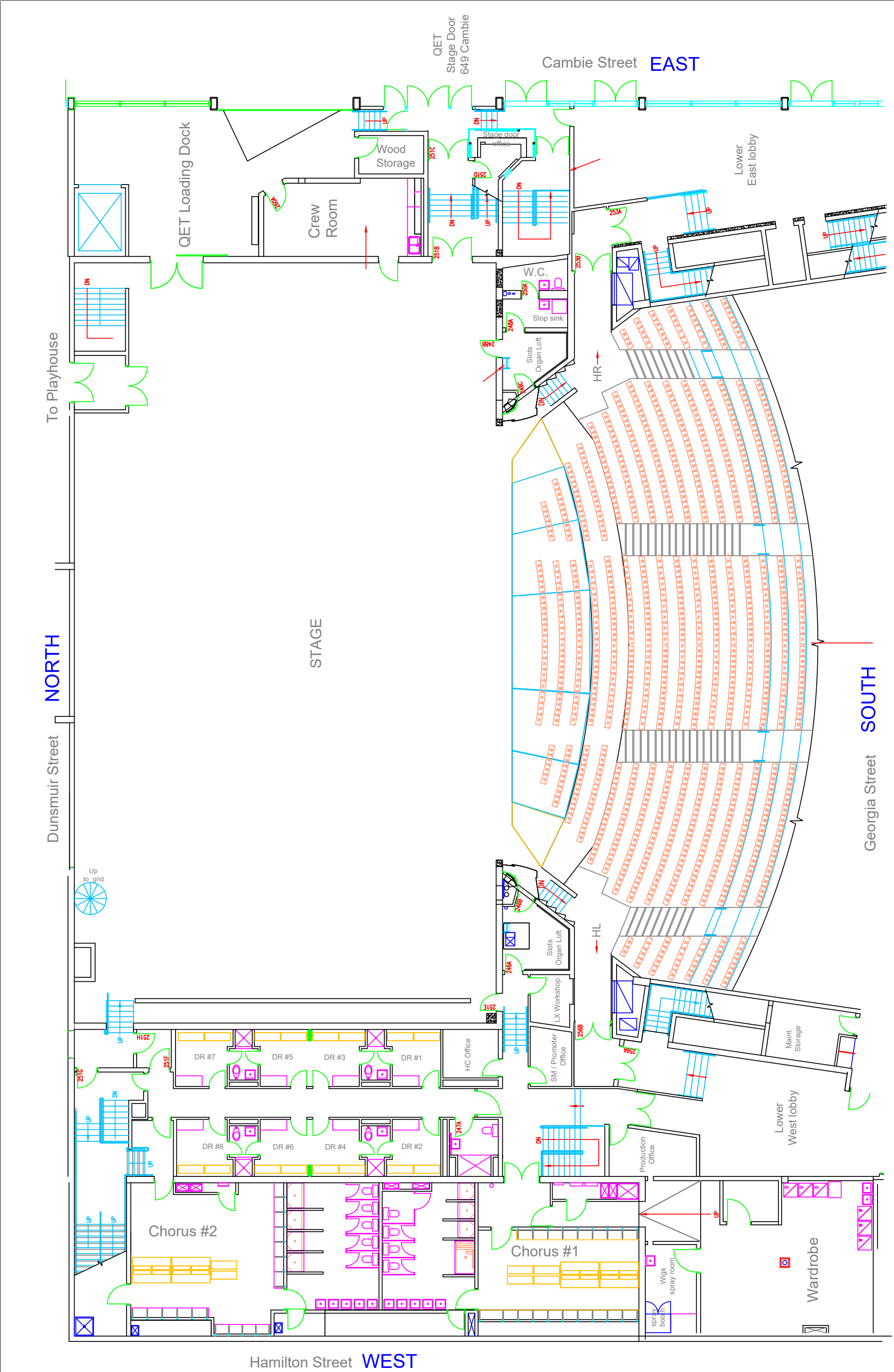
FRONT ELEVATION OF STAGE



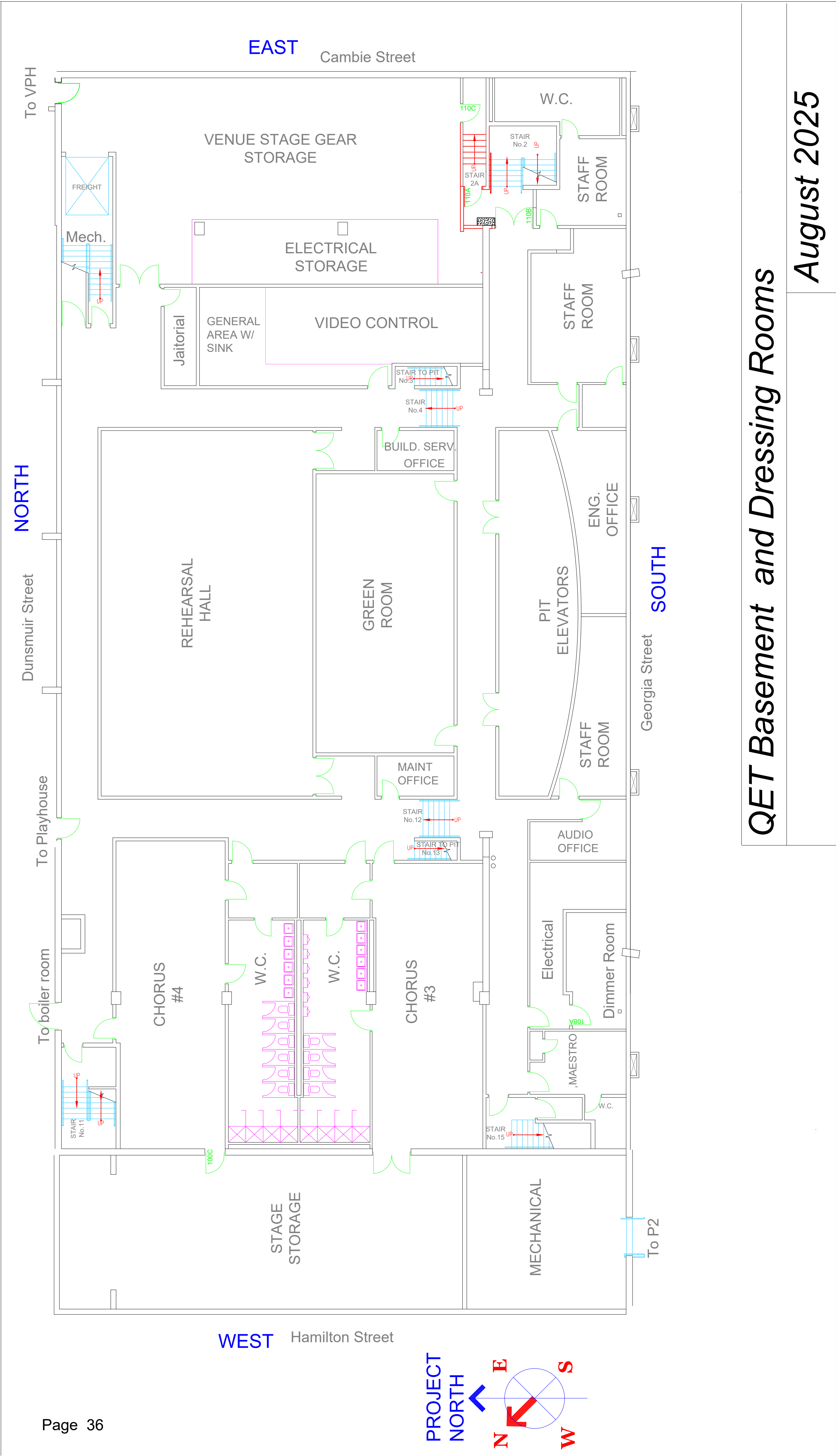
-THIS DWG. REFERS TO (744) STAGE CWT LINESETS @w
FRONT LOAD ARBOUR, AS SHOWN.
-MAIN BUILDING STRUCTURE DIM'S HAVE BEEN VERIFIED ON SITE.
STAGE FLOOR IS DATUM 0.00 FOR ELEVATION DIM'S.
⚠ -MAX. LOAD (JUL) PER LINESET: 1400 lbs.
⚠ -MAX. LIVE LOAD PER LOFT BLOCK: 500 lbs.
⚠ -MAX. ROPELOCK IMBALANCE: 50 lbs.
⚠ -COUNTERWEIGHTS (WEIGHT PER INCH): 121.54 lbs.

FINAL
DIM'S: IMPERIAL

 Quinn Dressel ASSOCIATES STRUCTURAL ENGINEERS	DATE: 10/10/2024 BY: J. DRESSER CHECKED: J. DRESSER DESCRIPTION: STAGE CWT LINESETS @w FRONT LOAD ARBOUR, AS SHOWN. PROJECT: GLE THEATRE Vancouver, B.C.	JOB NO: 24-001 JOB TITLE: STAGE CWT LINESETS @w FRONT LOAD ARBOUR, AS SHOWN. DATE: 10/10/2024 BY: J. DRESSER CHECKED: J. DRESSER DESCRIPTION: STAGE CWT LINESETS @w FRONT LOAD ARBOUR, AS SHOWN. PROJECT: GLE THEATRE Vancouver, B.C.	PROJECT: GLE THEATRE Vancouver, B.C.	PROJECT NO: 24-001 JOB NO: 24-001 JOB TITLE: STAGE CWT LINESETS @w FRONT LOAD ARBOUR, AS SHOWN. DATE: 10/10/2024 BY: J. DRESSER CHECKED: J. DRESSER DESCRIPTION: STAGE CWT LINESETS @w FRONT LOAD ARBOUR, AS SHOWN. PROJECT: GLE THEATRE Vancouver, B.C.	JOB NO: 24-001 JOB TITLE: STAGE CWT LINESETS @w FRONT LOAD ARBOUR, AS SHOWN. DATE: 10/10/2024 BY: J. DRESSER CHECKED: J. DRESSER DESCRIPTION: STAGE CWT LINESETS @w FRONT LOAD ARBOUR, AS SHOWN. PROJECT: GLE THEATRE Vancouver, B.C.



QET Stage and Dressing Rooms	August 2025
Note: Dressing Rooms 4' below stage level	



QET Basement and Dressing Rooms

August 2025