

- HOUSE LIGHT DIMMERS**
- 193 - UNDER BALCONY MINI CHAND.
 - 194 - MAIN HUGE CHANDELIER
 - 195 - UNDER BALCONY WALL SCONCES
 - 196 - NOT USED
 - 197 - BALCONY WALL SCONCES
 - 198+199+200 DOME FRESCO
 - 201 - ORGAN LOFT HIGH CHANDELIERS
 - 202 - NOT USED
 - 203 - NOT USED
 - 204 - NOT USED
 - 205 - BALCONY CEILING PARS/POTS
 - 206 - LED CEILING ARCHITECTURE
 - 207 - UNDER BALCONY POTS
 - 208 - UNDER BALCONY COVE/DOME

ORPHEUM	
CIRCUIT PLOT 2016	
ORPHEUM THEATRE - FOH	
192 DIMMERS + LED UNITS	
48 HOUSELIGHT DIMMERS - ON LINKED SYSTEM	
LX PLOT BY: B. KEITH TECHNICAL DIRECTOR: M. MUIR HEAD CARR: P. MC MANUS DATE: MAY 25, 2016 SCALE:	1 OF 2
	REVISION: 2

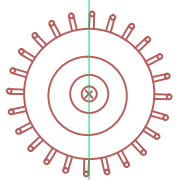
L21-50 (2FERRED TO 4TH ROW PLUG)
 L14-30x2 AC ISOLATED IN SPOT BOOTH AND BACK OF MAIN FLOOR

181-182-183-184

189-190-191-192

185-186-187-188

L21-50
LOCATED 4TH ROW



FAR FOH

- TOP
- 21
 - 22
 - 23
 - 24
 - 25
 - 26
 - 27
 - 28

FOH SL SLOT

- TOP
- 13
 - 14
 - 15
 - 16
 - 17
 - 18
 - 19
 - 20

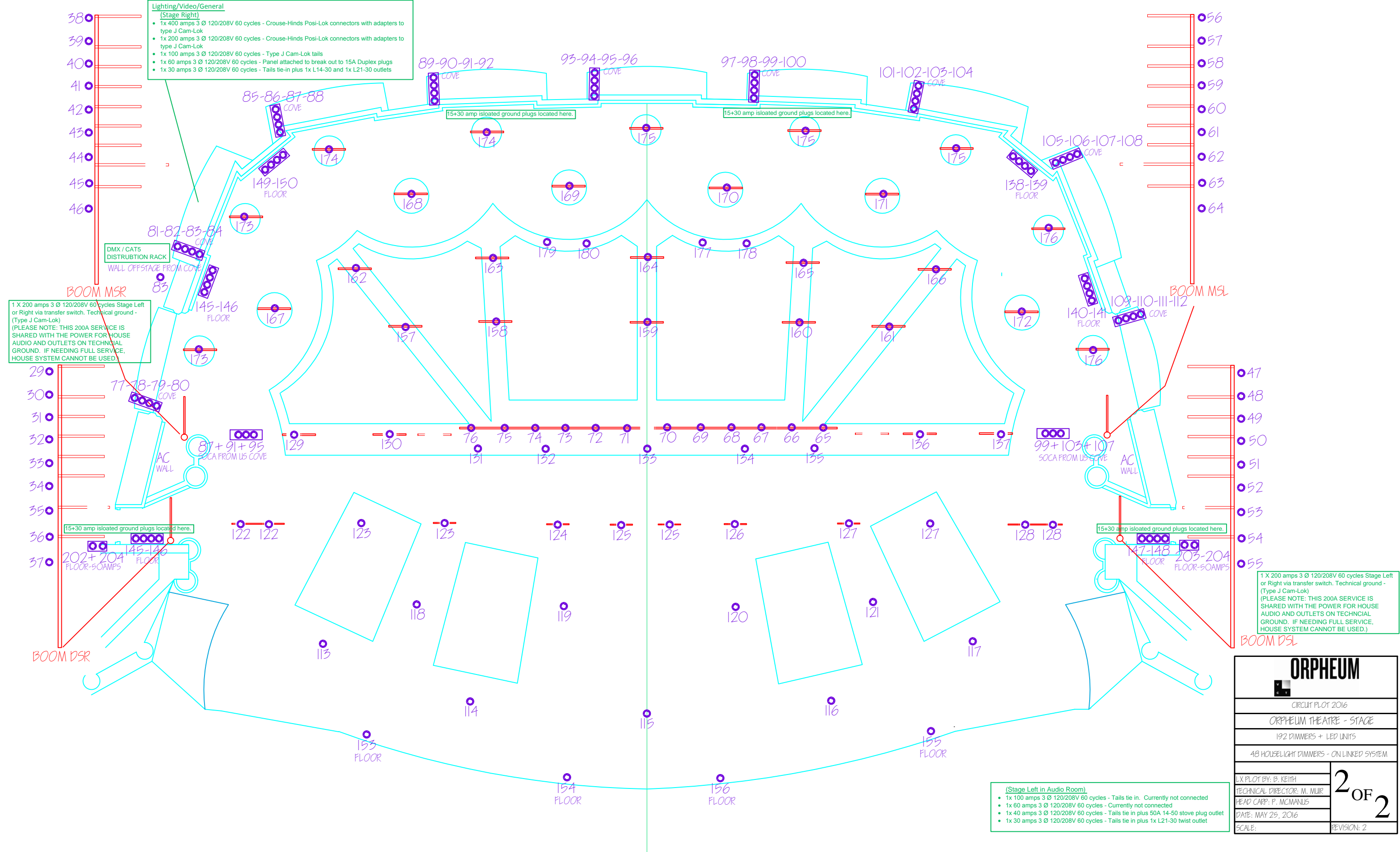
FOH SL SLOT

- 1
- 2
- 3
- 4
- 5
- 6
- 7
- 8
- 9
- 10
- 11
- 12

SPOT BOOTH

Lighting/Video/General
 (Stage Right U.S. in Extension)
 • 1x 400 amps 3 Ø 120/208V 60 cycles - Shared service / Tie in Required

Lighting/Video/General
 (Stage Right)
 • 1x 400 amps 3 Ø 120/208V 60 cycles - Crouse-Hinds Posi-Lok connectors with adapters to type J Cam-Lok
 • 1x 200 amps 3 Ø 120/208V 60 cycles - Crouse-Hinds Posi-Lok connectors with adapters to type J Cam-Lok
 • 1x 100 amps 3 Ø 120/208V 60 cycles - Type J Cam-Lok tails
 • 1x 60 amps 3 Ø 120/208V 60 cycles - Panel attached to break out to 15A Duplex plugs
 • 1x 30 amps 3 Ø 120/208V 60 cycles - Tails tie-in plus 1x L14-30 and 1x L21-30 outlets



1 X 200 amps 3 Ø 120/208V 60 cycles Stage Left or Right via transfer switch. Technical ground - (Type J Cam-Lok)
 (PLEASE NOTE: THIS 200A SERVICE IS SHARED WITH THE POWER FOR HOUSE AUDIO AND OUTLETS ON TECHNICAL GROUND. IF NEEDING FULL SERVICE, HOUSE SYSTEM CANNOT BE USED.)

1 X 200 amps 3 Ø 120/208V 60 cycles Stage Left or Right via transfer switch. Technical ground - (Type J Cam-Lok)
 (PLEASE NOTE: THIS 200A SERVICE IS SHARED WITH THE POWER FOR HOUSE AUDIO AND OUTLETS ON TECHNICAL GROUND. IF NEEDING FULL SERVICE, HOUSE SYSTEM CANNOT BE USED.)

(Stage Left in Audio Room)
 • 1x 100 amps 3 Ø 120/208V 60 cycles - Tails tie in. Currently not connected
 • 1x 60 amps 3 Ø 120/208V 60 cycles - Currently not connected
 • 1x 40 amps 3 Ø 120/208V 60 cycles - Tails tie in plus 50A 14-50 stove plug outlet
 • 1x 30 amps 3 Ø 120/208V 60 cycles - Tails tie in plus 1x L21-30 twist outlet

ORPHEUM	
CIRCUIT PLOT 2016	
ORPHEUM THEATRE - STAGE	
192 DIMMERS + LED UNITS	
48 HOUSELIGHT DIMMERS - ON LINKED SYSTEM	
LX PLOT BY: B. KEITH	2 OF 2
TECHNICAL DIRECTOR: M. MUIR	
HEAD CARP: P. MC MANUS	
DATE: MAY 25, 2016	
SCALE:	REVISION: 2