



VANCOUVER PLAYHOUSE

Technical Information

LOCATION

Administration – Vancouver Civic Theatres, City of Vancouver
Address: 649 Cambie St.
Vancouver, B.C.
V6B 2P1

Switchboard - (604) 665.3050
Fax - (604) 665.3001

Stage Door/Loading Dock address:
601 Cambie Street

Audience Entrance:
Corner of Hamilton Street & Dunsmuir Street (on Hamilton)

• STAFF CONTACTS

Heather Turnbull - Asst. TD (Stage Carpenter)	604.665.3041
Krista Edwardson – Senior Manager Sales	604.665.3051
Ish Guremel – Audience Services Manager	604.665.3372
Miles Muir - Technical Director	604.665.3043

SEATING CAPACITY

Orchestra	487 + 5 Wheel chair
Balcony	181
Totals	668 + 5 Wheel chair

LOADING AREA:

Loading Bays: - 1bay at right angles for 40' (12.19m) tractor trailers (if tractor is dropped)

Loading Doors: - 20' wide x 13' high (6.01m x 3.96m)

Loading Dock: - 3.5' (1.07m) high above street level

Dock Access to Stage: - Through two large 7' wide x 12' high (1.83m x 3.66m) doors, opening in centre of upstage wall from loading dock on Cambie Street.

Parking Restrictions: - No overnight parking allowed. All trucks must maintain at least 6' clearance from fire exit doors.

STAGE FLOOR

- Edge grain fir (black masonite on top) except stage apron, which is maple.
- Six removable trap sections exist downstage.

FLYING CAPABILITIES

Max. Flying Height (except first electric): - 42' 6" (12.95m)

Counter Weight System (single purchase): - 45 lines, including 2 for side stage lighting ladder system (T-bars are on 6" centres)

Pipe Length: - 56' (17.07m); 17/8" (4.76cm) O.D.

Free Pipes: - 23 (plus 19 easily cleared)

Arbour Capacity of Each Pipe: - 700 lbs (317.5kg)

Lock Rail: - Floor level stage right

PLAYHOUSE THEATRE LINESET SCHEDULE

HOUSE CURTAIN IS A FIXED TRACK UNDER THE PROSCENIUM

HOUSE ELECTRIC TRIM @22' HOUSE BORDER TRIM @ 18'

0 PIT PIPE	2'6"D.S. of PIT LINE			
PIT LINE	0' 0"	22 MIDSTAGE BLACK	16' 8"	FLAT
HOUSE CURTAIN	TRAVELER ONLY	23	17' 2"	
FIRE CURTAIN	2' 9" / 3' 9"	24 TRACK ONLY	17' 8"	
1 BORDER	4' 2"	25 5th ELECTRIC	18' 6"	
2 1st ELECTRIC	5'	26	19' 2"	
3	6' 2"	27 BORDER	19' 8"	
4	6' 8"	28 LEG	20' 2"	40' OPEN
5	7' 2"	29	20' 8"	
6 BORDER	7' 8"	30	21' 2"	
7 LEG	8' 2" 40' OPEN	31 6th ELECTRIC	22'	
8	8' 8"	32	22' 9"	
9 2nd ELECTRIC	9' 6"	33	23' 3"	
10	10' 2"	34 7th ELECTRIC	24'	
11 OLEO	10' 8" FULLNESS	35	24' 9"	
12	11' 2"	36 BORDER	25' 3"	
13	11' 8"	37 LEG	25' 9"	40' OPEN
14 3rd ELECTRIC	12' 2"	38 LADDER		
15	12' 8"	39 LADDER		
16	13' 2"	40	26' 3"	
17 BORDER	13' 8"	41 CYC LIGHTS	27'	

18 LEG	14' 2"	40' OPEN	42	28' 3"
19	14' 8"		43	28' 9"
20 4th ELECTRIC	15' 6"		44 CYC	32'
21	16' 2"		45 BLACKDROP	32' 8"

STAGE DIMENSIONS

Proscenium Opening (Fixed): - 47'6" w x 18'7" h (14.78m x 5.67m)
Curtain Line to Rear Wall: - 32'6" (11.13m)
Curtain Line to Orchestra Pit Line: - 1'6" (0.457m)
Curtain Line to Front of Apron: - 11'6" (3.51m) with orchestra pit up
Centre Stage to Stage Left Wall: - 35'8" (9.60m)
Centre Stage to Stage Right Wall: - 38' (11.58m)
Free Height Stage Right Wing Space: - 45' (13.72m)
Free Height Stage Left Wing Space: - 45' (13.72m)
Height Stage Floor to Underside Grid: - 45' (13.72m)

STAGE DRAPES

Main Curtain:

Black velour Mounted within proscenium arch
Operates as traveller only. 100% box pleats

Velour Stage Masking:

3 - Pairs Black Legs; 22' high x 12' wide (6.71m x 3.66m) non-pleated with bottom chain pocket, equipped with removable return arms).

1 - Pair Black Legs; 22' high x 8' wide (6.71m x 2.44m) non-pleated

5 - Black Borders; 8' deep x 56' wide (2.44m x 17.07m) non-pleated with bottom pipe pocket.

2 - Black Backdrops; 24' high x 32' wide (7.32m x 9.75m) non-pleated with bottom pipe pocket.

Scrim:

1 - Black; 60' high x 24' wide (18.29m x 7.32m) sharkstooth.

Cyclorama:

1 - Off-white PVC front / rear projection screen with bottom pipe pocket 24' high x 56' wide (18.29m x 7.32m).

Black Travellers:

2 – full stage two piece travellers mounted on tracks; 20' high x 56' wide (6.1m x 17.07m).

SUPPLIMENTARY EQUIPMENT

Risers:

Complement consists of 8 - 4" x 8" (1.22m x 2.44m) sections. Sections available in 8" (20.32cm), 16" (40.64cm) and 24" (60.96cm) heights. Additional smaller sections also available.

Get-away Stairs:

4 - 16" high (2 @ 2' wide, 2 @ 4' wide)

Speaker's Floor Lectern:

1 - 3' high x 2' wide; can be equipped with reading lamp and microphone mount.

Conductor's Podium:

1 - 12" high

Music Stands:

80 - Manhasset Model; available with lights

Chairs:

100 - black musician chairs with padded seats and backs, 200 brown chairs not padded, 120 burgundy chairs with padded seats and backs.

Piano:

1 - Steinway 9' (2.74m) Grand Model D. Tuning cost payable by lessee.

1 - Yamaha Model WX15 (48" tall)

NOTE: THE ABOVE EQUIPMENT IS SHARED BETWEEN TWO THEATRES AND IS SUBJECT TO PRIOR RESERVATION.

ORCHESTRA PIT / SEMI-CIRCULAR THRUST STAGE

Radius: - 17' 7" (5.36m)

Width (down stage to up stage): - 10' .75" (3.07m)

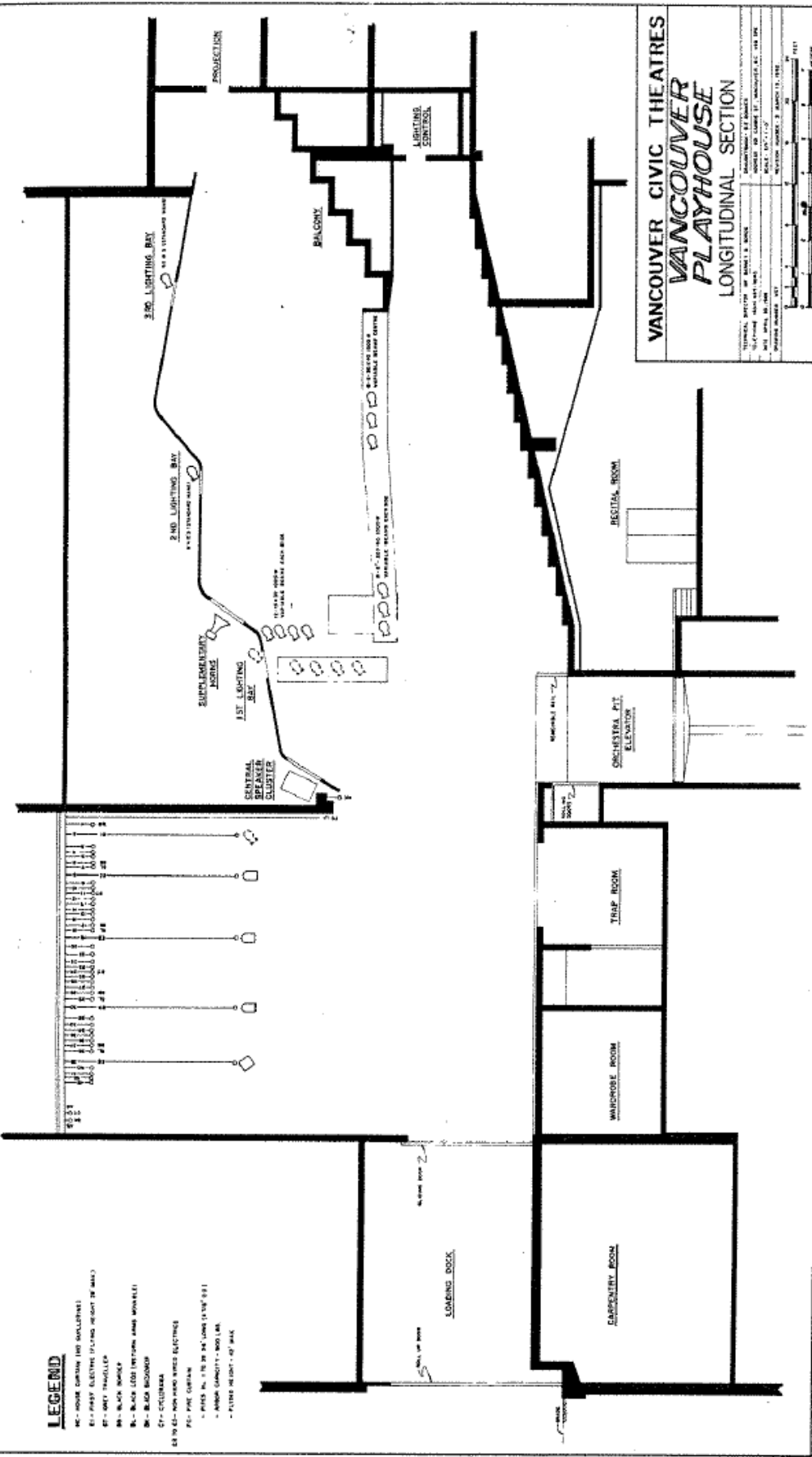
Length (down stage to up stage): - 31' 9" (9.68m)

Depth (adjustable hydraulically): - 12' (3.66m) maximum below stage floor

CLUBSHE 60 P.W. (CONSTRUCTION DIMENSIONS)

LEGEND

- M- MOUNT CURTAIN (NO HOLLOWETS)
- E1 - PLYST ELECTRIC PLATING HEIGHT OR MAIL
- E2 - METY TRAVELLER
- M- BLACK WINGS
- W- BLACK LOOS EXTENSORS AND WINDSET
- M- BLACK BOARDS
- C1 - COLLAR
- E3 - NON-WORKING ELECTRIC
- F1 - PVC CORNER
- PITCH IN 1:16 OR 1:24 (SEE PLAN) 6"11
- WINDS CARRYING - 3000 LBS.
- PLATE HEIGHT - 48" MAX.

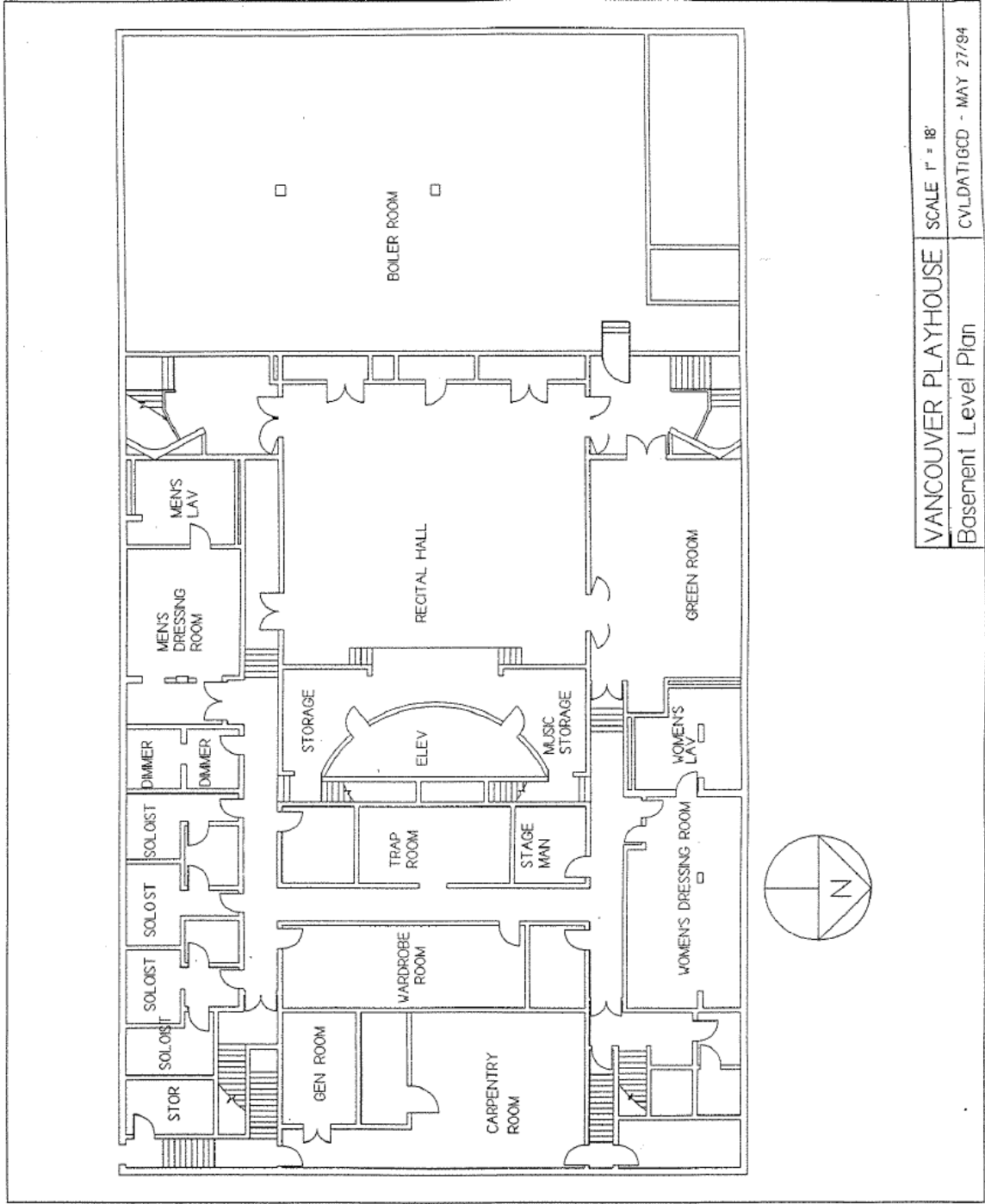


VANCOUVER CIVIC THEATRES
VANCOUVER PLAYHOUSE
 LONGITUDINAL SECTION

ARCHITECT - ROYAL L. JONES
 1055 BROADWAY EAST, VANCOUVER, B.C. V6B 1R6
 ARCHITECTURE AND INTERIORS
 PROJECT NO. 1402
 DATE OF ISSUE - 2 JANUARY 1983

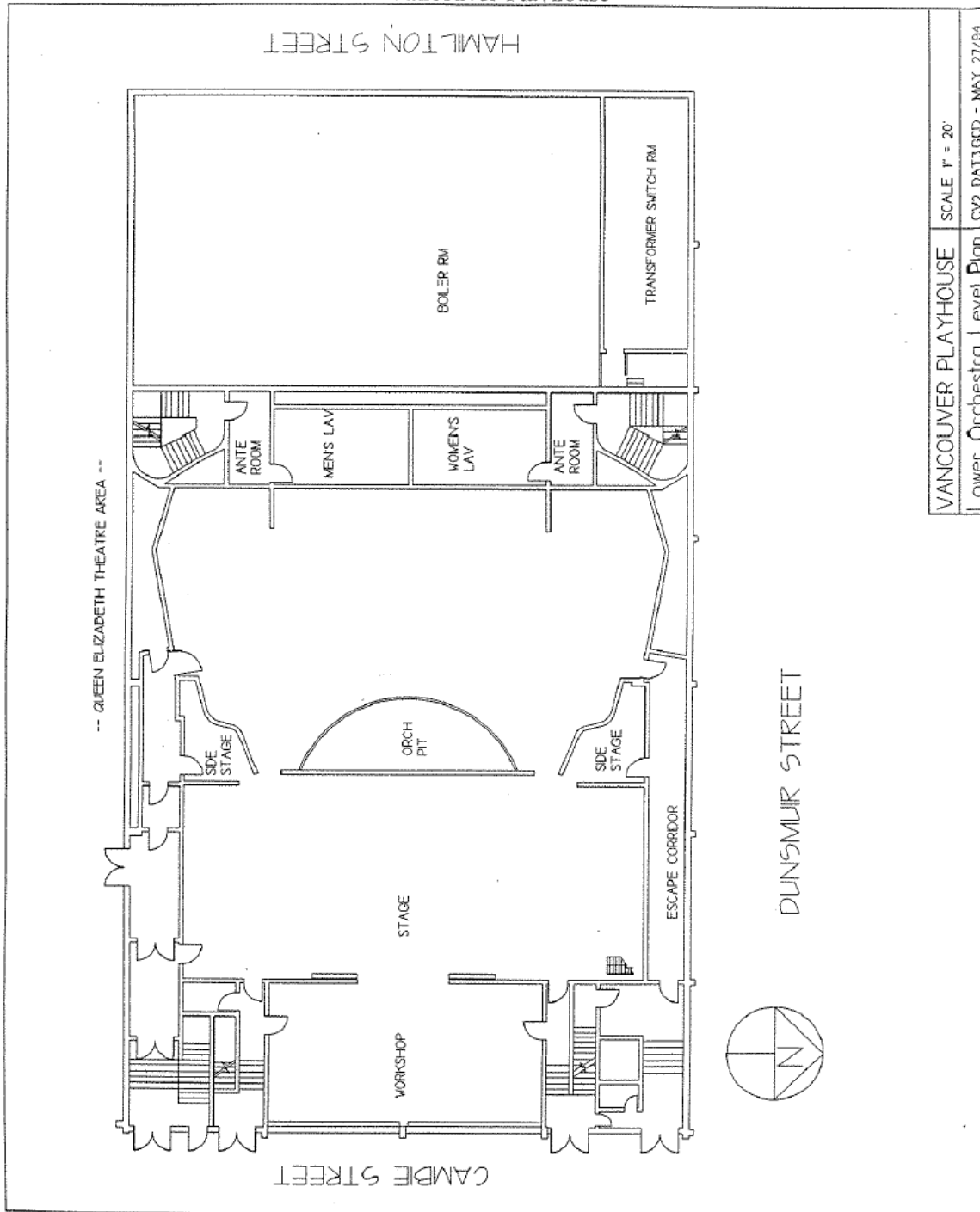
ENGINEERING REFERENCE: WA 94 SHEET 3

1:16" = 1'

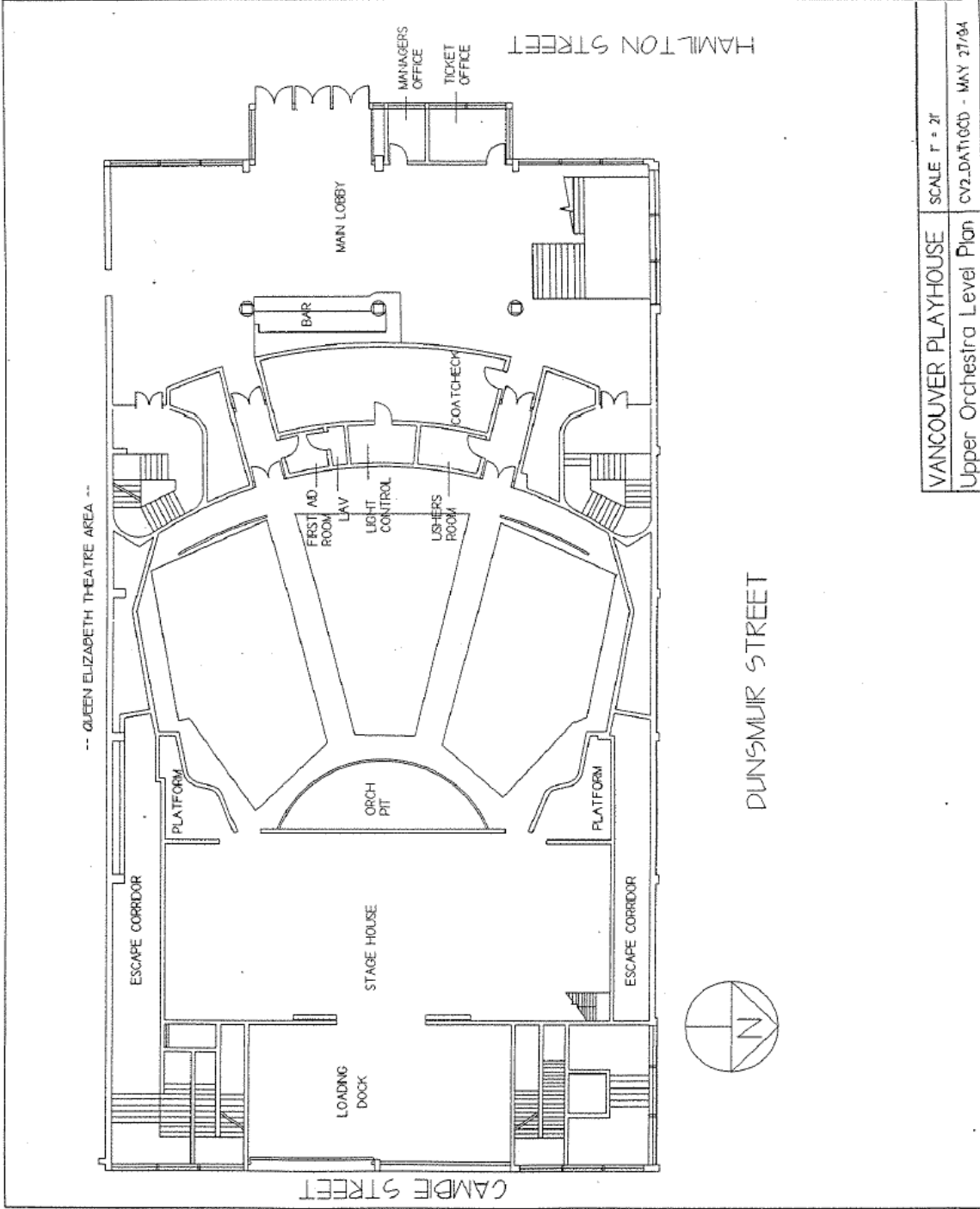


VANCOUVER PLAYHOUSE
Basement Level Plan

SCALE 1" = 18'
CVL/DAT/GCD - MAY 27/84

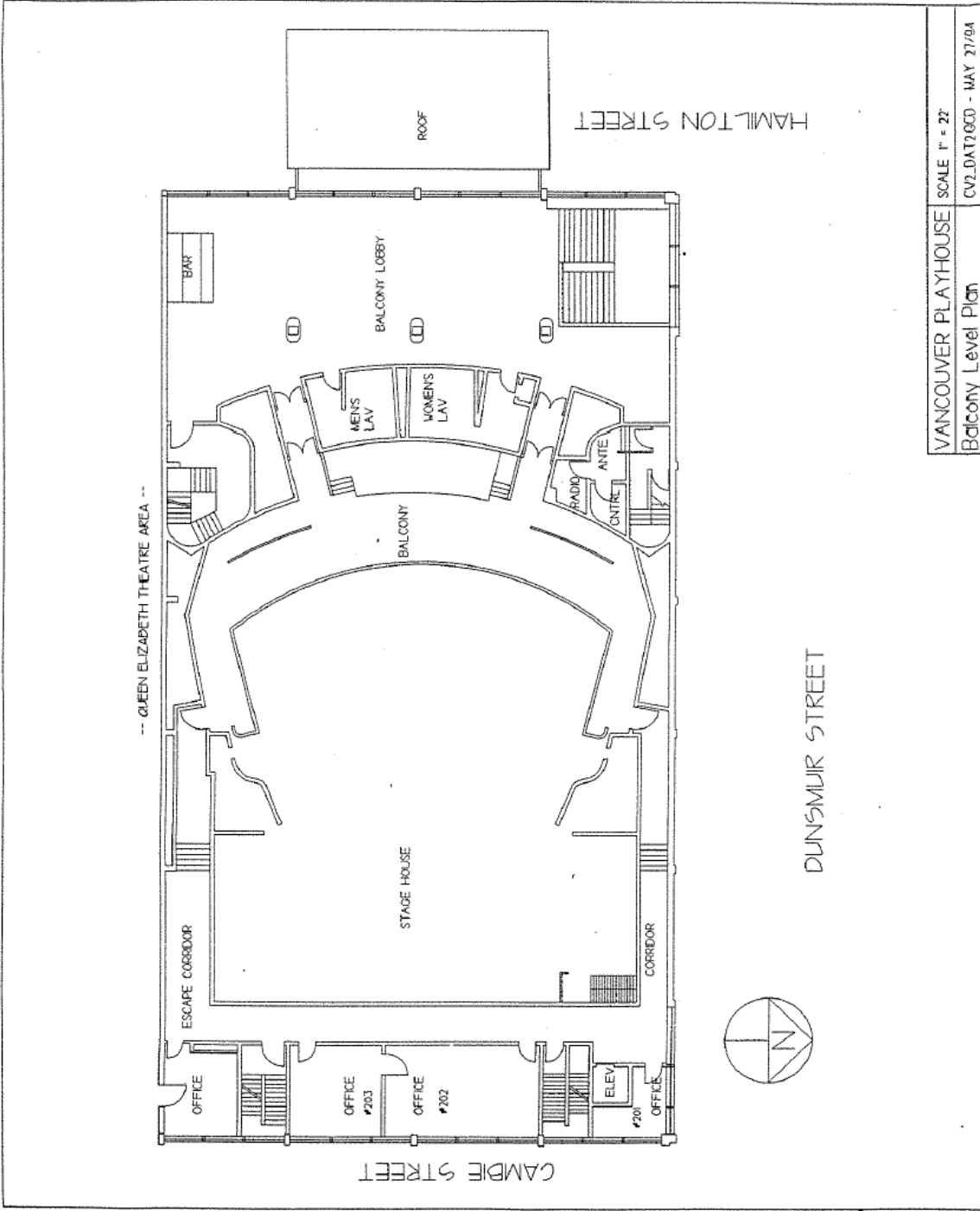


VANCOUVER PLAYHOUSE	SCALE 1" = 20'
Lower Orchestra Level Plan	CV2_DAT3.GCD - MAY 27/94



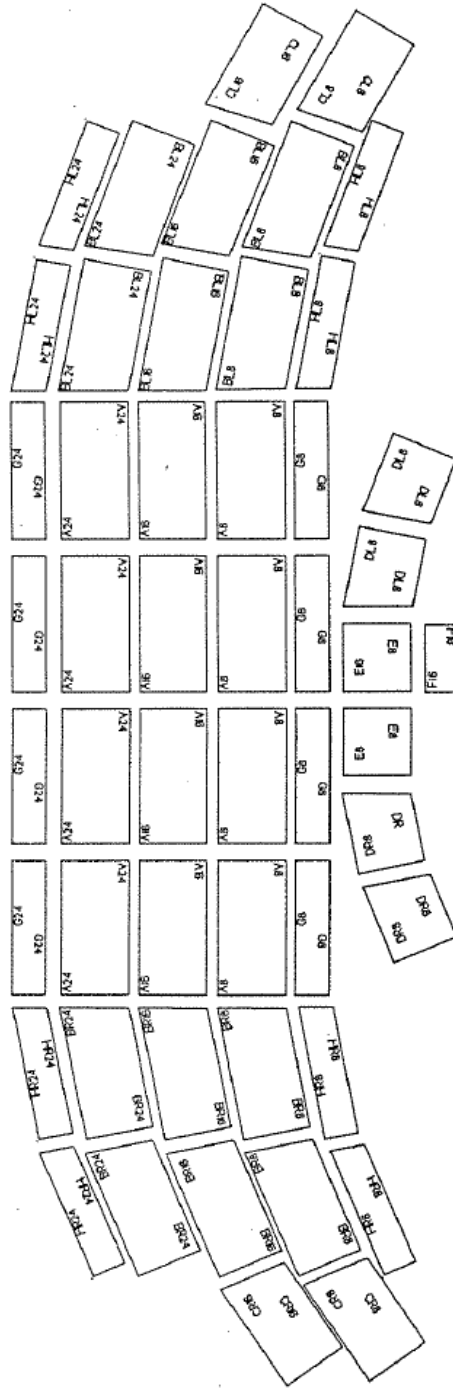
-- QUEEN ELIZABETH THEATRE AREA --

VANCOUVER PLAYHOUSE	SCALE 1" = 2'
Upper Orchestra Level Plan	CV2-DAT106D - MAY 27/84



VANCOUVER PLAYHOUSE	SCALE 1" = 22'
Balcony Level Plan	CV2_DAT2000 - MAY 27/04

NOTE -- NUMBERS FOLLOWING LETTERS INDICATE HEIGHT IN INCHES



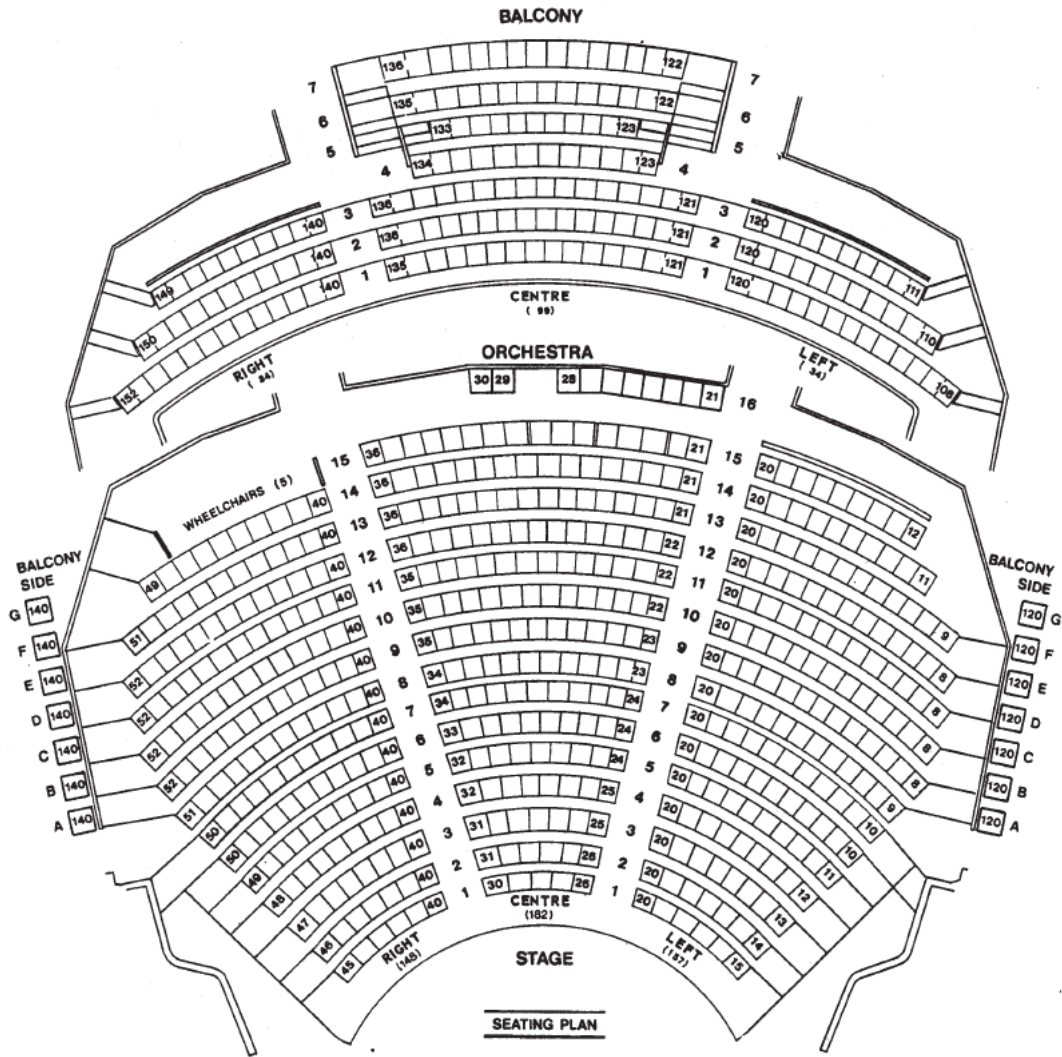
NOTE -- AVAILABILITY SUBJECT TO PRIOR RESERVATION

- A's - 4' x 8'
- B's - 8' x 7'-2" x 4' wide
- C's - 6' x 6'-10" x 4' wide
- D's - 4' x 4'-10" x 4' wide
- E's - 4' x 4'
- F's - 2' x 4'
- G's - 2' x 8'
- H's - 8' x 7'-7" x 2' wide

OET & PLAYHOUSE RISER COMPLIMENT SCALE: 1" = 9'

Drawn By: Barney B. Saros

OET_COMP.GCD - MAY 29/97



THE VANCOUVER PLAYHOUSE
VANCOUVER, B.C., CANADA

ORCHESTRA	487 plus 5 wheelchair spaces
BALCONY	181
TOTAL	668 plus 5 wheelchair spaces

(37 additional temporary seats may be added
in the orchestra pit area - subject to prior approval)

AC POWER

- 400 amp, 3 Phase, 120/208V, 60 Cycle. Upstage right or upstage left.

LIGHTING

Lighting Console:

ETC ION dual consoles w/ sub wing, full tracking backup, 388 dimmer lighting control system in Front of house booth. (382 - 2.4k dimmers, 6 - 5k dimmers in a dimmer per circuit system)

All circuits are patchable, in any sequence, to all dimmers.

DMX-512 protocol.

For detailed Lighting info, see the Lighting document on our website or contact us.

Vancouver Playhouse Inventory

Source four 10°	2 total	HPL	2 used	
Source four 14°	4 total	HPL	4 used	
Source four 19°	28 total	HPL	21 used	
Source four 26°	64 total	HPL	43 used	
Source four 36°	63 total	HPL	46 used	
Source four 50°	22 total	HPL	18 used	
Spare barrels (included in totals): 19° - 1, 26° - 15, 36° - 4				
Par Rack o' six	12	FFS	1k	(wide)
Par 64	24	FFR	1k	(med)
Fresnels 3380	50	BTR	1k	
Altman 360Q 6×16	44	BTP	.75k	
Altman 360Q 6×12	80	BTP	.75k	
6×12 w/ iris	7	BTP	.75k	
Altman 360Q 6×9 30	BTP	.75k		
6×9 w/ iris	4	BTP	.75k	
Cyc units of two cells	12	FFT	1k	
Ground row of four cells	11	FHM	1k	
Mini strips (3 cir) 4	EYC			
Mizar	10	FEV	.3k	
MR-16 spots	30	MR-16 75w		
Beam Projector	6	BTP	.75k	
Scoops	12	Mogul	.3k	
VL 1000 ts	8		1k	
2K Fresnels	20			
i-Que mirrors	7			
4 pin pwr sply	6			
opto splitter	2			
gobo rotators	6			
scrollers	15	'christie B scroll'		
	3	broadway i-que w/ brodie scroll		
Dmx iris	6			
Drop in iris	6			

Floor Booms:

12 - 12' high or 20' high with arms. Availability subject to prior reservation.

Manlift:

1 - "Handy Herman" with 24' (max. height) working platform.

NOTE:

- ALL CIRCUITS TERMINATE IN 20 AMP 3 PIN TWIST LOCK PLUGS.

- SUFFICIENT 12/3 CAB TIRE CABLE, EQUIPPED WITH 3 PIN 20 AMP TWIST LOCK PLUGS AVAILABLE TO SERVICE THE ABOVE ELECTRICAL EQUIPMENT.

- ALL LAMPS ARE 3200 DEGREES KELVIN COLOUR TEMPERATURE.

- A LARGE STOCK OF USED ROSCOLUX COLOUR FILTERS IN CARDBOARD FRAMES IS MAINTAINED AND AVAILABLE FOR USE; HOWEVER, THE THEATRE DOES NOT ACCEPT RESPONSIBILITY TO MEET ANY PARTICULAR DEMANDS.

PROJECTION

Discuss with theatre staff.

AUDIO**Sound console: Yamaha M7CL**

24 - input modules (+ 4 stereo)

Central Loudspeakers:

2 Meyer MSL 2A.

L / R Loudspeakers:

4 Meyer MSL 2A.

Surround Sound Speakers

8 - JB11 model H3-40 (6 below balcony; 2 above)

Portable Speakers

4 – EV 1202 Wedge Speakers. Plus assorted other monitor speakers. *(Availability subject to prior reservation)*

Hearing Assist System:

Sennheiser Infrared Mono-System with 30 receivers available

Audio Source / DSP / Matrix:

Richmond Sound Design AudioBox w/SFX.

Rack Mounted Equalizers

1 - 27 band Klark-Teknik DN 27A graphic

1 - Stereo, 30 band Klark-Teknik DN 30/30

Delay

Urei 927 (committed to supplementary balcony speakers)

Limiter

1 - Urei 1176 LN (patchable)

2 - 166A DBX

Reverb

AKG BX10, 2 channel (assignable by rack patching)

Intercom:

Two (2) Channel Clear-com to all operating stations with master station at stage manager's location (down stage right). Portable stations are available.

Paging & Program

Complete program interrupt system to lobbies, dressing rooms, rehearsal rooms, wardrobe room, hallways etc. from stage manager station down stage right.

Microphone Lines:

- 19 - Upstage left wall
- 2 - Downstage left
- 2 - Downstage right (plus 2 line sends)
- 2 - Sound room
- 2 - Announce booth
- 1 - Radio room
- 1 - Projection booth

All microphone lines terminate on stage to 3 pin XLR connectors.

Internal Telephone:

Aiphone system to all operating stations including main lobby, with master station at stage manager's location (down stage right).

Speaker Lines

- 6 - FOH ceiling catwalk left
- 6 - FOH ceiling catwalk right
- 10 - upstage left wall
- 2 - upstage right wall

Ceiling lines exist to allow temporary wiring to surround /"effect" speaker positions in the auditorium.

All speakers in the theatre, except for main cluster system, are on an 8 ohm line.

All monitor lines terminate on stage to 3 pin "P" type connectors.

Microphones (only part of inventory listed here)

- 1 - Electrovoice RE11
 - 4 - Electrovoice RE10
 - 1 - RE15
 - 8 - Shure SM58
 - 4 - Shure SM57
 - 6 - AKG 451/CK1 with 10dB pad.
 - 4 - AKG CKE shotgun adapters.
 - 6 - Neumann KM184
 - 6 – channels of Shure UHF wireless – can be either lavs or handheld
- Miscellaneous: Assortment of stands, cables, splitter boxes, 2 premixers, direct boxes, adapters, etc.

Availability of above subject to prior reservation.

DRESSING ROOMS, ETC

Located one floor below stage

4 - Star dressing rooms

1 - Female chorus dressing room (21 person capacity)

1 - Male chorus dressing room (21 person capacity)

All equipped with mirrors, make-up lights, showers, toilets, sinks and costume racks.

RECITAL ROOM

- Located below auditorium

- Ready access to backstage dressing rooms and lobby.

- Size: 40' x 42' (12.2m x 12.8m)

- Has small stage 8' deep x 13' wide

- Functions as rehearsal room with upright piano included

- Availability subject to prior reservation

WARDROBE ROOM

- Irons, ironing board, steamer, washer and dryer.

- Located one floor below stage.

GREEN ROOM

- A joins Recital room

- Ready access to both backstage dressing rooms and lobby

- Size: 30' x 21' (9.15m x 6.4m)

- Has small kitchenette and is equipped with coffee tables and lounge chairs

- Availability subject to prior reservation.

USE OF HAZARDOUS MATERIALS IN VANCOUVER CIVIC THEATRES

Government of Canada legislation requires that the use of "controlled" products in our theatres shall comply with the rules under WHMIS (Workplace Hazardous Materials Information System). Controlled products include:

(1) Compressed Gas

(2) Flammable and Combustible Material

(3) Oxidizing Material

(4) Poisonous and Infectious Material

(5) Corrosive Material

(6) Dangerously Reactive Material

WHMIS regulations require that:

(a) Anyone using controlled products in the workplace must be informed as to its safe storage, handling, use, and disposal.

(b) All containers of controlled products must have warning labels attached that meet regulation requirements.

(c) A MSDS (Material Safety Data Sheet) for any controlled product must be available and be maintained in the immediate work area.

Some substances such as explosives, radioactive materials, and tobacco are covered under separate regulations. Smoking in our theatres, for example, is restricted under our Civic Bylaws to designated areas only within our building perimeter.

OCCUPATIONAL HEALTH & SAFETY REGULATIONS

ASBESTOS IN THE WORKPLACE

Government of British Columbia legislation and regulations prohibit the use of asbestos materials in the workplace where such use would have the potential risk that asbestos particles could be inhaled into workers' lungs. The authority for the establishment of the Industrial Health & Safety Regulations is found in Section 71(1) of the Workers' Compensation Act. Further, Section 75(2) of the Act states: "Every person who contravenes or fails to comply with a regulation or order under Section 71 commits an offense and is liable on conviction to a fine not exceeding \$10,000, or to imprisonment not exceeding 3 months, or to both." [This amount has changed with the addition of C.P.I. increases over the years and now is roughly \$32,000 (January 1992).] These regulations, in particular, PROHIBIT THE USE OF ASBESTOS CLOTH AND ASBESTOS COVERED ELECTRICAL CORDS INCLUDING LAMP EXTENSIONS ON STAGE LIGHTING EQUIPMENT. In order to fully comply with these regulations, such hazardous materials SHALL NOT, under any circumstances, be admitted onto the Queen Elizabeth Theatre, Orpheum, or Vancouver Playhouse premises.

Please advise your appropriate technical staff and/or equipment rental companies of the above, and make them aware of the severe government penalties involved for failure to comply.

October 16, 2017 edit