



# ANNEX

# Technical Information

---

The Annex is fully equipped with sound and lighting for theatrical, dance, or other productions. Basic technical support is included in the Venue rental. Additional tech support required for the set-up, operation, and take down of events will be determined in consultation with Venue technical staff and is billable to the lessee

## **STAFF CONTACTS:**

Paul McManus – Sr. Manager, Production  
Miles Muir – Technical Director  
Levi Pease – Venue Technician  
General Booking Enquiries -

604-665-3024  
604-665-3043  
778-968-7382  
604-665-3050

[paul.mcmanus@vancouver.ca](mailto:paul.mcmanus@vancouver.ca)  
[miles.muir@vancouver.ca](mailto:miles.muir@vancouver.ca)  
[levi.pease@vancouver.ca](mailto:levi.pease@vancouver.ca)  
[vctbooking@vancouver.ca](mailto:vctbooking@vancouver.ca)

## **DIMENSIONS AND SEATING**

- 146-seat retractable automatic seating system on the Main Level
- 47-seats in the Gallery
- 50' wide x 70' long x 34' high
- Stage area with bleacher seating is 43' wide X 30' 6" deep

## **AUDIO**

- Two (2) Meyer UPQ-1P portable loudspeakers with stands
- Two (2) Meyer UM-100P portable stage monitors
- Two (2) Meyer UM-1P portable stage monitors
- Two (2) Meyer 650-R2 Subwoofer loudspeakers
- Two (2) Mackie SRM 150 Active speakers
- One (1) Avid S3L digital mixing console with standard plug-in package
- One (1) Mac-mini with Protools installed for multi-track recording
- One (1) Allen and Heath QU-16 digital mixing console
- One (1) Meyer Galileo 408 loudspeaker processor

## Microphones and DI Boxes

- Four (4) Shure SM58
- Four (4) Shure SM57
- One (1) Shure VP88
- Four (4) AKG C451
- One (1) Earthworks FMR500HD
- Four (4) Radial JDI Passive DI
- One (1) Radial PC DI
- One (1) Cable Factory PC DI

## Wireless Microphones

- One (1) Countryman B6 Lav
- One (1) Shure Axient AD4Q Quad Receiver
- Four (4) AD2/SM58 Handheld Transmitter
- Four (4) AD1 Bodypack
- Four (4) Oscar Sound Technologies HM701 Headset Microphones (T4F connector)
- Four (4) Oscar Sound Technologies TL40 Lavalier Microphones (T4F connector)
- One (1) Shure ULXD4 Single Channel Receiver with One SM58 Handheld Transmitter (portable/lobby)

## Mic Stands

- Six (6) Tall Tripod boom stands
- Four (4) Short Tripod boom
- Four (4) Tall round base straight stands

## **VIDEO**

- One (1) Draper Premier 220" diagonal (108" x 192" viewing area) 16 x 9 motorized front projection screen
- One (1) AV Stumpfl 13'6" x 24' fast fold front projection screen
- One (1) Christie Digital HD6K high definition projector, 3-chip DLP, 6500 lumens
- One (1) Folsom Image Pro 2 video switcher
- One (1) 25' 5-conductor video snake
- One (1) Sony BRC-Z700 high definition PTZ camera
- One (1) Macbook Pro Laptop computer for audio/video playback

## **HEARING ASSISTANCE**

- One (1) Listen LT-82 transmitter
- Four (4) Listen LR-42 receivers with stethoscope headphones
- Four (4) Listen LR-44 receivers with inductive neck loop
- One (1) Shure MX202B/C hanging microphone for above
- Four (4) Listen LR-44 receivers with inductive neck loop
- One (1) Shure MX202B/C hanging microphone for above

## **INTERCOM**

- One (1) Clear-Com CS-702 master station, 2 channel
- Four (4) Clear-Com 501 Single Channel belt packs
- Four (4) Clear-Com CC-95 headsets for belt packs

## **LIGHTING**

- One (1) ETC ION Lighting Control Console – 1000 channels / 1024 Outputs
- One (1) ETC ION Universal Playback Wing – 2 x 20 faders
- Two (2) 19" LCD Monitors
- Fourteen (14) ETC Source Four Ellipsoidal Luminaires – 26 degree – 575w
- Seven (7) ETC Source Four Ellipsoidal Luminaires – 36 degree – 575w
- Four (4) ETC Source Four Ellipsoidal Luminaires – 50 degree – 575w
- Twenty four (24) ETC Source Four 6" Fresnel with barn door – 575w
- Twelve (12) ETC Source Four ParNel Luminaires 575w
- Eighteen (18) ETC Source Four Par Luminaires 575w
- Six (6) Elation Opti Tri Par LED wash fixtures
- Two (2) MAC 250 moving head fixtures
- Eight (8) ETC Gobo Holder – size B
- Six (6) Drop in irises
- Small assortment of colour and gobos
- Assorted Extension Cables, Two-fers, Adapters, etc.

## **INFRASTRUCTURE**

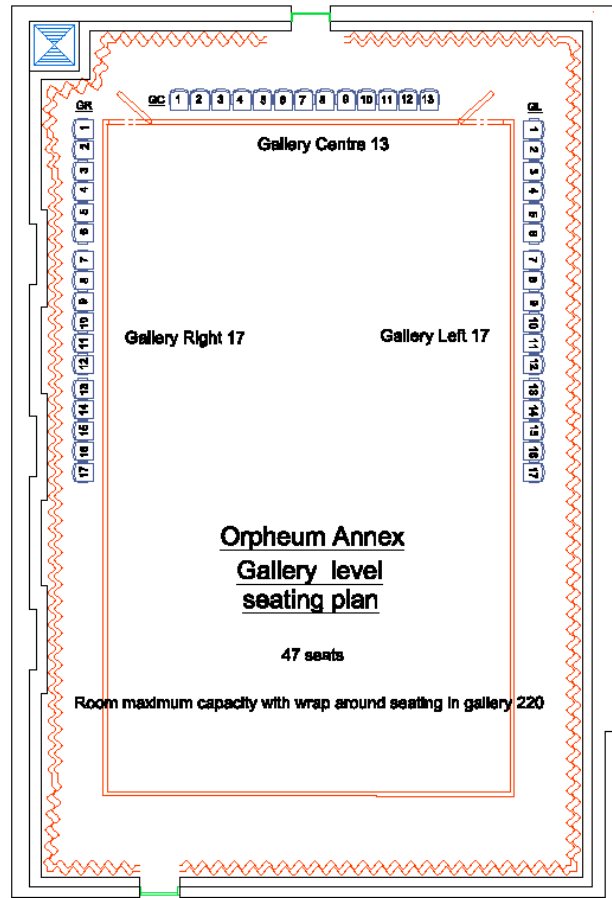
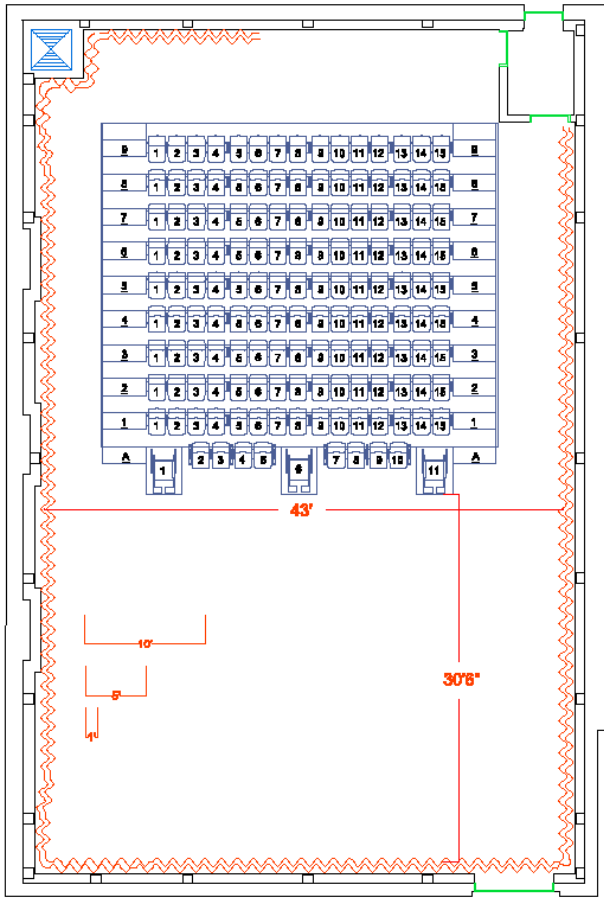
Plug in panels exist throughout facility for both lighting and sound systems – allowing control from a variety of positions

## **TOUR SYSTEM POWER**

Additional power is available for touring systems.

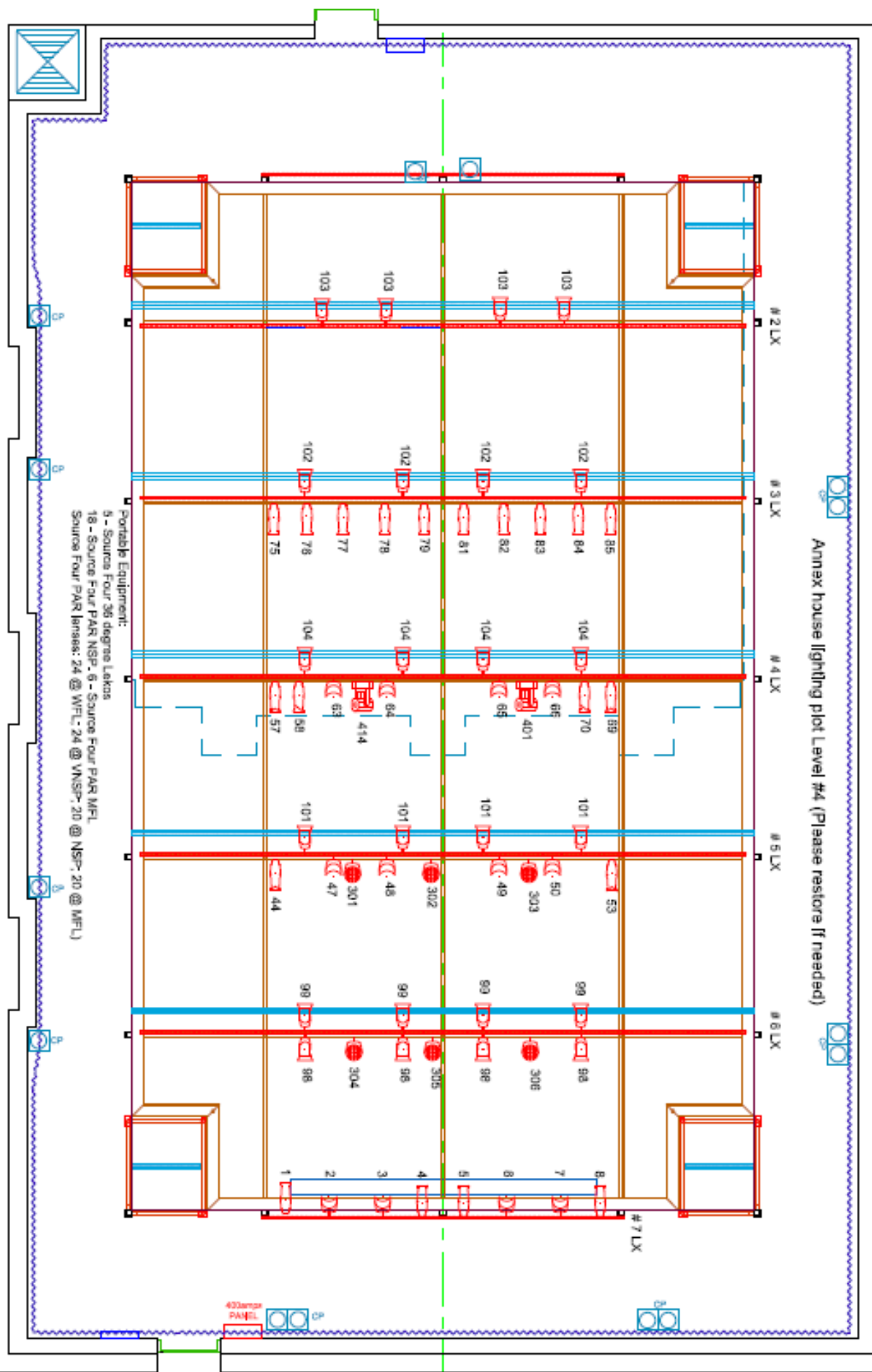
## **MUSIC STANDS AND CHAIRS**

- (26) Black Manhasset Music stands
- (105) Black Padded armless musician chairs



Marin Mac 250 - [Symbol] SOURCE 4 28° 57SW [Symbol] SOURCE 4 36° 57SW [Symbol] SOURCE 4 50° 57SW [Symbol] SOURCE 4 60° 57SW [Symbol] SOURCE 4 75° 57SW [Symbol] SOURCE 4 Fresnel [Symbol] SOURCE 4 Par 57SW [Symbol] SOURCE 4 Par 57SW [Symbol] Elalpin Opt 17 Par [Symbol]

Annex house lighting plot Level #4 (Please restore if needed)



Portable Equipment:  
 5 - Source Four 36 degree Leks  
 18 - Source Four PAR NSP-6 - Source Four PAR MFL  
 Source Four PAR lenses: 24 @ WFL-24 @ VNSP-20 @ NSP-20 @ MFL

