



# Technical Information

---

## Staff Contacts:

Paul McManus, Sr. Manager, Production      604-665-3024  
Brendan Keith, Technical Director          604-665-3043  
Jeff Leard, Head Stage Carpenter          604-829-9451  
Booking Enquiries

[paul.mcmanus@vancouver.ca](mailto:paul.mcmanus@vancouver.ca)  
[brendan.keith@vancouver.ca](mailto:brendan.keith@vancouver.ca)  
[jeff.leard@vancouver.ca](mailto:jeff.leard@vancouver.ca)  
[vctbooking@vancouver.ca](mailto:vctbooking@vancouver.ca)

## Portable stage:

- 24' wide by 12' deep consisting of nine 8' x 4' decks

## Portable Sound System:

- 6 x JBL EON 15" Powered Speakers
  - 6 x speaker stands
  - 3 x Shure SM58
  - 4 x Shure SM57
  - 1 x Sennheiser 902
  - 2 x Sennheiser 914
  - 4 x Sennheiser 904
  - 2 x Radial JDI passive DI
  - 2 x Radial Pro-D2 stereo DI
  - 1 x Radial AV1 Multimedia DI
  - 1 x Cable Factory Stereo PC-Pro DI
  - 1 x Allen and Heath QU16 digital console with remote stage box
  - 1 x Radial 100 FT 8x4 Stage flea sub-snake
- Small inventory of assorted stands & cables

## Video:

- One (1) Open Air Cinema 25' inflatable projection screen
- One (1) Christie HD10K -M DLP Projector
- One (1) Kramer VS-41H 4 x 1 HDMI Switcher
- One (1) Denon DN500 BC Blu-Ray disc player

**Electrical:**

- Two (2) Panels, one with 400 Amp 208 volt 3 phase, and one with 200 Amp 208 volt 3 phase located in the QET electronic sign on the Georgia Street edge.
  - 1 x 75 FT 30 amp 3Y phase cable
  - 1 x 50 FT 30 amp 3Y phase cable
  - 1 x LEX Bento Box 208Y/120V 30A 3 phase, 6 circuit distro
  - 4 x Theatrix 15amp 4 outlet U ground boxes
  - 1 x 100' 120 VAC cable
  - 7 x 50' 120 VAC cable
  - 6 x 25' 120 VAC cable

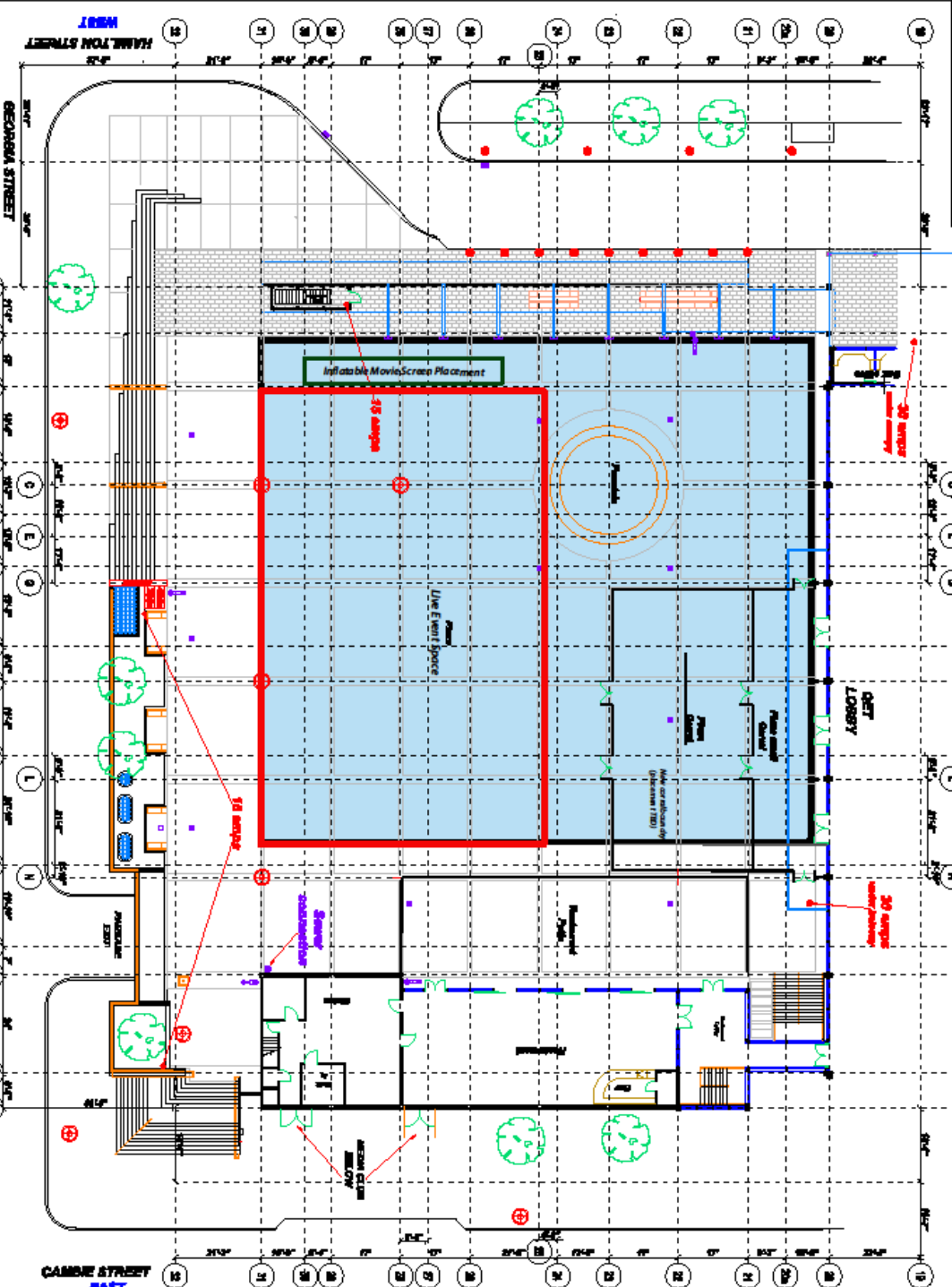
**Water:**

- Four (4) Domestic cold water hose-bibs

205 QET Plaza  
 QET plan 11  
 Scale: 1/8" = 1'-0"  
 07/28/06-2011

PROJECT NORTH  
 PROJECT SOUTH  
 PROJECT EAST  
 PROJECT WEST  
 15' AMPLE  
 20' AMPLE  
 30' AMPLE  
 40' AMPLE  
 50' AMPLE  
 60' AMPLE  
 70' AMPLE  
 80' AMPLE  
 90' AMPLE  
 100' AMPLE  
 110' AMPLE  
 120' AMPLE  
 130' AMPLE  
 140' AMPLE  
 150' AMPLE  
 160' AMPLE  
 170' AMPLE  
 180' AMPLE  
 190' AMPLE  
 200' AMPLE  
 210' AMPLE  
 220' AMPLE  
 230' AMPLE  
 240' AMPLE  
 250' AMPLE  
 260' AMPLE  
 270' AMPLE  
 280' AMPLE  
 290' AMPLE  
 300' AMPLE  
 310' AMPLE  
 320' AMPLE  
 330' AMPLE  
 340' AMPLE  
 350' AMPLE  
 360' AMPLE  
 370' AMPLE  
 380' AMPLE  
 390' AMPLE  
 400' AMPLE  
 410' AMPLE  
 420' AMPLE  
 430' AMPLE  
 440' AMPLE  
 450' AMPLE  
 460' AMPLE  
 470' AMPLE  
 480' AMPLE  
 490' AMPLE  
 500' AMPLE  
 510' AMPLE  
 520' AMPLE  
 530' AMPLE  
 540' AMPLE  
 550' AMPLE  
 560' AMPLE  
 570' AMPLE  
 580' AMPLE  
 590' AMPLE  
 600' AMPLE  
 610' AMPLE  
 620' AMPLE  
 630' AMPLE  
 640' AMPLE  
 650' AMPLE  
 660' AMPLE  
 670' AMPLE  
 680' AMPLE  
 690' AMPLE  
 700' AMPLE  
 710' AMPLE  
 720' AMPLE  
 730' AMPLE  
 740' AMPLE  
 750' AMPLE  
 760' AMPLE  
 770' AMPLE  
 780' AMPLE  
 790' AMPLE  
 800' AMPLE  
 810' AMPLE  
 820' AMPLE  
 830' AMPLE  
 840' AMPLE  
 850' AMPLE  
 860' AMPLE  
 870' AMPLE  
 880' AMPLE  
 890' AMPLE  
 900' AMPLE  
 910' AMPLE  
 920' AMPLE  
 930' AMPLE  
 940' AMPLE  
 950' AMPLE  
 960' AMPLE  
 970' AMPLE  
 980' AMPLE  
 990' AMPLE  
 1000' AMPLE

STAND ALONE  
 PLAZA EVENT  
 ACTIVATION SPACE



GEORGIA STREET SOUTH  
 HAMBLETON STREET  
 CAMBRIDGE STREET EAST