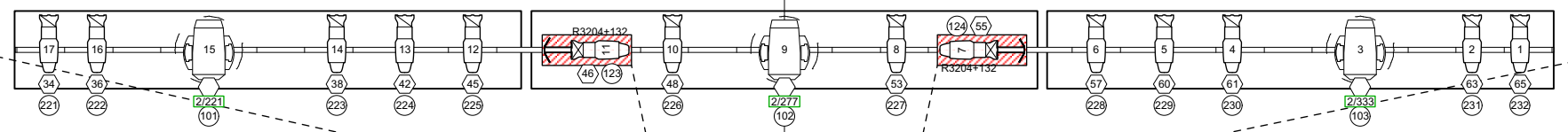


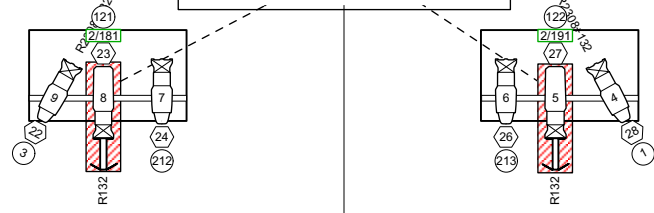
-30'0" -25'0" -20'0" -15'0" -10'0" -5'0" 0" 5'0" 10'0" 15'0" 20'0" 25'0" 30'0"



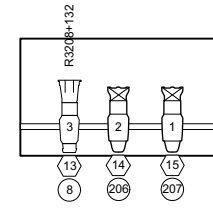
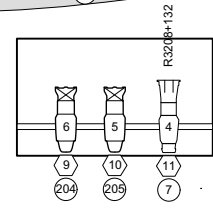
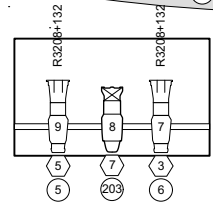
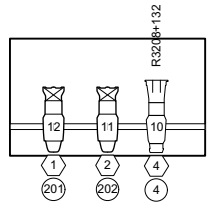
18'2" to bottom
13'8" to bottom

- Typical Distance to 0' Mark**
- A. 60' — FoH 3
 - B. 42' — FoH 2
 - C. 45' — Balcony Rail
 - D. 40' — Box Boom
 - E. 37' — Slot Boom

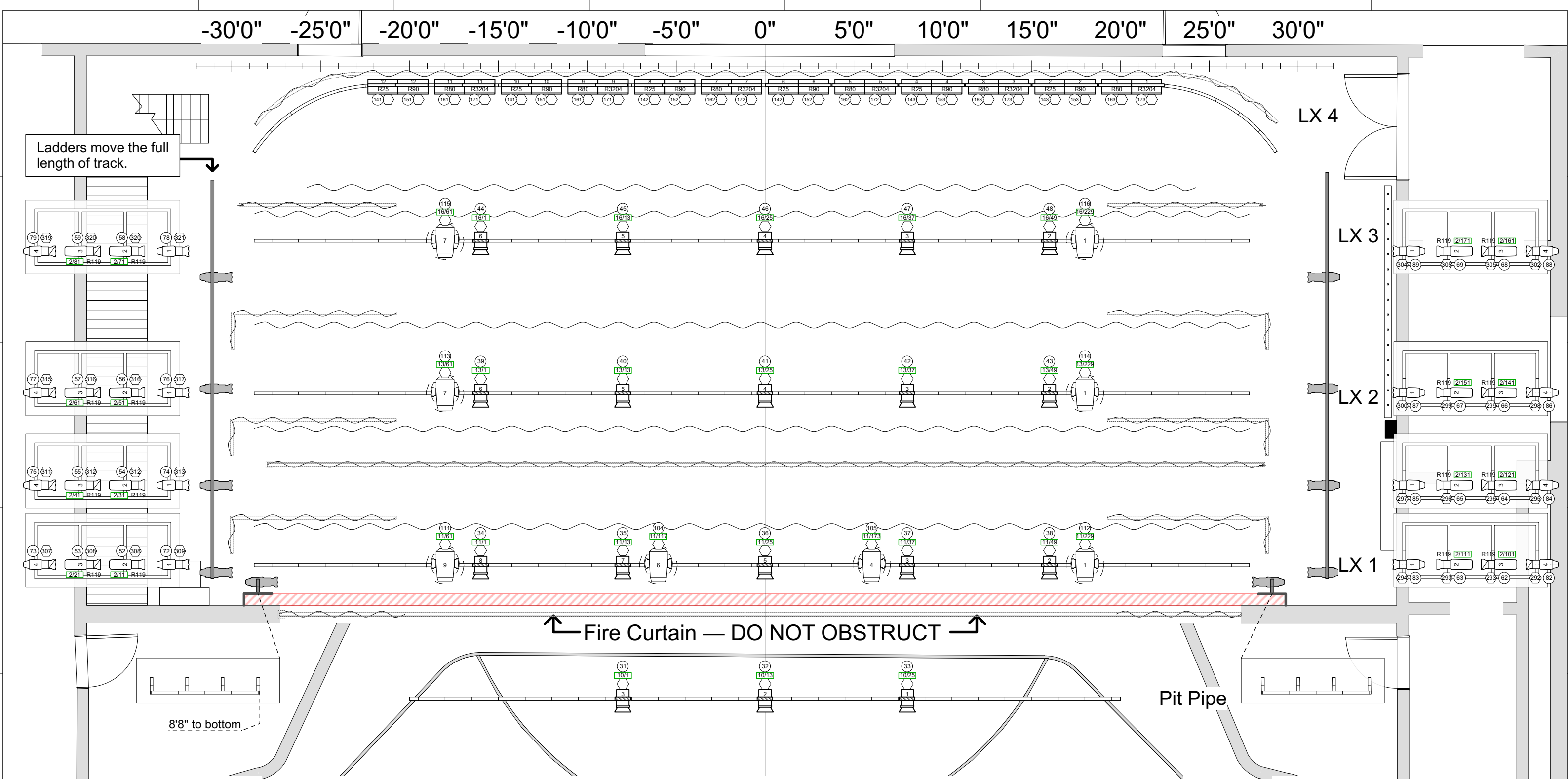
I-Cue fixtures with red hatch cannot be struck



Accessory		
	I-Cue 3.5 lbs	4 / 6
Light		
	ETC Source4 10deg 15 lbs	2 / 3
	ETC Source4 14deg 19.3 lbs	5 / 5
	ETC Source4 19deg 14 lbs	24 / 29
	ETC Source4 26deg 14 lbs	30 / 55
	ETC Source4 36deg 14 lbs	8 / 51
	ETC Source4 50deg 14 lbs	2 / 22
	ETC Source4 LED 19deg 14 lbs	2 / 0
	ETC Source4 LED 26deg 14 lbs	8 / 6
	ETC Source4 LED 36deg 14 lbs	10 / 14
	ETC Desire Fresnel 23.7Lbs	18 / 18
	Strand 6" Fresnelite 10.5 lbs	0 / 40
	Strand Iris 2 Horiz 34 lbs	0 / 12
Moving Light		
	Robe T2 81.4	11 / 11



<h1>Playhouse Plot</h1>	
LX FoH 11x17	Date : Dec 11th, 2022
Vancouver Playhouse	Scale : 3/16th
Director :	1 OF 6
Designer :	



Accessory	I-Cue 3.5 lbs	4 / 6
Light	ETC Source4 10deg 15 lbs	2 / 3
	ETC Source4 14deg 19.3 lbs	5 / 5
	ETC Source4 19deg 14 lbs	24 / 29
	ETC Source4 26deg 14 lbs	30 / 55
	ETC Source4 36deg 14 lbs	8 / 51
	ETC Source4 50deg 14 lbs	2 / 22
	ETC Source4 LED 19deg 14 lbs	2 / 0
	ETC Source4 LED 26deg 14 lbs	8 / 6
	ETC Source4 LED 36deg 14 lbs	10 / 14
	ETC Desire Fresnel 23.7 lbs	18 / 18
	Strand 6" Fresnelite 10.5 lbs	0 / 40
	Strand Iris 2 Horiz 34 lbs	0 / 12
Moving Light	Robe T2 81.4	11 / 11

General Notes

A. House plot is to be restored at the end of venue rental.

B. Front, top and LED side focus is guaranteed, all else must be focused per the show's specifications.

C. Data distribution is network only, with sACN preferred but Art-Net acceptable.

D. Typical house trim is 22' Arbor capacity on all but LX 1 is 700lb, with LX 2 & 3 weighing in at 500lb in house configuration

E.

Playhouse Plot

LX Onstage 11x17	Date : Dec 11th, 2022
Vancouver Playhouse	Scale : 3/16th
Director :	2 OF 6
Designer :	
VANCOUVER CIVIC THEATRES	