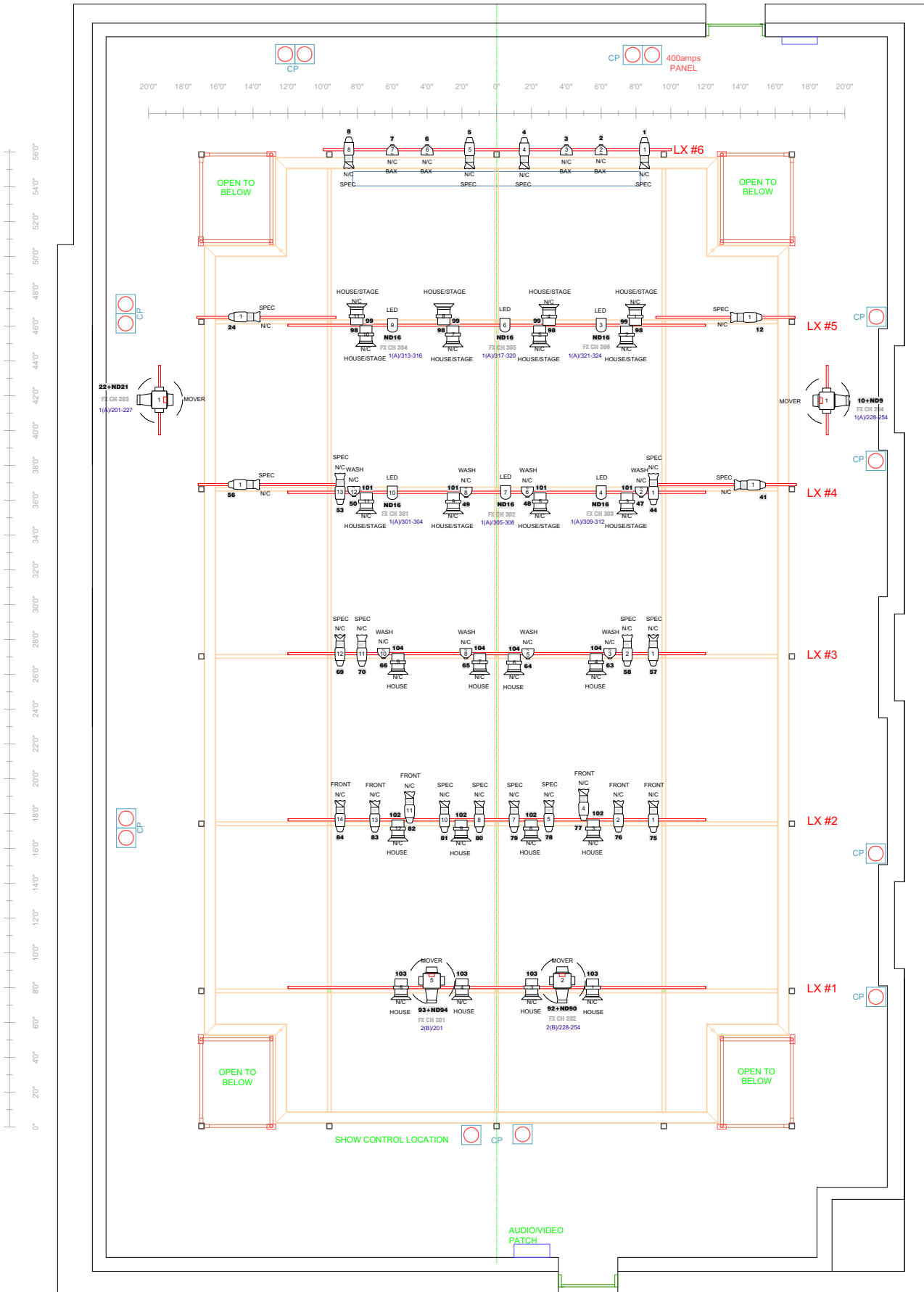


BACKSTAGE



Symbol Key

Light	
	Light Instr Elation Opti TriPar 4ch @ 70w 6
	ETC Source4 26deg @ 575w 14
	ETC Source4 36deg @ 575w 8
	ETC Source4 50deg @ 575w 2
	ETC Source4 Fresnel @ 575w 24
	ETC Source4 PARNel @ 575w 12
	Varilite VL 1000 @ 1kw 4
Static Accessory	
	USITT 6in 4BarnDoor 24

Typical

Purpose	Color	Unit Number	Dimmer	Address	Channel

Note: Only the red pipes are hanging positions. The light orange sections are only the steel structure of the grid

Vancouver Civic Theatre
ANNEX



Ground Plan Drawn:	OCTOBER 18, 2012
Lighting Plot Revised:	AUGUST 25, 2023
Revised By:	Brendan Keith
Scale:	1/8" = 1'-0" V1

LOBBY / FOH