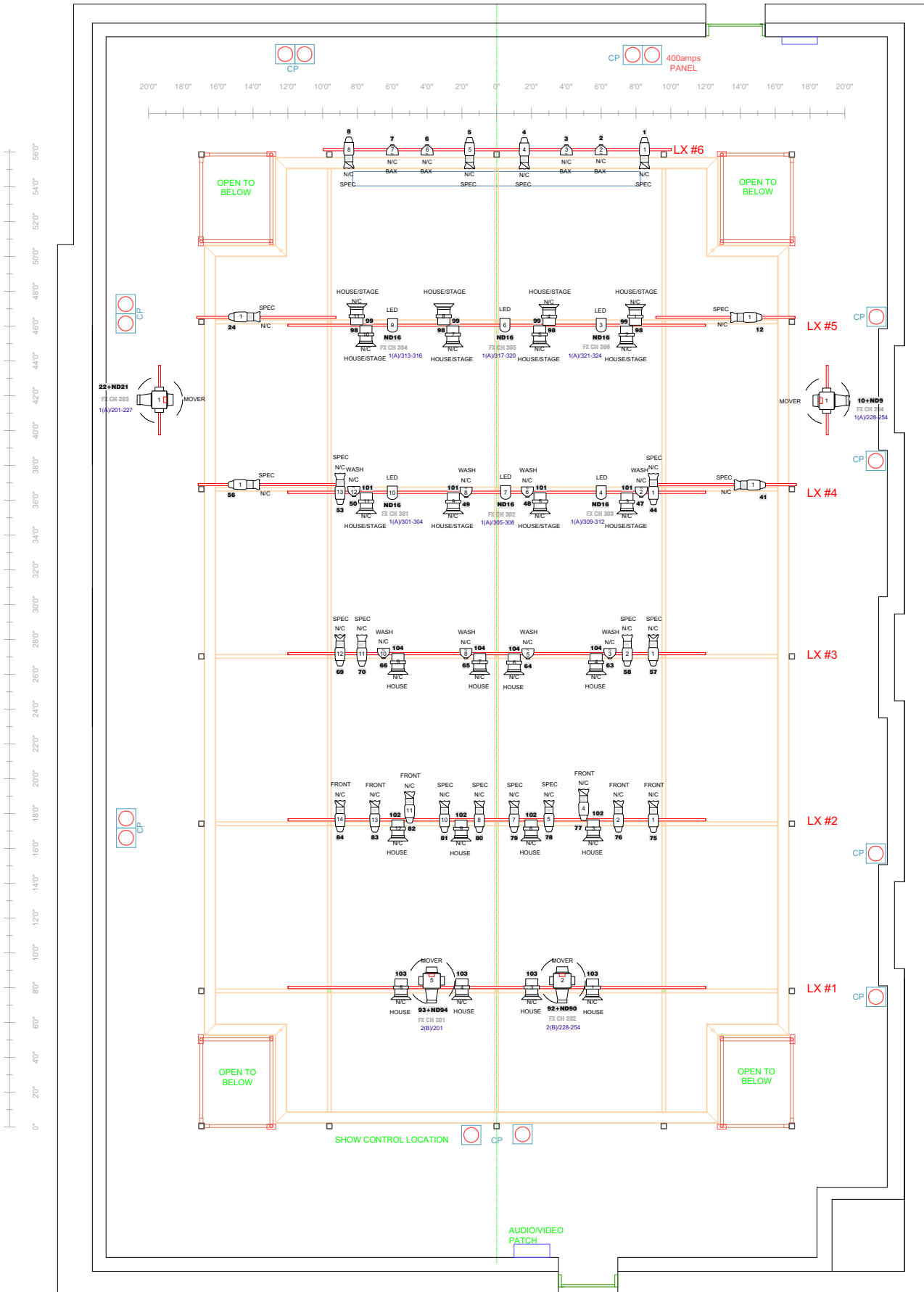


BACKSTAGE



Symbol Key

Light	
	Light Instr Elation Opti TriPar 4ch @ 70w 6
	ETC Source4 26deg @ 575w 14
	ETC Source4 36deg @ 575w 8
	ETC Source4 50deg @ 575w 2
	ETC Source4 Fresnel @ 575w 24
	ETC Source4 PARNel @ 575w 12
	Varilite VL 1000 @ 1kw 4
Static Accessory	
	USITT 6in 4BarnDoor 24

Typical

Purpose	Color	Unit Number	Dimmer	Address	Channel

Note: Only the red pipes are hanging positions. The light orange sections are only the steel structure of the grid

Vancouver Civic Theatre
ANNEX



Ground Plan Drawn:	OCTOBER 18, 2012
Lighting Plot Revised:	AUGUST 25, 2023
Revised By:	Brendan Keith
Scale:	1/8" = 1'-0" V1

LOBBY / FOH



INSTRUMENT TYPE STOCK COUNT

Page 1 of 1

823 Seymour Street
Vancouver, BC
V6B 3L4

Version: 1
TD: Brendan Keith / SMP: Paul McManus
Paperwork By: B. Keith

INSTRUMENT TYPE STOCK COUNT

	In Stock	In Use	Remaining	Short
SOURCE 4	25	24	1	
BODY				
SOURCE 4-26°	14	14		
SOURCE 4-36°	8	8		
SOURCE 4-50°	4	2	2	
SOURCE 4 FRESNEL 7"	24	24		
SOURCE 4 PARNEL	12	12		
SOURCE 4 PAR	18		18	LARGE SELECTION OF LENSES AVAILABLE
ELATION OPTI TRI PAR	6	6		
PAR 32	11	11		
VL1000TS	7	4	3	3 REMAING EQUALS SPARE ONLY
DIM RELAY	4	4		
RESPONSE DMX REPEATER	1	1		
PATHWAY VIA 12 SWITCH	1	1		



ACCESSORIES STOCK COUNT

Page 1 of 1

823 Seymour Street
Vancouver, BC
V6B 3L4

Version: 1
TD: Brendan Keith / SMP: Paul McManus
Paperwork By: B. Keith

ACCESSORIES STOCK COUNT

	In Stock	In Use	Remaining	Short
SOURCE 4 IRIS KIT	14		14	
BARNDOOR	24	24		



Lighting Paperwork 2023

2:07 PM
8/25/2023

REPORT

Page 1 of 1



823 Seymour Street
Vancouver, BC
V6B 3L4

Version: 1
TD: Brendan Keith / SMP: Paul McManus
Paperwork By: B. Keith

DIMMER INFORMATION

Control System: A

Service	Rack Label	Type	Rack Size	Start#	End#	Capacity	Volts	Link	Start Addr	Notes
Level 3	Rack 1	Dimmer	96	1	96	2.4kW	120		1(A)/1 = 1	
Level 3	Rack 2	Dimmer	22	97	118	2.4kW	120		1(A)/97 = 97	



INSTRUMENT SCHEDULE

Page 1 of 8

823 Seymour Street
Vancouver, BC
V6B 3L4

Version: 1
TD: Brendan Keith / SMP: Paul McManus
Paperwork By: B. Keith

ELECTRIC #1

+8'-0" FROM SHOW CONTROL

U#	Type & Watts	Purpose	Clr & Tmpl	Chn	Dim	Address	DxQ	FX #	Dist
1	SOURCE 4 FRESNEL 7" 575w	HOUSELIGHTS		(103)	103	1(A)/103 = 103			5'-6"SL
2.0	VL1000TS 1kW	MOVING LIGHT		(202)	92	2(B)/228 = 740	1	202	3'-9"SL
2.1	DIM RELAY 1kW	ML POWER		(90)	90	1(A)/90 = 90		202	3'-9"SL
3	SOURCE 4 FRESNEL 7" 575w	HOUSELIGHTS		(103)	103	1(A)/103 = 103			2'-0"SL
4	SOURCE 4 FRESNEL 7" 575w	HOUSELIGHTS		(103)	103	1(A)/103 = 103			2'-0"SR
5.0	VL1000TS 1kW	MOVING LIGHT		(201)	93	2(B)/201 = 713	1	201	3'-9"SR
5.1	DIM RELAY 1kW	ML POWER		(94)	94	1(A)/94 = 94		201	3'-9"SR
6	SOURCE 4 FRESNEL 7" 575w	HOUSELIGHTS							5'-6"SR



INSTRUMENT SCHEDULE

ELECTRIC #2

+17'-0" FROM SHOW CONTROL

U#	Type & Watts	Purpose	Clr & Tmpl	Chn	Dim	Address	DxQ	FX #	Dist
1	SOURCE 4-26° 575w	FRONT	N/C	<input type="radio"/> (75)	75	1(A)/75 = 75			9'-0"SL
2	SOURCE 4-26° 575w	FRONT	N/C	<input type="radio"/> (76)	76	1(A)/76 = 76			7'-0"SL
3	SOURCE 4 FRESNEL 7" 575w	HOUSELIGHTS	N/C	<input type="radio"/> (102)	102	1(A)/102 = 102			5'-6"SL
4	SOURCE 4-26° 575w	FRONT	N/C	<input type="radio"/> (77)	77	1(A)/77 = 77			5'-0"SL
5	SOURCE 4-26° 575w	FRONT	N/C	<input type="radio"/> (78)	78	1(A)/78 = 78			3'-0"SL
6	SOURCE 4 FRESNEL 7" 575w	HOUSELIGHTS	N/C	<input type="radio"/> (102)	102	1(A)/102 = 102			2'-0"SL
7	SOURCE 4-26° 575w	FRONT	N/C	<input type="radio"/> (79)	79	1(A)/79 = 79			1'-0"SL
8	SOURCE 4-26° 575w	FRONT	N/C	<input type="radio"/> (80)	80	1(A)/80 = 80			1'-0"SR
9	SOURCE 4 FRESNEL 7" 575w	HOUSELIGHTS	N/C	<input type="radio"/> (102)	102	1(A)/102 = 102			2'-0"SR
10	SOURCE 4-26° 575w	FRONT	N/C	<input type="radio"/> (81)	81	1(A)/81 = 81			3'-0"SR
11	SOURCE 4-26° 575w	FRONT	N/C	<input type="radio"/> (82)	82	1(A)/82 = 82			5'-0"SR
12	SOURCE 4 FRESNEL 7" 575w	HOUSELIGHTS	N/C	<input type="radio"/> (102)	102	1(A)/102 = 102			5'-6"SR
13	SOURCE 4-26° 575w	FRONT	N/C	<input type="radio"/> (83)	83	1(A)/83 = 83			7'-0"SR
14	SOURCE 4-26° 575w	FRONT	N/C	<input type="radio"/> (84)	84	1(A)/84 = 84			9'-0"SR



INSTRUMENT SCHEDULE

ELECTRIC #3

+27'-0" FROM SHOW CONTROL

U#	Type & Watts	Purpose	Clr & Tmpl	Chn	Dim	Address	DxQ	FX #	Dist
1	SOURCE 4-50° 575w	SPECIAL	N/C	<input type="radio"/> (57)	57	1(A)/57 = 57			9'-0"SL
2	SOURCE 4-36° 575w	SPECIAL	N/C	<input type="radio"/> (58)	58	1(A)/58 = 58			7'-6"SL
3	SOURCE 4 PARNEL 575w	WASH	N/C	<input type="radio"/> (63)	63	1(A)/63 = 63			6'-6"SL
4	SOURCE 4 FRESNEL 7" 575w	HOUSELIGHTS	N/C	<input type="radio"/> (104)	104	1(A)/104 = 104			5'-9"SL
5	SOURCE 4 PARNEL 575w	WASH	N/C	<input type="radio"/> (64)	64	1(A)/64 = 64			1'-9"SL
6	SOURCE 4 FRESNEL 7" 575w	HOUSELIGHTS	N/C	<input type="radio"/> (104)	104	1(A)/104 = 104			1'-0"SL
7	SOURCE 4 FRESNEL 7" 575w	HOUSELIGHTS	N/C	<input type="radio"/> (104)	104	1(A)/104 = 104			1'-0"SR
8	SOURCE 4 PARNEL 575w	WASH	N/C	<input type="radio"/> (65)	65	1(A)/65 = 65			1'-9"SR
9	SOURCE 4 FRESNEL 7" 575w	HOUSELIGHTS	N/C	<input type="radio"/> (104)	104	1(A)/104 = 104			5'-9"SR
10	SOURCE 4 PARNEL 575w	WASH	N/C	<input type="radio"/> (66)	66	1(A)/66 = 66			6'-6"SR
11	SOURCE 4-36° 575w	SPECIAL	N/C	<input type="radio"/> (70)	70	1(A)/70 = 70			7'-6"SR
12	SOURCE 4-50° 575w	SPECIAL	N/C	<input type="radio"/> (69)	69	1(A)/69 = 69			9'-0"SR



INSTRUMENT SCHEDULE

ELECTRIC #4

+36'-6" FROM SHOW CONTROL

U#	Type & Watts	Purpose	Clr & Tmpl	Chn	Dim	Address	DxQ	FX #	Dist
1	SOURCE 4-36° 575w	SPECIAL	N/C	<input type="radio"/> (44)	44	1(A)/44 = 44			9'-0"SL
2	SOURCE 4 PARNEL 575w	WASH	N/C	<input type="radio"/> (47)	47	1(A)/47 = 47			8'-3"SL
3	SOURCE 4 FRESNEL 7" 575w	HOUSELIGHTS	N/C	<input type="radio"/> (101)	101	1(A)/101 = 101			7'-6"SL
4	ELATION OPTI TRI PAR 63w	LED WASH	LED	<input type="radio"/> (303)	16	1(A)/309 = 309	4	303	6'-0"SL
5	SOURCE 4 FRESNEL 7" 575w	HOUSELIGHTS	N/C	<input type="radio"/> (101)	101	1(A)/101 = 101			2'-6"SL
6	SOURCE 4 PARNEL 575w	WASH	N/C	<input type="radio"/> (48)	48	1(A)/48 = 48			1'-9"SL
7	ELATION OPTI TRI PAR 63w	LED WASH	LED	<input type="radio"/> (302)	16	1(A)/305 = 305	4	302	0'-6"SL
8	SOURCE 4 PARNEL 575w	WASH	N/C	<input type="radio"/> (49)	49	1(A)/49 = 49			1'-9"SR
9	SOURCE 4 FRESNEL 7" 575w	HOUSELIGHTS	N/C	<input type="radio"/> (101)	101	1(A)/101 = 101			2'-6"SR
10	ELATION OPTI TRI PAR 63w	LED WASH	LED	<input type="radio"/> (301)	16	1(A)/301 = 301	4	301	6'-0"SR
11	SOURCE 4 FRESNEL 7" 575w	HOUSELIGHTS	N/C	<input type="radio"/> (101)	101	1(A)/101 = 101			7'-6"SR
12	SOURCE 4 PARNEL 575w	WASH	N/C	<input type="radio"/> (50)	50	1(A)/50 = 50			8'-3"SR
13	SOURCE 4-36° 575w	SPECIAL	N/C	<input type="radio"/> (53)	53	1(A)/53 = 53			9'-0"SR



INSTRUMENT SCHEDULE

ELECTRIC #5

+46'-0" FROM SHOW CONTROL

U#	Type & Watts	Purpose	Clr & Tmpl	Chn	Dim	Address	DxQ	FX #	Dist
1	SOURCE 4 FRESNEL 7" 575w	HOUSELIGHTS	N/C	<input type="radio"/> (98)	98	1(A)/98 = 98			8'-0"SL
2	SOURCE 4 FRESNEL 7" 575w	HOUSELIGHTS	N/C	<input type="radio"/> (99)	99	1(A)/99 = 99			7'-6"SL
3	ELATION OPTI TRI PAR 63w	LED WASH	LED	<input type="radio"/> (306)	16	1(A)/321 = 321	4	306	6'-0"SL
4	SOURCE 4 FRESNEL 7" 575w	HOUSELIGHTS	N/C	<input type="radio"/> (98)	98	1(A)/98 = 98			3'-0"SL
5	SOURCE 4 FRESNEL 7" 575w	HOUSELIGHTS	N/C	<input type="radio"/> (99)	99	1(A)/99 = 99			2'-6"SL
6	ELATION OPTI TRI PAR 63w	LED WASH	LED	<input type="radio"/> (305)	16	1(A)/317 = 317	4	305	0'-6"SL
7	SOURCE 4 FRESNEL 7" 575w	HOUSELIGHTS	N/C	<input type="radio"/> (99)	99	1(A)/99 = 99			2'-6"SR
8	SOURCE 4 FRESNEL 7" 575w	HOUSELIGHTS	N/C	<input type="radio"/> (98)	98	1(A)/98 = 98			3'-0"SR
9	ELATION OPTI TRI PAR 63w	LED WASH	LED	<input type="radio"/> (304)	16	1(A)/313 = 313	4	304	6'-0"SR
10	SOURCE 4 FRESNEL 7" 575w	HOUSELIGHTS	N/C	<input type="radio"/> (99)	99	1(A)/99 = 99			7'-6"SR
11	SOURCE 4 FRESNEL 7" 575w	HOUSELIGHTS	N/C	<input type="radio"/> (98)	98	1(A)/98 = 98			8'-0"SR



INSTRUMENT SCHEDULE

ELECTRIC #6

+56'-0" FROM SHOW CONTROL

U#	Type & Watts	Purpose	Clr & Tmpl	Chn	Dim	Address	DxQ	FX #	Dist
1	SOURCE 4-26° 575w	SPECIAL	N/C	<input type="radio"/>	(1)	1	1(A)/1 = 1		8'-6"SL
2	SOURCE 4 PARNEL 575w	BAX	N/C	<input type="radio"/>	(2)	2	1(A)/2 = 2		6'-0"SL
3	SOURCE 4 PARNEL 575w	BAX	N/C	<input type="radio"/>	(3)	3	1(A)/3 = 3		4'-0"SL
4	SOURCE 4-26° 575w	SPECIAL	N/C	<input type="radio"/>	(4)	4	1(A)/4 = 4		1'-6"SL
5	SOURCE 4-26° 575w	SPECIAL	N/C	<input type="radio"/>	(5)	5	1(A)/5 = 5		1'-6"SR
6	SOURCE 4 PARNEL 575w	BAX	N/C	<input type="radio"/>	(6)	6	1(A)/6 = 6		4'-0"SR
7	SOURCE 4 PARNEL 575w	BAX	N/C	<input type="radio"/>	(7)	7	1(A)/7 = 7		6'-0"SR
8	SOURCE 4-26° 575w	SPECIAL	N/C	<input type="radio"/>	(8)	8	1(A)/8 = 8		8'-6"SR

ELETRIC #4 - SL EXT

+36'-6" FROM SHOW CONTROL

U#	Type & Watts	Purpose	Clr & Tmpl	Chn	Dim	Address	DxQ	FX #	Dist
1	SOURCE 4-36° 575w	SPECIAL	N/C	<input type="radio"/>	(41)	41	1(A)/41 = 41		14'-6"SL

ELETRIC #4 - SR EXT

+36'-6" FROM SHOW CONTROL

U#	Type & Watts	Purpose	Clr & Tmpl	Chn	Dim	Address	DxQ	FX #	Dist
1	SOURCE 4-36° 575w	SPECIAL	N/C	<input type="radio"/>	(56)	56	1(A)/56 = 56		14'-6"SR

ELETRIC #5 - SL EXT

+46'-0" FROM SHOW CONTROL

U#	Type & Watts	Purpose	Clr & Tmpl	Chn	Dim	Address	DxQ	FX #	Dist
1	SOURCE 4-36° 575w	SPECIAL	N/C	<input type="radio"/>	(12)	12	1(A)/12 = 12		14'-6"SL

ELETRIC #5 - SR EXT

+46'-0" FROM SHOW CONTROL

U#	Type & Watts	Purpose	Clr & Tmpl	Chn	Dim	Address	DxQ	FX #	Dist
1	SOURCE 4-36° 575w	SPECIAL	N/C	<input type="radio"/>	(24)	24	1(A)/24 = 24		14'-6"SR



INSTRUMENT SCHEDULE

SL UNDER CATWALK

+42'-0" FROM SHOW CONTROL

U#	Type & Watts	Purpose	Clr & Tmpl	Chn	Dim	Address	DxQ	FX #	Dist
1.0	VL1000TS 1kW	MOVING LIGHT		(204)	10	1(A)/228 = 228	1	204	20'-0"SL
1.1	DIM RELAY 1kW	ML POWER		(9)	9	1(A)/9 = 9		204	20'-0"SL

SR UNDER CATWALK

+42'-0" FROM SHOW CONTROL

U#	Type & Watts	Purpose	Clr & Tmpl	Chn	Dim	Address	DxQ	FX #	Dist
1.0	VL1000TS 1kW	MOVING LIGHT		(203)	22	1(A)/201 = 201	1	203	20'-0"SR
1.1	DIM RELAY 1kW	ML POWER		(21)	21	1(A)/21 = 21		203	20'-0"SR

DIMMER ROOM

LEVEL 3

U#	Type & Watts	Purpose	Clr & Tmpl	Chn	Dim	Address	DxQ	FX #	Dist
1	PATHWAY VIA 12 SWITCH	CONTROL							

CATWALK

LEVEL 4

U#	Type & Watts	Purpose	Clr & Tmpl	Chn	Dim	Address	DxQ	FX #	Dist
1	RESPONSE DMX REPEATER	CONTROL							

LEVEL 2 PERIMETER

AUDIENCE CATWALK

U#	Type & Watts	Purpose	Clr & Tmpl	Chn	Dim	Address	DxQ	FX #	Dist
1	PAR 32 90w	HOUSELIGHTS	N/C	<input type="checkbox"/>	(111)	111		1(A)/111 = 111	
2	PAR 32 90w	BLUE RUNNING	R80	<input checked="" type="checkbox"/>	(116)	116		1(A)/116 = 116	
3	PAR 32 90w	BLUE RUNNING - NORTH	R80	<input checked="" type="checkbox"/>	(112)	112		1(A)/112 = 112	
4	PAR 32 90w	HOUSELIGHTS - EAST/WEST	N/C	<input type="checkbox"/>	(115)	115		1(A)/115 = 115	
5	PAR 32 90w	HOUSELIGHTS - NORTH	N/C	<input type="checkbox"/>	(113)	113		1(A)/113 = 113	



INSTRUMENT SCHEDULE

LEVEL 3 PERIMITER

MAIN FLOOR

U#	Type & Watts	Purpose	Clr & Tmpl	Chn	Dim	Address	DxQ	FX #	Dist
1	PAR 32 90w	HOUSELIGHTS	N/C	<input type="checkbox"/> (105)	105	1(A)/105 = 105			
2	PAR 32 90w	BLUE RUNNING	R80	<input checked="" type="checkbox"/> (106)	106	1(A)/106 = 106			
3	PAR 32 90w	BLUE RUNNING - NORTH	R80	<input checked="" type="checkbox"/> (107)	107	1(A)/107 = 107			
4	PAR 32 90w	HOUSELIGHTS - WEST	N/C	<input type="checkbox"/> (109)	109	1(A)/109 = 109			
5	PAR 32 90w	HOUSELIGHTS - EAST	N/C	<input type="checkbox"/> (108)	108	1(A)/108 = 108			
6	PAR 32 90w	HOUSELIGHTS - NORTH	N/C	<input type="checkbox"/> (110)	110	1(A)/110 = 110			



CHANNEL HOOKUP

Page 1 of 6

823 Seymour Street
Vancouver, BC
V6B 3L4

Version: 1
TD: Brendan Keith / SMP: Paul McManus
Paperwork By: B. Keith

Chn	Di	Address	Position	Unit	Instrument Type & Accessories & Wattage	Purpose	Color & Template
(1)	1	1(A)/1 = 1	ELECTRIC #6	1	SOURCE 4-26° 575w	SPECIAL	N/C
(2)	2	1(A)/2 = 2	ELECTRIC #6	2	SOURCE 4 PARNEL 575w	BAX	N/C
(3)	3	1(A)/3 = 3	ELECTRIC #6	3	SOURCE 4 PARNEL 575w	BAX	N/C
(4)	4	1(A)/4 = 4	ELECTRIC #6	4	SOURCE 4-26° 575w	SPECIAL	N/C
(5)	5	1(A)/5 = 5	ELECTRIC #6	5	SOURCE 4-26° 575w	SPECIAL	N/C
(6)	6	1(A)/6 = 6	ELECTRIC #6	6	SOURCE 4 PARNEL 575w	BAX	N/C
(7)	7	1(A)/7 = 7	ELECTRIC #6	7	SOURCE 4 PARNEL 575w	BAX	N/C
(8)	8	1(A)/8 = 8	ELECTRIC #6	8	SOURCE 4-26° 575w	SPECIAL	N/C
(9)	9	1(A)/9 = 9	SL UNDER CATWALK	1.1	DIM RELAY 1kW	ML POWER	
(12)	12	1(A)/12 = 12	ELECTRIC #5 - SL EXT	1	SOURCE 4-36° 575w	SPECIAL	N/C
(21)	21	1(A)/21 = 21	SR UNDER CATWALK	1.1	DIM RELAY 1kW	ML POWER	
(24)	24	1(A)/24 = 24	ELECTRIC #5 - SR EXT	1	SOURCE 4-36° 575w	SPECIAL	N/C
(41)	41	1(A)/41 = 41	ELECTRIC #4 - SL EXT	1	SOURCE 4-36° 575w	SPECIAL	N/C
(44)	44	1(A)/44 = 44	ELECTRIC #4	1	SOURCE 4-36° 575w	SPECIAL	N/C
(47)	47	1(A)/47 = 47	ELECTRIC #4	2	SOURCE 4 PARNEL 575w	WASH	N/C
(48)	48	1(A)/48 = 48	ELECTRIC #4	6	SOURCE 4 PARNEL 575w	WASH	N/C
(49)	49	1(A)/49 = 49	ELECTRIC #4	8	SOURCE 4 PARNEL 575w	WASH	N/C
(50)	50	1(A)/50 = 50	ELECTRIC #4	12	SOURCE 4 PARNEL 575w	WASH	N/C



CHANNEL HOOKUP

Page 2 of 6

Chn	Di	Address	Position	Unit	Instrument Type & Accessories & Wattage	Purpose	Color & Template
(53)	53	1(A)/53 = 53	ELECTRIC #4	13	SOURCE 4-36° 575w	SPECIAL	N/C
(56)	56	1(A)/56 = 56	ELECTRIC #4 - SR EXT	1	SOURCE 4-36° 575w	SPECIAL	N/C
(57)	57	1(A)/57 = 57	ELECTRIC #3	1	SOURCE 4-50° 575w	SPECIAL	N/C
(58)	58	1(A)/58 = 58	ELECTRIC #3	2	SOURCE 4-36° 575w	SPECIAL	N/C
(63)	63	1(A)/63 = 63	ELECTRIC #3	3	SOURCE 4 PARNEL 575w	WASH	N/C
(64)	64	1(A)/64 = 64	ELECTRIC #3	5	SOURCE 4 PARNEL 575w	WASH	N/C
(65)	65	1(A)/65 = 65	ELECTRIC #3	8	SOURCE 4 PARNEL 575w	WASH	N/C
(66)	66	1(A)/66 = 66	ELECTRIC #3	10	SOURCE 4 PARNEL 575w	WASH	N/C
(69)	69	1(A)/69 = 69	ELECTRIC #3	12	SOURCE 4-50° 575w	SPECIAL	N/C
(70)	70	1(A)/70 = 70	ELECTRIC #3	11	SOURCE 4-36° 575w	SPECIAL	N/C
(75)	75	1(A)/75 = 75	ELECTRIC #2	1	SOURCE 4-26° 575w	FRONT	N/C
(76)	76	1(A)/76 = 76	ELECTRIC #2	2	SOURCE 4-26° 575w	FRONT	N/C
(77)	77	1(A)/77 = 77	ELECTRIC #2	4	SOURCE 4-26° 575w	FRONT	N/C
(78)	78	1(A)/78 = 78	ELECTRIC #2	5	SOURCE 4-26° 575w	FRONT	N/C
(79)	79	1(A)/79 = 79	ELECTRIC #2	7	SOURCE 4-26° 575w	FRONT	N/C
(80)	80	1(A)/80 = 80	ELECTRIC #2	8	SOURCE 4-26° 575w	FRONT	N/C
(81)	81	1(A)/81 = 81	ELECTRIC #2	10	SOURCE 4-26° 575w	FRONT	N/C
(82)	82	1(A)/82 = 82	ELECTRIC #2	11	SOURCE 4-26° 575w	FRONT	N/C
(83)	83	1(A)/83 = 83	ELECTRIC #2	13	SOURCE 4-26° 575w	FRONT	N/C



CHANNEL HOOKUP

Page 3 of 6

Chn	Di	Address	Position	Unit	Instrument Type & Accessories & Wattage	Purpose	Color & Template
(84)	84	1(A)/84 = 84	ELECTRIC #2	14	SOURCE 4-26° 575w	FRONT	N/C
(90)	90	1(A)/90 = 90	ELECTRIC #1	2.1	DIM RELAY 1kW	ML POWER	
(94)	94	1(A)/94 = 94	ELECTRIC #1	5.1	DIM RELAY 1kW	ML POWER	
(98)	98	1(A)/98 = 98	ELECTRIC #5	1	SOURCE 4 FRESNEL 7"+BARNDOR 575w	HOUSELIGHTS	N/C
	98	1(A)/98 = 98	ELECTRIC #5	4	SOURCE 4 FRESNEL 7"+BARNDOR 575w	HOUSELIGHTS	N/C
	98	1(A)/98 = 98	ELECTRIC #5	8	SOURCE 4 FRESNEL 7"+BARNDOR 575w	HOUSELIGHTS	N/C
	98	1(A)/98 = 98	ELECTRIC #5	11	SOURCE 4 FRESNEL 7"+BARNDOR 575w	HOUSELIGHTS	N/C
(99)	99	1(A)/99 = 99	ELECTRIC #5	2	SOURCE 4 FRESNEL 7"+BARNDOR 575w	HOUSELIGHTS	N/C
	99	1(A)/99 = 99	ELECTRIC #5	5	SOURCE 4 FRESNEL 7"+BARNDOR 575w	HOUSELIGHTS	N/C
	99	1(A)/99 = 99	ELECTRIC #5	7	SOURCE 4 FRESNEL 7"+BARNDOR 575w	HOUSELIGHTS	N/C
	99	1(A)/99 = 99	ELECTRIC #5	10	SOURCE 4 FRESNEL 7"+BARNDOR 575w	HOUSELIGHTS	N/C
(101)	101	1(A)/101 = 101	ELECTRIC #4	3	SOURCE 4 FRESNEL 7"+BARNDOR 575w	HOUSELIGHTS	N/C
	101	1(A)/101 = 101	ELECTRIC #4	5	SOURCE 4 FRESNEL 7"+BARNDOR 575w	HOUSELIGHTS	N/C
	101	1(A)/101 = 101	ELECTRIC #4	9	SOURCE 4 FRESNEL 7"+BARNDOR 575w	HOUSELIGHTS	N/C
	101	1(A)/101 = 101	ELECTRIC #4	11	SOURCE 4 FRESNEL 7"+BARNDOR 575w	HOUSELIGHTS	N/C
(102)	102	1(A)/102 = 102	ELECTRIC #2	3	SOURCE 4 FRESNEL 7"+BARNDOR 575w	HOUSELIGHTS	N/C
	102	1(A)/102 = 102	ELECTRIC #2	6	SOURCE 4 FRESNEL 7"+BARNDOR 575w	HOUSELIGHTS	N/C
	102	1(A)/102 = 102	ELECTRIC #2	9	SOURCE 4 FRESNEL 7"+BARNDOR 575w	HOUSELIGHTS	N/C
	102	1(A)/102 = 102	ELECTRIC #2	12	SOURCE 4 FRESNEL 7"+BARNDOR 575w	HOUSELIGHTS	N/C



CHANNEL HOOKUP

Page 4 of 6

Chn	Di	Address	Position	Unit	Instrument Type & Accessories & Wattage	Purpose	Color & Template
(103)	103	1(A)/103 = 103	ELECTRIC #1	1	SOURCE 4 FRESNEL 7"+BARNDOOR 575w	HOUSELIGHTS	
	103	1(A)/103 = 103	ELECTRIC #1	3	SOURCE 4 FRESNEL 7"+BARNDOOR 575w	HOUSELIGHTS	
	103	1(A)/103 = 103	ELECTRIC #1	4	SOURCE 4 FRESNEL 7"+BARNDOOR 575w	HOUSELIGHTS	
(104)	104	1(A)/104 = 104	ELECTRIC #3	4	SOURCE 4 FRESNEL 7"+BARNDOOR 575w	HOUSELIGHTS	N/C
	104	1(A)/104 = 104	ELECTRIC #3	6	SOURCE 4 FRESNEL 7"+BARNDOOR 575w	HOUSELIGHTS	N/C
	104	1(A)/104 = 104	ELECTRIC #3	7	SOURCE 4 FRESNEL 7"+BARNDOOR 575w	HOUSELIGHTS	N/C
	104	1(A)/104 = 104	ELECTRIC #3	9	SOURCE 4 FRESNEL 7"+BARNDOOR 575w	HOUSELIGHTS	N/C
(105)	105	1(A)/105 = 105	LEVEL 3 PERIMITER	1	PAR 32 90w	HOUSELIGHTS	N/C
(106)	106	1(A)/106 = 106	LEVEL 3 PERIMITER	2	PAR 32 90w	BLUE RUNNING	R80
(107)	107	1(A)/107 = 107	LEVEL 3 PERIMITER	3	PAR 32 90w	BLUE RUNNING - NORTH	R80
(108)	108	1(A)/108 = 108	LEVEL 3 PERIMITER	5	PAR 32 90w	HOUSELIGHTS - EAST	N/C
(109)	109	1(A)/109 = 109	LEVEL 3 PERIMITER	4	PAR 32 90w	HOUSELIGHTS - WEST	N/C
(110)	110	1(A)/110 = 110	LEVEL 3 PERIMITER	6	PAR 32 90w	HOUSELIGHTS - NORTH	N/C
(111)	111	1(A)/111 = 111	LEVEL 2 PERIMITER	1	PAR 32 90w	HOUSELIGHTS	N/C
(112)	112	1(A)/112 = 112	LEVEL 2 PERIMITER	3	PAR 32 90w	BLUE RUNNING - NORTH	R80
(113)	113	1(A)/113 = 113	LEVEL 2 PERIMITER	5	PAR 32 90w	HOUSELIGHTS - NORTH	N/C
(115)	115	1(A)/115 = 115	LEVEL 2 PERIMITER	4	PAR 32 90w	HOUSELIGHTS - EAST/WEST	N/C
(116)	116	1(A)/116 = 116	LEVEL 2 PERIMITER	2	PAR 32 90w	BLUE RUNNING	R80
(201)	93	2(B)/201 = 713	ELECTRIC #1	5.0	VL1000TS 1kW	MOVING LIGHT	
(202)	92	2(B)/228 = 740	ELECTRIC #1	2.0	VL1000TS 1kW	MOVING LIGHT	
(203)	22	1(A)/201 = 201	SR UNDER CATWALK	1.0	VL1000TS 1kW	MOVING LIGHT	



CHANNEL HOOKUP

Page 5 of 6

Chn	Di	Address	Position	Unit	Instrument Type & Accessories & Wattage	Purpose	Color & Template
(204)	10	1(A)/228 = 228	SL UNDER CATWALK	1.0	VL1000TS 1kW	MOVING LIGHT	
(301)	16	1(A)/301 = 301	ELECTRIC #4	10	ELATION OPTI TRI PAR 63w	LED WASH	LED
(302)	16	1(A)/305 = 305	ELECTRIC #4	7	ELATION OPTI TRI PAR 63w	LED WASH	LED
(303)	16	1(A)/309 = 309	ELECTRIC #4	4	ELATION OPTI TRI PAR 63w	LED WASH	LED
(304)	16	1(A)/313 = 313	ELECTRIC #5	9	ELATION OPTI TRI PAR 63w	LED WASH	LED
(305)	16	1(A)/317 = 317	ELECTRIC #5	6	ELATION OPTI TRI PAR 63w	LED WASH	LED
(306)	16	1(A)/321 = 321	ELECTRIC #5	3	ELATION OPTI TRI PAR 63w	LED WASH	LED



CHANNEL HOOKUP

Page 6 of 6

Items WITHOUT Channel

Chn	Di	Address	Position	Unit	Instrument Type & Accessories & Wattage	Purpose	Color & Template
			ELECTRIC #1	6	SOURCE 4 FRESNEL 7"+BARNDOR 575w	HOUSELIGHTS	
			DIMMER ROOM	1	PATHWAY VIA 12 SWITCH	CONTROL	
			CATWALK	1	RESPONSE DMX REPEATER	CONTROL	



DIMMER HOOKUP

Page 1 of 5

823 Seymour Street
Vancouver, BC
V6B 3L4

Version: 1
TD: Brendan Keith / SMP: Paul McManus
Paperwork By: B. Keith

Level 3: Rack 1: DIMMERS 1-96 Capacity: 2.4kW @ 120v, in racks of 96

Dim	Chn	Position	U#	Type & Watts	Purpose	Clr & Tmpl	Address	Dist
1	(1)	ELECTRIC #6	1	SOURCE 4-26° 575w	SPECIAL	N/C	<input type="checkbox"/> 1(A)/1 = 1	8'-6"SL
2	(2)	ELECTRIC #6	2	SOURCE 4 PARNEL 575w	BAX	N/C	<input type="radio"/> 1(A)/2 = 2	6'-0"SL
3	(3)	ELECTRIC #6	3	SOURCE 4 PARNEL 575w	BAX	N/C	<input type="checkbox"/> 1(A)/3 = 3	4'-0"SL
4	(4)	ELECTRIC #6	4	SOURCE 4-26° 575w	SPECIAL	N/C	<input type="radio"/> 1(A)/4 = 4	1'-6"SL
5	(5)	ELECTRIC #6	5	SOURCE 4-26° 575w	SPECIAL	N/C	<input type="checkbox"/> 1(A)/5 = 5	1'-6"SR
6	(6)	ELECTRIC #6	6	SOURCE 4 PARNEL 575w	BAX	N/C	<input type="radio"/> 1(A)/6 = 6	4'-0"SR
7	(7)	ELECTRIC #6	7	SOURCE 4 PARNEL 575w	BAX	N/C	<input type="checkbox"/> 1(A)/7 = 7	6'-0"SR
8	(8)	ELECTRIC #6	8	SOURCE 4-26° 575w	SPECIAL	N/C	<input type="radio"/> 1(A)/8 = 8	8'-6"SR
9	(9)	SL UNDER CATWALK	1.1	DIM RELAY 1kW	ML POWER		1(A)/9 = 9	20'-0"SL
10	(204)	SL UNDER CATWALK	1.0	VL1000TS 1kW	MOVING LIGHT		1(A)/228 = 228	20'-0"SL
12	(12)	ELECTRIC #5 - SL EXT	1	SOURCE 4-36° 575w	SPECIAL	N/C	<input type="checkbox"/> 1(A)/12 = 12	14'-6"SL
16	(303)	ELECTRIC #4	4	ELATION OPTI TRI PAR 63w	LED WASH	LED	<input type="radio"/> 1(A)/309 = 309	6'-0"SL
	(302)	ELECTRIC #4	7	ELATION OPTI TRI PAR 63w	LED WASH	LED	<input type="checkbox"/> 1(A)/305 = 305	0'-6"SL
	(301)	ELECTRIC #4	10	ELATION OPTI TRI PAR 63w	LED WASH	LED	<input type="radio"/> 1(A)/301 = 301	6'-0"SR
	(306)	ELECTRIC #5	3	ELATION OPTI TRI PAR 63w	LED WASH	LED	<input type="checkbox"/> 1(A)/321 = 321	6'-0"SL
	(305)	ELECTRIC #5	6	ELATION OPTI TRI PAR 63w	LED WASH	LED	<input type="radio"/> 1(A)/317 = 317	0'-6"SL
	(304)	ELECTRIC #5	9	ELATION OPTI TRI PAR 63w	LED WASH	LED	<input type="checkbox"/> 1(A)/313 = 313	6'-0"SR
21	(21)	SR UNDER CATWALK	1.1	DIM RELAY 1kW	ML POWER		1(A)/21 = 21	20'-0"SR
22	(203)	SR UNDER CATWALK	1.0	VL1000TS 1kW	MOVING LIGHT		1(A)/201 = 201	20'-0"SR
24	(24)	ELECTRIC #5 - SR EXT	1	SOURCE 4-36° 575w	SPECIAL	N/C	<input type="radio"/> 1(A)/24 = 24	14'-6"SR
41	(41)	ELECTRIC #4 - SL EXT	1	SOURCE 4-36° 575w	SPECIAL	N/C	<input type="checkbox"/> 1(A)/41 = 41	14'-6"SL
44	(44)	ELECTRIC #4	1	SOURCE 4-36° 575w	SPECIAL	N/C	<input type="radio"/> 1(A)/44 = 44	9'-0"SL
47	(47)	ELECTRIC #4	2	SOURCE 4 PARNEL 575w	WASH	N/C	<input type="checkbox"/> 1(A)/47 = 47	8'-3"SL
48	(48)	ELECTRIC #4	6	SOURCE 4 PARNEL 575w	WASH	N/C	<input type="radio"/> 1(A)/48 = 48	1'-9"SL
49	(49)	ELECTRIC #4	8	SOURCE 4 PARNEL 575w	WASH	N/C	<input type="checkbox"/> 1(A)/49 = 49	1'-9"SR
50	(50)	ELECTRIC #4	12	SOURCE 4 PARNEL 575w	WASH	N/C	<input type="radio"/> 1(A)/50 = 50	8'-3"SR
53	(53)	ELECTRIC #4	13	SOURCE 4-36° 575w	SPECIAL	N/C	<input type="checkbox"/> 1(A)/53 = 53	9'-0"SR
56	(56)	ELECTRIC #4 - SR EXT	1	SOURCE 4-36° 575w	SPECIAL	N/C	<input type="radio"/> 1(A)/56 = 56	14'-6"SR



DIMMER HOOKUP

Page 2 of 5

Level 3: Rack 1: DIMMERS 1-96 Capacity: 2.4kW @ 120v, in racks of 96

Dim	Chn	Position	U#	Type & Watts	Purpose	Clr & Tmpl	Address	Dist
57	(57)	ELECTRIC #3	1	SOURCE 4-50° 575w	SPECIAL	N/C	<input type="checkbox"/> 1(A)/57 = 57	9'-0"SL
58	(58)	ELECTRIC #3	2	SOURCE 4-36° 575w	SPECIAL	N/C	<input type="radio"/> 1(A)/58 = 58	7'-6"SL
63	(63)	ELECTRIC #3	3	SOURCE 4 PARNEL 575w	WASH	N/C	<input type="checkbox"/> 1(A)/63 = 63	6'-6"SL
64	(64)	ELECTRIC #3	5	SOURCE 4 PARNEL 575w	WASH	N/C	<input type="radio"/> 1(A)/64 = 64	1'-9"SL
65	(65)	ELECTRIC #3	8	SOURCE 4 PARNEL 575w	WASH	N/C	<input type="checkbox"/> 1(A)/65 = 65	1'-9"SR
66	(66)	ELECTRIC #3	10	SOURCE 4 PARNEL 575w	WASH	N/C	<input type="radio"/> 1(A)/66 = 66	6'-6"SR
69	(69)	ELECTRIC #3	12	SOURCE 4-50° 575w	SPECIAL	N/C	<input type="checkbox"/> 1(A)/69 = 69	9'-0"SR
70	(70)	ELECTRIC #3	11	SOURCE 4-36° 575w	SPECIAL	N/C	<input type="radio"/> 1(A)/70 = 70	7'-6"SR
75	(75)	ELECTRIC #2	1	SOURCE 4-26° 575w	FRONT	N/C	<input type="checkbox"/> 1(A)/75 = 75	9'-0"SL
76	(76)	ELECTRIC #2	2	SOURCE 4-26° 575w	FRONT	N/C	<input type="radio"/> 1(A)/76 = 76	7'-0"SL
77	(77)	ELECTRIC #2	4	SOURCE 4-26° 575w	FRONT	N/C	<input type="checkbox"/> 1(A)/77 = 77	5'-0"SL
78	(78)	ELECTRIC #2	5	SOURCE 4-26° 575w	FRONT	N/C	<input type="radio"/> 1(A)/78 = 78	3'-0"SL
79	(79)	ELECTRIC #2	7	SOURCE 4-26° 575w	FRONT	N/C	<input type="checkbox"/> 1(A)/79 = 79	1'-0"SL
80	(80)	ELECTRIC #2	8	SOURCE 4-26° 575w	FRONT	N/C	<input type="radio"/> 1(A)/80 = 80	1'-0"SR
81	(81)	ELECTRIC #2	10	SOURCE 4-26° 575w	FRONT	N/C	<input type="checkbox"/> 1(A)/81 = 81	3'-0"SR
82	(82)	ELECTRIC #2	11	SOURCE 4-26° 575w	FRONT	N/C	<input type="radio"/> 1(A)/82 = 82	5'-0"SR
83	(83)	ELECTRIC #2	13	SOURCE 4-26° 575w	FRONT	N/C	<input type="checkbox"/> 1(A)/83 = 83	7'-0"SR
84	(84)	ELECTRIC #2	14	SOURCE 4-26° 575w	FRONT	N/C	<input type="radio"/> 1(A)/84 = 84	9'-0"SR
90	(90)	ELECTRIC #1	2.1	DIM RELAY 1kW	ML POWER		1(A)/90 = 90	3'-9"SL
92	(202)	ELECTRIC #1	2.0	VL1000TS 1kW	MOVING LIGHT		2(B)/228 = 740	3'-9"SL
93	(201)	ELECTRIC #1	5.0	VL1000TS 1kW	MOVING LIGHT		2(B)/201 = 713	3'-9"SR
94	(94)	ELECTRIC #1	5.1	DIM RELAY 1kW	ML POWER		1(A)/94 = 94	3'-9"SR



DIMMER HOOKUP

Page 3 of 5

Level 3: Rack 2: DIMMERS 97-118 Capacity: 2.4kW @ 120v, in racks of 22

Dim	Chn	Position	U#	Type & Watts	Purpose	Clr & Tmpl	Address	Dist
98	(98)	ELECTRIC #5	1	SOURCE 4 FRESNEL 7" 575w	HOUSELIGHTS	N/C	<input type="checkbox"/> 1(A)/98 = 98	8'-0"SL
	(98)	ELECTRIC #5	4	SOURCE 4 FRESNEL 7" 575w	HOUSELIGHTS	N/C	<input type="radio"/> 1(A)/98 = 98	3'-0"SL
	(98)	ELECTRIC #5	8	SOURCE 4 FRESNEL 7" 575w	HOUSELIGHTS	N/C	<input type="checkbox"/> 1(A)/98 = 98	3'-0"SR
	(98)	ELECTRIC #5	11	SOURCE 4 FRESNEL 7" 575w	HOUSELIGHTS	N/C	<input type="radio"/> 1(A)/98 = 98	8'-0"SR
99	(99)	ELECTRIC #5	2	SOURCE 4 FRESNEL 7" 575w	HOUSELIGHTS	N/C	<input type="checkbox"/> 1(A)/99 = 99	7'-6"SL
	(99)	ELECTRIC #5	5	SOURCE 4 FRESNEL 7" 575w	HOUSELIGHTS	N/C	<input type="radio"/> 1(A)/99 = 99	2'-6"SL
	(99)	ELECTRIC #5	7	SOURCE 4 FRESNEL 7" 575w	HOUSELIGHTS	N/C	<input type="checkbox"/> 1(A)/99 = 99	2'-6"SR
	(99)	ELECTRIC #5	10	SOURCE 4 FRESNEL 7" 575w	HOUSELIGHTS	N/C	<input type="radio"/> 1(A)/99 = 99	7'-6"SR
101	(101)	ELECTRIC #4	3	SOURCE 4 FRESNEL 7" 575w	HOUSELIGHTS	N/C	<input type="checkbox"/> 1(A)/101 = 101	7'-6"SL
	(101)	ELECTRIC #4	5	SOURCE 4 FRESNEL 7" 575w	HOUSELIGHTS	N/C	<input type="radio"/> 1(A)/101 = 101	2'-6"SL
	(101)	ELECTRIC #4	9	SOURCE 4 FRESNEL 7" 575w	HOUSELIGHTS	N/C	<input type="checkbox"/> 1(A)/101 = 101	2'-6"SR
	(101)	ELECTRIC #4	11	SOURCE 4 FRESNEL 7" 575w	HOUSELIGHTS	N/C	<input type="radio"/> 1(A)/101 = 101	7'-6"SR
102	(102)	ELECTRIC #2	3	SOURCE 4 FRESNEL 7" 575w	HOUSELIGHTS	N/C	<input type="checkbox"/> 1(A)/102 = 102	5'-6"SL
	(102)	ELECTRIC #2	6	SOURCE 4 FRESNEL 7" 575w	HOUSELIGHTS	N/C	<input type="radio"/> 1(A)/102 = 102	2'-0"SL
	(102)	ELECTRIC #2	9	SOURCE 4 FRESNEL 7" 575w	HOUSELIGHTS	N/C	<input type="checkbox"/> 1(A)/102 = 102	2'-0"SR
	(102)	ELECTRIC #2	12	SOURCE 4 FRESNEL 7" 575w	HOUSELIGHTS	N/C	<input type="radio"/> 1(A)/102 = 102	5'-6"SR
103	(103)	ELECTRIC #1	1	SOURCE 4 FRESNEL 7" 575w	HOUSELIGHTS		1(A)/103 = 103	5'-6"SL
	(103)	ELECTRIC #1	3	SOURCE 4 FRESNEL 7" 575w	HOUSELIGHTS		1(A)/103 = 103	2'-0"SL
	(103)	ELECTRIC #1	4	SOURCE 4 FRESNEL 7" 575w	HOUSELIGHTS		1(A)/103 = 103	2'-0"SR
104	(104)	ELECTRIC #3	4	SOURCE 4 FRESNEL 7" 575w	HOUSELIGHTS	N/C	<input type="radio"/> 1(A)/104 = 104	5'-9"SL
	(104)	ELECTRIC #3	6	SOURCE 4 FRESNEL 7" 575w	HOUSELIGHTS	N/C	<input type="checkbox"/> 1(A)/104 = 104	1'-0"SL
	(104)	ELECTRIC #3	7	SOURCE 4 FRESNEL 7" 575w	HOUSELIGHTS	N/C	<input type="radio"/> 1(A)/104 = 104	1'-0"SR
	(104)	ELECTRIC #3	9	SOURCE 4 FRESNEL 7" 575w	HOUSELIGHTS	N/C	<input type="checkbox"/> 1(A)/104 = 104	5'-9"SR
105	(105)	LEVEL 3 PERIMETER	1	PAR 32 90w	HOUSELIGHTS	N/C	<input type="radio"/> 1(A)/105 = 105	
106	(106)	LEVEL 3 PERIMETER	2	PAR 32 90w	BLUE RUNNING	R80	<input checked="" type="radio"/> 1(A)/106 = 106	
107	(107)	LEVEL 3 PERIMETER	3	PAR 32 90w	BLUE RUNNING - NORTH	R80	<input checked="" type="radio"/> 1(A)/107 = 107	
108	(108)	LEVEL 3 PERIMETER	5	PAR 32 90w	HOUSELIGHTS - EAST	N/C	<input type="checkbox"/> 1(A)/108 = 108	
109	(109)	LEVEL 3 PERIMETER	4	PAR 32 90w	HOUSELIGHTS - WEST	N/C	<input type="radio"/> 1(A)/109 = 109	
110	(110)	LEVEL 3 PERIMETER	6	PAR 32 90w	HOUSELIGHTS - NORTH	N/C	<input type="checkbox"/> 1(A)/110 = 110	
111	(111)	LEVEL 2 PERIMETER	1	PAR 32 90w	HOUSELIGHTS	N/C	<input type="radio"/> 1(A)/111 = 111	
112	(112)	LEVEL 2 PERIMETER	3	PAR 32 90w	BLUE RUNNING - NORTH	R80	<input checked="" type="radio"/> 1(A)/112 = 112	
113	(113)	LEVEL 2 PERIMETER	5	PAR 32 90w	HOUSELIGHTS - NORTH	N/C	<input type="radio"/> 1(A)/113 = 113	



DIMMER HOOKUP

Page 4 of 5

Level 3: Rack 2: DIMMERS 97-118 Capacity: 2.4kW @ 120v, in racks of 22

Dim	Chn	Position	U#	Type & Watts	Purpose	Clr & Tmpl	Address	Dist
115	(115)	LEVEL 2 PERIMETER	4	PAR 32 90w	HOUSELIGHTS - EAST/ WEST	N/C	<input type="checkbox"/> 1(A)/115 = 115	
116	(116)	LEVEL 2 PERIMETER	2	PAR 32 90w	BLUE RUNNING	R80	<input checked="" type="checkbox"/> 1(A)/116 = 116	



DIMMER HOOKUP

Page 5 of 5

Items WITHOUT Dimmer

Dim	Chn	Position	U#	Type & Watts	Purpose	Clr & Tmpl	Address	Dist
		ELECTRIC #1	6	SOURCE 4 FRESNEL 7" 575w	HOUSELIGHTS			5'-6"SR
		DIMMER ROOM	1	PATHWAY VIA 12 SWITCH	CONTROL			
		CATWALK	1	RESPONSE DMX REPEATER	CONTROL			