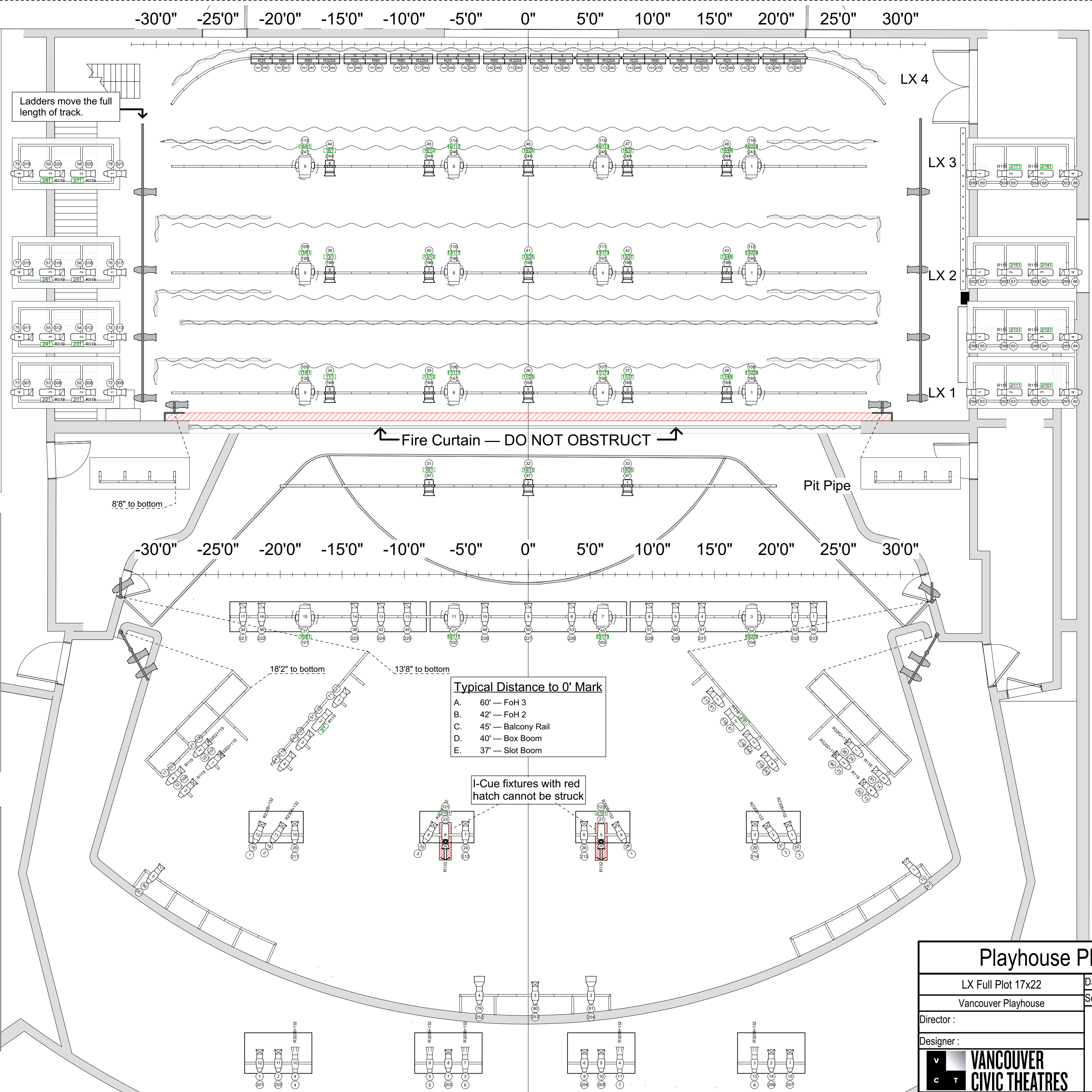


- Black Backdrop LX 4
- Cyclorama Border
- Black Scrim
- Legs
- Border
- LX 3
- Legs
- Border
- Midstage Traveler
- LX 2
- Legs
- Border
- Portable Screen
- Black Traveler
- Projector Screen
- Legs
- Border
- LX 1
- Pit LX

| Accessory | | |
|-----------------------|----------|---------|
| I-Cue | 3.5 lbs | 2 / 6 |
| Light | | |
| ETC Source4 10deg | 15 lbs | 2 / 3 |
| ETC Source4 14deg | 19.3 lbs | 5 / 5 |
| ETC Source4 19deg | 14 lbs | 22 / 29 |
| ETC Source4 26deg | 14 lbs | 31 / 55 |
| ETC Source4 36deg | 14 lbs | 8 / 51 |
| ETC Source4 50deg | 14 lbs | 2 / 22 |
| ETC Source4 LED 19deg | 14 lbs | 2 / 0 |
| ETC Source4 LED 26deg | 14 lbs | 8 / 6 |
| ETC Source4 LED 36deg | 14 lbs | 10 / 14 |
| ETC Desire Fresnel | 23.7Lbs | 18 / 18 |
| Strand 6" Fresnelite | 10.5 lbs | 0 / 40 |
| Strand Iris 2 Horiz | 34 lbs | 0 / 12 |
| Moving Light | | |
| Robe T2 | 81.4 | 16 / 16 |

- General Notes**
- A. House plot is to be restored at the end of venue rental.
 - B. Front, top and LED side focus is guaranteed, all else must be focused per the show's specifications.
 - C. Data distribution is network only, with sACN preferred but Art-Net acceptable.
 - D. Typical house trim is 22'
 - E. Arbor capacity on all but LX 1 is 700lb, with LX 2 & 3 weighing in at 500lb in house configuration

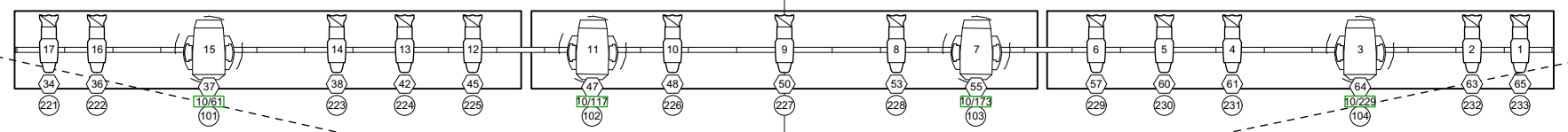


Typical Distance to 0' Mark

| | |
|----|--------------------|
| A. | 60' — FoH 3 |
| B. | 42' — FoH 2 |
| C. | 45' — Balcony Rail |
| D. | 40' — Box Boom |
| E. | 37' — Slot Boom |

| | |
|-----------------------|----------------------------|
| Playhouse Plot | |
| LX Full Plot 17x22 | Date : Jan 1st, 2024 |
| Vancouver Playhouse | Scale : 3/16th |
| Director : | 3 OF 6 |
| Designer : | |
| | |

-30'0" -25'0" -20'0" -15'0" -10'0" -5'0" 0" 5'0" 10'0" 15'0" 20'0" 25'0" 30'0"



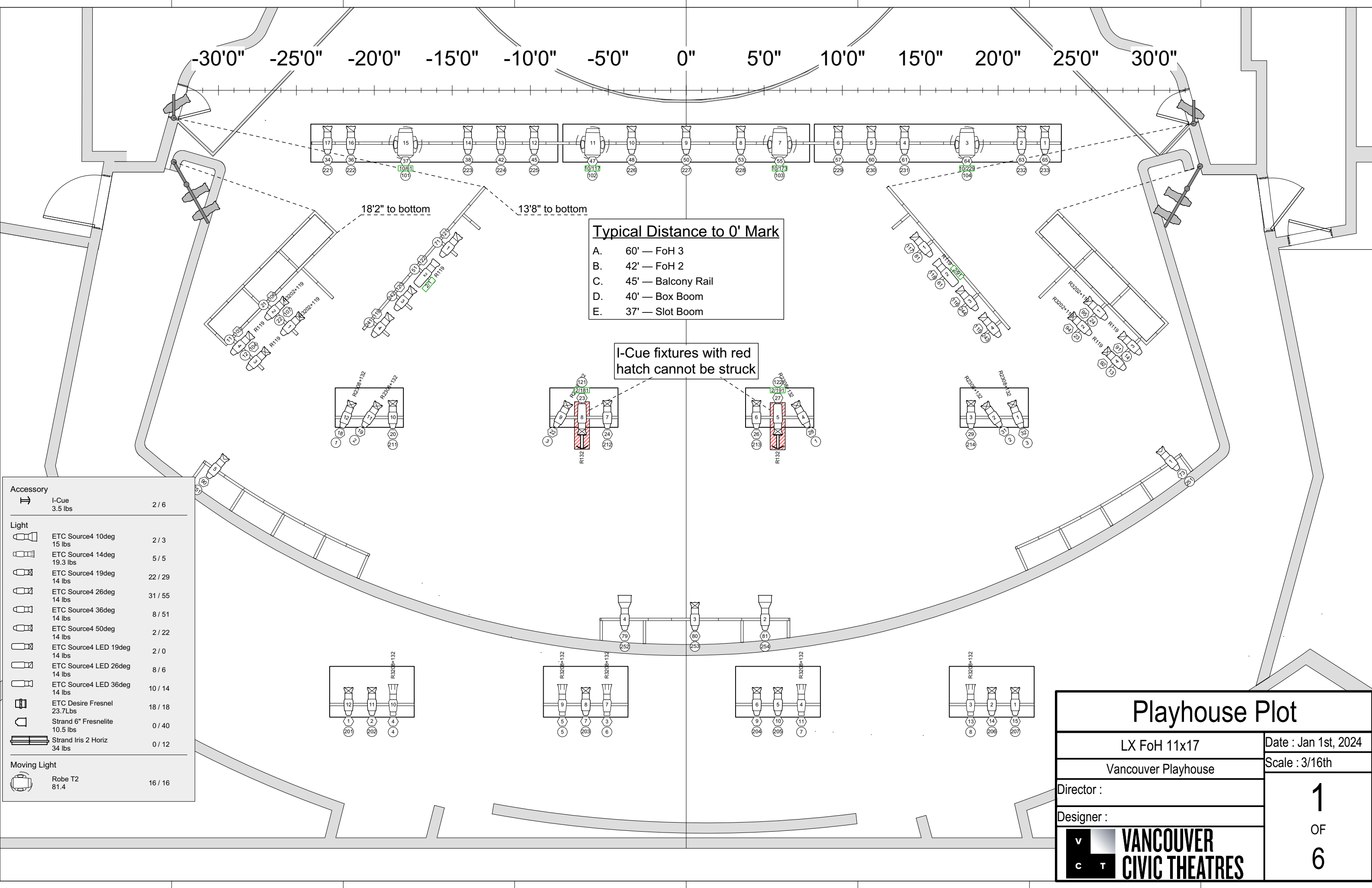
18'2" to bottom
13'8" to bottom

Typical Distance to 0' Mark

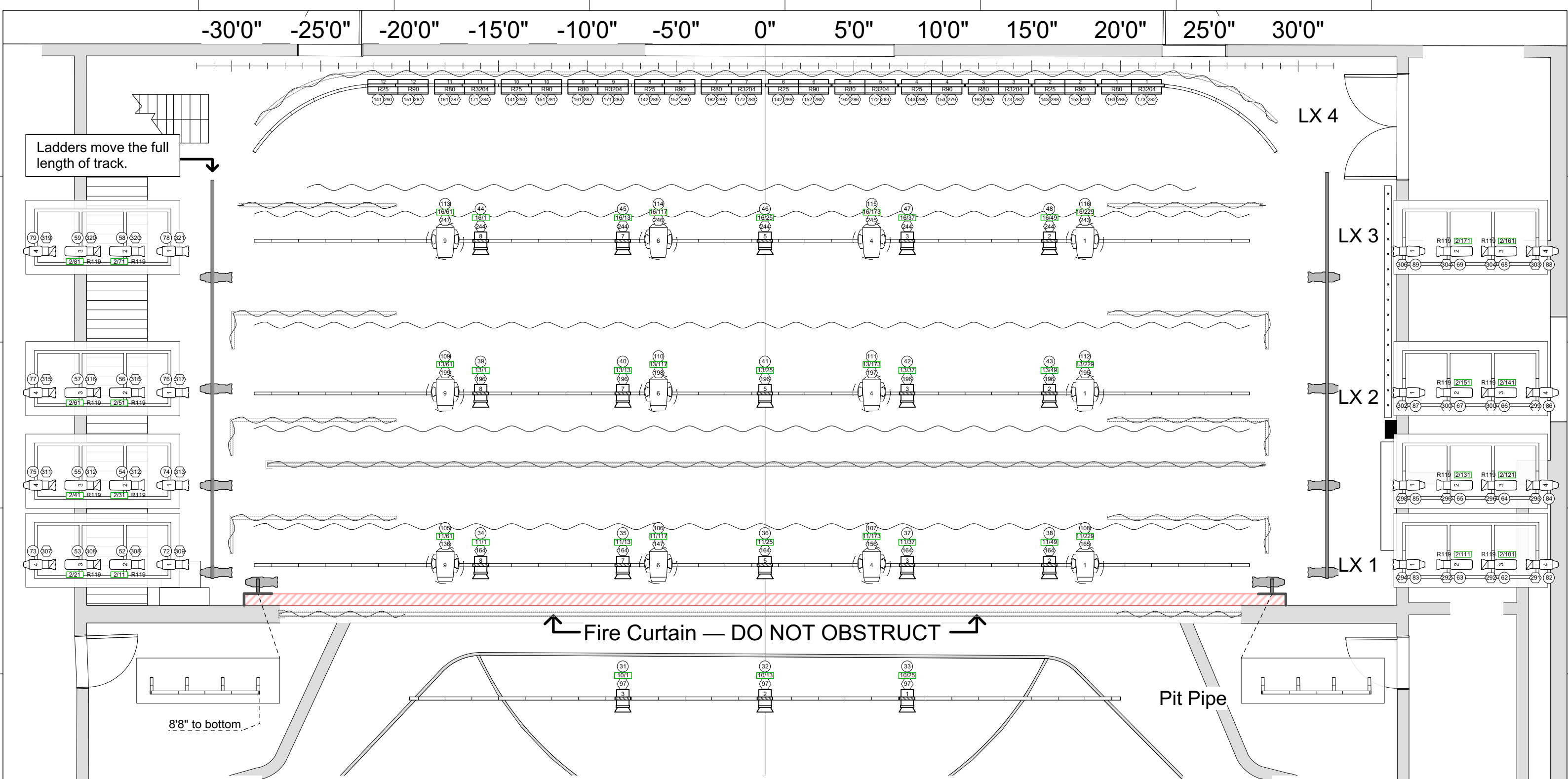
- A. 60' — FoH 3
- B. 42' — FoH 2
- C. 45' — Balcony Rail
- D. 40' — Box Boom
- E. 37' — Slot Boom

I-Cue fixtures with red hatch cannot be struck

| Accessory | | |
|--------------|----------------------------------|---------|
| | I-Cue 3.5 lbs | 2 / 6 |
| Light | | |
| | ETC Source4 10deg 15 lbs | 2 / 3 |
| | ETC Source4 14deg 19.3 lbs | 5 / 5 |
| | ETC Source4 19deg 14 lbs | 22 / 29 |
| | ETC Source4 26deg 14 lbs | 31 / 55 |
| | ETC Source4 36deg 14 lbs | 8 / 51 |
| | ETC Source4 50deg 14 lbs | 2 / 22 |
| | ETC Source4 LED 19deg 14 lbs | 2 / 0 |
| | ETC Source4 LED 26deg 14 lbs | 8 / 6 |
| | ETC Source4 LED 36deg 14 lbs | 10 / 14 |
| | ETC Desire Fresnel 23.7Lbs | 18 / 18 |
| | Strand 6" Fresnelite 10.5 lbs | 0 / 40 |
| | Strand Iris 2 Horiz 34 lbs | 0 / 12 |
| Moving Light | | |
| | Robe T2 81.4 | 16 / 16 |



| | |
|-------------------------|----------------------------|
| <h1>Playhouse Plot</h1> | |
| LX FoH 11x17 | Date : Jan 1st, 2024 |
| Vancouver Playhouse | Scale : 3/16th |
| Director : | 1 OF 6 |
| Designer : | |
| | |



| | | |
|--------------|----------------------------------|---------|
| Accessory | I-Cue 3.5 lbs | 2 / 6 |
| Light | ETC Source4 10deg 15 lbs | 2 / 3 |
| | ETC Source4 14deg 19.3 lbs | 5 / 5 |
| | ETC Source4 19deg 14 lbs | 22 / 29 |
| | ETC Source4 26deg 14 lbs | 31 / 55 |
| | ETC Source4 36deg 14 lbs | 8 / 51 |
| | ETC Source4 50deg 14 lbs | 2 / 22 |
| | ETC Source4 LED 19deg 14 lbs | 2 / 0 |
| | ETC Source4 LED 26deg 14 lbs | 8 / 6 |
| | ETC Source4 LED 36deg 14 lbs | 10 / 14 |
| | ETC Desire Fresnel 23.7 lbs | 18 / 18 |
| | Strand 6" Fresnelite 10.5 lbs | 0 / 40 |
| | Strand Ins 2 Horiz 34 lbs | 0 / 12 |
| Moving Light | Robe T2 81.4 | 16 / 16 |

General Notes

- House plot is to be restored at the end of venue rental.
- Front, top and LED side focus is guaranteed, all else must be focused per the show's specifications.
- Data distribution is network only, with sACN preferred but Art-Net acceptable.
- Typical house trim is 22' Arbor capacity on all but LX 1 is 700lb, with LX 2 & 3 weighing in at 500lb in house configuration

Playhouse Plot

LX Onstage 11x17
Vancouver Playhouse

Director :
Designer :

Date : Jan 1st, 2024
Scale : 3/16th

2
OF
6